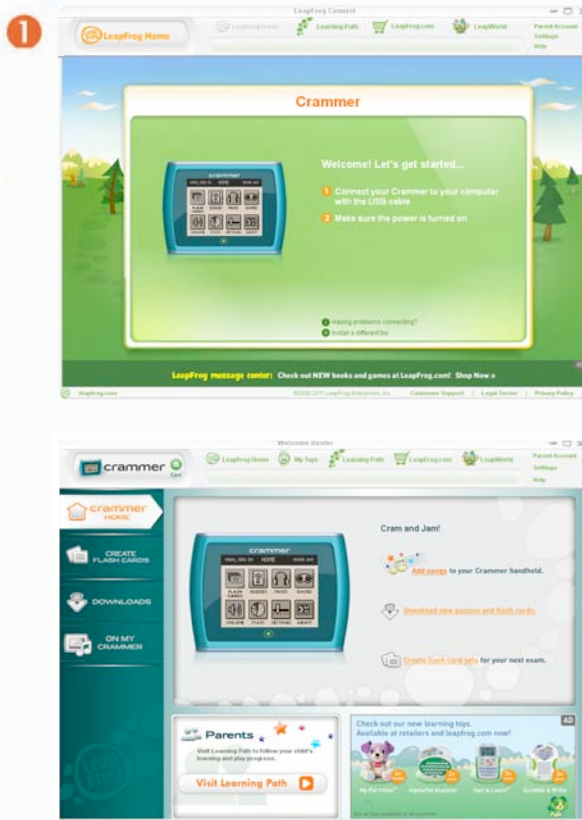




LeapFrog Connect Quick Start Guide: Crammer™

Welcome to the LeapFrog Connect Application, a comprehensive system for managing all of your LeapFrog Connected toys! This Quick Start Guide provides basic instructions to get you started with LeapFrog Connect. Visit the LeapFrog Customer Support website for user guides, video tutorials and other support materials (<http://www.leapfrog.com/support>). Visit the LeapFrog Connect online Help to guide you through the application features (<http://lfccontent.leapfrog.com/help/index.html>).



Setting up the Crammer handheld

- Insert three AAA batteries, and then turn on the Crammer handheld (the Home screen will display).

Installing the LeapFrog Connect Application

- Connect the Crammer handheld to your computer using the included USB cable and turn it on.
- An Internet connection is required for the following step:
 - Windows users: Follow the instructions on the computer to download the installer and install the LeapFrog Connect Application.
 - Mac users: Open the Crammer Installer on your computer and double-click the installation file. Follow the instructions on the computer to complete the installation of the LeapFrog Connect Application.
- If you have problems with the step above, you can download the installer from the LeapFrog Customer Support website (www.leapfrog.com/support). Follow the prompts to download and install the LeapFrog Connect Application for Crammer.

Setting up a LeapFrog Parent Account

- Open the LeapFrog Connect Application by double-clicking the LeapFrog Connect icon on your desktop (if it is not already open).
- 1 Follow the on-screen instructions to connect your toy, set up a LeapFrog parent account, and enter information to create a personal LeapFrog® Learning Path for your child. For more information, see the [LeapFrog Connect Quick Start Guide](#).

Flash Cards, Quizzes, Music and More

- Parents: Connect the Crammer handheld to your computer often to see your child's progress on the LeapFrog Learning Path.
- Kids: Use the LeapFrog Connect Application to:
 - Create your own digital flash cards.
 - Download thousands of free math, social studies, science and language arts quiz questions.
 - Import music to listen to on the Crammer handheld.

The Crammer Study & Sound System may not be available in all countries. Screenshots are for illustrative purposes only. Actual screenshots may vary.