

CT Sportswear.com



# BOMARK®

2012



## Delivering the Brands You Trust

BOMARK DISTRIBUTES TEAM ATHLETIC APPAREL AND GEAR FROM THE BEST BRANDS.



# CT Sportswear.com AT BOMARK, WE'RE YOUR **One★Stop★Shop!**

WE'RE PROUD TO OFFER ONE OF THE MOST COMPLETE LINES IN THE INDUSTRY WITH  
ONLY THE BEST BRANDS OF ATHLETIC APPAREL AND EQUIPMENT!

AUGUSTA ★ BOMARK® ★ HIGH FIVE® ★ JERZEES® ★ MAJESTIC® ★ McDAVID® ★ MIZUNO® ★ OC SPORTS® ★ RAWLINGS® ★ WILSON®



Our selection of brands makes shopping for team sports a breeze. From baseball and basketball to football and cheer, we have you covered in the brands you know and trust!

**EXPERIENCE THE BOMARK DIFFERENCE AND  
FIND EVERYTHING YOU NEED IN ONE STOP.**

# CT Sportswear.com Step Up Your Game

## WITH LICENSED PRODUCTS!

BASEBALL...YOU NEVER OUTGROW IT! MLB, MiLB BASEBALL AND COLLEGE PRODUCTS NOW AVAILABLE FOR ALL AGES OF YOUTH SPORTS.



Majestic® and OC Sports® top quality Major/Minor League Baseball Replicas and our new offering of Holloway® Collegiate Replicas give you a winning line-up of baseball/softball team apparel. Just add numbers and PLAY BALL!



★ COLLEGIATE APPAREL



★ MINOR LEAGUE APPAREL



★ MAJOR LEAGUE APPAREL



## 2012 New Products



Consistently bringing you NEW performance enhancing styles year after year. Need a SPECIAL ORDER stock item not shown in our catalog? We can provide that too...from any of our industry leading brands! Total customer service.



**Holloway®**  
Ladies Curve Jersey  
228353 **pg 16**



**Mizuno®**  
Vintage Wheel Bag  
Z60151 **pg 80**



**Mizuno®**  
Long Sleeve Batting Jersey  
Z50282 **pg 67**



**Rawlings®**  
10" Leg Guard  
R6C **pg 76**



**Rawlings®**  
Covert Duffle Bag  
RCOVER **pg 79**



**Dyenomite®**  
One-Color Tie Dye  
D200CY **pg 58**



**Augusta**  
Ladies Wicking/Odor Resistant Jersey  
1015 **pg 61**



**Rawlings®**  
Quick-Tee Pro  
RQTPRO **pg 79**



**Augusta**  
RBI Jersey  
1525 **pg 20**



**Holloway®**  
Rookie Jersey  
228449 **pg 16**



**Rawlings®**  
Bomber Bat Pack  
RBOMB **pg 79**



**Augusta**  
Triple Play Baseball/Softball Pant  
1465 **pg 26**



**OC Sports®**  
College Replica Visors  
COL110 **pg 18**



**OC Sports®**  
Nike® DRI-FIT®  
Performance Jersey  
TSS100 **pg 12**



**Rawlings®**  
12" Chest Protector  
R6P1 **pg 76**



**Dyenomite®**  
Multi-Color Tie Dye  
D200MA **pg 58**



**Wilson®**  
Classic Baseball/Softball Pant  
W43300 **pg 26**



**Augusta**  
Wicking Textured Color Block  
Sport Shirt  
5086 **pg 60**



**Holloway®**  
Adult Ball Park Jersey  
228463 **pg 16**



**Rawlings®**  
Blemished Baseball  
R100HX **pg 73**



**Augusta**  
Ladies MVP Jersey  
1300 **pg 52**



**Mizuno®**  
G3 Batpack  
Z60161 **pg 80**



**Augusta**  
Ladies Poly/Spandex 2.5" Short  
1210 **pg 52**



**Augusta**  
Pep Rally Jersey  
253 **pg 57**



**Rawlings®**  
14" Chest Protector  
R11P **pg 76**



**Mizuno®**  
Vintage G4 Bat Bag  
Z60152 **pg 80**



**Augusta**  
Dominator Football Jersey  
9521 **pg 42**



**Mizuno®**  
Short Sleeve Batting Jersey  
Z50284 **pg 67**



**Augusta**  
Augusta Open Bottom Pant  
868 **pg 27**



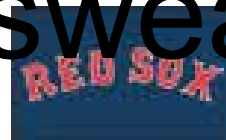
ARIZONA DIAMONDBACKS



ATLANTA BRAVES



BALTIMORE ORIOLES



BOSTON RED SOX



CHICAGO CUBS



CHICAGO WHITE SOX



CINCINNATI REDS



CLEVELAND INDIANS



COLORADO ROCKIES



DETROIT TIGERS



FLORIDA MARLINS



HOUSTON ASTROS



KANSAS CITY ROYALS



LOS ANGELES ANGELS



LOS ANGELES DODGERS



MILWAUKEE BREWERS



MINNESOTA TWINS



NEW YORK METS



NEW YORK YANKEES



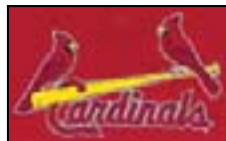
OAKLAND ATHLETICS



PHILADELPHIA PHILLIES



PITTSBURGH PIRATES



ST. LOUIS CARDINALS



SAN DIEGO PADRES



SAN FRANCISCO GIANTS



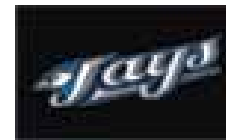
SEATTLE MARINERS



TAMPA BAY RAYS



TEXAS RANGERS



TORONTO BLUE JAYS



WASHINGTON NATIONALS

**A**



## A. Majestic® Replica T-Shirt

100% cotton crewneck jersey. Screenprinted with authentic team name or logo.

**Style M5300:** Adult S, M, L, XL, 2XL.

**Style M5301:** Youth S, M, L.

**Colors:** All 30 teams.



**B**



## B. Majestic® Replica Two-Button Jersey

50% polyester/50% cotton two-button jersey. Screenprinted with authentic team name or logo.

**Style MLB180:** Adult S, M, L, XL, 2XL, 3XL.

**Style MLB181:** Youth S, M, L.

**Colors:** All 30 teams.





ARIZONA DIAMONDBACKS



ATLANTA BRAVES



BALTIMORE ORIOLES



BOSTON RED SOX



CHICAGO CUBS



CHICAGO WHITE SOX



CINCINNATI REDS



CLEVELAND INDIANS



COLORADO ROCKIES



DETROIT TIGERS



FLORIDA MARLINS



HOUSTON ASTROS



KANSAS CITY ROYALS



LOS ANGELES ANGELS



LOS ANGELES DODGERS



MILWAUKEE BREWERS



MINNESOTA TWINS



NEW YORK METS



NEW YORK YANKEES



OAKLAND ATHLETICS



PHILADELPHIA PHILLIES



PITTSBURGH PIRATES



ST. LOUIS CARDINALS



SAN DIEGO PADRES



SAN FRANCISCO GIANTS



SEATTLE MARINERS



TAMPA BAY RAYS



TEXAS RANGERS



TORONTO BLUE JAYS



WASHINGTON NATIONALS



## C. MLB Replica Caps From OC Sports®

Twill replica caps for youth leagues. Not intended for retail sales. Adjustable velcro closure. All major league teams. Mid-profile with 3-D logo.

**Style MLB250:** Adult cap fits ages 12 and up.  
Youth cap fits ages 6-12.



**A. Majestic® MLB Cool Base™  
Crew Neck Replica Jersey**

100% Cool Base™ Interlock fabric. Cool Base™ technology keeps players cool and comfortable. Official screened team name and logo.

**Style M1260:** Adult S, M, L, XL, 2XL.

**Style M1261:** Youth S, M, L.

**Teams:** All 30 MLB Teams.



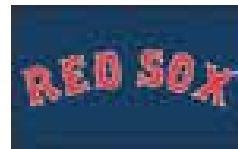
ARIZONA DIAMONDBACKS



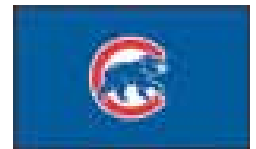
ATLANTA BRAVES



BALTIMORE ORIOLES



BOSTON RED SOX



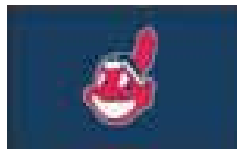
CHICAGO CUBS



CHICAGO WHITE SOX



CINCINNATI REDS



CLEVELAND INDIANS



COLORADO ROCKIES



DETROIT TIGERS



FLORIDA MARLINS



HOUSTON ASTROS



KANSAS CITY ROYALS



LOS ANGELES ANGELS



LOS ANGELES DODGERS



MILWAUKEE BREWERS



MINNESOTA TWINS



NEW YORK METS



NEW YORK YANKEES



OAKLAND ATHLETICS



PHILADELPHIA PHILLIES



PITTSBURGH PIRATES



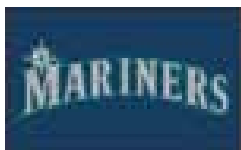
ST. LOUIS CARDINALS



SAN DIEGO PADRES



SAN FRANCISCO GIANTS



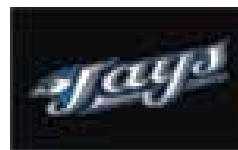
SEATTLE MARINERS



TAMPA BAY RAYS



TEXAS RANGERS



TORONTO BLUE JAYS



WASHINGTON NATIONALS



**B**



**B. OC Sports® Major League Replica Mesh Caps**

6 panel jersey mesh. Structured, pro style mid profile with 3D replica logo. Pre-curved visor. Stretchable fit. Not intended for retail sales.

**Style MLB375:** S/M (6¾" - 7⅞"), M/L (7" - 7⅞"), L/XL (7¼" - 7⅞").

**Colors:** All 30 teams.

**C**



**C. MLB Replica Visor From OC Sports®**

Cotton twill replica visors for league wear. 3D replica logo on 2¼" crown. Pre-curved visor and velcro closure with team name. Not intended for retail sales.

**Style MLB153:** Adult cap (6⅞" - 7½") fits ages 12 and up.

**Colors:** All 30 teams.

**D**

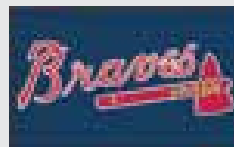


**D. Majestic® MLB Replica Women's Two-Button Jersey**

50% polyester/50% cotton jersey knit. Official screened name and logo.

**Style MW0083:** Women's XXS, XS, S, M, L, XL, 2XL.

**Teams:** See right.



ATLANTA BRAVES



BOSTON RED SOX



CHICAGO CUBS



CINCINNATI REDS



HOUSTON ASTROS



LOS ANGELES ANGELS



LOS ANGELES DODGERS



NEW YORK YANKEES



OAKLAND ATHLETICS



PHILADELPHIA PHILLIES



ST. LOUIS CARDINALS



TEXAS RANGERS



## A. Nike® DRI-FIT® Performance Jersey by OC Sports®

100% polyester fabric. 1 x 1 rib neck. MLB® batter logo transfer at top back neck. Nike® Swoosh logo on center front of neck.

**Style TSS100:** Adult S, M, L, XL, 2XL.

**Style TSS200:** Youth S, M, L.

**Colors:** Black, Navy, Red, Royal, White.



## C. Majestic® Cooperstown Cool Base™ Two-Button Replica Jersey

100% Cool Base™ Interlock fabric. Cool Base™ technology keeps players cool and comfortable. Official screen team name and logo.

**Style M186A:** Adult S, M, L, XL, 2XL, 3XL.

**Style M186Y:** Youth S, M, L.

**Teams:** See right.



★ SEE ADDITIONAL PANTS ON PAGE 25.



B



## B. Majestic® Pro-Style Baseball Pant

100% medium weight double knit polyester. Pro-style tunnel belt loops. Brass zipper fly with double-snap closure. One welted set-in back pocket with MLB logo and double knees.

**Style M857A:** Adult S, M, L, XL, 2XL.

**Style M857Y:** Youth XS, S, M, L, XL.

**Colors:** Silver Grey, White.

D



## D. Majestic® Youth Pull-up Baseball Pant

100% medium weight polyester double knit. Gathered elastic waistband with drawcord. Set-in back pocket and double knees.

**Style M854Y:** Youth S, M, L, XL.

**Colors:** Silver Grey, White.

*\* Adult sizes are not available.*





BALTIMORE ORIOLES



BOSTON RED SOX



CALIFORNIA ANGELS



CHICAGO CUBS



CHICAGO WHITE SOX



CLEVELAND INDIANS



HOUSTON ASTROS



MILWAUKEE BREWERS



NEW YORK METS



NEW YORK YANKEES



PHILADELPHIA PHILLIES



PITTSBURGH PIRATES



SAN DIEGO PADRES



SAN FRANCISCO GIANTS



ST. LOUIS CARDINALS



BALTIMORE ORIOLES

BOSTON RED SOX

CALIFORNIA ANGELS

CHICAGO CUBS

CHICAGO WHITE SOX

CLEVELAND INDIANS



HOUSTON ASTROS

MILWAUKEE BREWERS

NEW YORK METS

NEW YORK YANKEES

PHILADELPHIA PHILLIES

PITTSBURGH PIRATES



SAN DIEGO PADRES

SAN FRANCISCO GIANTS

ST. LOUIS CARDINALS



## E. OC Sports® Cooperstown Replica Caps

100% cotton twill. Adjustable closure. 3D logo. Not intended for retail sales.

**Style MLB295:** Adult cap (6⅞" - 7½") fits ages 12 and up.  
Youth cap (6⅞" - 7") fits ages 6-12.

**Teams:** See above.





BATAVIA MUCKDOGS



BINGHAMTON METS



BOWLING GREEN HOT RODS



BURLINGTON BEES



CAROLINA MUDCATS



CHARLESTON RIVERDOGS



CHATTANOOGA LOOKOUTS



CORPUS CHRISTI HOOKS



DURHAM BULLS



GREENSBORO GRASSHOPPERS



LAKE ELSINORE STORM



LAKEWOOD BLUECLAWS



LANSING LUGNUTS



LOUISVILLE BATS



MAHONING VALLEY SCRAPPERS



MIDLAND ROCKHOUNDS



OGDEN RAPTORS



ROCHESTER RED WINGS



ROUND ROCK EXPRESS



SACRAMENTO RIVER CATS



SALEM VOLCANOES



SAVANNAH SAND GNATS



TOLEDO MUD HENS



TRENTON THUNDER



WEST TENN DIAMOND JAXX



WISCONSIN TIMBER RATTLEERS

**A. OC Sports® Minor League Replica Caps**

100% cotton twill. Adjustable closure. 3D logo. Not intended for retail sales.

**Style MIN250:** Adult cap fits ages 12 and up.  
Youth cap fits ages 6-12.

**Teams:** See caps above.

*\* When changes to MIN logos or colors occur after publication, we will ship the latest version available.*





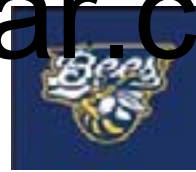
**BATAVIA MUCKDOGS**



**BINGHAMTON METS**



**BOWLING GREEN HOT RODS**



**BURLINGTON BEES**



**CAROLINA MUDCATS**



**CHARLESTON RIVERDOGS**



**CHATTANOOGA LOOKOUTS**



**CORPUS CHRISTI HOOKS**



**DURHAM BULLS**



**GREENSBORO GRASSHOPPERS**



**LAKE ELSINORE STORM**



**LAKEWOOD BLUECLAWS**



**LOUISVILLE BATS**



**MAHONING VALLEY SCRAPPERS**



**MIDLAND ROCKHOUNDS**



**OGDEN RAPTORS**



**ROCHESTER RED WINGS**



**ROUND ROCK EXPRESS**



**SACRAMENTO RIVER CATS**



**SALEM VULCANES**



**SAVANNAH SAND GNATS**



**TOLEDO MUD HENS**



**TRENTON THUNDER**



**WEST TENN DIAMOND JAXX**



**WISCONSIN TIMBER RATTLEERS**

**B**



**B. Majestic® Minor League Replica Two-Button Jersey**

50% polyester/50% cotton two-button jersey. Screenprinted with authentic Minor League team name or logo.

**Style MIN180:** Adult S, M, L, XL, 2XL.

**Style MIN181:** Youth S, M, L.

**Teams:** See above.

**C**



**C. Majestic® Minor League Replica T-Shirt**

100% cotton crewneck jersey is screenprinted with authentic Minor League name or logo.

**Style M1130:** Adult S, M, L, XL, 2XL.

**Style M1131:** Youth S, M, L.

**Teams:** See above.



C



## A. Holloway® Ball Park Jersey

Dry-Excel™ fresh micro-interlock polyester. Semi-fitted performance product with wicking and odor resistant properties. Two-button placket and matching, self-fabric collar. Decorated with college replica logos for youth team sports. Not intended for retail sales.

**Style 228463:** Adult S, M, L, XL, 2XL, 3XL.

**Style 228263:** Youth S, M, L.

**Teams:** See right.

## B. Holloway® Rookie Jersey

Dry-Excel™ fresh micro-interlock polyester. Semi-fitted performance product with wicking and odor resistant properties. Self-fabric collar. Decorated with college replica logos for youth team sports. Not intended for retail sales.

**Style 228449:** Adult S, M, L, XL, 2XL, 3XL.

**Style 228249:** Youth S, M, L.

**Teams:** See right.

## C. Holloway® Ladies Curve Jersey

Dry-Excel™ fresh micro-interlock polyester. Semi-fitted performance product with wicking and odor resistant properties. Self-fabric V-neck collar. Decorated with college replica logos for youth team sports. Not intended for retail sales.

**Style 228353:** Ladies S, M, L, XL, 2XL.

**Style 228253:** Girls S, M, L.

**Teams:** See right.

★ **COLLEGIATE REPLICAS ARE NOT INTENDED FOR RETAIL SALES**

# CT Sportswear.com



ALABAMA CRIMSON TIDE



ARIZONA WILDCATS



ARIZONA STATE SUN DEVILS



ARKANSAS RAZORBACKS



AUBURN TIGERS



CLEMSON TIGERS



COLORADO STATE RAMS



FLORIDA GATORS



FLORIDA STATE SEMINOLES



GEORGIA BULLDOGS



GA TECH YELLOW JACKETS



ILLINOIS FIGHTING ILLINI



KANSAS JAYHAWKS



KANSAS STATE WILDCATS



KENTUCKY WILDCATS



LSU TIGERS



MARYLAND TERRAPINS



MIAMI HURRICANES



MICHIGAN WOLVERINES



NEBRASKA HUSKERS



NOTRE DAME FIGHTING IRISH



OKLAHOMA SOONERS



OKLAHOMA STATE COWBOYS



PEPPERDINE WAVES



SOUTH CAROLINA GAMECOCKS



TENNESSEE VOLUNTEERS



TEXAS A & M AGGIES



TEXAS TECH RED RAIDERS



WASHINGTON HUSKIES



WISCONSIN BADGERS





ALABAMA CRIMSON TIDE



ARIZONA STATE SUN DEVILS



ARKANSAS RAZORBACKS



AUBURN TIGERS



COLORADO STATE RAMS



FLORIDA GATORS



FLORIDA STATE SEMINOLES



GEORGIA BULLDOGS



GA TECH YELLOW JACKETS



FIGHTING ILLINI



KANSAS JAYHAWKS



KENTUCKY WILDCATS



LSU TIGERS



MARYLAND TERRAPINS



MIAMI HURRICANES



MICHIGAN WOLVERINES



NEBRASKA HUSKERS



OKLAHOMA STATE COWBOYS



SOUTH CAROLINA GAMECOCKS



TENNESSEE VOLUNTEERS



TEXAS A &amp; M AGGIES



WASHINGTON HUSKIES



WISCONSIN BADGERS

**A. OC Sports® College Replica Visor**

Polyester moisture wicking fabric. 3D replica mascot logo.  
Pre-curved visor with mascot name on hook and loop closure.  
Not intended for retail sales.

**Style COL110:** Adult.

**Teams:** See above.





ALABAMA CRIMSON TIDE



ARIZONA WILDCATS



ARIZONA STATE SUN DEVILS



ARKANSAS RAZORBACKS



AUBURN TIGERS



CLEMSON TIGERS



COLORADO STATE RAMS



FLORIDA GATORS



FLORIDA STATE SEMINOLES



GEORGIA BULLDOGS



GA TECH YELLOW JACKETS



FIGHTING ILLINI



KANSAS JAYHAWKS



KANSAS STATE WILDCATS



KENTUCKY WILDCATS



LSU TIGERS



MARYLAND TERRAPINS



MIAMI HURRICANES



MICHIGAN WOLVERINES



NEBRASKA HUSKERS



NOTRE DAME FIGHTING IRISH



OKLAHOMA SOONERS



OKLAHOMA STATE COWBOYS



PEPPERDINE WAVES



SOUTH CAROLINA GAMECOCKS



TENNESSEE VOLUNTEERS



TEXAS A & M AGGIES



TEXAS TECH RED RAIDERS



WASHINGTON HUSKIES



WISCONSIN BADGERS



## B. OC Sports® College Replica Caps

6 panel, polyester/cotton twill cap. Structured, mid-profile with 3D replica mascot logo. Pre-curved visor. Grey undervisor and adjustable hook/loop closure with school name. Not intended for retail sales.

**Style COL275:** Adult cap fits ages 12 and up.  
Youth cap fits ages 6-12.

**Teams:** See above.



## A. Augusta RBI Jersey

100% polyester knit front with 92% polyester/8% spandex pinhole mesh back wicks moisture away from the body. Two-button placket. Contrast color piping and inserts.

**Style 1525:** Adult S, M, L, XL, 2XL, 3XL.

**Style 1526:** Youth S, M, L.

**Colors:** Black/Silver/White, Dark Green/Black/White, Maroon/Black/White, Navy/Red/White, Navy/Silver/White, Orange/Black/White, Purple/Black/White, Red/Black/White, Royal/Gold/White, Royal/Orange/White, Royal/Red/White, Royal/Silver/White, Vegas Gold/Black/White, White/Silver/Black.



## C. Augusta Wicking Color Block Two-Button Jersey

100% polyester wicking mesh. Heat sealed label. 1 x 1 rib-knit collar. Contrast color side inserts. Two-button placket. Double-needle hemmed raglan sleeves and bottom.

**Style 538:** Adult S, M, L, XL, 2XL, 3XL.

**Style 539:** Youth S, M, L.

**Colors:** Black/White, Dark Green/White, Gold/White, Maroon/White, Navy/White, Orange/White, Purple/White, Red/White, Royal/White, Silver Grey/Black, White/Black.

## B



## B. Augusta Power Plus Jersey

100% polyester wicking knit with 100% polyester mesh insert. Wicks moisture away from the body. Heat sealed label, self-fabric collar with two-button placket. Raglan sleeves with contrast color inserts. Double-needle hemmed sleeves and bottom.

**Style 428:** Adult S, M, L, XL, 2XL, 3XL.

**Style 429:** Youth S, M, L.

**Colors:** Black/White/Silver Grey, Columbia Blue/White/Silver Grey, Dark Green/White/Silver Grey, Gold/White/Black, Maroon/White/Silver Grey, Navy/White/Silver Grey, Orange/White/Silver Grey, Red/White/Silver Grey, Royal/White/Silver Grey, Silver Grey/White/Black, Vegas Gold/White/Black, White/Silver/Black.

## D



## D. Augusta Wicking Two-Button Baseball Jersey

100% polyester wicking mesh. 1 x 1 rib-knit trim at the neck. Contrast color piping on front of sleeves. Double-needle hemmed sleeves and fishtail bottom.

**Style 585:** Adult S, M, L, XL, 2XL, 3XL.

**Style 586:** Youth M, L.

**Colors:** Black, Dark Green, Maroon, Navy, Red, Royal with White trim, Silver Grey, White with Black trim.



## E. Augusta Wicking Two-Button Jersey

100% polyester wicking knit. Wicks moisture away from the body. Heat sealed label, self fabric collar and two button placket. Double-needle hemmed bottom and set-in sleeves.

**Style 426:** Adult S, M, L, XL, 2XL, 3XL, 4XL.

**Style 427:** Youth S, M, L.

**Colors:** Black, Dark Green, Gold, Maroon, Navy, Orange, Purple, Red, Royal, Silver Grey, Vegas Gold, White.



## G. Augusta Mesh Two-Button Baseball Jersey

70-denier polyester mesh with rib-knit trim at neck. Two-button placket. Double-needle hemmed sleeves and bottom.

**Style 442:** Adult S, M, L, XL, 2XL, 3XL.

**Style 444:** Youth S, M, L.

**Colors:** Black, Dark Green, Gold, Maroon, Navy, Purple, Red, Royal, Silver Grey, White.

## F



## F. Augusta Pro-Mesh Two-Button Jersey

100-denier polyester mesh. Rib-knit trim at neck, two-button placket. Double-needle hemmed sleeves and bottom.

**Style 477:** Adult S, M, L, XL, 2XL, 3XL.

**Style 478:** Youth M, L.

**Colors:** Black, Dark Green, Gold, Maroon, Navy, Orange, Purple, Red, Royal, Silver Grey, Vegas Gold, White.

## H



## H. Augusta Mesh Button Front Baseball Shirt

70-denier polyester mesh. Six buttons on front are spaced for easier decorating. Double-needle hemmed sleeves and fishtail bottom.

**Style 437:** Adult S, M, L, XL, 2XL, 3XL.

**Colors:** Black, Dark Green, Gold, Maroon, Navy, Red, Royal, Silver Grey, White.



## A. Augusta Heavyweight Two-Button Baseball Jersey

Heavyweight 6-ounce 50% polyester/50% cotton jersey. Full-cut styling with 1 x 1 rib knit collar. Two-button placket with matching buttons, set-in sleeves. Double-needle hemmed sleeves and bottom.

**Style 643:** Adult S, M, L, XL, 2XL, 3XL.

**Style 644:** Youth S, M, L.

**Colors:** Ash, Black, Dark Green, Gold, Heather, Maroon, Navy, Orange, Purple, Red, Royal, Teal, White.



## C. Augusta Two-Button Baseball Jersey

Solid color. Set-in sleeves. Two-button placket front. Double-needle sleeves and hemmed bottom. 50% polyester/50% cotton jersey.

**Style 580:** Adult S, M, L, XL, 2XL, 3XL\*.

**Style 581:** Youth S, M, L.

**Colors:** Ash, Black, Dark Green, Gold, Heather, Kelly, Light Blue, Maroon, Navy, Orange, Purple, Red, Royal, Silver Grey, Teal, White.

*\* Adult size 3XL available only in Ash, Navy, Red, Royal, White.*

## B



**BOMARK**



## B. Bomark® Two-Button Jersey

Placket front, set-in hemmed sleeves, solid colors. 50% polyester/50% cotton.

**Style 88615:** Adult S, M, L, XL, 2XL, 3XL.

**Style 88616:** Youth S, M, L.

**Colors:** Ash, Black, Dark Green, Gold, Heather, Kelly, Light Blue, Maroon, Navy, Orange, Purple, Red, Royal, Silver Grey, Teal, White.

*\* While Supplies Last.*

## D



## D. Augusta Short Sleeve Baseball Jersey

50% polyester/50% cotton jersey with white or heather body. Contrasting short raglan sleeves and scooped shirt tail.

**Style 423:** Adult S, M, L, XL, 2XL.

**Style 424:** Youth S, M, L.

**Colors:** Heather/Black, Heather/Navy, White/Black, White/Dark Green, White/Maroon, White/Navy, White/Red, White/Royal.





## E. Augusta Baseball Jersey

Contrasting  $\frac{3}{4}$  length raglan sleeves. 50% polyester/50% cotton jersey. Scooped shirt tail.

**Style 420:** Adult S, M, L, XL, 2XL.

**Style 421:** Youth S, M, L.

**Colors:** Heather/Black, Heather/Navy, White/Black, White/Dark Green, White/Gold, White/Kelly, White/Maroon, White/Navy, White/Purple, White/Red, White/Royal.



## G. Mizuno® Premier Stretch Sleeve Shirt

Lightweight MzD™ micro-fiber polyester with Lycra® wicks moisture away from the body. Stretch fabric for a greater range of motion. Low crew neck for greater comfort.

**Style Z50171:** Adult XXS, XS, S, M, L, XL, 2XL.

**Colors:** Black, Navy, Red, Royal.

**F**



## F. Mizuno® Premier Short Sleeve G3 Batting Jersey

100% polyester shell with 60% cotton/40% polyester yoke. Wind resistant. Mizuno Runbird logo on back and sleeve. 7" zipper and half mesh back.

**Style Z50284:** Adult S, M, L, XL, 2XL, 3XL.

**Style Z50285:** Youth M, L, XL.

**Colors:** Black, Navy, Red, Royal.

**H**



## H. Mizuno® Prestige Long Sleeve G3 Batting Jersey

100% polyester shell with 100% cotton lining. Drawstring elastic waist with adjustable toggle for fit. Two on seam side pockets.

**Style Z50282:** Adult S, M, L, XL, 2XL.

**Style Z50283:** Youth M, L, XL.

**Colors:** Black, Navy, Red, Royal.

★ **SEE MORE MIZUNO  
BATTING JERSEYS  
ON PAGE 67.**



## A. Rawlings® Sliding Short

82% polyester/18% spandex, polypropylene pads lined with cotton terry cloth. Cup pocket sewn inside (cup not included).

**Style RMSS:** Adult S, M, L, XL, 2XL.

**Style RYMSS:** Youth S, M, L.

**Color:** White.



## B. Mizuno® Sliding Compression Short

90% cotton/10% Lycra®. Integrated cup pocket (cup not included).

**Style Z50126:** Adult S, M, L, XL, 2XL.

**Style Z50062:** Youth S, M, L.

**Color:** White.

## C



## C. Elastic Baseball Belt

1½" wide elastic webbing on adult. 1¼" wide elastic webbing on youth. Eleven athletic colors.

BLACK	DARK GREEN	GOLD	MAROON	NAVY
ORANGE	POWER PINK	PURPLE	ROYAL	TEAL

**Style 6001:** Adult waist sizes 32" - 46".

**Style 6002:** Youth waist sizes 18" - 32".

**Colors:** Black, Dark Green, Gold, Maroon, Navy, Orange, Power Pink, Purple, Red, Royal, Teal.

## D



## D. Augusta Two-in-One Baseball Stirrup/Sock

Stirrup and sock in one. Made of 70% cotton/30% stretch nylon. Comfortable, durable.

**Style 6011:** Youth: 7-9

**Style 6010:** Intermediate: 9-11

**Style 6015:** Adult: 10-13

**Colors:** Black, Dark Green, Gold, Kelly, Light Blue, Maroon, Navy, Orange, Purple, Red, Royal, Teal.

## E



## E. Augusta Athletic Sock

Solid color, tube sock. 80% acrylic/14% nylon/6% elastic.

**Style 6027:** Youth: 7-9

**Style 6026:** Intermediate: 9-11

**Style 6028:** Adult: 10-13

**Colors:** Black, Columbia Blue, Dark Green, Gold, Kelly, Maroon, Navy, Orange, Power Pink, Purple, Red, Royal, Teal, White.

## F



## F. Augusta Game Sock

100% stretch nylon in solid colors.

**Style 6021:** Youth: 7-9

**Style 6020:** Intermediate: 9-11

**Style 6025:** Adult: 10-13

**Colors:** Black, Dark Green, Gold, Kelly, Maroon, Navy, Orange, Purple, Red, Royal, Teal.

*\* See sock size guide chart located in price list.*



## G. Augusta Pull-Up Pro Pant

100% polyester double knit. Elastic waistband with inside drawcord. Belt loops. Right back patch pocket. Reinforced knees.

**Style 863:** Adult S, M, L, XL.

**Style 864:** Youth XS, S, M, L, XL.

**Colors:** Black, Silver Grey, White.



## I. Augusta Pull-Up Softball/Baseball Pant

Pull-up softball/baseball pant with four-needle elastic waistband. Inside drawstring. Double layer of fabric at knee area. Patch pocket on right rear. 100% polyester knit.

**Style 808:** Adult S, M, L, XL.

**Style 804:** Youth XS, S, M, L, XL.

**Colors:** Black, Navy, Silver Grey, White.



**H**



## H. Majestic® Youth Pull-Up Baseball Pant

100% medium weight polyester double knit. Gathered elastic waistband with drawcord. Set-in back pocket and double knees.

**Style M854Y:** Youth S, M, L, XL.

**Colors:** Silver Grey, White.

*\* Adult sizes are not available.*



**J**



## J. Majestic® Pro-Style Baseball Pant

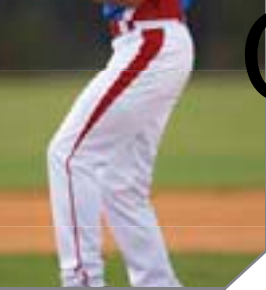
100% medium weight double knit polyester. Pro-style tunnel belt loops. Brass zipper fly with double-snap closure. One welted set-in back pocket with MLB logo and double knees.

**Style M857A:** Adult S, M, L, XL, 2XL.

**Style M857Y:** Youth XS, S, M, L, XL.

**Colors:** Silver Grey, White.





## A. Augusta Triple Play Baseball/Softball Pant

14-ounce 100% polyester double knit. Relaxed fit. Anti-roll elastic waistband. Brass zipper. Two set-in double welt back pockets (one on youth). Reinforced coverstitching at back seam. Reinforced knees. Contrast inserts and piping. 35" inseam on Adult large.

**Style 1465:** Adult S, M, L, XL, 2XL, 3XL.

**Style 1466:** Youth S, M, L, XL.

**Colors:** Silver/Black, Silver/Dark Green, Silver/Maroon, Silver/Navy, Silver/Red, Silver/Royal, White/Black, White/Dark Green, White/Maroon, White/Navy, White/Red, White/Royal.



## C. Wilson® Classic Relaxed Fit Pant

100% polyester warp knit. Elastic waistband with pro-tunnel belt loops. One set-in back pocket with Wilson® logo.

**Style W43300:** Adult S, M, L, XL, 2XL.

**Style W42300:** Youth S, M, L, XL.

**Colors:** Blue Grey, White.



**B**

## B. Augusta Softball/ Baseball Pant

100% polyester knit. Double layer of fabric at knee area. 2½" wide elastic waistband. Tunnel belt loops. Two-snap closure. Zipper fly. Patch pocket on right rear.

**Style 801:** Adult S, M, L, XL.

**Style 811:** Youth S, M, L, XL.

**Colors:** Black, Blue Grey, Navy, Silver Grey, White.



**D**

## D. Augusta Baseball/Softball Pant With Piping

100% polyester double knit with contrast color piping down side seam. 2½" elastic waistband. Double layer of fabric at knee area. Two-snap closure, zipper fly and patch pocket on right rear.

**Style 820:** Adult S, M, L, XL.

**Style 821:** Youth S, M, L, XL.

**Colors:** Silver Grey/Black, Silver Grey/Navy, Silver Grey/Red, Silver Grey/Royal, White/Black, White/Navy, White/Red, White/Royal.







## E. Augusta Open Bottom Baseball/Softball Pant with Piping

14-ounce 100% polyester double knit. Relaxed fit with longer inseam and open bottom. Anti-roll elastic. Brass zipper. Two set-in double welt back pockets (one on youth). Reinforced coverstitching at back and side seam. Reinforced knees. Contrast piping. 35" inseam on Adult large.

**Style 868:** Adult S, M, L, XL, 2XL, 3XL.

**Style 869:** Youth S, M, L, XL.

**Colors:** Blue Grey/Black, Blue Grey/Dark Green, Blue Grey/Navy, Blue Grey/Red, Blue Grey/Royal, White/Black, White/Dark Green, White/Maroon, White/Navy, White/Red, White/Royal.



## G. Mizuno® Full Length Pant

15-ounce 100% polyester double knit fabric. Tunnel belt loop waist. Two set-in back pockets with button closure. Pants have unhemmed leg opening and elastic hem straps are included. The youth pant also comes with Performance Plus Padding for added protection. Adult pant has a 37" inseam. Youth inseam is graded with youth large at 31".

**Style Z50166:** Adult S, M, L, XL, 2XL.

**Style Z50167:** Youth S, M, L, XL.

**Colors:** Silver Grey, White.



**F**



## F. Augusta Striped Open Bottom Baseball Pant

14-ounce 100% polyester double knit fabric. Relaxed fit-full cut with longer inseam and open bottom. Anti-roll waist elastic waistband with seven pro-style belt loops. Two-snap closure with brass zipper fly. Two set-in double welt back pockets (one on youth). Reinforced double-needle coverstitched back rise and side seams. Reinforced knees. 35" inseam on Adult large. Double-needle hemmed bottom.

**Style 882:** Adult S, M, L, XL, 2XL, 3XL.

**Style 883:** Youth S, M, L, XL.

**Colors:** Silver Grey/Black, Silver Grey/Navy, Silver Grey/Red, White/Black, White/Dark Green, White/Maroon, White/Navy, White/Red, White/Royal.



**H**

## H. Augusta Open Bottom Baseball/Softball Pant

14-ounce 100% polyester double knit. Relaxed fit, full-cut with longer inseam and open bottom. Anti-roll elastic waistband with seven pro-style belt loops. Two-snap closure. Brass zipper fly. Two set-in double welt back pockets (one on youth). Reinforced double-needle coverstitched back rise and side seams. Reinforced knees. 35" inseam on Adult large. Double-needle hemmed bottom.

**Style 838:** Adult S, M, L, XL, 2XL.

**Style 839:** Youth S, M, L, XL.

**Colors:** Blue Grey, White.





RACERBACK



## A. Augusta Ladies Wicking Mesh Extreme Jersey

100% polyester wicking mesh with 100% white polyester dazzle fabric side panels. Wicks moisture away from the body. Heat sealed label. Contrast two-color V-neck collar and side panels with accent piping. Double-needle hemmed armholes and bottom.

**Style 515:** Ladies S, M, L, XL, 2XL.

**Style 516:** Girls S, M, L.

**Colors:** Gold/Black/White, Lime/Black/White, Maroon/Gold/White, Navy/Gold/White, Orange/Black/White, Pink/Black/White, Red/Black/White, Royal/Red/White, White/Black/White.

## B. Augusta Ladies Wicking Mesh Extreme Short

100% polyester wicking mesh. Wicks moisture away from the body. Covered elastic waistband with inside drawcord. Contrast color curved side panels with dazzle accent piping. 5" inseam. Double-needle hemmed bottom.

**Style 970:** Ladies S, M, L, XL, 2XL.

**Style 971:** Girls S, M, L.

**Colors:** Gold/Black/White, Lime/Black/White, Maroon/Gold/White, Navy/Gold/White, Orange/Black/White, Pink/Black/White, Red/Black/White, Royal/Red/White, White/Black/White.

## C. Augusta Ladies Wicking Mesh Advantage Jersey

100% polyester wicking mesh with 100% white polyester dazzle fabric side panels. Wicks moisture away from the body. Heat sealed label. Contrast color V-neck collar and side panels with accent piping. Racerback styling. 1 x 1 rib-knit armholes and double-needle hemmed bottom.

**Style 513:** Ladies S, M, L, XL, 2XL.

**Style 514:** Girls S, M, L.

**Colors:** Gold/Black/White, Lime/Black/White, Maroon/Gold/White, Navy/Gold/White, Orange/Black/White, Pink/Black/White, Red/Black/White, Royal/Red/White, White/Black/White.



## D. Augusta Ladies Heat Jersey

92% polyester/8% spandex pinhole mesh. Wicks moisture away from the body. Ladies fit. Self-fabric collar. Contrast color side inserts.

**Style 1270:** Ladies S, M, L, XL, 2XL.

**Style 1271:** Girls S, M, L.

**Colors:** Black/White, Columbia Blue/White, Lime/White, Navy/White, Orange/White, Power Pink/White, Power Yellow/White, Purple/White, Red/White, Royal/White, White/Black.



## F. High 5® Women's Wave Jersey

100% polyester Essortex moisture management fabric. Contrast piping, side panels and rib-knit neck.

**Style H1203A:** Women's S, M, L, XL, 2XL.

**Style H1203V:** Girls S, M, L.

**Colors:** Black/White, Columbia Blue/White, Gold/White, Lime/White, Navy/White, Orange/White, Raspberry/White, Royal/White, Scarlet/White.

E



**HIGH FIVE**

## E. High 5® Women's Flex Jersey

100% polyester Essortex moisture management fabric. Contrast piping and rib-knit V-neck.

**Style H1202A:** Women's S, M, L, XL, 2XL.

**Style H1202V:** Girls S, M, L.

**Colors:** Black/White, Columbia Blue/White, Gold/White, Lime/White, Navy/White, Orange/White, Raspberry/White, Royal/White, Scarlet/White.

G



## G. High 5® Women's Flex Short

100% polyester Essortex moisture management fabric. Contrast piping. 5" inseam on Women's medium. Covered elastic with inside drawcord.

**Style H1502A:** Women's S, M, L, XL, 2XL.

**Style H1502V:** Girls S, M, L.

**Colors:** Black/White, Columbia Blue/White, Gold/White, Lime/White, Navy/White, Orange/White, Raspberry/White, Royal/White, Scarlet/White.



## A. Augusta Ladies Sleeveless Two-Button Jersey

Solid color. Two-button placket front. 1 x 1 rib-knit collar and armholes. Double-needle hemmed bottom. 50% polyester/50% cotton jersey.

**Style 550:** Ladies S, M, L, XL, 2XL.

**Style 551:** Girls S, M, L.

**Colors:** Ash, Black, Dark Green, Heather, Maroon, Navy, Purple, Red, Royal, Teal, White.



## C. Augusta Sleeveless V-Neck Jersey

Ladies' fit V-neck 1 x 1 rib-knit collar and armholes, double-needle hemmed bottom. 50% polyester/50% cotton.

**Style 556:** Ladies S, M, L, XL, 2XL.

**Style 557:** Girls S, M, L.

**Colors:** Ash, Black, Dark Green, Gold, Heather, Light Blue, Maroon, Navy, Orange, Pink, Purple, Red, Royal, Teal, White.

**B**



RACERBACK

## B. Augusta Ladies Racer Back V-Neck Jersey

6-ounce 50% polyester/50% cotton jersey. Racerback styling with rib trim at neck and armholes. Double-needle hem at bottom. Ladies' fit.

**Style 558:** Ladies S, M, L, XL, 2XL.

**Colors:** Ash, Black, Heather, Navy, Red, Royal, White.

**D**



## D. Bomark® Sleeveless Two-Button Jersey

Placket front with rib knit at crew neck and armholes. 50% polyester/50% cotton.

**Style 88612:** Adult S, M, L, XL, 2XL.

**Style 88613:** Youth S, M, L.

**Colors:** Ash, Black, Dark Green, Gold, Maroon, Navy, Orange, Purple, Red, Royal, Teal, White.

*\* While Supplies Last*



## E. Augusta Ladies Wicking Mesh Sleeveless Jersey

100% polyester wicking mesh. Wicks moisture away from the body. Ladies' fit. Heat sealed label. 1 x 1 rib-knit V-neck collar. Double-needle hemmed armholes and bottom.

**Style 525:** Ladies S, M, L, XL, 2XL.

**Style 526:** Girls S, M, L.

**Colors:** Black, Columbia Blue, Gold, Navy, Orange, Pink, Purple, Red, Royal, Silver Grey, White.

## F. Augusta Ladies Tricot Mesh Short/Tricot Lined

Outer layer of 100% polyester tricot mesh. Inner layer of 100% polyester tricot lining. Ladies' fit. Covered elastic waistband with inside drawcord. 5" inseam. Double-needle hemmed bottom.

**Style 858:** Ladies S, M, L, XL, 2XL.

**Colors:** Black, Dark Green, Gold, Navy, Red, Royal.

## G. Augusta Ladies Wicking Mesh Short

100% polyester wicking mesh. Wicks moisture away from the body. Ladies' fit. Covered elastic waistband with inside drawcord. 5" inseam. Double-needle hemmed bottom.

**Style 960:** Ladies S, M, L, XL, 2XL.

**Style 961:** Girls S, M, L.

**Colors:** Black, Columbia Blue, Gold, Navy, Orange, Pink, Purple, Red, Royal, Silver Grey, White.

**F****E****G**



## A. Augusta Ladies Low Rise Softball Pant With Piping

14-ounce 100% polyester double knit fabric. Ladies fit. Low rise waist with drawcord. Two-snap closure with brass zipper fly. Two set-in double welt back pockets (one on youth). Contrast color piping at side seams. Reinforced coverstitching at back and side seams. Two layers of fabric at knee area.

**Style 822:** Ladies S, M, L, XL, 2XL.

**Style 823:** Girls S, M, L.

**Colors:** Black/White, Navy/White, Red/White, Royal/White, Silver Grey/Black, White/Black.



## C. Mizuno® Women's Select Low Rise Pant

100% polyester double-knit. Low rise women's fit. Padding on inside back of pant protects when sliding. Two set-in back pockets. Tunnel belt loops.

**Style Z50150:** Women's XS, S, M, L, XL, 2XL.

**Colors:** Black, Navy, Silver Grey, White.



**B**

## B. Augusta Ladies Low Rise Softball Pant

14-ounce 100% polyester double knit fabric. Ladies fit. Low rise waist with drawcord. Two-snap closure with brass zipper fly. Two set-in double welt back pockets (one on girls). Reinforced coverstitching at back and side seams. Two layers of fabric at knee area. Graded inseams, Elastic cuffs.

**Style 828:** Ladies S, M, L, XL, 2XL.

**Style 829:** Girls S, M, L.

**Colors:** Black, Navy, Silver Grey, White.



**D**



## D. Augusta Ladies Low Rise Drive Pant

14-ounce 100% polyester double knit. Ladies low rise fit. Elastic waistband with inside drawcord. Brass zipper. Set-in back pockets. Contrast color insert and piping. Reinforced knees. Knee length with graded inseam.

**Style 1245:** Ladies S, M, L, XL, 2XL.

**Style 1246:** Girls S, M, L.

**Colors:** Black/Black, Black/White, Navy/White, Red/White, Royal/White, Silver Grey/Silver Grey, White/White.



**E**

**F**



◀ PRO CUT



## **E. Augusta Dazzle Game Jersey**

100% polyester dazzle fabric. Tipped rib-knit V-neck collar with center patch that can be embellished. Contrast color front and back shoulder inserts and accent piping. Double-needle hemmed armholes and bottom.

**Style 785:** Adult S, M, L, XL, 2XL, 3XL.

**Style 786:** Youth S, M, L.

**Colors:** Black/White, Columbia Blue/White, Dark Green/White, Maroon/White, Navy/White, Red/White, Royal/White, White/Black, White/Columbia Blue, White/Dark Green, White/Maroon, White/Navy, White/Red, White/Royal.

## **F. Augusta Dazzle Game Short**

100% polyester dazzle fabric. Full-cut. Covered elastic waistband with inside drawcord. Contrast color front and back inserts with accent piping. 9" inseam. Double-needle hemmed bottom.

**Style 745:** Adult S, M, L, XL, 2XL, 3XL.

**Style 747:** Youth S, M, L.

**Colors:** Black/White, Columbia Blue/White, Dark Green/White, Maroon/White, Navy/White, Red/White, Royal/White, White/Black, White/Columbia Blue, White/Dark Green, White/Maroon, White/Navy, White/Red, White/Royal.

**G**

**H**



◀ PRO CUT



## **G. Augusta Dazzle/Mesh Jersey**

100% polyester dazzle fabric body and stripes with two layers of 100% polyester tricot mesh side inserts. Contrast color 1 x 1 rib-knit V-neck collar. Contrast color mesh side inserts with accent dazzle stripes. Double-needle hemmed armholes and bottoms.

**Style 781:** Adult S, M, L, XL, 2XL, 3XL.

**Style 782:** Youth M, L.

**Colors:** Black/White, Dark Green/White, Maroon/White, Navy/White, Purple/White, Red/White, Royal/White, White/Black, White/Dark Green, White/Maroon, White/Navy, White/Purple, White/Red, White/Royal.

## **H. Augusta Dazzle/Mesh Short**

100% polyester dazzle fabric body and stripes with two layers of 100% polyester tricot mesh side inserts. Full-cut. Covered elastic waistband with inside drawcord. Contrast color mesh side inserts with accent dazzle stripes. Double-needle hemmed bottom.

**Style 717:** Adult S, M, L, XL, 2XL, 3XL.

**Style 719:** Youth M, L.

**Colors:** Black/White, Dark Green/White, Maroon/White, Navy/White, Purple/White, Red/White, Royal/White, White/Black, White/Dark Green, White/Maroon, White/Navy, White/Purple, White/Red, White/Royal.



## A. Augusta Tri-Color Dazzle Game Jersey

100% polyester dazzle fabric. Tipped rib-knit V-neck collar and armholes. Contrasting tri-color side inserts with accent piping. Double-needle hemmed bottom.

**Style 775:** Adult S, M, L, XL, 2XL, 3XL.

**Style 778:** Youth S, M, L.

**Colors:** Columbia Blue/White/Navy, Dark Green/White/Black, Maroon/White/Black, Navy/White/Red, Purple/White/Black, Red/White/Black, Royal/White/Red, Vegas Gold/White/Black, White/Black/White, White/Navy/White, White/Red/White.

## B. Augusta Tri-Color Dazzle Game Short

100% polyester dazzle fabric. Full-cut. Covered elastic waistband with inside drawcord. Contrasting tri-color side inserts with accent piping. 9" inseam with double-needle hemmed bottom.

**Style 715:** Adult S, M, L, XL, 2XL, 3XL.

**Style 716:** Youth S, M, L.

**Colors:** Columbia Blue/White/Navy, Dark Green/White/Black, Maroon/White/Black, Navy/White/Red, Purple/White/Black, Red/White/Black, Royal/White/Red, Vegas Gold/White/Black, White/Black/White, White/Navy/White, White/Red/White.

**Color Key:** ★ First Color Listed/ ★ Second Color Listed/ ★ Third Color Listed



## C. Augusta Reversible Dazzle Jersey

Two layers of 100% polyester dazzle fabric. 1 x 1 rib-knit V-neck collar. Each layer has contrast color side panel with stripe. Each layer is finished separately with double-needle hem to allow for embellishment. Outside locker label near bottom hem.

**Style 755:** Adult S, M, L, XL, 2XL, 3XL.

**Style 756:** Youth S, M, L.

**Colors:** Black/White, Columbia Blue/White, Dark Green/White, Maroon/White, Navy/White, Purple/White, Red/White, Royal/White.

## D. Augusta Long Dazzle Short

100% polyester dazzle fabric. Covered elastic waistband with inside drawcord. 9" inseam with double-needle hemmed bottom.

**Style 926:** Adult S, M, L, XL, 2XL, 3XL, 4XL.

**Style 927:** Youth S, M, L.

**Colors:** Black, Columbia Blue, Dark Green, Maroon, Navy, Purple, Red, Royal, Silver Grey, Vegas Gold, White.





◀ PRO CUT



## E. Augusta Wicking Mesh Game Jersey

100% polyester wicking mesh. Tipped 1 x 1 rib-knit V-neck collar and armholes. Contrasting color side panels, conforms to NFHS regulations.

**Style 795:** Adult S, M, L, XL, 2XL, 3XL.

**Style 796:** Youth S, M, L.

**Colors:** Black/White, Columbia Blue/White, Dark Green/White, Maroon/White, Navy/White, Purple/White, Red/White, Royal/White, White/Black, White/Columbia Blue, White/Dark Green, White/Maroon, White/Navy, White/Purple, White/Red, White/Royal.

## F. Augusta Wicking Mesh Game Short

100% polyester wicking mesh. Covered elastic waistband with inside drawcord. Contrasting color side panels. 7" inseam.

**Style 735:** Adult S, M, L, XL, 2XL, 3XL.

**Style 736:** Youth S, M, L.

**Colors:** Black/White, Columbia Blue/White, Dark Green/White, Maroon/White, Navy/White, Purple/White, Red/White, Royal/White, White/Black, White/Columbia Blue, White/Dark Green, White/Maroon, White/Navy, White/Purple, White/Red, White/Royal.



◀ PRO CUT



★ CONFORMS TO NFHS REGULATIONS

## G. Augusta Reversible Wicking Game Jersey

100% polyester wicking knit with 100% polyester dazzle tricot fabric. Wicks moisture away from the body. Self-fabric V-neck collar. Contrast color inserts. Each layer hemmed separately with a double-needle hem to allow for embellishment of both layers. Conforms to NFHS regulations.

**Style 685:** Adult S, M, L, XL, 2XL, 3XL.

**Style 686:** Youth S, M, L.

**Colors:** Black/White, Dark Green/White, Maroon/White, Navy/White, Purple/White, Red/White, Royal/White.

## H. Augusta Reversible Wicking Game Short

100% polyester wicking knit with 100% polyester dazzle tricot fabric. Wicks moisture away from the body. Contrast color inserts. Each layer hemmed separately with a double-needle hem to allow for embellishment of both layers. 9" inseam on Adult sizes.

**Style 691:** Adult S, M, L, XL, 2XL, 3XL.

**Style 692:** Youth S, M, L.

**Colors:** Black/White, Dark Green/White, Maroon/White, Navy/White, Purple/White, Red/White, Royal/White.



◀ PRO CUT



## A. Augusta Baseline Jersey

100% polyester wicking smooth knit. Odor resistant. Wicks moisture away from the body. Self-fabric collar. Double-needle armholes and bottom. Conforms to NFHS regulations.

**Style 1060:** Adult S, M, L, XL, 2XL, 3XL.

**Style 1061:** Youth S, M, L.

**Colors:** Black, Columbia Blue, Dark Green, Maroon, Navy, Orange, Purple, Red, Royal, White.

## B. Augusta Baseline Short

100% polyester wicking smooth knit. Odor resistant. Wicks moisture away from the body. Full cut. Covered elastic waistband with inside drawcord. 9" inseam. Youth inseam graded. Double-needle hemmed bottom. Conforms to NFHS regulations.

**Style 1065:** Adult S, M, L, XL, 2XL, 3XL.

**Style 1066:** Youth S, M, L.

**Colors:** Black, Columbia Blue, Dark Green, Maroon, Navy, Orange, Purple, Red, Royal, White.



## C. Augusta Reversible Mini Mesh League Tank

Two layers of 100% polyester mini mesh fabric, fully reversible for wearing on either side, bottom of each layer is finished separately to allow for embellishment and lettering.

**Style 136:** Adult S, M, L, XL, 2XL, 3XL.

**Style 137:** Youth S, M, L.

**Colors:** Black/Gold, Black/White, Columbia Blue/White, Dark Green/White, Gold/White, Kelly/White, Maroon/White, Navy/Gold, Navy/White, Orange/White, Purple/White, Red/White, Royal/Gold, Royal/White, Vegas Gold/White.



## D. Augusta Tricot Reversible Tank

Two layers of 100% polyester tricot mesh. Fully reversible. Bottom hem finished separately for ease of embellishment. Outside locker label.

**Style 197:** Adult S, M, L, XL, 2XL, 3XL.

**Style 198:** Youth S, M, L.

**Colors:** Black/Gold, Black/White, Columbia Blue/White, Dark Green/White, Gold/White, Maroon/White, Navy/Gold, Navy/White, Orange/White, Purple/Gold, Purple/White, Red/Black, Red/White, Royal/Gold, Royal/ White.



## F. Augusta Wicking Mesh Warmup Shirt

100% polyester wicking mesh. Heat sealed label. Tipped rib-knit lap-over collar. Contrast color inserts and piping. Self-fabric cuffs and double-needle hemmed bottom.

**Style 4600:** Adult XS, S, M, L, XL, 2XL, 3XL.

**Style 4601:** Youth S, M, L.

**Colors:** Black/White, Dark Green/White, Maroon/White, Navy/White, Purple/White, Red/White, Royal/White.

**E**



## E. Augusta Poly/Cotton Athletic Tank

50% polyester/50% cotton jersey knit. Self-fabric binding at neck and armholes.

**Style 180:** Adult S, M, L, XL, 2XL, 3XL.

**Style 181:** Youth S, M, L.

**Colors:** Ash, Athletic Heather, Black, Dark Green, Gold, Kelly, Light Blue, Maroon, Navy, Orange, Purple, Red, Royal, White.

**G**



## G. Augusta Men's Sleeveless T-Shirt

50% polyester/50% cotton sleeveless T-shirt with two-needle hemmed armholes. Two-needle set-on rib crew-neck.

**Style 203:** Adult S, M, L, XL, 2XL.

**Style 204:** Youth M, L.

**Colors:** Ash, Black, Dark Green, Gold, Heather, Maroon, Navy, Purple, Red, Royal, White.



## A. Augusta Mini Mesh League Short

Two layers of 100% polyester mini mesh fabric, elastic waistband with inside drawcord. 7" inseam on Adult sizes, double-needle hemmed bottom.

**Style 733:** Adult S, M, L, XL, 2XL, 3XL.

**Style 734:** Youth S, M, L.

**Colors:** Black, Columbia Blue, Dark Green, Gold, Kelly, Maroon, Navy, Orange, Purple, Red, Royal, Vegas Gold.



## C. Augusta Adult Longer Length Mini Mesh League Short

Two layers of 100% polyester mini mesh. Elastic waistband with inside drawcord. 9" inseam on Adult sizes. Double-needle hemmed bottom.

**Style 738:** Adult S, M, L, XL, 2XL, 3XL.

**Colors:** Black, Columbia Blue, Dark Green, Gold, Kelly, Maroon, Navy, Orange, Purple, Red, Royal, Vegas Gold.

**B**

**PRO CUT ►**



## B. Augusta Extra Long Tricot Mesh Short

Two layers of 100% polyester tricot mesh. Full-cut. Covered elastic waistband with inside drawcord. 11" inseam with double-needle hemmed bottom.

**Style 865:** Adult S, M, L, XL, 2XL, 3XL.

**Colors:** Black, Columbia Blue, Dark Green, Maroon, Navy, Purple, Red, Royal, Silver Grey.

**D**

**PRO CUT ►**



## D. Augusta Long Tricot Mesh Short/Tricot Lined

Outer layer of 100% polyester tricot mesh. Inner layer of 100% polyester tricot lining. Full-cut. Elastic waistband with inside drawcord. 9" inseam. Double-needle hemmed bottom.

**Style 848:** Adult S, M, L, XL, 2XL, 3XL.

**Colors:** Black, Dark Green, Maroon, Navy, Red, Royal.





◀ PRO CUT



## E. Augusta Training Short

100% polyester wicking knit. Full-cut. Heat sealed label. Covered elastic waistband with inside drawcord. 9" inseam. Double-needle hemmed bottom

**Style 1420:** Adult S, M, L, XL, 2XL, 3XL.

**Style 1421:** Youth S, M, L.

**Colors:** Black, Dark Green, Maroon, Navy, Red, Royal, Silver Grey.



◀ PRO CUT



## G. Augusta Longer Length Poly/Spandex Short

90% polyester/10% spandex knit. Odor resistant. Wicks moisture away from the body. Heat sealed label. Full-cut with 9" inseam. Covered elastic waistband with inside drawcord. Double-needle hemmed bottom.

**Style 943:** Adult S, M, L, XL, 2XL, 3XL.

**Style 944:** Youth S, M, L.

**Colors:** Black, Dark Green, Maroon, Navy, Red, Royal, Silver Grey.

**F**



## F. Augusta Longer Length Micromesh Short

Two-ply micromesh short. Outer layer is 100% nylon micromesh, lined with 100% nylon tricot. Inside drawstring. 9" inseam on Adult sizes.

**Style 754:** Adult S, M, L, XL, 2XL.

**Colors:** Black, Dark Green, Gold, Navy, Red, Royal.

**H**



## H. Augusta Micromesh Short

Two-ply short. Outer layer is 100% nylon micromesh, lined with 100% nylon tricot. Inside drawstring. 7" inseam on Adult sizes.

**Style 744:** Adult S, M, L, XL, 2XL.

**Style 746:** Youth M, L.

**Colors:** Black, Dark Green, Gold, Navy, Red, Royal.

**Additional Adult colors:** Maroon, Purple.

**A**

**PRO CUT ▶**



**B**

**PRO CUT ▶**



## **A. Augusta Longer Length Wicking Mesh Athletic Short**

100% polyester wicking mesh. Wicks moisture away from the body. Full-cut. Covered elastic waistband with inside drawcord. 9" inseam. Double-needle hemmed bottom.

**Style 802:** Adult S, M, L, XL, 2XL, 3XL.

**Colors:** Black, Dark Green, Maroon, Navy, Red, Royal, Silver Grey.

## **B. Augusta Wicking Mesh Athletic Short**

100% polyester wicking mesh. Wicks moisture away from the body. Full-cut. Covered elastic waistband with inside drawcord. 7" inseam. Double-needle hemmed bottom.

**Style 805:** Adult S, M, L, XL, 2XL, 3XL.

**Style 806:** Youth S, M, L.

**Colors:** Black, Dark Green, Maroon, Navy, Red, Royal, Silver Grey.

## **C. Augusta Dazzle Short**

Heavyweight 100% polyester dazzle cloth. Inside drawstring. 7" inseam on Adult sizes.

**Style 920:** Adult S, M, L, XL, 2XL.

**Colors:** Black, Dark Green, Navy, Red, Royal.



◀ PRO CUT



## D. Augusta Ladies Reversible Wicking Game Jersey

100% polyester wicking knit and 100% polyester dazzle tricot. Ladies fit. Wicks moisture away from the body. Self-fabric V-neck collar. Contrast color inserts on body and each layer is hemmed separately with double-needle hem to allow for embellishment. NFHS compliant.

**Style 687:** Ladies S, M, L, XL, 2XL.

**Colors:** Black/White, Dark Green/White, Maroon/White, Navy/White, Purple/White, Red/White, Royal/White.

\* See Youth tops on page 35.

## E. Augusta Reversible Wicking Game Short

100% polyester wicking knit with 100% polyester dazzle tricot fabric. Wicks moisture away from the body. Contrast color inserts. Each layer hemmed separately with a double-needle hem to allow for embellishment of both layers. 9" inseam on Adult sizes.

**Style 691:** Adult S, M, L, XL, 2XL, 3XL.

**Style 692:** Youth S, M, L.

**Colors:** Black/White, Dark Green/White, Maroon/White, Navy/White, Purple/White, Red/White, Royal/White.



## F. Augusta Ladies Tricot Mesh Short/Tricot Lined

Outer layer of 100% polyester tricot mesh. Inner layer of 100% polyester tricot lining. Ladies' fit. Covered elastic waistband with inside drawcord. 5" inseam. Double-needle hemmed bottom.

**Style 858:** Ladies S, M, L, XL, 2XL.

**Colors:** Black, Dark Green, Gold, Navy, Red, Royal.



## G. Augusta Ladies Wicking Mesh Short

100% polyester wicking mesh. Wicks moisture away from the body. Ladies' fit. Covered elastic waistband with inside drawcord. 5" inseam. Double-needle hemmed bottom.

**Style 960:** Ladies S, M, L, XL, 2XL.

**Style 961:** Girls S, M, L.

**Colors:** Black, Columbia Blue, Gold, Navy, Orange, Pink, Purple, Red, Royal, Silver Grey, White.

★ CONFORMS TO NFHS REGULATIONS



## A. Augusta Dominator Football Jersey

100% polyester diamond mesh body with 100% polyester dazzle sleeves. 90% polyester/10% spandex on contrast color shoulder and side inserts. V-neck collar. Elastic cuffs. Reinforced seams. Full cut to accommodate pads.

**Style 9520:** Adult S, M, L, XL, 2XL, 3XL.

**Style 9521:** Youth S, M, L, XL.

**Colors:** Black/White, Columbia Blue/White, Dark Green/White, Gold/White, Maroon/White, Navy/White, Orange/White, Purple/White, Red/White, Royal/White, Vegas Gold/White.



## C. Augusta Intimidator Football Jersey

100% polyester diamond mesh body. 100% polyester dazzle two ply yoke and sleeves. 90% polyester/10% spandex side inserts. Full cut to accommodate pads. Reinforced stitching on all seams. Elastic cuffs.

**Style 9510:** Adult S, M, L, XL, 2XL, 3XL.

**Style 9511:** Youth S, M, L, XL.

**Colors:** Black, Columbia Blue, Dark Green, Gold, Maroon, Navy, Orange, Purple, Red, Royal, Vegas Gold, White.

**B**



## B. Augusta Two-A-Day Football Jersey

100% polyester diamond mesh. Front and back yoke is two layers. Full cut to accommodate pads. Reinforced stitching on all seams.

**Style 9500:** Adult S/M, L/XL, 2XL, 3XL.

**Style 9501:** S/M, L/XL.

**Colors:** Black, Dark Green, Gold, Maroon, Navy, Red, Royal, White.

**D**



## D. Augusta Tricot Mesh Jersey

100% polyester tricot mesh fabric. 1 x 1 rib-knit modified V-neck collar. Yoke is two layers. Oversized shoulders and full-cut sleeves to accommodate pads. Double-needle hemmed sleeves and bottom.

**Style 240:** Adult S, M, L, XL, 2XL, 3XL.

**Style 241:** Youth S, M, L.

**Colors:** Black, Dark Green, Gold, Maroon, Navy, Red, Royal, White.





## E. Augusta Porthole Mesh Football Jersey

100% polyester porthole mesh body and sleeves. 100% polyester dazzle fabric two-ply yoke. Rib-knit modified V-neck collar. Oversize shoulders and full-cut sleeves to accommodate pads.

**Style 283:** Adult S/M, L/XL, 2XL, 3XL.

**Style 284:** Youth M, L, XL.

**Colors:** Black, Dark Green, Gold, Maroon, Navy, Purple, Red, Royal, White.



## G. Adams USA® Football Game Jersey

Traditional double yoke construction with 100% nylon dazzle outer layer. Full length body of 100% nylon tricot mesh. 100% nylon dazzle sleeve with gathered elastic cuff. 1" rib V-neck and stretch side panels.

**Style FFJ3:** Adult S/M, L/XL, 2XL, 3XL.

**Style FFJV3:** Youth M, L, XL.

**Colors:** Black, Dark Green, Gold, Maroon, Navy, Purple, Royal, Scarlet, White.

*\* While Supplies Last.*



**ADAMS**  
USA

## F. Adams USA® Football Adult Polyester Pant

100% polyester 13-ounce double knit slotted pants with thigh and knee pad pockets. 10 slots for belt. Youth has 6 snaps and half belt. Belt sold separately.

**Style FFP880:** Adult S, M, L, XL, 2XL, 3XL.

**Style FYFP80:** Youth S, M, L, XL, 2XL.

**Colors:** Black, White.

*\* While Supplies Last.*



## H. Augusta Gridiron Football Pant

100% polyester double knit. 7 sewn-in pads (hips, tail, thighs, knees). Perforated hip and tail pads for extra breathability. Belt with D-ring closure. No fly front.

**Style 9600:** Adult S, M, L, XL, 2XL, 3XL.

**Style 9601:** Youth XXS, XS, S, M, L, XL, 2XL.

**Colors:** Black, Silver Grey, White



## A. Mizuno® Premier Stretch Sleeve Shirt

Lightweight MzO™ micro-fiber polyester with Lycra® wicks moisture away from the body. Stretch fabric for a greater range of motion. Low crew neck for greater comfort.

**Style Z50171:** Adult XXS, XS, S, M, L, XL, 2XL.

**Colors:** Black, Navy, Red, Royal.



## C. Augusta Performance Wicking T-Shirt

100% polyester fabric wicks moisture away from body. Self-fabric collar with topstitching. Set-in sleeves. Coverstitching at armholes. Double-needle stitching at sleeves and bottom hem.

**Style 790:** Adult S, M, L, XL, 2XL, 3XL.

**Style 791:** Youth M, L.

**Colors:** Black, Columbia Blue, Dark Green, Gold, Maroon, Navy, Orange, Purple, Red, Royal, Silver, White.

**B**

**PRO CUT ►**



## B. Augusta Long Tricot Mesh Short/Tricot Lined

Outer layer of 100% polyester tricot mesh. Inner layer of 100% polyester tricot lining. Full-cut. Elastic waistband with inside drawcord. 9" inseam. Double-needle hemmed bottom.

**Style 848:** Adult S, M, L, XL, 2XL, 3XL.

**Colors:** Black, Dark Green, Maroon, Navy, Red, Royal.

**D**



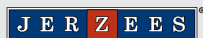
## D. Augusta Equipment Bags - Large/Medium

600-denier polyester with PVC coating. Zippered compartment with heavy zipper and two zipper pulls. Zippered front compartment removes for embellishment. Reinforced at all stress points. Durable vinyl on bottom of bag.

**Style 1780:** 39" x 19" x 15".

**Style 1785:** 35" x 17" x 15".

**Color:** Black.



## E. JERZEES® Heavyweight Poly/Cotton T-Shirt

Ribbed crew neck. Short set-in sleeves. Shoulder-to-shoulder taping and two-needle hemming. 50% polyester/50% cotton.

**Style 29M:** Adult S, M, L, XL, 2XL, 3XL, 4XL\*.

**Style 29B:** Youth XS\*\*, S, M, L.

**Colors:** Birch, Black, Brown, Burnt Orange, California Blue, Cyber Pink, Forest Green, Gold, Island Yellow, Jade, Kelly, Khaki Brown, Light Blue, Light Pink, Maroon, Natural, Navy, Oxford, Purple, Red, Royal, Safety Green, Vegas Gold, White.

\* 4XL offered in Birch, Black, Navy, Oxford, Red, Royal, White.

\*\* Youth XS offered in White only.

See color chart on page 62.

**G**



## G. Augusta Game Sock

100% stretch nylon in solid colors.

**Style 6021:** Youth: 7-9

**Style 6020:** Intermediate: 9-11

**Style 6025:** Adult: 10-13

**Colors:** Black, Dark Green, Gold, Kelly, Maroon, Navy, Orange, Purple, Red, Royal, Teal.

\* See sock size guide chart located in price list.

**F**



## F. Adams USA® Football Belt

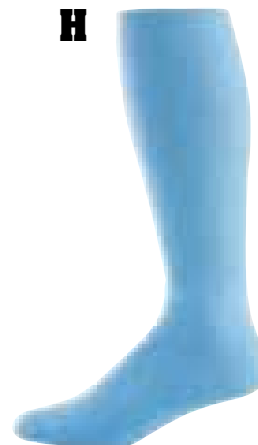
1" polypropylene web belt with reinforced D-ring.

**Style F510:** One size fits all.

**Colors:** Black, Navy, Scarlet, Silver Grey, White.

\* While Supplies Last.

**H**



## H. Augusta Athletic Sock

Solid color, tube sock. 80% acrylic/14% nylon/6% elastic.

**Style 6027:** Youth: 7-9

**Style 6026:** Intermediate: 9-11

**Style 6028:** Adult: 10-13

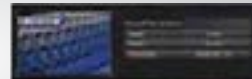
**Colors:** Black, Columbia Blue, Dark Green, Gold, Kelly, Maroon, Navy, Orange, Power Pink, Purple, Red, Royal, Teal, White.

• **HEXPAD®** technology is made up of individual hexagon shaped pads that are fused to pro-style compression fabric allowing for a contoured fit that conforms to and moves with the body for continuous protection.

• **HEXPAD®** is lightweight and breathable.



HEXPAD® (mono-cellular) is engineered for all sports protection



U.S. PATENT NO. 6,743,325 | EUROPEAN PATENT NO. EP1194050



#### A. McDavid® HexPad® Girdle

Pro Compression Girdle with HexPad® technology protecting hips and tailbone. Includes pockets for thigh pads (**pads not included**).

**Style D755T:** Adult S, M, L, XL, 2XL, 3XL.

**Style D755Y:** Youth S, M, L.

**Colors:** Grey, White.



#### B. McDavid® HexPad® Thudd Short™

HexPad® technology protection on thigh, hip and tailbone. Perfect for all sports.

**Style D757T:** Adult S, M, L, XL, 2XL, 3XL.

**Style D757Y:** Youth M, L.

**Colors:** Black.



#### C. McDavid® HexPad® Girdle with Hardshell Thigh Guard

Pro Compression Girdle with HexPad® technology protecting hips and tailbone. Includes new hard shell thigh pads designed to meet high school rules.

**Style D7555T:** Adult S, M, L, XL, 2XL, 3XL.

**Style D7555Y:** Youth S, M, L.

**Colors:** Grey, White.



#### D. McDavid® Sliding Short with FlexCup™

Ventilated padding protects thighs and buttocks when sliding. Moisture management keeps players cool and dry. Includes FlexCup™ for maximum protection and lightweight comfort.

**Style D7212T:** Adult S, M, L, XL, 2XL.

**Style D7212Y:** Youth R, L (R is Regular).

**Colors:** White/Grey.



ADULT

YOUTH

FLEXCUP™





## E. Rawlings® Sliding Short

82% polyester/18% spandex, polypropylene pads lined with cotton terry cloth. Cup pocket sewn inside.

**Style RMSS:** Adult S, M, L, XL, 2XL.

**Style RYMSS:** Youth S, M, L.

**Color:** White.



## G. Mizuno® Sliding Compression Short

90% cotton/10% Lycra®. Integrated cup pocket (cup not included).

**Style Z50126:** Adult S, M, L, XL, 2XL.

**Style Z50062:** Youth S, M, L.

**Color:** White.

**F**



## F. McDavid® Womens Combo HexPad® Slider

HexPad® technology protection on areas with most sliding contact with double layer ventilated padding on areas with less protection is needed. Low rise waistband. Moisture management keeps players cool and dry.

**Style D7260W:** Womens S, M, L, XL.

**Color:** Black.

**H**



## H. McDavid® Youth/PeeWee Brief with FlexCup™

Classic Brief cut for younger players. Includes FlexCup™ for maximum protection and lightweight comfort.

**Style D9110Y:** Youth R, L (R is Regular)

**Style D9110P:** PeeWee R, L (R is Regular)

**Color:** White.



**YOUTH**



**PEEWEE**

**FLEXCUP™**

A



### A. McDavid® HexPad® Impact Pad

HexPad® technology protection in low profile form fitting knee/elbow pad. Sold in pairs.

**Style D6515T:** Adult S, M, L, XL, 2XL.

**Color:** Black.



### B. McDavid® HexForce™ Knee/Shin/Elbow Pad

HexPad® technology protection in a versatile knee/shin/elbow pad. Sold in pairs.

**Style D6440T:** Adult XS, S, M, L, XL, 2XL.

**Color:** Black.



### C. Wilson® Profile™ Volleyball Kneepads

Thin, low profile construction. Cushioned PU foam for shock absorption. Machine washable.

**Style W2510:** Adult.

**Colors:** Black, White.



### D. High 5® Shin Guard

Full art print over non-woven material with EVA foam backing. Three sewn-in plastic stays. Velcro® closure on elastic calf strap. High-density foam ankle with elastic strap.

**Style H790:**

<b>Sizes:</b>	YS 5.75"	YM 6.75"	YL 7.75"
	AS 8.50"	AM 9.25"	AL 10.00"

**Colors:** Royal/Black.

E



### E. McDavid® HexPad® Arm Sleeve

HexPad® technology protection for arm. Moisture management keeps players cool and dry. Sold in pairs.

**Style D651T:** Adult S, M, L, XL, 2XL.

**Style D651Y:** Youth M, L.

**Color:** Black.

F



### F. Mizuno® Premier Stretch Sleeve Shirt

Lightweight MzO™ micro-fiber polyester with Lycra® wicks moisture away from the body. Stretch fabric for a greater range of motion. Low crew neck for greater comfort.

**Style Z50171:** Adult XXS, XS, S, M, L, XL, 2XL.

**Colors:** Black, Navy, Red, Royal.





## G. Augusta Gameday Crew

100% polyester wicking smooth knit. Odor resistant. Heat sealed label. Self-fabric collar. Set-in sleeves. Double-needle hemmed sleeves and bottom.

**Style 1020:** Adult S, M, L, XL, 2XL, 3XL, 4XL.

**Style 1021:** Youth S, M, L.

**Colors:** Black/Vegas Gold, Black/White, Dark Green/Vegas Gold, Dark Green/White, Maroon/Vegas Gold, Maroon/White, Navy/Orange, Navy/Vegas Gold, Navy/White, Orange/White, Purple/White, Red/Black, Red/White, Royal/Black, Royal/Orange, Royal/White, Vegas Gold/White, White/Black, White/Navy, White/Red, White/Royal.



**HIGH FIVE**

## I. High 5® Arsenal Jersey

100% soft-touch polyester with Essortex moisture management. Contrasting set-in sleeves.

**Style H2275A:** Adult S, M, L, XL, 2XL.

**Style H2275Y:** Youth S, M, L.

**Colors:** Black/White, Columbia Blue/White, Forest/White, Gold/White, Kelly/White, Lime/White, Navy/White, Orange/White, Purple/White, Royal/White, Scarlet/White, White/Black.



**H**



## H. Augusta Wicking Soccer Shirt

100% polyester wicking knit. Heat sealed label. Contrast color rib-knit V-neck collar and side panels. Raglan sleeves with contrast piping.

**Style 243:** Adult S, M, L, XL, 2XL.

**Style 244:** Youth S, M, L.

**Colors:** Columbia Blue/Black, Dark Green/White, Gold/Black, Kelly/White, Lime/Black, Maroon/White, Navy/White, Orange/Black, Purple/White, Red/White, Royal/White, Silver/Black, Teal/Black, White/White.

**J**



## J. High 5® Starter Jersey

100% polyester high-sheen jacquard fabric. Short set-in sleeves with contrasting piping. Fashionable two-color jacquard V-neck trim.

**Style H201A:** Adult S, M, L, XL.

**Style H201Y:** Youth S, M, L.

**Colors:** Forest, Gold, Lime, Navy, Orange, Purple, Royal, Scarlet, Silver, Sky, Teal, White.



**HIGH FIVE**

## A. High 5® Stadium Jersey

100% soft-touch polyester with Essortex moisture management technology. Short raglan sleeves with contrasting piping. Self-fabric V-neck.

**Style H2261A:** Adult S, M, L, XL, 2XL

**Style H2261Y:** Youth S, M, L.

**Colors:** Black/White, Columbia Blue/Black, Forest/White, Gold/Black, Kelly/White, Lime/Black, Navy/White, Orange/Black, Royal/White, Scarlet/White, Silver/Black, White/White.



## C. Augusta Wicking Mesh Tri-Color Jersey

100% polyester wicking mesh. Rib-knit collar with heat sealed label. Contrast color sleeve inserts. Raglan sleeves. Double-needle hemmed sleeves and bottom.

**Style 875:** Adult S, M, L, XL, 2XL, 3XL

**Style 876:** Youth S, M, L.

**Colors:** Black/White/Silver, Columbia Blue/White/Silver, Dark Green/White/Silver, Gold/White/Silver, Maroon/White/Silver, Navy/White/Silver, Orange/White/Silver, Purple/White/Silver, Red/White/Silver, Royal/White/Silver, Silver/White/Black, White/Silver/Black.



**B**



## B. Augusta Sleeve Stripe Jersey

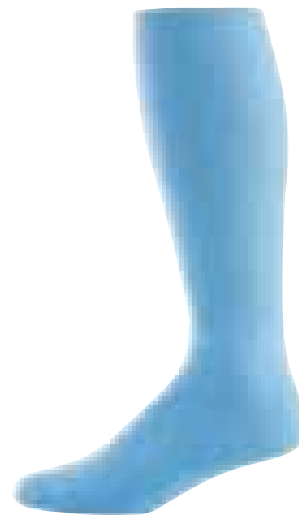
50% polyester/50% cotton. V-neck. Set-in sleeves. Contrasting two-stripe trim.

**Style 360:** Adult S, M, L, XL, 2XL

**Style 361:** Youth S, M, L.

**Colors:** Black/Gold, Black/White, Dark Green/White, Gold/White, Kelly/White, Light Blue/White, Maroon/White, Navy/Gold, Navy/White, Pink/White, Purple/White, Orange/White, Red/Black, Red/White, Royal/White, White/Red.

**D**



## D. Augusta Athletic Sock

Solid color, tube sock. 80% acrylic/14% nylon/6% elastic. See sock size guide in price list.

**Style 6027:** Youth: 7-9

**Style 6026:** Intermediate: 9-11

**Style 6028:** Adult: 10-13

**Colors:** Black, Columbia Blue, Dark Green, Gold, Kelly, Maroon, Navy, Orange, Power Pink, Purple, Red, Royal, Teal, White.



**E**



## **E. High 5® Horizon Short**

100% Polyester Essortex wicking fabric with contrasting color white piping. 6" inseam on Adult large. Covered waistband with inside drawcord. Double-needle hem.

**Style H2537A:** Adult S, M, L, XL, 2XL.

**Style H2537Y:** Youth S, M, L.

**Colors:** Black/White, Navy/White, Royal/White, Scarlet/White.

**G**



## **G. Augusta Dazzle Soccer Short**

Dazzle fabric in a soccer cut. 5" inseam on Adult sizes. V-notch leg. Covered elastic waistband with extra length drawstring in elastic waist. Double-needle hemmed bottom. 100% polyester.

**Style 930:** Adult S, M, L, XL, 2XL.

**Style 931:** Youth S, M, L.

**Colors:** Black, Dark Green, Maroon, Navy, Red, Royal, White.

**F**



## **F. Augusta Wicking Soccer Short With Piping**

100% polyester wicking knit. Covered elastic waistband with inside drawcord. 6" inseam on adult. Youth inseam graded.

**Style 460:** Adult S, M, L, XL, 2XL.

**Style 461:** Youth XS, S, M, L.

**Colors:** Black/Black.

**H**



## **H. High 5® Aero Short**

100% soft-touch polyester with Essortex moisture management. 5½" inseam on Adult Large. Inside drawcord.

**Style H2530A:** Adult S, M, L, XL, 2XL.

**Style H2530Y:** Youth S, M, L.

**Colors:** Black, Navy, Royal, Scarlet, White.



## A. Augusta Ladies MVP Jersey

92% polyester/8% spandex wicking pinhole mesh. Ladies fit with self-fabric V-neck collar and contrasting inserts. 27" graded body length.

**Style 1300:** Ladies S, M, L, XL, 2XL.

**Style 1301:** Girls S, M, L.

**Colors:** Black/White, Columbia Blue/White, Lime/White, Navy/White, Orange/White, Power Pink/White, Power Yellow/White, Purple/White, Red/White, Royal/White, White/White.



## C. Augusta Sleeveless V-Neck Jersey

Ladies' fit. V-neck 1 x 1 rib-knit collar and armholes. Double-needle stitching at bottom hem. 50% polyester/50% cotton jersey.

**Style 556:** Ladies S, M, L, XL, 2XL.

**Style 557:** Girls S, M, L.

**Colors:** Ash, Black, Dark Green, Gold, Heather, Light Blue, Light Pink, Maroon, Navy, Orange, Purple, Red, Royal, Teal, White.

★ **SEE SOCKS  
ON PAGE 24.**



**B**



## B. Augusta Ladies Poly/Spandex 2.5" Short

90% polyester/10% spandex wicking knit. Odor resistant. Ladies low rise fit. No side seams. 2½" inseam.

**Style 1210:** Ladies S, M, L, XL, 2XL.

**Style 1211:** Girls XS, S, M, L.

**Colors:** Black, Columbia Blue, Dark Green, Gold, Kelly, Maroon, Navy, Orange, Purple, Red, Royal.

**D**



## D. High 5® Reflex Volleyball Short

Women's cut volleyball short. 88% cotton, 12% spandex fabric. 4" inseam on all sizes. Gusseted crotch. Elastic waistband.

**Style H4551A:** Women's XS, S, M, L, XL, 2XL.

**Colors:** Black, Navy.



**HIGH FIVE**

## **E. High 5® Women's Flex Jersey**

100% polyester Essortex moisture management fabric. Contrast piping and rib-knit V-neck.

**Style H1202A:** Women's S, M, L, XL, 2XL.

**Style H1202Y:** Girls S, M, L.

**Colors:** Black/White, Columbia Blue/White, Gold/White, Lime/White, Navy/White, Orange/White, Raspberry/White, Royal/White, Scarlet/White.



## **G. High 5® Women's Wave Jersey**

100% polyester Essortex moisture management fabric. Contrast piping, side panels and rib-knit neck.

**Style H1203A:** Women's S, M, L, XL, 2XL.

**Style H1203Y:** Girls S, M, L.

**Colors:** Black/White, Columbia Blue/White, Gold/White, Lime/White, Navy/White, Orange/White, Raspberry/White, Royal/White, Scarlet/White.

**H**

**F**



## **F. High 5® Tyro Poly Spandex Short**

90% polyester/10% spandex. Women's cut low-rise volleyball short. 4" inseam on all sizes. Elastic waistband. Lined and gusseted for comfort.

**Style H4555A:** Women's S, M, L, XL, 2XL.

**Style H4555Y:** Girls S, M, L.

**Colors:** Black, Navy.



## **H. High 5® Axiom Volleyball Jersey**

Women's fitted performance jersey with raglan cap sleeves. 100% Polyester eyelet jacquard fabric with Essortex moisture management technology. Contrasting panels. Rib-knit and self-fabric combination V-neck.

**Style H4201A:** Women's XS, S, M, L, XL, 2XL.

**Colors:** Black/White, Dark Green/White, Navy/White, Royal/White, Scarlet/White, White/Black.



## A. Augusta Ladies Pride Shell

100% polyester double knit. Ladies' fit. V-neck. Contrast color upper front panel with two-color rib knit trim. Double-needle hemmed armholes and bottom.

**Style 9110:** Ladies S, M, L, XL, 2XL.

**Style 9111:** Girls XXS, XS, S, M, L.

**Colors:** Black/Gold/White, Black/Orange/White, Black/White, Columbia Blue/White, Dark Green/White, Gold/White, Kelly/White, Maroon/White, Navy/Gold/White, Navy/Red/White, Navy/White, Orange/White, Purple/Gold/White, Purple/White, Red/Black/White, Red/White, Royal/White.

## B. Ladies/Girls Liberty Skirt

100% polyester double knit. Ladies' fit. Covered elastic waistband. Contrast color pressed box pleats with yoke.

**Style 9115:** Ladies S, M, L, XL, 2XL.

**Style 9116:** Girls XXS, XS, S, M, L.

**Colors:** Black/Gold, Black/Orange, Black/White, Columbia Blue/White, Dark Green/White, Gold/White, Kelly/White, Maroon/White, Navy/White, Navy/Red, Navy/Gold, Orange/White, Purple/Gold, Purple/White, Red/Black, Red/White, Royal/White.

## C. Augusta Ladies Explosion Shell

100% polyester double knit. Ladies' fit. V-neck. Contrast color triangular side panels with two-color rib trim.

**Style 9120:** Ladies S, M, L, XL, 2XL.

**Style 9121:** Girls XXS, XS, S, M, L.

**Colors:** Black/White, Dark Green/White, Gold/White, Maroon/White, Navy/White, Purple/White, Red/White, Royal/White.

## D. Augusta Ladies Energy Skirt

100% polyester double knit. Ladies' fit. Covered elastic waistband. Front left V-notch on bottom with two-color trim.

**Style 9125:** Ladies S, M, L, XL, 2XL.

**Style 9126:** Girls XXS, XS, S, M, L.

**Colors:** Black/White, Dark Green/White, Gold/White, Maroon/White, Navy/White, Purple/White, Red/White, Royal/White.



**E**



**F**



## **E. Augusta Ladies Excite Shell**

100% polyester double knit. Ladies' fit. V-neck. Double-needle hemmed armholes and bottom.

**Style 9100:** Ladies S, M, L, XL, 2XL.

**Style 9101:** Girls XXS, XS, S, M, L.

**Colors:** Black, Columbia Blue, Dark Green, Gold, Kelly, Maroon, Navy, Orange, Purple, Red, Royal.

## **F. Augusta Ladies Shout Skirt**

100% polyester double knit. Ladies' fit. Covered elastic waistband. Side Vents. Double-needle hemmed bottom.

**Style 9105:** Ladies S, M, L, XL, 2XL.

**Style 9106:** Girls XXS, XS, S, M, L.

**Colors:** Black, Columbia Blue, Dark Green, Gold, Kelly, Maroon, Navy, Orange, Purple, Red, Royal.

**G**



## **G. Augusta Ladies Rally Jersey**

100% polyester wicking knit. Odor resistant. Heat sealed label. Self-fabric V-neck with accent piping. Set-in cap sleeves.

**Style 1204:** Ladies S, M, L, XL, 2XL.

**Style 1205:** Girls S, M, L.

**Colors:** Black/White, Dark Green/White, Gold/White, Kelly/White, Maroon/White, Navy/White, Orange/White, Power Pink/White, Purple/White, Red/White, Royal/White, White/Black.

★ **SEE ALL BAGS ON PAGE 83.**

**H**



## **H. Augusta Reverb Backpack**

210-denier nylon with PU coating. Fully reversible from drawstring bag to tote bag. Drawstring closure top. Zippered front pocket.

**Style 167:** 14"x 18"

**Colors:** Black/Gold, Black/Orange, Dark Green/Black, Gold/Royal, Maroon/Black, Navy/Gold, Purple/Gold, Red/Black, Royal/Black.



## A. Augusta Junior Fit Replica Football Tee

100% polyester tricot mesh with 100% polyester dazzle yoke and sleeves. Junior fit-not intended to be worn with pads. Rib-knit modified V-neck collar. Set-in sleeves and outside locker label. Back of yoke large enough for embellishment. Double-needle hemmed sleeves and bottom.

**Style 250:** Ladies S, M, L, XL, 2XL.

**Style 251:** Girls, S, M, L

**Colors:** Black, Dark Green, Gold, Maroon, Navy, Pink, Purple, Red, Royal, White.



## C. Augusta Stadium Replica Jersey

100% polyester tricot mesh with 100% polyester dazzle fabric yoke and set-in sleeves. 1 x 1 rib-knit modified V-neck collar. Front and back yoke large enough for embellishment. Outside locker label is on wearer's left side near bottom hem. Double-needle hemmed sleeves and bottom. Not meant to be worn with pads.

**Style 257:** Adult XXS, XS, S, M, L, XL, 2XL, 3XL.

**Style 258:** Youth, S, M, L

**Colors:** Black, Dark Green, Gold, Light Pink, Maroon, Navy, Purple, Red, Royal, White.

**B**



## B. Augusta Ladies Wicking Mesh Sleeveless Jersey

100% polyester wicking mesh. Wicks moisture away from the body. Ladies' fit. Heat sealed label. 1 x 1 rib-knit V-neck collar. Double-needle hemmed armholes and bottom.

**Style 525:** Ladies S, M, L, XL, 2XL.

**Style 526:** Girls S, M, L.

**Colors:** Black, Columbia Blue, Gold, Navy, Orange, Pink, Purple, Red, Royal, Silver Grey, White.

**D**



## D. Augusta Ladies Wicking V-Neck Jersey

100% polyester fabric wicks moisture from body. Mitered V-neck with self fabric collar. Raglan sleeves. Ladies' fit. Double-needle stitching at sleeves and curved bottom hem.

**Style 571:** Ladies XS, S, M, L, XL, 2XL.

**Colors:** Black, Columbia Blue, Gold, Navy, Purple, Red, Royal, White.

**E**



## E. Augusta Pep Rally Jersey

100% polyester tricot mesh. 100% polyester dazzle fabric yoke and sleeves. 1 x 1 rib-knit modified V-neck collar. Front and back yoke is large enough for embellishment. Contrast color inserts. Outside locker label is on wearer's left side near bottom hem. Not meant to be worn with pads.

**Style 253:** Adult S, M, L, XL, 2XL, 3XL.

**Style 254:** Youth S, M, L.

**Colors:** Black/Gold, Black/Red, Black/Vegas Gold, Black/White, Columbia Blue/White, Light Pink/White, Navy/Gold, Navy/White, Purple/Gold, Red/Black, Red/White, Royal/Gold, Royal/Red, Royal/White.



## G. Augusta Junior Fit Pep Rally Replica Tee

100% polyester tricot mesh with 100% polyester dazzle fabric yoke and sleeves. Junior fit - not meant to be worn with pads. 1 x 1 rib-knit modified V-neck collar. Front and back yoke large enough for embellishment. Set-in sleeves with contrasting color insert. Outside locker label with size is on wearer's left side near bottom hem.

**Style 252:** Ladies XS, S, M, L, XL, 2XL.

**Colors:** Black/Gold, Black/Red, Black/Vegas Gold, Black/White, Columbia Blue/White, Light Pink/White, Navy/Gold, Navy/White, Purple/Gold, Red/Black, Red/White, Royal/Gold, Royal/Red, Royal/White.

**F**



## F. Augusta Junior Fit Pulse Team Short

Shell is 100% polyester micropoly. Side inserts are 100% polyester mesh. Lining is 100% polyester wicking crepe. Low rise with covered elastic waistband and inside drawcord. Inner brief with leg elastic. Inside key pocket. 4" inseam. Girl's inseam graded.

**Style 1265:** Ladies S, M, L, XL, 2XL.

**Style 1266:** Girls S, M, L.

**Colors:** Black/Black/White, Dark Green/White/Black, Maroon/White/Black, Navy/White/Black, Power Pink/White/Black, Purple/White/Black, Orange/White/Black, Red/White/Black, Royal/White/Black, Black/White/Power Yellow, Purple/White/Power Yellow, Power Yellow/White/Black.

**H**



## H. Augusta Ladies Trim Fit Jersey Short

Heavyweight 50% polyester/50% cotton jersey knit. Elastic waistband. 3" inseam on ladies' sizes. V-notch leg. Double-needle hemmed bottom.

**Style 987:** Ladies XS, S, M, L, XL.

**Style 988:** Girls S, M, L.

**Colors:** Ash, Black, Dark Green, Gold, Heather, Kelly, Light Pink, Maroon, Navy, Orange, Purple, Red, Royal.



BLACK



DARK GREEN

PURPLE

GOLD

RED

MAROON

ROYAL

NAVY

## A. Dyenomite® One-Color Tye Dye T-Shirt

5.3-ounce 100% cotton T-shirt. Double-needle stitching at neckline and sleeves. Shoulder to shoulder taping.

**Style D200CY:** Adult S, M, L, XL, 2XL, 3XL.

**Style D20BCY:** Youth S, M, L.

**Colors:** Black, Dark Green, Gold, Maroon, Navy, Purple, Red, Royal.

## B



## B. Dyenomite® Multi-Color Tye Dye T-Shirt

5.3-ounce 100% cotton T-shirt. Double-needle stitching at neckline and sleeves. Shoulder to shoulder taping.

**Style D200MA:** Adult S, M, L, XL, 2XL, 3XL.

**Style D20BMA:** Youth S, M, L.

**Color:** Rainbow.





## C. Augusta Gameday Crew

100% polyester wicking smooth knit. Odor resistant. Heat sealed label. Self-fabric collar. Set-in sleeves. Double-needle hemmed sleeves and bottom.

**Style 1020:** Adult S, M, L, XL, 2XL, 3XL, 4XL.

**Style 1021:** Youth S, M, L.

**Colors:** Black/Vegas Gold, Black/White, Dark Green/Vegas Gold, Dark Green/White, Maroon/Vegas Gold, Maroon/White, Navy/Orange, Navy/Vegas Gold, Navy/White, Orange/White, Purple/White, Red/Black, Red/White, Royal/Black, Royal/Orange, Royal/White, Vegas Gold/White, White/Black, White/Navy, White/Red, White/Royal.

## D. Augusta Ladies Sleeveless Wicking Textured Gameday Sport Shirt

100% polyester wicking closed-hole mesh with 94% Polyester/6% Spandex inserts. Wicks moisture away from the body. Ladies fit. Heat sealed label. Self-fabric V-neck collar. Contrast color shoulder and side inserts stretch for enhanced performance. Self-fabric armholes, side vents and double-needle hemmed bottom.

**Style 5059:** Ladies XS, S, M, L, XL, 2XL.

**Colors:** Black/White, Dark Green/White, Maroon/White, Navy/White, Purple/White, Red/White, Royal/White, White/White.

## E. Augusta Wicking Textured Gameday Sport Shirt

100% polyester wicking closed-hole mesh with 94% Polyester/6% Spandex inserts. Wicks moisture away from the body. Heat sealed label and self-fabric collar. Contrast color shoulder and side inserts stretch for enhanced performance. Box-stitched placket with three matching buttons with cross-stitching. Double-needle hemmed sleeves and bottom.

**Style 5055:** Adult S, M, L, XL, 2XL, 3XL, 4XL.

**Colors:** Black/Vegas Gold, Black/White, Dark Green/Vegas Gold, Dark Green/White, Maroon/Vegas Gold, Maroon/White, Navy/Orange, Navy/Vegas Gold, Navy/White, Orange/White, Purple/White, Red/Black, Red/White, Royal/Black, Royal/Orange, Royal/White, Vegas Gold/White, White/Black, White/Navy, White/Royal.

**F**



## F. Augusta Wicking Textured Raglan Sleeve Sport Shirt

Heavyweight 5.3-ounce 100% polyester closed hole mesh wicks moisture away from body for quick evaporation. Self-fabric collar. Box stitched placket. Raglan sleeves. Contrast color sleeve and side inserts. Two-needle stitching at sleeve and bottom hem.

**Style 5090:** Adult S, M, L, XL, 2XL, 3XL.

**Colors:** Black/White, Dark Green/White, Navy/White, Red/White, Royal/White, White/Black, White/Dark Green, White/Maroon, White/Navy, White/Orange, White/Purple, White/Red, White/Royal.



**AUGUSTA**  
SPORTSWEAR

## A. Augusta Adult Wicking Mesh Sport Shirt

100% polyester wicking closed hole mesh. Matching rib-knit collar.

**Style 5095:** Adult S, M, L, XL, 2XL, 3XL.

**Colors:** Black, Dark Green, Graphite, Kelly, Maroon, Navy, Orange, Purple, Red, Royal, Vegas Gold, White.

## B. Augusta Wicking Textured Color Block Sport Shirt

100% polyester wicking closed hole mesh. Heat sealed label. Self-fabric collar. Contrast color shoulder inserts with smooth texture. Raglan sleeves.

**Style 5086:** Adult S, M, L, XL, 2XL, 3XL, 4XL, 5XL.

**Colors:** Black/Gold, Black/Orange, Black/Red, Black/White, Dark Green/White, Kelly/White, Maroon/White, Navy/Gold, Navy/White, Orange/White, Purple/White, Red/White, Royal/Red, Royal/White, White/Black, White/Gold, White/Navy, White/Red, White/Royal.

## C. Augusta Wicking Mesh Tri-Color Jersey

100% polyester wicking mesh. Rib-knit collar with heat sealed label. Contrast color sleeve inserts. Raglan sleeves. Double-needle hemmed sleeves and bottom.

**Style 875:** Adult S, M, L, XL, 2XL, 3XL.

**Style 876:** Youth S, M, L.

**Colors:** Black/White/Silver, Columbia Blue/White/Silver, Dark Green/White/Silver, Gold/White/Silver, Maroon/White/Silver, Navy/White/Silver, Orange/White/Silver, Purple/White/Silver, Red/White/Silver, Royal/White/Silver, Silver/White/Black, White/Silver/Black.

**B**



**C**





## D. Augusta Ladies Jersey

100% polyester wicking smooth knit. Odor resistant. Ladies fit. Self-fabric V-neck collar.

**Style 1015:** Ladies S, M, L, XL, 2XL.

**Style 1016:** Girls S, M, L.

**Colors:** Black, Dark Green, Gold, Maroon, Navy, Orange, Power Pink, Purple, Red, Royal, Silver Grey, White.



## F. Augusta Wicking T-Shirt

100% polyester wicking smooth knit. Odor resistant. Self-fabric collar.

**Style 1010:** Adult S, M, L, XL, 2XL, 3XL.

**Style 1011:** Youth S, M, L.

**Colors:** Black, Columbia Blue, Dark Green, Gold, Maroon, Navy, Orange, Power Pink, Purple, Red, Royal, Silver Grey, White.

## E



## E. Augusta Wicking Long Sleeve T-Shirt

100% polyester wicking knit. Wicks moisture away from the body. Heat sealed label. Self-fabric collar and cuffs. Double-needle coverstitched collar.

**Style 788:** Adult S, M, L, XL, 2XL, 3XL.

**Style 789:** Youth S, M, L.

**Colors:** Black, Dark Green, Gold, Maroon, Navy, Orange, Purple, Red, Royal, Silver Grey, White.

## G



## G. Augusta Performance Wicking T-Shirt

100% polyester fabric wicks moisture away from body. Self-fabric collar with topstitching. Set-in sleeves. Coverstitching at armholes. Double-needle stitching at sleeves and bottom hem.

**Style 790:** Adult S, M, L, XL, 2XL, 3XL.

**Style 791:** Youth M, L.

**Colors:** Black, Columbia Blue, Dark Green, Gold, Maroon, Navy, Orange, Purple, Red, Royal, Silver, White.



## A. JERZEES® Heavyweight Poly/Cotton T-Shirt

Ribbed crew neck. Short set-in sleeves. Shoulder-to-shoulder taping and two-needle hemming. 50% polyester/50% cotton.

**Style 29M:** Adult S, M, L, XL, 2XL, 3XL, 4XL\*.

**Style 29B:** Youth XS\*\*, S, M, L.

**Colors:** Birch, Black, Brown, Burnt Orange, California Blue, Cyber Pink, Forest Green, Gold, Island Yellow, Jade, Kelly, Khaki Brown, Light Blue, Light Pink, Maroon, Natural, Navy, Oxford, Purple, Red, Royal, Safety Green, Vegas Gold, White.

\* 4XL offered in Birch, Black, Navy, Oxford, Red, Royal, White.

\*\* Youth XS offered in White only.



## B. JERZEES® 100% Cotton T-Shirt

100% cotton pre-shrunk t-shirt. Ribbed collar, shoulder-to-shoulder taping and two-needle hemmed sleeves and bottom.

**Style 363M:** Adult S, M, L, XL, 2XL, 3XL\*.

**Colors:** Birch, Black, Forest Green, Khaki Brown, Maroon, Natural, Navy, Purple, Red, Royal, White.

\* Adult size 3XL available only in Birch, Black, White.

CALIFORNIA BLUE	FOREST GREEN	OXFORD
LIGHT BLUE	NAVY	BURNT ORANGE
NATURAL	KHAKI BROWN	ROYAL
CYBER PINK	MAROON	BROWN
JADE	PURPLE	GOLD
RED	KELLY	BLACK
SAFETY GREEN	ISLAND YELLOW	WHITE
LIGHT PINK	VEGAS GOLD	BIRCH

## C



## C. Augusta Heavyweight Hooded Sweatshirt

50% polyester/50% cotton 9-ounce fleece pullover. Self-lined hood (with drawstring on Adult sizes only). Set-in sleeves, double-sided muff pouch pocket, 1 x 1 rib-knit cuffs and bottom band. Coverstitch detailing.

**Style 5200:** Adult S, M, L, XL, 2XL.

**Style 5201:** Youth M, L.

**Colors:** Ash, Black, Dark Green, Gold, Heather, Kelly, Maroon, Navy, Orange, Purple, Red, Royal, White.





## D. Augusta Men's Sleeveless T-Shirt

50% polyester/50% cotton sleeveless T-shirt with two-needle hemmed armholes. Two-needle set on rib crew neck.

**Style 203:** Adult S, M, L, XL, 2XL.

**Style 204:** Youth M, L.

**Colors:** Ash, Black, Dark Green, Gold, Heather, Maroon, Navy, Purple, Red, Royal, White.



MAROON/GOLD

NAVY/GOLD

RED/BLACK



DARK GREEN/GOLD

PURPLE/GOLD

BLACK/GOLD



HEATHER/BLACK

HEATHER/NAVY

HEATHER/DARK GREEN



HEATHER/MAROON

WHITE/KELLY

WHITE/ROYAL



WHITE/BLACK

WHITE/RED

WHITE/NAVY

**E**



## E. Augusta Sleeve Stripe Jersey

50% polyester/50% cotton. V-neck. Set-in sleeves. Contrasting two-stripe trim.

**Style 360:** Adult S, M, L, XL, 2XL.

**Style 361:** Youth S, M, L.

**Colors:** Black/Gold, Black/White, Dark Green/White, Gold/White, Kelly/White, Light Blue/White, Maroon/White, Navy/Gold, Navy/White, Pink/White, Purple/White, Orange/White, Red/Black, Red/White, Royal/White, White/Red.

## F. Augusta Ringer T-Shirt

Crewneck. 1x1 rib-knit contrasting collar and cuffs. Double-needle hemmed bottom. 50% polyester/50% cotton.

**Style 710:** Adult S, M, L, XL, 2XL.

**Colors:** Black/Gold, Dark Green/Gold, Heather/Black, Heather/Dark Green, Heather/Maroon, Heather/Navy, Maroon/Gold, Navy/Gold, Purple/Gold, Red/Black, White/Black, White/Kelly, White/Navy, White/Red, White/Royal.



### A. Augusta Jersey Knit Short

Heavyweight jersey knit. Elastic waistband. 50% polyester/50% cotton. 6" inseam on Adult large.

**Style 990:** Adult S, M, L, XL, 2XL.

**Style 991:** Youth S, M, L.

**Colors:** Ash, Black, Heather, Navy, Red, Royal.



### C. Augusta Micromesh Short

Two-ply short. Outer layer is 100% nylon micromesh, lined with 100% nylon tricot. Inside drawstring. 7" inseam on Adult sizes.

**Style 744:** Adult S, M, L, XL, 2XL.

**Style 746:** Youth M, L.

**Colors:** Black, Dark Green, Gold, Navy, Red, Royal.

**Additional Adult colors:** Maroon, Purple.



### E. Augusta Training Short

100% polyester wicking knit. Full-cut. Heat sealed label. Covered elastic waistband with inside drawcord. 9" inseam. Double-needle hemmed bottom.

**Style 1420:** Adult S, M, L, XL, 2XL, 3XL.

**Style 1421:** Youth S, M, L.

**Colors:** Black, Dark Green, Maroon, Navy, Red, Royal, Silver Grey.



### B. Augusta Wicking Mesh Athletic Short

100% polyester wicking mesh. Wicks moisture away from the body. Full-cut. Covered elastic waistband with inside drawcord. 7" inseam. Double-needle hemmed bottom.

**Style 805:** Adult S, M, L, XL, 2XL, 3XL.

**Style 806:** Youth S, M, L.

**Colors:** Black, Dark Green, Maroon, Navy, Red, Royal, Silver Grey.



### D. Augusta Mini Mesh League Short

Two layers of 100% polyester mini mesh fabric, elastic waistband with inside drawcord. 7" inseam on Adult sizes, double-needle hemmed bottom.

**Style 733:** Adult S, M, L, XL, 2XL, 3XL.

**Style 734:** Youth S, M, L.

**Colors:** Black, Columbia Blue, Dark Green, Gold, Kelly, Maroon, Navy, Orange, Purple, Red, Royal, Vegas Gold.



### F. Augusta Long Tricot Mesh Short/Tricot Lined

Outer layer of 100% polyester tricot mesh. Inner layer of 100% polyester tricot lining. Full-cut. Elastic waistband with inside drawcord. 9" inseam. Double-needle hemmed bottom.

**Style 848:** Adult S, M, L, XL, 2XL, 3XL.

**Colors:** Black, Dark Green, Maroon, Navy, Red, Royal.



◀ **PRO CUT**  
9-INCH  
INSEAM



## G. Augusta Longer Length Wicking Mesh Athletic Short

100% polyester wicking mesh. Wicks moisture away from the body. Full-cut. Covered elastic waistband with inside drawcord. 9" inseam. Double-needle hemmed bottom.

**Style 802:** Adult S, M, L, XL, 2XL, 3XL.

**Colors:** Black, Dark Green, Maroon, Navy, Red, Royal, Silver Grey.



3-INCH  
INSEAM

## I. Augusta Ladies Trim Fit Jersey Short

Heavyweight 50% polyester/50% cotton jersey knit. Elastic waistband. 3" inseam on ladies' sizes. V-notch leg. Double-needle hemmed bottom.

**Style 987:** Ladies XS, S, M, L, XL.

**Style 988:** Girls S, M, L.

**Colors:** Ash, Black, Dark Green, Gold, Heather, Kelly, Light Pink, Maroon, Navy, Orange, Purple, Red, Royal.



5-INCH  
INSEAM

## K. Augusta Ladies Wicking Mesh Short

100% polyester wicking mesh. Wicks moisture away from the body. Ladies' fit. Covered elastic waistband with inside drawcord. 5" inseam. Double-needle hemmed bottom.

**Style 960:** Ladies S, M, L, XL, 2XL.

**Style 961:** Girls S, M, L.

**Colors:** Black, Columbia Blue, Gold, Navy, Orange, Pink, Purple, Red, Royal, Silver Grey, White.



9-INCH  
INSEAM

## H. Augusta Longer Length Micromesh Short

Two-ply micromesh short. Outer layer is 100% nylon micromesh, lined with 100% nylon tricot. Inside drawstring. 9" inseam on Adult sizes.

**Style 754:** Adult S, M, L, XL, 2XL.

**Colors:** Black, Dark Green, Gold, Navy, Red, Royal.



4-INCH  
INSEAM



## J. Augusta Junior Fit Pulse Team Short

Shell is 100% polyester micropoly. Side inserts are 100% polyester mesh. Lining is 100% polyester wicking crepe. Low rise with covered elastic waistband and inside drawcord. Inner brief with leg elastic. Inside key pocket. 4" inseam. Girl's inseam graded.

**Style 1265:** Ladies S, M, L, XL, 2XL.

**Style 1266:** Girls S, M, L.

**Colors:** Black/Black/White, Dark Green/White/Black, Maroon/White/Black, Navy/White/Black, Power Pink/White/Black, Purple/White/Black, Orange/White/Black, Red/White/Black, Royal/White/Black, Black/White/Power Yellow, Purple/White/Power Yellow, Power Yellow/White/Black.



5-INCH  
INSEAM

## L. Augusta Ladies Tricot Mesh Short/Tricot Lined

Outer layer of 100% polyester tricot mesh. Inner layer of 100% polyester tricot lining. Ladies' fit. Covered elastic waistband with inside drawcord. 5" inseam. Double-needle hemmed bottom.

**Style 858:** Ladies S, M, L, XL, 2XL.

**Colors:** Black, Dark Green, Gold, Navy, Red, Royal.



INNER CUFF



ZIP VENT



DOUBLE COLLAR

## A. Majestic® Therma Base™ Triple Peak Premier Jacket

100% polyester dobby. Lightweight Therma Base™ insulation. Microfleece fabrics provide softer feel on collar and cuffs. Breathable fabric. Water and wind resistant.

**Style MIJ10:** Adult S, M, L, XL, 2XL.

**Colors:** Black, Navy, Red, Royal.



## C. Majestic® Therma Base™ Pro Style Trainer

100% Therma Base™ solid and circular brushed fleece. Neck insert for decoration. Pro length, hemmed shirt tail.

**Style M6687:** Adult XS, S, M, L, XL, 2XL.

**Colors:** Black, Navy, Red, Royal.

★ SEE PANTS ON PAGE 68.

B



## B. Augusta Micro Poly Pullover Jacket

Outer shell of 100% micro polyester. Body lined with polyester mesh. 1 x 1 rib-knit collar. Elastic cuffs. Vented back with hook and loop fastener. Reinforced slash front pockets. Drop tail open bottom with elastic drawcord and cordlock. Water resistant.

**Style 3460:** Adult S, M, L, XL, 2XL.

**Style 3461:** Youth M, L.

**Colors:** Black/White, Columbia Blue/White, Dark Green/White, Maroon/White, Navy/White, Purple/White, Red/White, Royal/White.

D



## D. Augusta Micro Poly Windshirt

Outer shell of 100% micro polyester. Body lined with 100% polyester mesh. Sleeves lined with 100% polyester taffeta. Striped 1 x 1 rib-knit V-neck collar. Contrasting color shoulder insert. Slash front pockets. Elastic cuffs and bottom band. Water-resistant.

**Style 3440:** Adult S, M, L, XL, 2XL, 3XL.

**Style 3441:** Youth: S, M, L.

**Colors:** Black/White, Navy/White, Dark Green/Black/White, Maroon/Black/White, Red/Black/White, Royal/Black/White, Black/Gold/White, Purple/Gold/White, Navy/Red/White.

**Color Key:** ★ First Color Listed ★ Second Color Listed ★ Third Color Listed.



**E**



MESH INSERT

**E. Mizuno® G2 Batting Jersey**

100% polyester shell with 60% cotton/40% polyester yoke. High density for wind resistance. Mizuno Runbird logo on back of neck and sleeve. 7" zipper and half mesh back.

**Style Z50225:** Adult S, M, L, XL, 2XL, 3XL.

**Style Z50226:** Youth M, L, XL.

**Colors:** Black, Navy, Red, Royal.

*While Supplies Last.*



**G. Mizuno® Prestige Long Sleeve G2 Batting Jersey**

100% polyester Microfiber shell with 100% cotton lining. Drawstring waist with adjustable toggle for fit. Two on seam side pockets.

**Style Z50223:** Adult S, M, L, XL, 2XL.

**Style Z50224:** Youth M, L, XL.

**Colors:** Black, Navy, Red, Royal.

*While Supplies Last.*

**F**



**F. Mizuno® Premier Short Sleeve G3 Batting Jersey**

100% polyester shell with 60% cotton/40% polyester yoke. Wind resistant. Mizuno Runbird logo on back and sleeve. 7" zipper and half mesh back.

**Style Z50284:** Adult S, M, L, XL, 2XL, 3XL.

**Style Z50285:** Youth M, L, XL.

**Colors:** Black, Navy, Red, Royal.

**H**



**H. Mizuno® Prestige Long Sleeve G3 Batting Jersey**

100% polyester shell with 100% cotton lining. Drawstring elastic waist with adjustable toggle for fit. Two on seam side pockets.

**Style Z50282:** Adult S, M, L, XL, 2XL.

**Style Z50283:** Youth M, L, XL.

**Colors:** Black, Navy, Red, Royal.



## A. Augusta Coach's Jacket

Outer shell is 100% nylon taffeta. Lining is brushed tricot. Matching snap front closure. Elastic cuffs. Front slash pockets and matching drawstring in hem. Machine-washable and water-resistant. Youth jacket does not have drawstring.

**Style 3100:** Adult S, M, L, XL, 2XL, 3XL.

**Colors:** Black, Dark Green, Gold, Maroon, Navy, Purple, Red, Royal.

**Style 3101:** Youth M, L.

**Colors:** Black, Dark Green, Maroon, Navy, Red, Royal.



## C. Augusta Micro Poly Full-Zip Jacket

Outer shell of micro polyester. Fully lined with polyester mesh. White piping on collar and armholes. White panel down side. Elastic cuffs and bottom band. Reinforced slash front pockets. Water resistant.

**Style 3450:** Adult S, M, L, XL, 2XL.

**Style 3451:** Youth S, M, L.

**Colors:** Black/White, Columbia Blue/White, Dark Green/White, Maroon/White, Navy/White, Purple/White, Red/White, Royal/White.

## D. Augusta Micro Poly Pant/Lined

Outer shell of micro polyester, upper leg lined with polyester mesh, lower leg lined with nylon taffeta, covered elastic waistband with inside drawstring, white piping along side seams. Side seam pockets, zipper with gusset on lower leg, tab at pant bottom with snaps for adjustability. Water resistant.

**Style 620:** Adult S, M, L, XL, 2XL.

**Style 621:** Youth S, M, L.

**Colors:** Black/White, Columbia Blue/White, Dark Green/White, Maroon/White, Navy/White, Purple/White, Red/White, Royal/White.



## B. Augusta Competition Pullover

100% pill-free polyester micro fleece with windstopper. Self-fabric crew neck with home plate patch. Spandex binding at cuffs. Raglan sleeves with contrasting inserts.

**Style 3835:** Adult XS, S, M, L, XL, 2XL, 3XL.

**Colors:** Black/Graphite, Dark Green/Black, Maroon/Black, Navy/Graphite, Red/Black, Royal/Black.



## E. OC Sports® Two-Color Wicking Visor

Polyester moisture wicking fabric. 2¼" crown. Curved bill. Hook and loop closure.

**Style DKV150:** Adult.

**Colors:** White/Black, White/Dark Green, White/Maroon, White/Navy, White/Pink, White/Red, White/Royal.

## H. Augusta Athletic Mesh and Dazzle Stripe Visor

100% polyester athletic mesh with tricot backing. 100% polyester dazzle fabric. Contrasting colors on front and side panels with white dazzle stripe and bill edge. Sweatband folds down for easy embellishment. Pre-curved bill. Hook and loop fastener.

**Style 6243:** Adult.

**Style 6244:** Youth.

**Colors:** Dark Green/Black/White, Gold/Black/White, Maroon/Black/White, Orange/Black/White, Pink/Black/White, Purple/Black/White, Red/Black/White, Royal/Black/White, Royal/Red/White.

## K. Augusta Athletic Mesh Two-Color Visor

100% polyester athletic mesh. Bill is tipped with contrasting color. Sweatband folds down for easy embellishing. Curved bill. Hook and loop fastener.

**Style 6223:** Adult.

**Style 6224:** Youth.

**Colors:** Black/Gold, Black/White, Columbia Blue/Navy, Dark Green/Gold, Dark Green/White, Maroon/White, Navy/Red, Navy/White, Purple/Gold, Purple/White, Red/Black, Red/White, Royal/Red, Royal/White.

**F**



## F. Augusta Athletic Mesh Visor

100% polyester athletic mesh with tricot backing. Three panels. Curved bill. Hook and loop fastener. Sweatband folds down for easy embellishing.

**Style 6227:** Adult.

**Style 6228:** Youth.

**Colors:** Black, Dark Green, Gold, Maroon, Navy, Purple, Red, Royal, White.

**I**



## I. Augusta Adjustable Wicking Mesh Two-Color Visor

100% polyester textured wicking mesh fabric. Wicks moisture away from the body. Three panel construction with sweatband that folds down for easy embellishment. Curved bill. Hook and loop fastener.

**Style 6260:** Adult.

**Style 6261:** Youth.

**Colors:** Black/White, Dark Green/White, Gold/White, Maroon/White, Navy/White, Orange/White, Purple/White, Red/White, Royal/White, White/Black.

**L**



## L. Augusta Adjustable Wicking Mesh Visor

100% polyester textured wicking mesh fabric. Wicks moisture away from the body. Three panel construction with sweatband that folds down for easy embellishment. Curved bill. Hook and loop fastener.

**Style 6267:** Adult.

**Style 6268:** Youth.

**Colors:** Black, Dark Green, Gold, Kelly, Maroon, Navy, Orange, Purple, Red, Royal, White.

**G**



## G. Augusta Dazzle Visor

100% polyester dazzle, three panels, sweatband which folds down for easy embellishing, curved bill. Hook and loop fastener.

**Style 6238:** Adult.

**Style 6239:** Youth.

**Colors:** Black, Dark Green, Gold, Maroon, Navy, Purple, Red, Royal, White.

**J**



## J. Augusta Color Block Athletic Mesh Visor

100% polyester athletic mesh with tricot backing. Three panels. Contrasting color bill edge and back. Sweatband folds down for easy embellishment. Curved bill. Hook and loop fastener.

**Style 6248:** Adult.

**Style 6249:** Youth.

**Colors:** White/Black, White/Dark Green, White/Gold, White/Maroon, White/Navy, White/Orange, White/Purple, White/Red, White/Royal.

**M**



## M. Augusta Sport Twill Visor

100% cotton twill washed for softness, three panels, self-fabric sweat band folds down for easy embellishing, curved bill, adjustable self-fabric straps with hook and loop fastener.

**Style 6225:** Adult.

**Style 6226:** Youth.

**Colors:** Black, Dark Green, Gold, Kelly, Maroon, Navy, Orange, Purple, Red, Royal, White.



## A. OC Sports® Premium Mesh Cap

Polyester/spandex six panel front with stretchable sandwich mesh back. Q3 moisture management technology. Curved bill. Players ID tag.

**Style MVP183:** Adult M/L 7"-7 7/8", L/XL 7 1/4"-7 7/8".

**Colors:** Black/White, Dark Green/White, Maroon/White, Navy/White, Red/White, Royal/White.

*\* While Supplies Last.*

**B**



## B. Augusta Adjustable Wicking Mesh Cap

100% polyester textured wicking fabric. Wicks moisture away from the body. Low profile six panel construction. Fused buckram-backed front panel. Curved bill. Hook and loop fastener.

**Style 6265:** Adult.

**Style 6266:** Youth.

**Colors:** Black, Dark Green, Gold, Kelly, Maroon, Navy, Orange, Purple, Red, Royal, White.

**C**



## C. Augusta Wicking Mesh Edge Cap

100% polyester textured wicking fabric. Wicks moisture away from the body. Low profile six panel construction. Fused buckram-backed front panel. Contrast color dazzle inserts. Curved bill. Hook and loop fastener.

**Style 6270:** Adult.

**Style 6271:** Youth.

**Colors:** Black/White, Dark Green/White, Gold/White, Maroon/White, Navy/White, Orange/White, Purple/White, Red/White, Royal/White, White/Black.

**D**



## D. Augusta Color Block Athletic Mesh Cap

100% polyester athletic mesh with tricot backing. Six panels. Low profile pro-style crown. Fused buckram-backed front panels. Contrasting color billedge and back. Matching sewn eyelets. Pre-curved bill. Hook and loop fastener.

**Style 6245:** Adult.

**Style 6246:** Youth.

**Colors:** Black/White, Dark Green/White, Gold/White, Maroon/White, Navy/White, Orange/White, Purple/White, Red/White, Royal/White.



## E. Augusta Sport Flex Athletic Mesh Cap

100% polyester athletic mesh with tricot backing. SportFlex design allows cap to stretch for a custom fit. Six panels. Low profile pro-style crown. Curved visor. Fused buckram backing and matching color sewn eyelets with grey undervisor.

**Style 6232:** Adult S/M (fits adult hat sizes 6 3/4" to 7 1/8").

Adult L/XL (fits adult hat sizes 7 1/4" to 7 7/8").

**Style 6233:** Youth M/L (fits youth hat sizes 6 1/2" to 6 7/8").

**Colors:** Black, Dark Green, Gold, Maroon, Navy, Orange, Purple, Red, Royal, White.

**F**



## F. Augusta Sport Flex Three-Color Athletic Mesh Cap

100% polyester athletic mesh with tricot backing. Unique design allows cap to stretch for a comfortable fit. Six panels with low profile crown. Fused buckram-backed front panel. Matching sewn eyelets. Curved bill with grey undervisor.

**Style 6247:** Adult S/M (fits adult hat sizes 6 3/4" to 7 1/8").

Adult L/XL (fits adult hat sizes 7 1/4" to 7 7/8").

**Colors:** Dark Green/Black/White, Gold/Black/White, Maroon/Black/White, Orange/Black/White, Purple/Black/White, Red/Black/White, Red/Navy/White, Royal/Black/White.

**G**



## G. Augusta Athletic Mesh Cap

100% polyester athletic mesh with tricot backing. Six panels with low profile pro-style crown. Fused buckram-backed front panels. Curved bill. Hook and loop fastener.

**Style 6235:** Adult.

**Style 6236:** Youth.

**Solid Colors:** Black, Columbia Blue, Dark Green, Gold, Maroon, Navy, Orange, Purple, Red, Royal, Silver Grey, Vegas Gold, White.

**Two-Tone Colors:** Black/Gold, Black/Orange, Black/Red, Dark Green/Gold, Navy/Red, Purple/Gold, Red/Black, Royal/Red, Silver Grey/Black, Silver Grey/Navy.





## H. OC Sports® Mesh Six Panel Cap

Six panel mid-profile jersey mesh with pre-curved visor. Grey undervisor and adjustable closure.

**Style JM120:** Adult.

**Solid Colors:** Black, Navy, Red, Royal.

**Two-Tone Colors:** Black/Red, Navy/Red, Silver Grey/Black, White/Navy.

**I**



## I. Augusta Sport Flex Color Block Athletic Mesh Cap

100% polyester athletic mesh with tricot backing. Unique design allows cap to stretch for a comfortable fit. Six panels with low profile crown. Fused buckram-backed front panel. Contrasting color side insert and bill edge. Matching sewn eyelets. Curved bill with grey undervisor.

**Style 6234:** Adult S/M (fits adult hat sizes 6¾" to 7¼").

Adult L/XL (fits adult hat sizes 7¼" to 7¾").

**Colors:** Black/White, Columbia Blue/White, Dark Green/White, Gold/White, Maroon/White, Navy/White, Orange/White, Purple/White, Red/White, Royal/White.

**J**



## J. OC Sports® Five Panel Pro Cap

Five panel twill pro-style cap with matching undervisor and adjustable snap tab back. Solid colors and two-tones available.

**Style GL455:** Adult.

**Solid Colors:** Black, Dark Green, Maroon, Navy, Red, Royal, White.

**Two-Tone Colors:** Black/Red, Dark Green/Gold, Navy/Red, Royal/Red, Teal/Black, White/Red, White/Royal.

**Style GL455Y:** Youth.

**Solid Colors:** Black, Dark Green, Maroon, Navy, Red, Royal.

**Two-Tone Colors:** Black/Red, Dark Green/Gold, Navy/Red, Royal/Red, Teal/Black.

## K. Augusta Sport Flex Brushed Twill Six Panel Cap

98% cotton/2% spandex twill. Unique design and fabric allows cap to stretch for a custom fit. Six panels. Low profile pro-style crown. Curved bill. Fused buckram backing and matching color sewn eyelets.

**Style 6230:** Adult S/M (fits adult hat sizes 6¾" to 7¼").

Adult L/XL (fits adult hat sizes 7¼" to 7¾").

**Style 6231:** Youth M/L (fits youth hat sizes 6½" to 6¾").

**Colors:** Black, Dark Green, Gold, Kelly, Maroon, Navy, Orange, Purple, Red, Royal, White.



**L**

## L. Augusta Six Panel Cotton Twill Low Profile Cap

100% cotton twill. Fused buckram backed front panels. Color match sewn eyelets. Curved bill and plastic snap size adjuster.

**Style 6204:** Adult.

**Style 6206:** Youth.

**Colors:** Black, Dark Green, Gold, Kelly, Maroon, Navy, Orange, Purple, Red, Royal, Teal, White.



**M**



## M. OC Sports® Six Panel Blank Team Cap

Six panel structured mid-profile cotton twill cap with **Team MLB** left temple logo. Grey undervisor. Velcro closure.

**Style MLB801:** Adult.

**Colors:** Black/Gold, Black/Orange, Black/Red, Dark Green/Gold, Navy/Gold, Navy/Red, Red/Black, Royal/Red, White/Black, White/Dark Green, White/Maroon, White/Navy, White/Red, White/Royal.



**N**



## N. OC Sports® Five Panel Blank Team Cap

Five panel structured mid-profile cotton twill cap with **Team MLB** left temple logo. Grey undervisor. Plastic snap closure.

**Style MLB802:** Adult.

**Colors:** Black, Dark Green, Gold, Kelly, Maroon, Navy, Orange, Purple, Red, Royal.



## ★ TRADITIONAL LEATHER FOOTBALLS



### W1205 Official

Wilson® TDS Leather NFHS approved Official size football.



### W1300 Youth

Wilson® TDY Leather Youth size football for 12-14 year olds.



### W1360 Junior

Wilson® TDJ Leather Junior size football for 9-12 year olds.



### W1382 Pee wee

Wilson® K2 Leather Pee wee size football for 6-9 year olds.

## ★ COMPOSITE LEATHER FOOTBALLS



### W1715 Official

Wilson® TDS Composite NFHS approved Official size football.



### W1714 Youth

Wilson® TDY Composite Youth size football for 12-14 year olds.



### W1713 Junior

Wilson® TDJ Composite Junior size football for 9-12 year olds.



### W1712 Pee wee

Wilson® K2 Composite Pee wee size football for 6-9 year olds.

## ★ BASKETBALLS



### Wilson® Evolution Basketball

NCAA & NFHS approved. Composite cover.

Style W0516: Official size

Style W0586: Intermediate/28.5 size



### Wilson® NCAA Replica Basketball

NCAA Replica, Indoor/outdoor composite leather cover.

Style W0730: Official size

Style W0731: Intermediate/28.5 size



### Wilson® Home Court Basketball

Dual rubber cover

Style W4065: Official size

Style W4066: Intermediate/28.5 size

## ★ VOLLEYBALLS



### W4900 Reaction

Wilson® Reaction Official size Volleyball.



### W4910 Reaction Light

Wilson® Reaction Light Official size Volleyball. 8 ounce weight-Official size for beginning players.

## ★ SOCCER BALLS



### W9100 Velocita

Wilson® Velocita Size 5 Soccer Ball. NCAA & NFHS approved.



### Wilson® Aggressor Soccer Ball

Style W8365: Size 5 | Style W8364: Size 4

Style W8363: Size 3



## ★ BASEBALLS



**Style RCAL-1**  
Rawlings® Raised Seam  
Cal Ripkin Baseball



**Style ROTB-5**  
Rawlings® Level 5  
Training Baseball



**Style RDZY-1**  
Rawlings® Raised Seam Dizzy  
Dean Baseball



**Style RUSSA-1**  
Rawlings®  
Raised Seam USSSA Baseball



**Style ROLB-1**  
Rawlings® Raised Seam  
Official League Baseball



**Style ROLB-1X**  
Rawlings® Cosmetic Blemished  
Practice Baseball



**Style RSLL-1**  
Rawlings® Raised Seam  
Senior Little League Baseball



**Style RLLB-1**  
Rawlings® Raised Seam  
Little League Baseball



**Style RPLB-1**  
Rawlings® Raised Seam Pony League Baseball



**Style RBRO-1**  
Rawlings® Raised Seam  
Babe Ruth Baseball



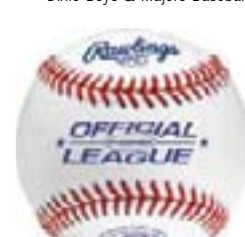
**Style R100HSNF**  
Rawlings® NF  
High School Baseball



**Style R0YB-1**  
Rawlings® Raised Seam  
Dixie Youth Baseball



**Style TVB**  
Rawlings® Official  
T-Ball Training Baseball



**Style RDBM**  
Rawlings® Raised Seam  
Dixie Boys & Majors Baseball



**Style R100HX**  
Rawlings®  
Cosmetic Blemished  
High School Baseball



## ★ SOFTBALLS



**Style A11Y47**  
Rawlings® ASA Yellow  
11" Softball  
47 Maximum Core



**Style A12Y47**  
Rawlings® ASA Yellow  
12" Softball  
47 Maximum Core



## ★ BASEBALLS



**Style W1030**

Wilson®

High School Practice and Youth League Game Baseball.



**Style W1010**

Wilson®

High School Baseball.



**Style W1060**

Wilson®

Youth League Baseball.



**Style W1074**

Wilson®

Little League Baseball.



**Style W1203**

Wilson®

Cloth Cover Indoor Practice Baseball  
*While Supplies Last.*

## ★ SOFTBALLS



**Style W9011**

Wilson®

12" NFHS Softball.



**Style W9074**

Wilson®

12" Little League Softball.



**Style W9274**

Wilson®

11" Little League Softball.



### A. Wilson® EZ Gear Youth Catchers Equipment Kit

Kit contains catcher helmet/mask, chest protector and leg guards.

**Style W3683:** S/M for ages 5-7, L/XL for ages 7-12.

**Colors:** Black.



## B



### B. Wilson® WSP 2000 Shin Guard

Lightweight soccer shin guard with reinforced shell and perforated foam backing.

**Style W5200:** Adult 8", Youth 7", Pee wee 6"

## C



### C. Wilson® A600 32½" Youth Catchers Mitt

Full grain leather shell. Dual Welting™ for superior fit. Velcro® closure system.

**Style W0600:** Youth.



**D**



**D. Mizuno® MVP Batter's Helmet**

Matte 2-tone finish on ABS plastic shell. DryLite™ padding with strategically placed ventilation holes. Has predrilled holes for mask, sold separately. NOCSAE approved.

**Style Z80158:** Adult OSFA (6 7/8" - 7 1/2").

**Colors:** Black, Navy, Red, Royal.

**E**



**E. Mizuno® Prospect Youth Batting Helmet**

Matte 2-tone finish on ABS plastic shell. DryLite™ padding with strategically placed ventilation holes. Has predrilled holes for mask, sold separately. NOCSAE approved.

**Style Z80169:** Youth OSFA (6 1/2" - 6 3/4").

**Colors:** Black, Navy, Red, Royal.

**F**



**F. Mizuno® Batters Face Mask**

NOCSAE approved when used with Mizuno Helmets. Includes chin strap.

**Style Z80139:** Fits MVP Helmet.

**Style Z80140:** Fits Prospect Helmet.

**Colors:** Black.



**G. Mizuno® Samurai™ Catchers Helmet**

DryLite™ moisture management liner. Ventilation for comfort. Steel framed mask. NOCSAE approved.

**Style Z80191:** 7 1/4" - 7 5/8".

**Colors:** Black, Navy, Red, Royal.

**H**



**H. Mizuno® Samurai™ Chest Protector**

DryLite™ moisture management liner. Removable neck pad for personalization. Low rebound technology. Three layer padding for protection and comfort. Patented detachable wings for customized protection and fit. Nylon Gear bag included.

**Style Z80197:** 15".

**Colors:** Black, Navy, Red, Royal.

★ - DETACHABLE

PNP - PERSONALIZED NAME PLATE

**I**

**I. Mizuno® Samurai™ Shin Guards**

Flexible, protective triple knee cup. Detachable/moveable toe cap. Nylon Gear bag included.

**Style Z80198:** 15".

**Colors:** Black, Navy, Red, Royal.





**A**



**A. Rawlings® 12" Chest Protector**

12" body length with tail. Quick Fit™ attachment for easy on and off.

**Style R6P1:** Ages 5-7.

**Color:** Black.



**B. Rawlings® 14" Chest Protector**

14" body length with tail. Polyester satin front.

**Style R11P:** Ages 5-9.

**Color:** Black.



**C. Rawlings® Intermediate Chest Protector**

Dual density foam for protection with polyethylene sternum insert imbedded in foam. Adjustable back harness.

**Style RLLBP1:** Ages 12-15.

**D**



**D. Rawlings® 10" Leg Guards**

10" length, knee to ankle. Recommended for T-ball.

**Style R6C:** Ages 5-7.

**Color:** Black.

**E**



**E. Rawlings® 12" Leg Guards**

12" length, knee to ankle. Recommended for T-Ball.

**Style R9C:** Ages 5-9.

**Color:** Black.

**F**



**F. Rawlings® 15½" Leg Guards**

15½" length, knee to ankle, extra padding in knee, vented shin and padding.

**Style R16DCW:** Ages 12-16.

**Color:** Black.

**G**



**G. Rawlings® Youth Knee Reliever**

Provides cushion and support to knee. Attaches to any leg guard.

**Style RKRY:** Youth.

**Color:** Black.



ADULT

## H. Rawlings® Coolflo® Catcher's Mask

Hockey style mask meets NOCSAE standards.

Style AF1: Adult.

Style AF3: Youth.

Color: Black.



YOUTH

## I. Rawlings® All in One Catcher's Helmet

Helmet/Mask combo for youth baseball and fast pitch softball. Meets NOCSAE standards.

Style AI1: One size fits all.

Color: Black.



## J. Rawlings® Two-Tone Coolflo® Helmet

Two-tone Coolflo™ helmet featuring metallic highlight fade paint job. Moisture wicking and anti-bacterial padding. Meets NOCSAE standards. Pre-drilled for RWG.

Style RCFHL: One size fits all.

Colors: Dark Green, Gold, Maroon, Navy, Pink, Red, Royal, Silver Grey with Black, White with Dark Green, Navy, Red and Royal.



## K. Rawlings® CoolFlo® Helmet

15 vents. Meets NOCSAE standards. Pre-drilled for RWG. T-ball helmets pre-drilled for ABCRWG.

Style RCFBH: One size fits all. (6½" - 7½")

Colors: Black, Dark Green, Maroon, Navy, Purple, Red, Royal.

Style RCF-TB: T-Ball sized helmet. (6¼" - 6⅝")

Colors: Black, Navy, Pink.



## L. Rawlings® Base Coach Helmet

ABS shell with clear coat. Cloth covered open cell padding.

Style RCBCH: Adult M (7" - 7⅞"), L (7¼" - 7⅝"), XL (7½" - 7⅞"), 2XL (7¾").

Color: Black.



## M. Rawlings® Little League Catcher's Mitt

With a Joe Mauer signature. 33½" circumference.

Style RCM30.



## N. Rawlings® Face Guard

Vinyl coated solid steel wire with mounting hardware. Meets NOCSAE standards. Chin strap included.

Style RWG: One size fits all.

Style ABCRWG: Fits T-Ball helmet.

Color: Black.



A

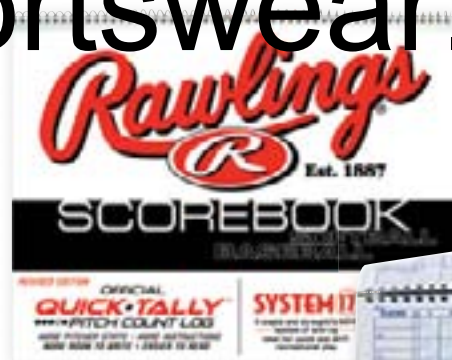


#### A. Rawlings® Deluxe Scorebook

Larger size. 17 players.

Style R17SB: 11" x 14".

# CT Sportswear.com



#### D. Rawlings® Baseball and Softball Scorebook

Baseball and Softball scorebook. 24 games.

Style 7SB.



B



#### B. Rawlings® UBBD Umpire Accessory Kit

Consists of umpire bag, umpire brush, pitch indicator and Rawlings pen.

Style RUBBD.

C



#### C. Rawlings® Line Up Cards

Each pack contains one dozen 4-part carbonless forms for 17 players and 17 substitutes.

Style R17LU: 4" x 7".

E



#### E. Majestic® Cool Base Umpire Polo

100% Polyester Pebble Knit. Cool Base™ technology keeps Umpires cool and comfortable.

Style MIUS1: Adult S, M, L, XL, 2XL.

Colors: Black, Light Blue.

F



#### F. OC Sports® Umpiring Cap

86% polyester/14% wool. Six panel short-billed cap for umpires. Plastic snap closure.

Style UC300S: One size.

Color: Navy.

\* While Supplies Last.





## G. Rawlings® Bomber Team Pack

600-denier rip-stop fabric. Side bat sleeves. Bottom button straps. Ventilated shoe pocket and interior valuables pocket. Removable external pocket for team logoing.

### Style RBOMB:

16" x 20" x 10"

Colors: Black.



## I. Rawlings® Bat Back Pack

Two external side bat sleeves. Inside valuable pocket. Padded shoulder strap.

Style RBPACK: 19" x 13".

Color: Black.

\* While Supplies Last.

H



## H. Rawlings® Covert Duffel

Durable Vinyl bottom for moisture protection. Shoe compartment. Name card holder and number decals. Holds two bats in sleeves above shoe compartment.

Style RCOVER: 26" x 13" x 13".

Colors: Black, Navy.

J



## J. Rawlings® Quick-Tee Pro

Lightweight design fits in any bat bag. Includes carrying bag.

Style RQTPRO: Adjustable from 28" to 43".

## A. Mizuno® Vintage Wheel Bag

Easy access for ventilated shoe compartment. Zip off pocket for easy embroidery. Fence clips. Valuables pocket with zippered closure. Off road wheels for natural surfaces. Holds 4 bats.

**Style Z60151:** 35" x 12" x 13".

**Colors:** Black, Navy, Red, Royal.



## B

## B. Mizuno® Vintage G4 Bat Bag

Easy access for ventilated shoe compartment. Zip off pocket for easy embroidery. Fence clips. Valuables pocket with zippered closure. Holds 4 bats.

**Style Z60152:** 35" x 12" x 13".

**Colors:** Black, Navy, Red, Royal.



## C. Mizuno® Premier Bat Bag

Holds three bats. Footwear storage compartment. Fence clip and zip off top pocket for easy embellishment.

**Style Z60142:** 34" x 10" x 8".

**Colors:** Black, Navy, Red, Royal.



## C



CARRY STRAP CONVERTS  
TO BACKPACK STRAPS

## D

## D. Mizuno® G3 Organizer Batpack

Drawcord compartment holds 2 bats. Mesh compartment for water bottle. Fence clips.

**Style Z60161:** 14" x 20" x 9".

**Colors:** Black, Navy, Red, Royal.



# CT Sportswear.com

## Wilson®

### E. Demarini® Vendetta Bag on Wheels

600 denier polyester. Holds up to 6 bats. Insulated water bottle pocket and side pocket for accessories. Tote style adjustable padded shoulder straps. Durable urethane wheels. Reinforced pull handle.

**Style W9405:** 37" x 12" x 10".

**Colors:** Black, Black/Navy, Black/Royal, Black/Scarlet.



### F. Wilson® Cat™ Softball Bat Bag

600 denier polyester. Holds 2 bats. Interior valuables compartment. Shoulder strap and fence hook.

**Style W9430:** 36" x 7" x 9".

**Colors:** Black/Purple.

*\*While Supplies Last.*



### G. Wilson® Players Tote

600 denier polyester. Holds 2 bats. Interior valuables compartment. Shoulder strap and fence hook.

**Style W9703:** 36" x 7" x 9".

**Colors:** White/Black, White/Navy, White/Royal, White/Scarlet.

*\*While Supplies Last.*



**H**

### H. Wilson® All Sport Bag

Holds 15 soccer balls. Large drawstring opening. Valuables pocket.

**Style W1816:** 25" x 26".

**Color:** Black.



**I**

### I. Wilson® Travel Bag/Backpack

Can be used as a backpack or duffel bag. Vented end pocket for balls, shoes or wet compartment.

**Style W1836:** 23" x 10 1/2" x 11 1/2".

**Colors:** Black/Navy, Black/Royal, Black/Scarlet, Black/Silver.





**A**



### A. Augusta Equipment Bags - Large/Medium

600-denier polyester with PVC coating. Zippered compartment with heavy zipper and two zipper pulls. Zippered front compartment removes for embellishment. Reinforced at all stress points. Durable vinyl on bottom of bag.

**Style 1780:** 39" x 19" x 15".

**Style 1785:** 35" x 17" x 15".

**Color:** Black.

**C**



### C. Augusta Bat Bag

600-denier polyester fabric with PVC coating. Web handles, web shoulder strap with black rubber shoulder guard. Separate zippered compartment for bats and zippered main compartment with inside zippered accessory pocket.

**Style 408:** 35" x 10" x 6 1/2".

**Colors:** Black, Navy, Red, Royal.

**D**



### D. Augusta Equipment Bag

600-denier polyester fabric with PVC coating and piping trim. Web handles with self-fabric handle wrapper are reinforced at stress points. Zippered main compartment, large zippered front pocket, inside zippered accessory pocket and separate shoe compartment.

**Style 406:** 36" x 11" x 11".

**Colors:** Black, Navy, Red, Royal.

**B**



### B. Augusta Gear Bag

420-denier nylon with PVC coating. Separate zippered compartments at each end and front side. U-shaped opening zipper with dual sliders. Removable and adjustable shoulder strap attached with black plastic hardware.

**Style 511:** 22" x 11" x 11".

**Colors:** Black, Forest Green, Navy, Red, Royal.

**E**



### E. Augusta 600-D Poly Small Gear Bag

600-denier polyester with PVC coating. Zippered main compartment has U-shaped opening with dual sliders. Separate zippered compartments on each end and on front. Matching web handles and shoulder strap with plastic hardware.

**Style 417:** 20" x 10" x 10".

**Colors:** Black, Dark Green, Kelly, Navy, Purple, Red, Royal.





## F. Augusta Reverb Backpack

210-denier nylon with PU coating. Fully reversible from drawstring bag to tote bag. Drawstring closure top. Zippered front pocket.

**Style 167:** 14" x 18".

**Colors:** Black/Gold, Black/Orange, Dark Green/Black, Gold/Royal, Maroon/Black, Navy/Gold, Purple/Gold, Red/Black, Royal/Black.



**G**

**H**



## G. Augusta Large Drawstring Backpack

70-denier nylon with PVC coating. Hemmed top with drawcord closure. Bottom corner grommets for reinforcement.

**Style 175:** 17" x 20".

**Colors:** Black, Columbia Blue, Dark Green, Gold, Kelly, Maroon, Navy, Orange, Pink, Purple, Red, Royal.

## H. Augusta Drawstring Backpack

100% nylon with soft waterproof coating. Hemmed top with drawstring closure and bottom-reinforcing corner grommets. Can be carried or worn as a backpack.

**Style 173:** 14" x 18".

**Colors:** Black, Columbia Blue, Dark Green, Gold, Kelly, Maroon, Navy, Orange, Pink, Purple, Red, Royal.

**I**



## I. Augusta Chill Fleece Blanket

Pill-free, ultra-soft 100% polyester chill fleece with edges stitched in black. Machine washable.

**Style 5060:** 50" x 60".

**Colors:** Black, Charcoal, Dark Green, Gold, Maroon, Navy, Purple, Red, Royal.



## J. Augusta Duffel Bags

12-ounce cotton canvas. Round bottom, outside handle and shoulder strap, snap hook top closure with metal keeper.

**Style 7000:** Standard, Round bottom, 21" x 36".

**Color:** Natural.

**Style 8000:** Jumbo, Square bottom, 30" x 40".

**Color:** Natural.

**K**



## K. Augusta Nylon Sport Bag

210-denier nylon with polyurethane coating. Wrap-around polypro web straps reinforced at stress points. Self-repairing zipper. D-rings.

**Style 2000:** 18" x 10".

**Colors:** Black, Dark Green, Gold, Maroon, Navy, Purple, Red, Royal.

**L**



## L. Augusta Medium Canvas Sport Bag

12-ounce cotton canvas. Round ends. Web straps reinforced at stress points. Self-repairing zipper.

**Style 2550:** 20" x 10".

**Colors:** Black, Navy, Red, Royal.