



YUKON ADVANCED OPTICS STRIVES TO CREATE THE BEST VALUE IN CONSUMER OPTICS BY CONTINUOUSLY INTEGRATING THE LATEST TECHNOLOGIES, UNIQUE DESIGNS AND MANUFACTURING METHODS TO CREATE EXCLUSIVE, FIRST-RATE OBSERVATION DEVICES.

OFFERING THE MOST COST-EFFECTIVE GEN 1, GEN SUPER/CF-SUPER, DIGITAL AND GEN 2+ NIGHT VISION SOLUTIONS IN THE FORM OF MONOCULARS, BINOCULARS, GOGGLES AND WEAPON MOUNTED NIGHT VISION DEVICES, YUKON ADVANCED OPTICS OFFER A COMPLETE RANGE OF SOLUTIONS FOR SEEING IN LOW LIGHT CONDITIONS.

YUKON ALSO OFFERS A COMPREHENSIVE RANGE OF COST EFFECTIVE BINOCULARS, SPOTTING SCOPES AND WEAPON SIGHTS FOR DAY LIGHT APPLICATION.

ALL YUKON ADVANCED OPTICS PRODUCTS ARE COVERED BY A 3 YEAR WARRANTY.

**NIGHT VISION  
DIGITAL NIGHT VISION  
DAY OPTICS  
NIGHT VISION ACCESSORIES**

## NVMT SPARTAN GEN 1 MONOCULARS

THE YUKON NVMT SPARTAN (NIGHT VISION MULTI TASK) RANGE IS PROBABLY THE MOST ERGONOMICALLY DESIGNED, AESTHETICALLY PLEASING, WELL FEATURED AND HIGHEST PERFORMING GEN 1 NIGHT VISION MONOCULAR AVAILABLE ON THE MARKET TODAY. POWER FOR THE SCOPE AND IR IS PROVIDED BY ONE 3v LITHIUM CR123A BATTERY (NOT SUPPLIED).

### NVMT SPARTAN 1x24



- # Product Code  
**24124**
- 1 Generation  
**Gen 1**
- + Magnification  
**1.0x**
- A Field of View  
**30°**
- 💡 IR Illuminator  
**Built-In**
- ⚖ Weight  
**380g**
- 📏 Dimensions  
**142x82x60mm**
- 🔋 Batteries  
**1x CR123A**

Ultra-compact, lightweight, easy to use and comfortable to hold, the NVMT Spartan 1x24 is the smallest and lightest of the NVMT Spartan range. The interchangeable 1x24 offers 1.0x image magnification and a wide 30° field of view.

For accessories see pages 24-33

### NVMT SPARTAN 4x50



- # Product Code  
**24127**
- 1 Generation  
**Gen 1**
- + Magnification  
**4.0x**
- A Field of View  
**15°**
- 💡 IR Illuminator  
**Built-In**
- ⚖ Weight  
**600g**
- 📏 Dimensions  
**191x87x60mm**
- 🔋 Batteries  
**1x CR123A**

The compact and lightweight NVMT Spartan 4x50 offers 4.0x image magnification and a 15° field of view.

For accessories see pages 24-33



#### ALL OF THE NVMT SPARTAN MODELS FEATURE:

- A TACTILE, SUREGRIP PLASTIC BODYSHELL AND, FOR EXTRA PROTECTION/GRIP, PARTIAL RUBBER ARMOURING
- A BUILT-IN SHORT RANGE IR ILLUMINATOR GIVES A VERY LOW LIGHT/TOTAL DARKNESS CAPABILITY
- A GREEN LED NEXT TO THE VIEWFINDER TO INDICATE WHEN THE IMAGE INTENSIFIER TUBE IS SWITCHED ON AND A RED LED TO INDICATE WHEN THE IR ILLUMINATOR IS SWITCHED ON.
- A DOUBLE TRIPOD SOCKET IS BUILT-IN AS STANDARD TO ACCEPT ACCESSORIES
- A BELT MOUNTABLE CASE.

## NVMT SPARTAN 2x24

- # Product Code 24121
- 1 Generation Gen 1
- + Magnification 2.0x
- A Field of View 30°
- 💡 IR Illuminator Built-In
- 📏 Weight 380g
- 📏 Dimensions 142x82x60mm
- 🔋 Batteries 1x CR123A



The compact and lightweight NVMT Spartan 2x24 monocular offers 2.0x image magnification and a 30° field of view.

For accessories see pages 24-33

## NVMT SPARTAN 2x24 WP



- # Product Code 24121WP
- 1 Generation Gen 1
- + Magnification 2.0x
- A Field of View 30°
- 💡 IR Illuminator Built-In
- 📏 Weight 380g
- 📏 Dimensions 142x82x60mm
- 🔋 Batteries 1x CR123A

The NVMT Spartan 2x24 WP differs from a standard NVMT Spartan 2x24 only in having a blue bodyshell which denotes that it is fully waterproof – it can be submerged in up to 1m of water for 10 minutes. To make it watertight the lens and eyepiece are permanently fixed so you cannot use interchangeable lenses or eyepiece accessories on this model.

For accessories see pages 24-33

## NVMT SPARTAN 3x42



- # Product Code 24122
- 1 Generation Gen 1
- + Magnification 3.0x
- A Field of View 20°
- 💡 IR Illuminator Built-In
- 📏 Weight 500g
- 📏 Dimensions 162x82x60mm
- 🔋 Batteries 1x CR123A

The compact and lightweight NVMT Spartan 3x42 monocular offers 3.0x image magnification and a 20° field of view.

For accessories see pages 24-33

## NVMT SPARTAN 3x42 WP

- # Product Code 24122WP
- 1 Generation Gen 1
- + Magnification 3.0x
- A Field of View 20°
- 💡 IR Illuminator Built-In
- 📏 Weight 500g
- 📏 Dimensions 162x82x60mm
- 🔋 Batteries 1x CR123A

The NVMT Spartan 3x42 WP's blue bodyshell denotes that it is fully waterproof – it can be submerged in up to 1m of water for 10 minutes. To make it watertight the lens and eyepiece are permanently fixed so you cannot use interchangeable lenses or eyepiece accessories on this model.

For accessories see pages 24-33



# PATROL

## GEN 1 MONOCULARS

ALL OF THE YUKON PATROL RANGE FEATURE:

- COMPACT AND DURABLE RUBBER ARMoured HOUSING
- THE BUILT-IN SHORT-RANGE IR ILLUMINATOR ALLOWS USE IN VERY LOW LIGHT/TOTAL DARKNESS
- POWER FOR THE SCOPE AND IR IS PROVIDED BY TWO AAA 1.5v ALKALINE/RECHARGEABLE BATTERIES (NOT SUPPLIED) WHICH PROVIDES UP TO 72 HOURS OF INDEPENDENT OPERATION (WITHOUT USE OF THE IR ILLUMINATOR)

- A POUCH CASE IS INCLUDED WITH ALL PATROL MODELS
- A ¼" WHITWORTH TRIPOD SOCKET IS FITTED TO THE BASE OF THE UNIT TO ACCEPT ACCESSORIES

## PATROL 2x24

- # Product Code 24081
- 1 Generation Gen 1
- Magnification 2.0x
- Field of View 23°
- IR Illuminator Built-In
- Weight 360g
- Dimensions 140x85x55mm
- Batteries 2x AAA



The Yukon Patrol 2x24 Gen 1 night vision scope is an entry-level, ultra compact monocular with 2.0x magnification. The most prominent feature is an eyepiece with handy rubber eyecup and a dioptre adjustment lever.

For accessories see pages 24-33

## PATROL 4x50

- # Product Code 24083
- 1 Generation Gen 1
- Magnification 4.0x
- Field of View 15°
- IR Illuminator Built-In
- Weight 400g
- Dimensions 190x87x62mm
- Batteries 2x AAA

The Yukon Patrol 4x50 night vision monocular has a new lens with a 50mm front optic increasing the magnification of the device up to 4.0x. The Patrol 4x50 night vision scope has the same basic bodysell design but is now complimented with these improved optical parameters.

For accessories see pages 24-33

## PATROL-D 3x42



- # Product Code 24082
- 1 Generation Gen 1
- Magnification 3.0x (2.0x)
- Field of View 15°
- IR Illuminator Built-In
- Weight 400g
- Dimensions 202x87x60mm
- Batteries 2x AAA

The Yukon Patrol-D 3x42 night vision device is a set consisting of the Patrol 2x24 night vision monocular and a 1.5x lens converter with a 42mm front optic that increases the magnification of the device to 3x.

For accessories see pages 24-33



# NV 5x60

## GEN 1 MONOCULARS

THE YUKON NV 5x60 NIGHT VISION MONOCULAR OFFERS THE HIGHEST IMAGE MAGNIFICATION FROM A GEN 1 UNIT. IT FEATURES A LARGE 60mm OBJECTIVE LENS TO MAXIMIZE LIGHT GATHERING AND GIVE A CRISP IMAGE.

THE 5.0x MAGNIFICATION ALLOWS A MAXIMUM VIEWING RANGE OF UP TO 300 METRES. THE DEVICE IS EQUIPPED WITH A SHORT-RANGE IR ILLUMINATOR, WHICH ALLOWS USE IN VERY LOW LIGHT/TOTAL DARKNESS.

## NV 5x60



A ¼" Whitworth tripod thread is fitted to the base of the unit which can be fitted with a Pulsar IR illuminator (805).

The NV 5x60 uses one CR123A lithium battery (not included) which can power the unit for up to 72 hours (without use of the IR illuminator).

For accessories see pages 24-33

- # Product Code 24065
- 1 Generation Gen 1
- Magnification 5.0x
- Field of View 12°
- IR Illuminator Built-In
- Weight 660g
- Dimensions 206x70x93mm
- Batteries 1x CR123A



# EXELON

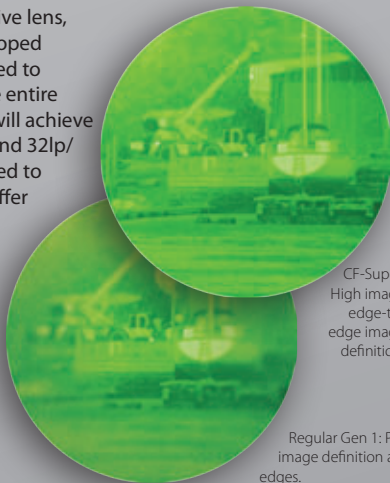
## GEN SUPER/CF-SUPER MONOCULARS

THE EXELON MONOCULAR NIGHT VISION RANGE IS FITTED WITH YUKON'S UNIQUE GEN SUPER/CF-SUPER IMAGE INTENSIFIER TUBE AND R-CONTACT LENS SYSTEM. WITH IMAGE RESOLUTION COMPARABLE TO ENTRY LEVEL GEN 2+ TUBES, THE EXELON RANGE OFFERS THE HIGHEST IMAGE QUALITY AVAILABLE IN BUDGET NIGHT VISION SOLUTIONS.

A unique design of the objective lens, coupled with the newly developed intensifier tube, has contributed to improved image quality in the entire field of view. CF-Super tubes will achieve up to 42lp/mm in the centre and 32lp/mm on the periphery compared to standard Gen 1 tubes which offer 30-32lp/mm in the centre and are unusable around the periphery.

The Exelon uses one CR123A lithium battery (not supplied).

When turned on, a green LED will illuminate and when the IR is switched on a red LED will come on.



CF-Super:  
High image  
edge-to-  
edge image  
definition.

Regular Gen 1: Poor  
image definition at  
edges.

## EXELON 3x50

- # Product Code  
24101
- GS Generation  
Gen Super
- + Magnification  
3.0x
- A Field of View  
13°
- IR Illuminator  
Built-In
- Weight  
500g
- Dimensions  
191x87x60mm
- Batteries  
1x CR123A



The Exelon 3x50 is a light weight monocular which has a 50mm objective lens and 3.0x image magnification.

For accessories see pages 24-33

## EXELON 4x50

- # Product Code  
24102
- GS Generation  
Gen Super
- + Magnification  
4.0x
- A Field of View  
13°
- IR Illuminator  
Built-In
- Weight  
500g
- Dimensions  
191x87x60mm
- Batteries  
1x CR123A



The Exelon 4x50 is a light weight monocular which has a 50mm objective lens and 4.0x image magnification.

For accessories see pages 24-33

## NVMT SPARTAN G2+ 3x50



The Yukon NVMT Spartan G2+ 3x50 features a Russian EPM66G-2 Gen 2+ Image Intensifier Tube (IIT). It features a tactile, suregrip plastic bodyshell and, for extra protection/grip, partial rubber armouring. The interchangeable 50mm lens offers 3.0x image magnification and a 14.5° field of view. It has a built-in, short-range Infrared (IR) illuminator for use in very low light/total darkness. A green LED next to the viewfinder indicates when the Image Intensifier Tube is switched on while a red LED indicates when the built-in IR illuminator is switched on.

A double 1/4" Whitworth tripod socket is built-in as standard to which additional high power IR illuminators can be fitted plus a Digital Camera Adaptor. A belt mountable pouch case is included.

Power for the scope is provided by one CR123A lithium battery (not supplied).

For accessories see pages 24-33

- # Product Code  
24057
- 2+ Generation  
Russian Gen 2+
- + Magnification  
3.0x
- A Field of View  
14.5°
- IR Illuminator  
Built-In
- Weight  
600g
- Dimensions  
208x86x60mm
- Batteries  
1x CR123A

## NVMT G2+ RUSSIAN GEN 2+ MONOCULARS

CURRENTLY OUR MOST COST-EFFECTIVE GEN 2+ UNIT THAT OFFERS MAGNIFICATION AND TOP OF THE NVMT RANGE.



# RANGER & RANGER PRO

## DIGITAL NIGHT VISION MONOCULARS

PIONEERS IN THE DIGITAL NIGHT VISION WORLD ARE YUKON'S RANGER & RANGER PRO 5x42, A MAJOR ADVANCE IN NIGHT VISION TECHNOLOGY. THE RANGER'S HAVE HIGH MAGNIFICATION AND RESOLUTION. THIS GIVES THE UNITS FANTASTIC VIEWING RANGES.

THE RANGER AND RANGER PRO BOTH USE A CCD WITH THE IMAGE VIEWED ON A BUILT-IN LCD SCREEN. UNLIKE IMAGE INTENSIFIER BASED NIGHT VISION SYSTEMS THESE UNITS ARE NOT EASILY DAMAGED BY BRIGHT LIGHT SOURCES. VARIABLE GAIN CONTROL ALLOWS YOU TO ADJUST THE IMAGE BASED ON AN INDIVIDUAL SCENES LIGHTING LEVEL.

THE BUILT-IN 940nm HIGH POWER INFRARED ILLUMINATOR - THE RIGHT-HAND LENS OF THE DEVICE - THROWS A BEAM OUT TO OVER 100m. IN ULTRA LOW LIGHT LEVELS THIS PROVIDES THE UNIT WITH ITS OWN LIGHT SOURCE. THE POWER OUTPUT OF THE ILLUMINATOR IS ALSO CONTROLLABLE OFFERING MAXIMUM FLEXIBILITY IN IMAGE BRIGHTNESS/CONTRAST.

RUNNING ON SIX AA BATTERIES, THE UNITS ARE SUPPLIED WITH TWO BATTERY CRADLES (FOR QUICK BATTERY CHANGE), A 12v CAR ADAPTOR AND A UK MAINS LEAD. THE UNITS WILL HAPPILY ACCEPT THE LATEST NIMH RECHARGEABLE BATTERIES (2700mAh) - IN FACT, THESE ARE THE RECOMMENDED POWER SOURCE WHEN OUT IN THE FIELD.

A SCREW THREAD IS BUILT-IN TO THE BASE ALLOWING ATTACHMENT TO A TRIPOD.

A VIDEO OUT FACILITY (LEAD INCLUDED) MEANS THAT THE UNITS CAN BE LINKED TO A RECORDING DEVICE SUCH AS A DVD RECORDER, VIDEO RECORDER, CAMCORDER, EXTERNAL MONITOR OR PAIRED WITH THE ULTRA COMPACT YUKON MPR PLAYER TO RECORD WHAT YOU ARE VIEWING.

## RANGER 5x42

#	Product Code 28041
□	Generation Digital
⦿	Magnification 5.0x
∠	Field of View 5°
💡	IR Illuminator Dual Built-In
⚖️	Weight 650g (800g with Batteries)
📏	Dimensions 170x116x76mm
🔋	Batteries 6x AA /12V Vehicle Power (Cable incl)/220-240V Mains Power (Transformer/ Cable incl)

The standard Ranger 5x42 gives a viewing range of up to 250m depending upon atmospheric conditions.

The unit offers true 5.0x optical image magnification through the left hand lens of the device. Currently competitive products can only achieve higher magnifications through digital magnification which means a loss of resolution.

- Maximum viewing range: 200m
- Digital night vision
- Comes with case & neck Strap
- In-built tripod mount
- Black/green rubberised bodyshell
- Video out socket
- Variable brightness/contrast control
- LED 'on' & 'low battery' indicators
- Built-in low output & high output IR illuminators

For accessories see pages 24-33











## THE RANGER PRO

"OFFERS THE CLOSEST DIGITAL NV PERFORMANCE TO A GEN 2 IMAGE INTENSIFIER IN BOTH SHARPNESS AND BRIGHTNESS AND AS AN EXTRA BONUS CAN'T BE DAMAGED IN NORMAL LIGHTING CONDITIONS - EVEN CAR HEADLIGHTS AND STREETLIGHTS WILL NOT BLOW IT OUT."

SHOOTING SPORTS, AUGUST 2009



## RANGER PRO 5x42

-  Product Code  
**28046**
-  Generation  
**Digital**
-  Magnification  
**5.0x**
-  Field of View  
**5°**
-  IR Illuminator  
**Dual Built-In**
-  Weight  
**650g (800g with Batteries)**
-  Dimensions  
**170x116x76mm**
-  Batteries  
**6x AA /12V Vehicle Power (Cable incl)/220-240V Mains Power (Transformer/Cable incl)**



The Ranger Pro 5x42 digital night vision device is designed on the basis of the Ranger 5x42. In comparison to the standard Ranger a more sensitive CCD coupled with advanced SumLight™ technology gives greater viewing range of up to 500m (depending on atmospheric conditions) and a sharper image.

A Sony CCD provides improved imaging over the standard Ranger models. Together with the addition of a variable gain control dial (brightness/contrast control), this offers noticeable performance advantages over the previous model.

The unit offers true 5.0x optical image magnification through the left hand lens of the

device. The right hand lens projects a high output 940nm IR light beam to provide a built-in illumination capability.

Currently competitive products can only achieve higher magnifications through digital magnification which means a loss of resolution.

- Maximum viewing range: 500m
- Digital night vision
- Comes with case & neck Strap
- In-built tripod mount
- Gen: Digital (high sensitivity CCD sensor array)
- Sum Light™ software technology
- Black rubberised bodyshell
- Video out socket
- Variable brightness/contrast control
- LED 'on' & 'low battery' indicators
- Built-in low output & high output IR illuminators

For accessories see pages 24-33

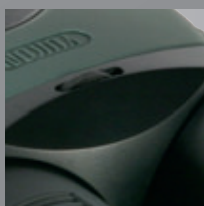
IR Illuminator



Viewing Lens



Adjustable Gain Control



## RANGER 5x42 MPR KIT

A kit comprising the 28041 Ranger 5x42 and the 27041 MPR.

Although the Ranger is designed primarily as a hand-held night vision monocular it can also be attached to a tripod for stationary use and/or video recording. With a built-in video output connector the Ranger can be seamlessly connected to the MPR player/recorder.

The MPR is also available as a separate accessory (27041) so you can connect it to the Ranger/Ranger Pro 5x42.

 Product Code  
**28041VK**



## RANGER MPR KIT

### DIGITAL NIGHT VISION MONOCULARS

COMPRISING OF A MOBILE PLAYER RECORDER (MPR) AND A RANGER 5x42 THE MPR KIT CAN RECORD EVERYTHING THAT YOU SEE THROUGH THE RANGER.

## BATTERY PACKS

THE RECHARGEABLE LI-POL BATTERY PACKS - EPS3 AND EPS5 - ARE DESIGNED TO POWER PULSAR AND YUKON DIGITAL DEVICES AND NIGHT VISION RIFLESOPES.

THE USE OF BATTERY PACKS SIGNIFICANTLY - UP TO 20 HOURS - INCREASES SELF-CONTAINED OPERATION OF EXTERNAL EQUIPMENT.

SEE PAGE 51 FOR MORE INFORMATION

## EPS3 & EPS5



EPS3



EPS5

Product	Capacity	Dimensions	Weight	Product Code
EPS3	2.4 Ah	85x76x40mm	230g	79111
EPS5	5.0 Ah	106x75x20mm	350g	79112



# TRACKER

## GEN 1 BINOCULARS & GOGGLES

EACH NIGHT VISION BINOCULAR (NVB) IN THE TRACKER RANGE IS A COMPACT, LIGHTWEIGHT TWIN-TUBE DEVICE FOR EFFECTIVE OBSERVATION IN LOW LIGHT CONDITIONS AS WELL AS IN COMPLETE DARKNESS.

ALL TRACKER NVB'S ARE FITTED WITH TWO HIGH GRADE GEN 1 IMAGE INTENSIFIER TUBES. MOST FEATURE COMFORTABLE CENTRAL FOCUSING, FIXED EYE SPAN DISTANCE, ARE EASY TO USE AND COMFORTABLE TO HOLD. A SOFT ONE-PIECE 'EYECUP' PREVENTS EXTERNAL LIGHT

INTRUSION. THE PERMANENTLY ATTACHED ECLIPSE OBJECTIVE LENS CAPS CAN BE OPENED RIGHT BACK ALONG THE BINOCULARS BODY THUS PREVENTING LOST OR DANGLING LENS CAPS.

ALL OF THE TRACKER NVB'S FEATURE A GREEN LED TO INDICATE TUBE ON/OFF AND A RED LED TO INDICATE WHETHER THE IR ILLUMINATOR IS ON/OFF. THE LED'S ARE POSITIONED NEXT TO THE ON/OFF AND IR ILLUMINATOR SWITCHES.

### TRACKER RX 3.5x40



- # Product Code 25024
- 1 Generation Gen 1
- + Magnification 3.5x (2.0x)
- A Field of View 15° (30°)
- 💡 IR Illuminator Single Built-In
- ⚖️ Weight 800g
- 📏 Dimensions 225x123x72mm
- 🔋 Batteries 1x CR123A

Based on the Tracker LT model, the Tracker RX 3.5x40 offers dual magnification options via the included 1.7x lens converter.

The unit is fitted with a single IR illuminator for use in very low light/total darkness.

The Tracker RX 3.5x40 is the biggest and heaviest of the Tracker variants. It offers a standard 2.0x image magnification and a wide 30° field of view which will correspond with the Tracker LT. With the 1.7x lens converter fitted it offers 3.5x image magnification and a 15° field of view.

### TRACKER LT 2x24



- # Product Code 25023
- 1 Generation Gen 1
- + Magnification 2.0x
- A Field of View 30°
- 💡 IR Illuminator Single Built-In
- ⚖️ Weight 600g
- 📏 Dimensions 175x123x72mm
- 🔋 Batteries 1x CR123A

The unit is fitted with a single IR illuminator for use in very low light/total darkness.

The Tracker LT 2x24 is the smallest and lightest of the Tracker variants. It offers 2.0x image magnification and a wide 30° field of view.

For accessories see pages 24-33

### TRACKER 3x42



- # Product Code 25028
- 1 Generation Gen 1
- + Magnification 3.0x
- A Field of View 20°
- 💡 IR Illuminator Single Built-In
- ⚖️ Weight 600g
- 📏 Dimensions 175x123x72mm
- 🔋 Batteries 1x CR123A

The Tracker 3x42 has the greatest standard magnification in the Tracker NVB range featuring 3.0x image magnification, a 20° field of view and benefits from independent objective lens focusing.

The unit is fitted with a single IR illuminator for use in very low light/total darkness.

### TRACKER LT 2x24 WP



- # Product Code 25023WP
- 1 Generation Gen 1
- + Magnification 2.0x
- A Field of View 30°
- 💡 IR Illuminator Single Built-In
- ⚖️ Weight 600g
- 📏 Dimensions 175x123x72mm
- 🔋 Batteries 1x CR123A

Based on the Tracker LT model, the Tracker LT 2x24 WP has a blue bodyshell to indicate that they have a higher level of water resistance - IPX5 - compliant with the IEC 60529 standard (jets of water directed at the body from either side do no harm to the device). This model is therefore better suited to any application where there is a higher than normal chance of the unit getting wet.

The unit is fitted with a single IR illuminator for use in very low light/total darkness.

The Tracker LT 2x24 WP offers 2.0x image magnification and a wide 30° field of view.

For accessories see pages 24-33



POWER FOR THE TRACKER NVB'S AND BUILT-IN IR ILLUMINATOR IS PROVIDED BY ONE CR123A LITHIUM BATTERY (NOT SUPPLIED).

ALL OF THE TRACKER NVB'S ARE SUPPLIED WITH A SHOULDER CASE.

## TRACKER PRO 2x24

- # Product Code  
25022
- 1 Generation  
Gen 1
- + Magnification  
2.0x
- A Field of View  
30°
- 💡 IR Illuminator  
Dual Built-In
- 📏 Weight  
600g
- 📏 Dimensions  
175x123x72mm
- 🔋 Batteries  
1x CR123A



The unit is fitted with two independent infrared illuminators for long and short range detection in very low light/total darkness.

The Tracker PRO 2x24 offers 2.0x image magnification and a wide 30° field of view.

For accessories see pages 24-33

## TRACKER 1x24 NVG

- # Product Code  
25025
- 1 Generation  
Gen 1
- + Magnification  
1.0x
- A Field of View  
30°
- 💡 IR Illuminator  
Single Built-In
- 📏 Weight  
800g
- 📏 Dimensions  
175x123x72mm
- 🔋 Batteries  
1x CR123A



The Tracker 1x24 NVG is a comfortable hands-free way of being able to see at night without having to hold a night vision unit. The design of the goggles minimizes fatigue if used for long periods of time. The headmount allows adjustment of the device in multiple directions.

The unit is fitted with a single short-range IR illuminator for use in very low light/total darkness. Power is provided by one CR123A lithium battery (not supplied).

The Tracker 1x24 NVG offers 1.0x image magnification and a 30° field of view.

## NVMT SPARTAN 1x24 GOGGLE KIT



Featuring a high grade Gen 1 Image Intensifier Tube (IIT), the NVMT Spartan 1x24 has a built-in, short-range Infrared (IR) illuminator for use in very low light/total darkness. Power for the scope and IR is provided by one CR123A lithium battery (not supplied). A green LED next to the viewfinder indicates when the Image Intensifier Tube is switched on while a red LED indicates when the IR Illuminator is switched on.

Twin tripod sockets are built-in as standard.

The NVMT Spartan 1x24 is the smallest and lightest of the NVMT variants. It offers 1.0x image magnification and a wide 30° field of view.

The 29032 Headmount is supplied as standard with this variant. This allows hands-free, walkabout operation.

For accessories see pages 24-33

- # Product Code  
24125
- 1 Generation  
Gen 1
- + Magnification  
1.0x
- A Field of View  
30°
- 💡 IR Illuminator  
Built-In
- 📏 Weight  
600g
- 📏 Dimensions  
142x82x60mm
- 🔋 Batteries  
1x CR123A

## NVMT SPARTAN GEN 1 GOGGLES

THE YUKON NVMT SPARTAN (NIGHT VISION MULTI TASK) IS PROBABLY THE MOST ERGONOMICALLY DESIGNED, AESTHETICALLY PLEASING, WELL FEATURED AND HIGHEST PERFORMING GEN 1 NIGHT VISION MONOCULAR AVAILABLE ON THE MARKET TODAY. ULTRA-COMPACT, LIGHTWEIGHT, EASY TO USE AND COMFORTABLE TO HOLD, THE NEW NVMT IS UNIQUE FOR A BUDGET NIGHT SCOPE IN OFFERING A TACTILE, SUPERGRIP PLASTIC BODYSHELL AND, FOR EXTRA PROTECTION/GRIP, PARTIAL RUBBER ARMOURING.



# SENTINEL TACTICAL

## GEN 1 WEAPON SCOPES

THE YUKON SENTINEL - FITTED WITH HIGH GRADE GEN 1 TUBES - IS A MODERN, COMPACT, SPORTING NIGHT VISION RIFLE SCOPE THAT HAS BEEN DEVELOPED FROM EXPERIENCE GAINED FROM THE SUCCESSFUL NVRS SERIES.

INCLUDED WITH THE SENTINEL IS A UNIQUE REMOTE ON-OFF SWITCH THAT CAN BE LOCATED ON THE STOCK OR FOREGRIP OF A RIFLE, THUS ENABLING THE SHOOTER TO ACTIVATE THE SENTINEL AND BUILT-IN IR ILLUMINATOR WITHOUT REMOVING THEIR HANDS FROM THE WEAPON.

A GREEN LED BELOW THE VIEWFINDER INDICATES WHEN THE IMAGE INTENSIFIER TUBE IS SWITCHED ON WHILE A RED LED INDICATES WHEN THE IR ILLUMINATOR IS IN OPERATION.

THE UNIT IS POWERED BY TWO AA/MN1500 1.5v ALKALINE/LITHIUM BATTERIES (NOT INCLUDED).

A PROTECTIVE CASE IS INCLUDED.





## SENTINEL TACTICAL 2.5x50



# Product Code  
26015T

1 Generation  
Gen 1

+ Magnification  
2.5x

A Field of View  
13°

💡 IR Illuminator  
Focusable Built-In

⚖ Weight  
1055g

📏 Dimensions  
270x90x100mm

🔋 Batteries  
2x AA

The Sentinel 2.5x50 offers 2.5x image magnification.

Unlike some competitive products, the power supply is totally silent - a major advantage in a hunting scenario. The large 50mm multicoated front lens provides good light gathering capabilities while maintaining a compact profile.

- Green 'tube on' & red 'IR on' LEDs.
- Weaver accessory rail
- Remote on/off switch
- System case
- Accepts a 1.7x lens converter giving 4.3x magnification

For accessories see pages 24-33

## SENTINEL TACTICAL 3x60



# Product Code  
26016T

1 Generation  
Gen 1

+ Magnification  
3.0x

A Field of View  
11°

💡 IR Illuminator  
Focusable Built-In

⚖ Weight  
1205g

📏 Dimensions  
307x90x100mm

🔋 Batteries  
2x AA

The Sentinel 3x60 offers 3.0x image magnification.

Unlike some competitive products, the power supply is totally silent - a major advantage in a hunting scenario. The large 60mm multicoated front lens provides good light gathering capabilities while maintaining a compact profile.

- Green 'tube on' & red 'IR on' LEDs.
- Weaver accessory rail
- Remote on/off Switch
- System case

For accessories see pages 24-33

# SENTINEL TACTICAL 2.5x50

"A VERY GOOD GEN 1 NIGHT VISION SCOPE BUT ONE THAT OFFERS VALUE FOR MONEY FROM THE OUTSET BACKED WITH 3 YEARS PEACE OF MIND"

GUN MART, OCTOBER 2007



# NVRS TACTICAL & NVRS-F TACTICAL GEN 1 WEAPON SCOPES

THE YUKON NVRS TACTICAL IS A MODERN, COMPACT, SPORTING NIGHT VISION RIFLE SCOPE. MANUFACTURED IN PART FROM MILITARY-GRADE TITANIUM, THE BODYSHELL IS DESIGNED TO PROVIDE EXCEPTIONAL WEIGHT/STRENGTH CHARACTERISTICS AND IS FITTED WITH HIGH GRADE GEN 1 TUBES.

UNLIKE SOME COMPETITIVE PRODUCTS, THE POWER SUPPLY IS TOTALLY SILENT - A MAJOR ADVANTAGE IN A HUNTING SCENARIO.

A GREEN LED BELOW THE VIEWFINDER INDICATES WHEN THE IMAGE INTENSIFIER TUBE IS SWITCHED ON WHILE A RED LED INDICATES WHEN THE IR ILLUMINATOR IS SWITCHED ON.

INCLUDED WITH THE NVRS TACTICAL IS A UNIQUE REMOTE ON-OFF SWITCH THAT CAN BE LOCATED ON THE STOCK OR FORE PIECE OF A RIFLE, THUS ENABLING THE SHOOTER TO ACTIVATE THE NVRS AND BUILT-IN IR ILLUMINATOR WITHOUT REMOVING THEIR HANDS FROM THE WEAPON.

THE NVRS TACTICAL WEAPON SCOPE IS POWERED BY TWO AA/MN1500 1.5v ALKALINE/LITHIUM BATTERIES (NOT INCLUDED).



Front focus capability (NVRS-F only).



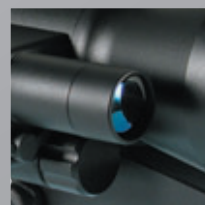
A Tactical Weaver rail is fitted on the left side of the unit allowing additional accessories to be fitted. The NVRS has a second Weaver rail on the top of the unit.



The ergonomic eyecup makes viewing more comfortable, while the green glow from the image intensifier tube is shielded from outside observation.



Internal windage/elevation adjustments are effected via knobs conveniently placed to the right of the eyepiece. The controls are ergonomically designed and can be used with gloved hands and in total darkness.



An Infra Red (IR) Illuminator is built-in to the right side of the scope, providing limited range enhanced viewing when the subject is in shadows or complete darkness.

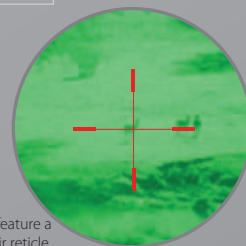


The large 50mm multicoated front lens provides good light gathering capabilities while maintaining a compact profile.



Model:  
NVRS-F Tactical 2.5x50

Model:  
NVRS Tactical 2.5x50



The NVRS Tactical & NVRS-F feature a variable brightness, crosshair reticle.

## NVRS-F TACTICAL 2.5x50

The Yukon NVRS-F Tactical 2.5x50 is a modern, compact, sporting night vision rifle scope, based on the successful NVRS model.

The major difference between the NVRS-F and the NVRS is in the focusing. The NVRS-F has been designed specifically to meet the unique requirements of the UK pest control market to identify and engage small targets at close range. By adding a front focus capability to the design, a much clearer image is available since the target is clearly focused on the front of the image intensifier tube. The second major advantage is that minimum focus is reduced to just 2.0m.

A Tactical Weaver rail is fitted on the left side of the unit allowing additional accessories to be fitted such as the optional 29072 100mW high power IR Flashlight, 27012 Red Dot Laser Sight or even a lightweight gun lamp. The optional 29091 1.7x Lens Converter is also available which increases image magnification from 2.5x to 4.3x. Minimum focus with this attached is still only 4.0m.

- Focusable down to 2m
- Single Weaver accessory rail
- Remote on/off switch
- System case



## NVRS TACTICAL 2.5x50

The Tactical Weaver rails fitted on top and the left side of the unit allow additional accessories to be fitted such as the optional 29072 100mW high power IR Flashlight, 27012 Red Dot Laser Sight or even a lightweight gun lamp.

The optional 29091 1.7x Lens Converter is also available which increases image magnification from 2.5x to 4.3x.

- Dual Weaver accessory rails
- Remote on/off switch
- System case

#	Product Code 26013T
1	Generation Gen 1
+	Magnification 2.5x
A	Field of View 15°
💡	IR Illuminator Built-In
📏	Weight 950g
📏	Dimensions 255x80x85mm
🔋	Batteries 2x AA

For accessories see pages 24-33

#	Product Code 26014T
1	Generation Gen 1
+	Magnification 2.5x
A	Field of View 15°
💡	IR Illuminator Built-In
📏	Weight 1000g
📏	Dimensions 255x80x85mm
🔋	Batteries 2x AA

For accessories see pages 24-33



## NVMT SPARTAN WEAPON KIT



# Product Code  
**26141**

1 Generation  
**Gen 1**

+ Magnification  
**3.0x M/0.5x WS.**

A Field of View  
**20°**

💡 IR Illuminator  
**Built-In**

📏 Weight  
**700g**

📏 Dimensions  
**261x82x60mm**

🔋 Batteries  
**1x CR123A**

Since the NVMT does not have a built-in reticle, a Red Dot Laser Sight is part of the kit to give you an aiming mark.

The NVMT Spartan Weapon Kit includes:

- NVMT Spartan 3x42 with standard eyepiece for hand-held use (3.0x magnification)
- NVMT weapon mount (Weaver/standard airgun rail)
- Long eye relief eyepiece (0.5x magnification) for weapon mount use
- Yukon-1 Laser Pointer
- System carry case

## SPARTAN WEAPON KIT GEN 1 WEAPON SCOPES

THE YUKON NVMT SPARTAN WEAPON KIT IS AVAILABLE FOR USE AS A SHORT-RANGE NIGHT VISION WEAPON SCOPE - IDEAL FOR PEST CONTROL, WILD LIFE OBSERVATION OR PAINTBALL.

THIS VERSION OF THE NVMT SPARTAN OFFERS THE OPTION OF HAND-HELD USE (3.0x MAGNIFICATION) OR ADAPTATION TO A RIFLE VIA THE INCLUDED WEAPON MOUNT AND LONG EYE RELIEF EYEPIECE (0.5x MAGNIFICATION).

THE UNIT CAN BE USED WITH THE STANDARD EYEPIECE WHEN MOUNTED TO A PRE-CHARGED AIR RIFLE (NO RECOIL) GIVING 3.0x MAGNIFICATION. WHEN USED WITH A BREAK-BARREL AIR RIFLE OR LARGER CALIBRE WEAPON, THE LONGER EYE RELIEF EYEPIECE (0.5x MAGNIFICATION) HAS TO BE USED TO AVOID INJURING YOUR EYE DUE TO RECOIL.



## 100X DAY OPTICS SPOTTING SCOPES

THE YUKON 100X IS A REVOLUTIONARY NEW SPOTTING SCOPE WITH UNIQUE OPTICAL CHARACTERISTICS – IT HAS TWO OPTICAL CHANNELS, 6-25 x 25mm AND 25-100x 100mm. THIS IS THE FIRST SPOTTING SCOPE ON THE MARKET USING THIS SYSTEM AND THAT WILL DELIVER MAGNIFICATIONS FROM 6x TO 100x WITHOUT THE NEED TO CHANGE EYEPIECES. THE EXCELLENT LIGHT GATHERING CAPABILITIES OF THE 100mm MULTICOATED OBJECTIVE LENS MAKES THE PICTURE CLEAR AND BRIGHT IN MOST VIEWING CONDITIONS. A SLIGHT DROP OFF IN IMAGE QUALITY HAS TO BE ALLOWED FOR AT

MAXIMUM ZOOM DUE TO THE EXTREME MAGNIFICATION.

THE UNIT'S BODYSHELL IS RUGGED, WEATHER RESISTANT AND, CONSIDERING THE HIGH MAGNIFICATION RANGE, IS RELATIVELY COMPACT AND LIGHTWEIGHT. A LENS HOOD IS SUPPLIED TO REDUCE FLARE AND PROTECT THE FRONT ELEMENT FROM RAIN - IT IS REVERSIBLE WHEN NOT IN USE. FITTED WITH A TRIPOD SOCKET, A STURDY TRIPOD IS ESSENTIAL FOR MAXIMUM PERFORMANCE AT HIGH MAGNIFICATION.

ALL MODELS AND KITS OF THE 100X SPOTTING SCOPES INCLUDE A SHOULDER CASE.

### 100X



- # Product Code  
21031
- + Magnification  
6.0-100.0x
- A Field of View  
(25x/100x):  
38.5/10.5m at  
1000m
- Weight  
1500g
- Dimensions  
425x165x119mm

The angled, rotating eyepiece allows use when you are unable to align your viewing position with the scope, such as when lying in a prone position.

For accessories see pages 24-33

### 100X LT



- # Product Code  
21032S
- + Magnification  
6.0-100.0x
- A Field of View  
(25x/100x):  
38.5/10.5m at  
1000m
- Weight  
1500g
- Dimensions  
425x165x119mm

The Yukon 100X LT comes with a straight eyepiece that is better suited to following moving subjects than the 45° eyepiece of the 21031 100X Spotting Scope.

For accessories see pages 24-33

### 100X KIT



- # Product Code  
21031K
- + Magnification  
6.0-100.0x
- A Field of View  
(25x/100x):  
38.5/10.5m at  
1000m
- Weight  
1500g
- Dimensions  
425x165x119mm

The kit comprises a 100X Spotting Scope and a 21014 Heavy Duty Tabletop Tripod.

For accessories see pages 24-33

### 100X LT KIT



- # Product Code  
21032SK
- + Magnification  
6.0-100.0x
- A Field of View  
(25x/100x):  
38.5/10.5m at  
1000m
- Weight  
1500g
- Dimensions  
425x165x119mm

The kit comprises a 100X LT Spotting Scope and a 21014 Heavy Duty Tabletop Tripod.

For accessories see pages 24-33



## 20-50x50 DAY OPTICS SPOTTING SCOPES

THE YUKON 20-50x50 WA IS AN ULTRA-COMPACT, LIGHTWEIGHT GENERAL PURPOSE SPOTTING SCOPE OFFERING A POWERFUL 20x TO 50x MAGNIFICATION RANGE. THE WIDE ANGLE (WA) OPTICS OFFER A WIDER FIELD OF VIEW THAN MANY COMPETITIVE PRODUCTS WHILE THE 50mm FRONT OPTIC OFFERS GOOD LIGHT GATHERING CAPABILITY. FULLY MULTI-COATED LENSES MAXIMISE OPTICAL PERFORMANCE. THE RUBBER ARMOURING OFFERS PROTECTION AGAINST LIGHT KNOCKS AND PROVIDES GOOD WEATHER RESISTANCE.

### 20-50x50 WA

#	Product Code 21014
+	Magnification 20-50x
A	Field of View 2.3° - 1.9°
⚖	Weight 700g
📏	Dimensions 240x110x76mm



The 20-50x50 WA has a built-in tripod socket and comes supplied with a detachable sighting device and a soft case.

- Tripod mount
- Case

For accessories see pages 24-33

### 20-50x50 WA KIT

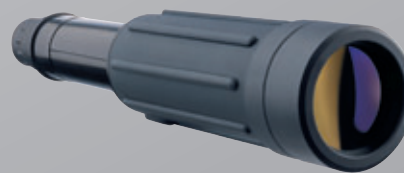


#	Product Code 21014K
+	Magnification 20.0-50.0x
A	Field of View 2.3° - 1.9°
⚖	Weight 1050g
📏	Dimensions 240x110x76mm

The 20-50x50 WA Kit includes the 29013 Universal Tripod Kit (Lightweight Tripod/Car Window Mount Adaptor/Arm Stabilisation Pad), detachable sighting device and a carry case.

For accessories see pages 25-32

### SCOUT 20x50



The Scout 20x50 20x Magnification with a 50mm objective lens.

- Tripod mount
- Lens cloth
- Case

For accessories see pages 24-33

#	Product Code 21021
+	Magnification 20.0x
A	Field of View 3.1°
⚖	Weight 450g
📏	Dimensions 230-370x70x70mm

### SCOUT 30x50 WA



The Scout 30x50 WA offers 30x Magnification with a 50mm objective lens.

- Tripod mount
- Lens cloth
- Case

For accessories see pages 24-33

#	Product Code 21023
+	Magnification 30.0x
A	Field of View 2.3°
⚖	Weight 450g
📏	Dimensions 230-370x70x70mm

## SCOUT DAY OPTICS SPOTTING SCOPES

THE SCOUT IS A MODERN HIGH MAGNIFICATION DRAW-TUBE SPOTTING SCOPE. LIGHTWEIGHT, COMPACT AND RUBBER ARMoured, IT IS EASILY PORTABLE WHETHER FOR USE WATCHING WILDLIFE, AS A TRAVEL/HIKING SCOPE, FOR MARINE OBSERVATION OR FOR SPORTS USE. THE SCOUT FEATURES A LARGE DIAMETER 50mm FRONT LENS WHICH PRODUCES GOOD LIGHT GATHERING AND TRANSMISSION PROPERTIES. THIS IS FURTHER ENHANCED WITH SPECIAL MULTI-LAYERED MAGNESIUM FLUORIDE COATINGS.



# FUTURUS

## DAY OPTICS BINOCULARS

THE NEW YUKON FUTURUS RANGE OF BINOCULARS MIX ERGONOMIC DESIGN WITH RUGGED GOOD LOOKS.

THE RUBBER-ARMOURED, STYLISH, SCULPTURED BODYSHELLS ARE COUPLED WITH SUPERB MULTI-COATED LENSES TO OFFER EXCEPTIONALLY GOOD PERFORMANCE IN THEIR PRICE BRACKET. THEIR TRUE COLOUR™ OPTICS DO NOT COLOURISE THE VIEW, BUT GIVE SHARP EDGE-TO-EDGE DEFINITION AND CLEAR COLOURS THE WAY YOUR UNAIDED EYE SEES THEM.

A TRIPOD ADAPTOR SOCKET IS BUILT-IN AS STANDARD BETWEEN THE TWO OPTICAL CHANNELS.

EVERY BINOCULAR HAS A NECK STRAP AND IS SUPPLIED WITH A CARRYING CASE.

### FUTURUS 7x50 WA



- # Product Code 22031
- Magnification 7.0x
- Field of View 6.0°
- Weight 1030g
- Dimensions 200x215x70mm

### FUTURUS 10x50 WA



- Product Code 22032
- Magnification 10.0x
- Field of View 6.0°
- Weight 1030g
- Dimensions 193x215x70mm

### FUTURUS 12x50 WA



- Product Code 22033
- Magnification 12.0x
- Field of View 5.3°
- Weight 1000g
- Dimensions 185x215x70mm

### FUTURUS 16x50



- Product Code 22034
- Magnification 16.0x
- Field of View 4.0°
- Weight 1020g
- Dimensions 185x215x70mm

### FUTURUS 20x50



- Product Code 22035
- Magnification 20.0x
- Field of View 3.0°
- Weight 990g
- Dimensions 185x215x70mm

### FUTURUS 8x40 WA



- Product Code 22038
- Magnification 8.0x
- Field of View 7.5°
- Weight 820g
- Dimensions 150x190x63mm



A unique facility is the built-in, rotatable Eclipse™ front and rear lens caps (only front lens caps on 7x50 WA).



Dioptre correction is available on the right eyepiece



A large knurled focusing wheel provides positive focus control.

# FUTURUS 8-24x50

## DAY OPTICS BINOCULARS

THE FUTURUS 8.0-24.0x50 ZOOM BINOCULAR IS A 'UNIVERSAL' MODEL COMBINING THE BEST FEATURES AND MAGNIFICATIONS OF THE FUTURUS RANGE. THE PORRO PRISM BASED OPTICAL SCHEMATIC AND FULLY MULTICOATED OPTICS PROVIDE A HIGH QUALITY IMAGE. A DEPENDABLE VARIABLE POWER MECHANISM PERMITS GRADUAL CHANGES TO THE OPTICAL MAGNIFICATION.

### FUTURUS 8-24x50



- # Product Code 22131
- Magnification 8.0-24.0x
- Field of View 4.4-2.2°
- Weight 1000g
- Dimensions 197x217x70mm



## FUTURUS PRO 7x50 WA    FUTURUS PRO 10x50 WA    FUTURUS PRO 16x50



# Product Code  
22061NF (No Filters)  
22061

Magnification  
7.0x

Field of View  
115.3m at 1km

Weight  
750g

Dimensions  
220x195x64mm

The Futurus Pro 7x50 WA offers both the widest field of view and also the brightest image in low light conditions. Because the magnification (7.0x) divides in to the size of the front optic (50mm) more times than any other combination, this gives you a way to compare different models relative brightness.

- N.B. Due to the increased eye relief of the 7x50WA model, it is not possible to fit Eclipse™ lens caps to the rear eyepieces, only to the front optics.



Product Code  
22062NF (No Filters)  
22062

Magnification  
10.0x

Field of View  
113.6m at 1km

Weight  
750g

Dimensions  
220x190x64mm

The Futurus Pro 10x50 WA offers the optimal compromise between magnification and angular field of view.



Product Code  
22064NF (No Filters)  
22064

Magnification  
16.0x

Field of View  
69.8m at 1km

Weight  
750g

Dimensions  
220x178x64mm

High magnification coupled with compact dimension makes the Futurus Pro 16x50 ideal for viewing subjects at longer distances.



Futurus Pro ranging reticle in the right eyepiece.

## FUTURUS PRO DAY OPTICS BINOCULARS

THE NEW YUKON FUTURUS PRO RANGE OF BINOCULARS MIX ERGONOMIC DESIGN WITH RUGGED GOOD LOOKS.

THE RUBBER-ARMOURED, STYLISH, SCULPTURED BODYSHELLS ARE COUPLED WITH SUPERB MULTI-COATED LENSES TO OFFER EXCEPTIONALLY GOOD PERFORMANCE IN THEIR PRICE BRACKET. THEIR TRUE COLOUR™ OPTICS DO NOT COLOURISE THE VIEW, BUT GIVE SHARP EDGE-TO-EDGE DEFINITION AND CLEAR COLOURS THE WAY YOUR UNAIDED EYE SEES THEM.

A UNIQUE FACILITY IS THE BUILT-IN, ROTATABLE ECLIPSE™ LENS CAPS .

A LARGE KNURLED FOCUSING WHEEL PROVIDES POSITIVE FOCUS CONTROL. DIOPTRIC CORRECTION IS AVAILABLE ON THE RIGHT EYEPIECE. A TRIPOD ADAPTOR SOCKET IS BUILT-IN AS STANDARD BETWEEN THE TWO OPTICAL CHANNELS.

THE FUTURUS PRO HAVE A BUILT-IN RANGING RETICLE IN THE RIGHT EYEPIECE.



## SIDEVIEW DAY OPTICS BINOCULARS

ULTRA-COMPACT AND LIGHTWEIGHT, SIDEVIEW BINOCULARS ARE PERFECT FOR CONSTANT LONG-TERM USE, INCLUDING HUNTING, ANIMAL OBSERVATION AND BIRD WATCHING, LANDSCAPE AND URBAN OBSERVATION, VACATIONS, SPORTS EVENTS, ETC. THEY ARE SMALL ENOUGH TO FIT IN A JACKET POCKET OR CAR GLOVE BOX.

THE ERGONOMIC EYESHADE PROTECTS YOUR EYES AGAINST LATERAL AMBIENT LIGHT (SUNSET OR SUNRISE) DURING OBSERVATION. THE SOFT-TOUCH BODY COATING ENSURES A RELIABLE GRIP EVEN WITH WET HANDS AND ALLOWS COMFORTABLE LONG-TERM OBSERVATION.

OTHER USEFUL FEATURES INCLUDE A COMFORTABLE DIOPTRIC ADJUSTMENT LEVER, PERMANENTLY ATTACHED FLIP-UP LENS CAPS AND DURABLE CARRYING CASE FOR TRANSPORT AROUND YOUR NECK OR ON YOUR WAIST BELT.

### SIDEVIEW 8x21



- User-friendly
- Pocket-sized
- Crisp image
- Slim design
- Soft-touch coating
- Durable body
- Eclipse-M lens caps

8x21 ultra-compact and lightweight porro prism binocular with 8.0x magnification

#	Product Code 22141
+	Magnification 8.0x
A	Field of View 7°
⬆	Weight 190g
Ⓜ	Dimensions 124x99x45mm

### SIDEVIEW 10x21



10x21 ultra-compact and lightweight porro prism binocular with 10.0x magnification

#	Product Code 22142
+	Magnification 10.0x
A	Field of View 6.5°
⬆	Weight 190g
Ⓜ	Dimensions 124x99x45mm

### POINT 8x42



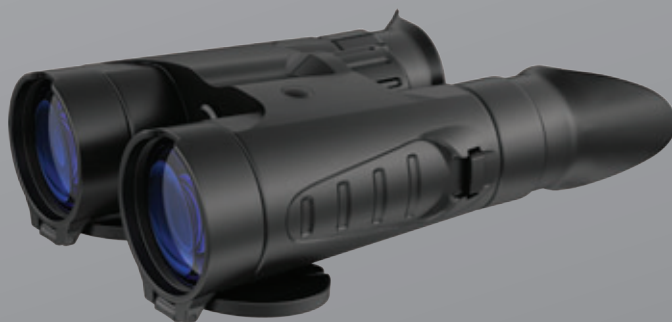
The Point 8x42 have the weight, dimension and power of a binocular optimised for multi-purpose use. A nitrogen-purged optical channel prevents inner cavities of the binocular from fogging in changes of ambient temperature.

Lens caps are attached to the binoculars body which prevents them from being lost and magnets keep the lens caps in place when they are either open or closed.

- Compact roof prism binocular
- Eye relief: 18mm
- Right eye piece dioptre adjustment: +/-5.5
- Close focus distance: 1.3m
- IPX7 IP Rating

#	Product Code 22151
+	Magnification 8.0x
A	Field of View 7.4°
⬆	Weight 640g
Ⓜ	Dimensions 180x128x58mm

### POINT 10x42



The Point 10x42 binocular offer all of the same features found on the Point 8x42 binocular but have a more powerful 10.0x image magnification.

- Compact roof prism binocular
- Eye relief: 15mm
- Right eye piece dioptre adjustment: +/-5.5
- Close focus distance: 1.3m
- IPX7 IP Rating

#	Product Code 22152
+	Magnification 10.0x
A	Field of View 6.5°
⬆	Weight 640g
Ⓜ	Dimensions 178x128x58mm

## POINT DAY OPTICS BINOCULARS

THE POINT SERIES OF BINOCULARS INCLUDES TWO MODELS – 8x42 AND 10x42. THE ROOF PRISM OPTICAL SCHEME ALLOWS DIMENSIONS AND WEIGHT TO BE REDUCED WHICH CONTRIBUTES TO THE BINOCULARS COMPACT AND ATTRACTIVE ERGONOMICS. THE BINOCULARS HOUSING IS MADE OF HIGH QUALITY GLASS REINFORCED PLASTIC AND IS FULLY IPX7 WATERPROOF – COMFORTABLE RUBBER GRIPS HELP AVOID THEM SLIPPING WHEN USED WITH WET HANDS. TRUE COLOR™ MULTICOATED LENS COATINGS PROVIDE BRIGHT, HIGH LIGHT TRANSMISSION IMAGES AND GIVE NATURAL COLOUR REPRODUCTION. THE LENS CAPS ARE



# CRAFT

## DAY WEAPON SCOPES

THE CRAFT RIFLE SCOPES ARE THE FIRST DAY OPTICS RIFLE SCOPES PRODUCED BY YUKON ADVANCED OPTICS.

THESE OPTICAL ZOOM MODELS PROVIDE THE USER WITH VERSATILE MAGNIFICATIONS FOR VARIOUS APPLICATIONS. LOWER MAGNIFICATIONS COMBINED WITH A WIDE FIELD OF VIEW ARE PERFECT FOR SHOOTING A FAST MOVING TARGET AT SHORT AND MIDDLE DISTANCES. HIGHER MAGNIFICATIONS SHOULD BE RESERVED FOR DETAILED TARGET OBSERVATION AND PRECISE LONG-RANGE SHOTS.

THE RETICLE IS LOCATED IN THE REAR FOCAL PLANE WHICH ENSURES CONVENIENT AIMING AND SHOOTING AT BOTH LARGE AND SMALL-SIZED TARGETS AT ANY DISTANCE – REGARDLESS OF MAGNIFICATION, RETICLE SIZE DOES NOT INCREASE AS THE MAGNIFICATION FACTOR GOES UP (SO, THE RETICLE DOES NOT OVERLAP THE TARGET). THE CENTRE OF THE RETICLE IS A RED ILLUMINATED DOT WITH 11 LEVELS OF GRADUAL BRIGHTNESS ADJUSTMENT. WINDAGE/ELEVATION ADJUSTMENTS ARE CARRIED OUT WITH THE HELP OF LARGE TURRETS (SUITABLE FOR OPERATION IN GLOVED HANDS) WITH MARKS ALLOWING THE TURRETS TO BE RETURNED TO THE “ZERO” POSITION.

NITROGEN-FILLED OPTICAL CHANNEL PROTECTS AGAINST FOGGING AND A HIGH GRADE MATT BLACK ANODISED ALUMINIUM BODY ENSURES HIGH WEAR RESISTANCE AND ANTI-GLARE PROPERTIES.

EACH SIGHT IS FITTED WITH NOISELESS FLIP-UP PROTECTIVE LENS AND EYEPiece CAPS WITH A 270° OPENING SPAN (WHEN FULLY OPENED, THE CAPS LIE PARALLEL TO THE OPTICAL AXIS OF THE SIGHT).

THE DAY SCOPES FEATURE RUGGED PROTECTION FEATURES MADE OF A SOFT POLYMER, WHICH HAVE A LARGE RIB AND ARE ABLE TO MINIMISE IMPACT LOAD IN CASE A RIFLE WITH A MOUNTED SIGHT IS KNOCKED OR DROPPED.

## CRAFT 3-12x56



- Eye Piece Dioptre Adjustment: -3/+2
- Fixing Diameter: 30mm
- Adjustment per click: 7mm\100m
- One-piece metal body with anodised coating
- Long eye relief for safe shooting
- High recoil power up to 7000j
- 92% light transmission
- Multicoated lenses ensure maximum light transmission, clarity and precise colour rendering
- Nitrogen-filled optical channel prevents fogging of inner optical parts in case of rapid temperature change
- Flip-up lens and eyepiece caps

#	Product Code <b>23022</b>
+	Magnification <b>3.0-12.0x</b>
A	Field of View <b>5°-1.3°</b>
⚖	Weight <b>740g</b>
📏	Dimensions <b>Length: 387mm</b>
🔋	Batteries <b>1x CR2032</b>

Craft reticle common to both models.

## CRAFT 1.5-6x42



- Eye piece dioptre adjustment: -2.5/+2
- Fixing diameter: 30mm
- Adjustment per click: 7mm\100m
- One-piece metal body with anodised coating
- Long eye relief for safe shooting
- High recoil power up to 7000j
- Multicoated lenses ensure maximum light transmission, clarity and precise colour rendering
- 92% light transmission
- Nitrogen-filled optical channel prevents fogging of inner optical parts in case of rapid temperature change
- Flip-up lens and eyepiece caps

#	Product Code <b>23021</b>
+	Magnification <b>1.5-6.0x</b>
A	Field of View <b>11°-2.8°</b>
⚖	Weight <b>555g</b>
📏	Dimensions <b>Length: 311mm</b>
🔋	Batteries <b>1x CR2032</b>

PERMANENTLY ATTACHED TO THE BINOCULARS BODY PREVENTING THEM FROM BEING LOST AND, UNIQUELY, BUILT-IN MAGNETS KEEP THE CAPS FIXED IN THE OPEN OR CLOSED POSITION. THE NITROGEN-PURGED OPTICAL CHANNEL PREVENTS THE BINOCULAR FROM FOGGING IN CASE OF RAPID AMBIENT TEMPERATURE CHANGE. ERGONOMIC EYECUPS HELP CUT OUT ANY EXTRANEIOUS LIGHT FROM ENTERING THE REAR OF THE OPTICAL CHANNEL. A LARGE CENTRE FOCUS WHEEL ALLOWS RAPID FOCUSING, WITH DIOPTRIC CORRECTION BUILT-IN TO THE RIGHT OPTICAL CHANNEL. A TRIPOD ADAPTOR SOCKET IS BUILT IN TO THE FRONT OF THE BINOCULARS BETWEEN THE LENSES.

THE POINT IS PERFECTLY SUITED FOR A WIDE RANGE OF APPLICATIONS INCLUDING NATURE STUDY, HUNTING, FISHING, SHOOTING, TOURISM, MARINE, LAW ENFORCEMENT, SECURITY ETC.



# EXTEND LRS-1000

## LASER RANGEFINDERS

### EXTEND LRS-1000

The Extend LRS-1000 combines the function of a rangefinder and speed sensor. Featuring optimal functions and ergonomic design, the Extend LRS-1000 is perfectly suited for a wide range of applications. The multicoated optics delivers a bright and sharp image with 6.0x image magnification.



- Long measuring range (1000m)
- High accuracy
- Speed mode
- Scan mode
- Water-resistant
- Compact & lightweight

#	Product Code 27051
⚖	Weight 205g
📏	Dimensions 98x75x54 mm
🔋	Batteries 1x CR2

### DSAS

The DSAS (Directional Sound Amplification System) is a new device for amplifying sound under a wide variety of conditions. Professional quality technical performance, including broad frequency response, high sensitivity and clear audio output is combined with compact dimensions and light weight to provide an audio device that is unique in the industry.



- Sound amplification: 0-66dB
- Frequency response: 500-10,000Hz.
- Line out
- Headphone jack
- Headphones included
- Tripod mount
- Tripod screw to attach to devices with a tripod mount

#	Product Code 27021
⚖	Weight 130g
📏	Dimensions 310x30x45mm
🔋	Batteries 1x CR123A

### DSAS W/WEAVER

This variant of the Yukon DSAS is also supplied with a Weaver mount, allowing it to be fitted to the accessory rails of the NVRS/Sentinel weapon scopes.



- Sound amplification: 0-66dB
- Frequency response: 500-10,000Hz.
- Line out
- Headphone jack
- Headphones included
- Tripod mount
- Tripod screw to attach to devices with a tripod mount

#	Product Code 27022
⚖	Weight 140g
📏	Dimensions 310x30x45mm
🔋	Batteries 1x CR123A

## ACCESSORIES

### SOUND



# ACCESSORIES

## MOUNTS, TRIPODS & BRACKETS

### LIGHTWEIGHT TRIPOD



Small size and weight make this ideal as a travel tripod. The 2-way head makes it good for use with lightweight scopes, binoculars and night scopes as well as digital and compact film cameras.

- Height: 290-435mm

#	Product Code
#	29011
Weight	200g
Dimensions	350x62x62mm (folded)

### UNIVERSAL TRIPOD KIT



A combined kit of the 29011 Lightweight Tripod with an adaptor to convert it into a Car Window Mount. Supplied complete with an arm support strap that can be used in conjunction with the tripod to give extra support when used with high magnification scopes and binoculars.

- Height: 290-435mm

#	Product Code
#	29013
Weight	350g
Dimensions	350x62x62mm (folded)

### CAR WINDOW MOUNT



Ultra compact and lightweight, this unit allows you to fit a lightweight scope, binocular or night scope to a car window to offer extra stability when out in the field. Rubber pads are fitted on both the head and window mount.

#	Product Code
#	29012
Weight	125g
Dimensions	178x105x38mm (folded)

### LANDER L-830 TRIPOD

A lightweight, full height tripod that will accept all scopes up to the 100X.

- Pan & tilt head
- Adjustable centre column
- Quick release lock
- Bubble level
- 3 stage legs
- Tri-brace lock
- Maximum height: 1640mm



Fully extended Lander L-830 Tripod

#	Product Code
#	30010
Weight	1620g
Dimensions	675x128x115mm (Folded)

### HEAVY DUTY TABLE TRIPOD



The Heavy Duty Table Tripod is a strong and robust tripod making it ideal for holding heavy optical equipment.

#	Product Code
#	29014
Weight	646g
Dimensions	375x110x85mm (folded)

### WEAVER TO 1/4" WHITWORTH ADAPTOR

Weaver mount to 1/4" Whitworth screw adaptor.



#	Product Code
#	79071-1
Weight	14g
Dimensions	42x22x12mm

### BINOCULAR L-BRACKET

The L-Bracket adapts Futurus binoculars to fit on a tripod with a 1/4" Whitworth thread.



#	Product Code
#	29041
Weight	64g
Dimensions	77x55x25mm



## ACCESSORIES

### CAMERA ADAPATORS & HEADMOUNT

#### DIGITAL CAMERA ADAPTOR (NVMT)



Offers a simple but effective way of attaching a compact digital camera to most Yukon night vision monoculars.

#	Product Code 29023
⚖	Weight 200g
📏	Dimensions 212x127x104mm

#### DIGITAL CAMERA ADAPTOR (100X)



Offers a simple but effective way of attaching a compact digital camera to the 29031 100X Spotting Scope (Does not fit 29032S).

#	Product Code 29024
⚖	Weight 150g
📏	Dimensions 180x134x85mm

#### HEADMOUNT



Converts any variant of the NVMT Spartan (excluding the 24057 NVMT G2+ 3x50) for use as a hands-free, headmounted monocular goggle. Only recommended when used with 1x24 lens due to reduced neck strain, distance perception and field of view.

#	Product Code 29032
⚖	Weight 258g

#### MPR MOBILE PLAYER/RECORDER

Yukon's MPR (Mobile Player/Recorder) is an ultra-compact and lightweight digital recording device designed to work with the Yukon (Ranger), Newton (Hornet) and Pulsar (Recon) range of hand-held digital night vision monoculars. With its built-in 2"/5cm diagonal LCD screen, the unit can record and playback video in AVI format at one of three optional resolutions via the 70Mb of built-in memory or via a SD memory card (up to 32Gb).



The MPR also comes supplied with a cable that allows playback via a standard TV or LCD monitor with RCA connectors. Cycle recording automatically overwrites older files when the memory is full. A motion detection function automatically activates recording when an object appears in the Field of View of an attached digital unit. The unit also features the capability to pre-select recording time (up to 90 minutes), has automatic shutdown, automatic display power down and a Mini USB-USB 2.0 port for downloading to a computer.



- LCD display: 2in/5cm diagonal hi-res TFT
- Memory: 70Mb built-in/optional SD cards up to 32Gb
- Power: Replaceable, rechargeable Lithium Ion
- 3 optional Recording resolutions
- Video output
- Motion detection function

#	Product Code 27041
⚖	Weight 60g
📏	Dimensions 65x55x17mm

## ACCESSORIES

### VIDEO/IMAGE CAPTURE



# ACCESSORIES

## WEAPON MOUNTS & ACCESSORIES

### RIFLE EYEPIECE



The rifle conversion eyepiece offers extended eye relief and 0.5x image magnification for the NVMT Spartans. Not compatible with waterproof models.

- # Product Code 29061
- # Weight 80g
- # Dimensions 95x50x50mm

### YUKON-1 LASER POINTER W/WEAVER



Can be fixed on to the accessory rail of the NVRS/NVRS-F & Sentinel weapon scopes and hunting weapons that have 7/8" mounting rails, providing extra aiming mark when shooting at night.

- Wavelength: 633nm
- Internal angle adjustment: +/- 2.0°

- # Product Codes 27012
- # Weight 82g with mount & batteries
- # Dimensions 20x20x65mm
- # Batteries 2x A76

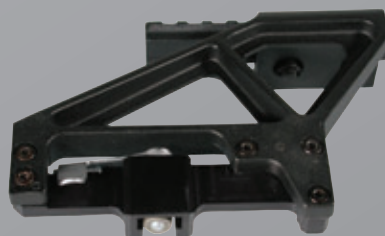
### RIFLE MOUNT



Weaver/9.5-11.5mm weapon mount that attaches to the NVMT Spartan series.

- # Product Code 29043
- # Weight 138g
- # Dimensions 145x50x35mm

### AK SIDE MOUNT ADAPTOR



The AK Side Mount Adaptor is used for mounting NVRS/Sentinel units on AK and SVD-types of rifles.

- # Product Code 29044
- # Weight 232g
- # Dimensions 150x110x40mm

### RIFLE CONVERSION KIT



Optional accessory for NVMT Spartans.

Product Name	Product Code
Rifle Conversion Kit (w/Laser)	29045
Rifle Conversion Kit	29046



# ACCESSORIES

## INFRARED ILLUMINATORS

### IR FLASHLIGHT (NVRS) !



- # Product Code  
29072
- Wavelength  
805nm
- Weight  
230g
- Dimensions  
230x40x43mm
- Batteries  
2x AA

Optional high power 100mW IR illuminator with mount for use with any NVRS or Sentinel Tactical night vision weapon scope. Fits onto the accessory Weaver rails on the top/left of the bodyshell.

### IR FLASHLIGHT (NVMT) !



- # Product Code  
29074
- Wavelength  
805nm
- Weight  
240g
- Dimensions  
230x90x35mm
- Batteries  
2x AA

Optional high power 100mW IR illuminator with mount for use with many night vision monoculars. Screws in to the twin tripod sockets on the scope base.

## TRACKER 2x24 LENS CONVERTER



- # Product Code  
29093
- Magnification  
1.75x
- Weight  
250g
- Dimensions  
53x81x118mm

An optional 1.7x Lens Converter for the 25022 Tracker PRO 2x24, 25023 Tracker LT 2x24 and 25023WP Tracker LT 2x24 WP night vision binoculars. When fitted, the Tracker 2x24 Lens Converter increases image magnification from 2x24 to 3.5x40.

## 1.7x LENS CONVERTER



- # Product Code  
29091
- Magnification  
4.3x
- Weight  
180g
- Dimensions  
76x63mm

An optional lens converter for the 26013T NVRS Tactical 2.5x50, 26014T NVRS-F 2.5x50 and 26015T Sentinel 2.5x50 NV Weapon Scopes that increases standard image magnification from 2.5x to 4.3x.

# ACCESSORIES

## LENS CONVERTERS



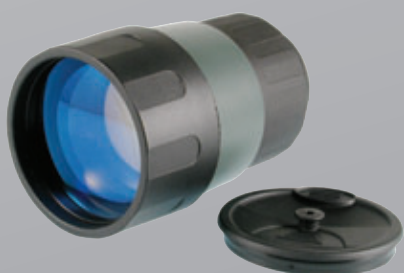
The MTTF (Mean Time To Failure) of any image intensifier tube is based on it's use in starlight ( $10^{-3}$  lux) conditions – any light level above this reduces the tube life at a faster rate. The use of a high power artificial light source - such as an infrared (IR) illuminator or gun lamp with an IR filter – is no exception. It is important that any IR illuminator illuminates the whole area visible to the image intensifier tube. The built-in protection circuits within an image intensifier can only sense illumination levels over the whole surface area of the tube. If you are only illuminating a small percentage of the tube's surface area, the protection circuits cannot sense this and will not protect the tube. Long term exposure to a small area of bright illumination – such as a laser only illuminating the central 10-20% – will result in permanent damage to the tube. This will make any warranty null and void. If you need to narrow the IR illuminators beam width do so for only short periods of time and then widen it again so that the whole tube imaging area is covered. Digital night vision scopes do not suffer from this risk.



# ACCESSORIES

## LENSES

### 4x50 LENS



Optional lens for the NVMT Spartan series that offers 4.0x image magnification.

#	Product Code
	29053
+	Magnification
	4.0x
⚖	Weight
	208g
📏	Dimensions
	92x60x60mm

### 3x42 LENS



Optional lens for the NVMT Spartan series that offers 3.0x image magnification.

#	Product Code
	29052
+	Magnification
	3.0x
⚖	Weight
	218g
📏	Dimensions
	80x56x56mm

### 2x24 LENS



Optional lens for the NVMT Spartan series that offers 2.0x image magnification.

#	Product Code
	29051
+	Magnification
	2.0x
⚖	Weight
	90g
📏	Dimensions
	55x50x50mm

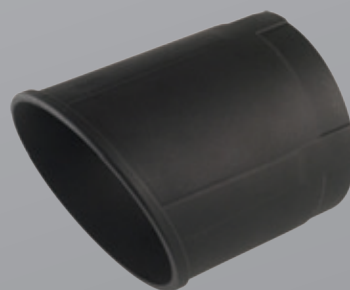
### NVRS WEATHER GUARD



Lens hood for the NVRS/NVRS-F to cut out extraneous light sources and protect lenses from wind and rain.

#	Product Code
	29101
⚖	Weight
	66g
📏	Dimensions
	100x68x68mm

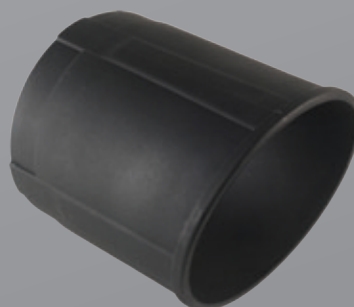
### 50MM WEATHER GUARD



Lens hood for weapon scopes with 50mm front lens to cut out extraneous light sources and protect lenses from wind and rain.

#	Product Code
	29102
⚖	Weight
	60g
📏	Dimensions
	100x68x68mm

### 60MM WEATHER GUARD



Lens hood for weapon scopes with 60mm front lens to cut out extraneous light sources and protect lenses from wind and rain.

#	Product Code
	29103
⚖	Weight
	64g
📏	Dimensions
	100x68x68mm

# ACCESSORIES

## WEATHER GUARDS



# ACCESSORIES COMPATIBLE WITH YUKON ADVANCED OPTICS PRODUCTS

## NIGHT VISION

### Key to compatibility table

- Optional accessory - compatible but already included as part of device/kit
- Optional accessory - compatible
- ▣ Optional accessory - only compatible when used with other parts
- Optional accessory - compatible but NOT recommended
- ⦿ Optional accessory - compatible when used with other parts but NOT recommended

Please note that some accessories may not be compatible with all configurations of a particular product (eg. monoculars when used hand-held rather than attached to a headmount or scope adaptor). Equally, some accessories may not be recommended for the configuration supplied but may be suitable when the product is used in a different configuration (ie. laser illuminators are not recommended for low magnification night vision units because beam angle and field of view respectively are not compatible, but may be suitable if higher magnification lenses are used).

Despite our best efforts to ensure accuracy, this table is a guide only and is no guarantee of compatibility between products. E&OE.

Please contact Thomas Jacks Ltd for further guidance or advice where necessary.

Accessory Page #														Yukon									
				Carry/Storage Case	Instruction Manual	Lens Cloth	Commercial Box/Packaging	9001	9002	9003	9004	9011	24	24	25	25	25	25	25	25	26		
<b>Key to compatibility table</b> ■ Optional accessory - compatible but already included as part of device/kit ▣ Optional accessory - compatible ▣ Optional accessory - only compatible when used with other parts ○ Optional accessory - compatible but NOT recommended ⦿ Optional accessory - compatible when used with other parts but NOT recommended																							
Please note that some accessories may not be compatible with all configurations of a particular product (eg. monoculars when used hand-held rather than attached to a headmount or scope adaptor). Equally, some accessories may not be recommended for the configuration supplied but may be suitable when the product is used in a different configuration (ie. laser illuminators are not recommended for low magnification night vision units because beam angle and field of view respectively are not compatible, but may be suitable if higher magnification lenses are used).																							
Despite our best efforts to ensure accuracy, this table is a guide only and is no guarantee of compatibility between products. E&OE.																							
Please contact Thomas Jacks Ltd for further guidance or advice where necessary.																							
Monoculars	NVMT Spartan 1x24	Gen 1	24124	■	■	■	■			▣			▣	▣				▣	▣	▣	○	▣	
	NVMT Spartan 2x24	Gen 1	24121	■	■	■	■			▣			▣	▣				▣	▣	▣	○	▣	
	NVMT Spartan 2x24 WP	Gen 1	24121WP	■	■	■	■			▣			▣	▣				▣	▣	▣	○		
	NVMT Spartan 3x42	Gen 1	24122	■	■	■	■			▣			▣	▣				▣	▣	▣	○	▣	
	NVMT Spartan 3x42 WP	Gen 1	24122WP	■	■	■	■			▣			▣	▣				▣	▣	▣	○		
	NVMT Spartan 4x50	Gen 1	24127	■	■	■	■			▣			▣	▣				▣	▣	▣	○	▣	
	Patrol 2x24	Gen 1	24081	■	■	■	■		▣				▣	▣				▣	▣	▣	○		
	Patrol-D 3x42	Gen 1	24082	■	■	■	■		▣				▣	▣				▣	▣	▣	○		
	Patrol 4x50	Gen 1	24083	■	■	■	■		▣				▣	▣				▣	▣	▣	○		
	NV 5x60	Gen 1	24065	■	■	■	■						▣	▣				▣	▣	▣	○		
	Exelon 3x50	Gen Super	24101	■	■	■	■			▣			▣	▣				▣	▣	▣	○		
	Exelon 4x50	Gen Super	24102	■	■	■	■			▣			▣	▣				▣	▣	▣	○		
	NVMT Spartan G2+ 3x50	Russian Gen 2+	24057	■	■	■	■			▣			▣	▣				▣	▣	▣	○		
	Ranger 5x42	Digital	28041	■	■	■	■	▣					▣	▣				▣	▣	▣	▣		
	Ranger Pro 5x42	Digital	28046	■	■	■	■	▣					▣	▣				▣	▣	▣	▣		
	Ranger 5x42 MPR Kit	Digital	28041VK	■	■	■	■	▣					▣	▣				▣	▣	▣	▣		
Binoculars	Tracker PRO 2x24	Gen 1	25022	■	■	■	■			▣													
	Tracker LT 2x24	Gen 1	25023	■	■	■	■			▣													
	Tracker LT 2x24 WP	Gen 1	25023WP	■	■	■	■			▣													
	Tracker RX 3.5x40	Gen 1	25024	■	■	■	■			▣													
	Tracker 3x42	Gen 1	25028	■	■	■	■			▣													
Goggles	NVMT Spartan 1x24 Goggle Kit	Gen 1	24125	■	■	■	■			▣			▣	▣				▣	▣	▣	○	■	
	Tracker 1x24 NVG	Gen 1	25025	■	■	■	■			▣												■	
Weapon Scopes	Sentinel Tactical 2.5x50	Gen 1	26015T	■	■	■	■	▣					▣										
	Sentinel Tactical 3x60	Gen 1	26016T	■	■	■	■	▣					▣										
	NVRS Tactical 2.5x50	Gen 1	26013T	■	■	■	■	▣					▣										
	NVRS-F Tactical 2.5x50	Gen 1	26014T	■	■	■	■	▣					▣										
	NVMT Spartan Weapon Kit	Gen 1	26141	■	■	■	■			▣			▣	▣				▣	▣	▣	○		

## ACCESSORIES



# ACCESSORIES COMPATIBLE WITH YUKON ADVANCED OPTICS PRODUCTS

## DAY OPTICS

### Key to compatibility table

- Optional accessory - compatible but already included as part of device/kit
- Optional accessory - compatible
- ▣ Optional accessory - only compatible when used with other parts
- Optional accessory - compatible but NOT recommended
- ⦿ Optional accessory - compatible when used with other parts but NOT recommended

Please note that some accessories may not be compatible with all configurations of a particular product (eg. monoculars when used hand-held rather than attached to a headmount or scope adaptor). Equally, some accessories may not be recommended for the configuration supplied but may be suitable when the product is used in a different configuration (ie. laser illuminators are not recommended for low magnification night vision units because beam angle and field of view respectively are not compatible, but may be suitable if higher magnification lenses are used).

Despite our best efforts to ensure accuracy, this table is a guide only and is no guarantee of compatibility between products. E&OE.

Please contact Thomas Jacks Ltd for further guidance or advice where necessary.

Accessory Page #

#											Yukon																																																																																																																																																																																																																																																																																																																																																																																																																																																																																																																																																																																																																																																																																																																																																																																																																																																																																																																																																																																																																																																																																																																																																																																																																																																																																																																																																																																																																																																																																														



										Pulsar	Cobra Optics	Laserluchs
										29023	Digital Camera Adaptor (NVMT)	26
										29024	Digital Camera Adaptor (100X)	26
										27041	MPR Mobile Player/Recorder	26
										29061	Rifle Eye-piece	27
										29043	Rifle Mount	27
										29045	Rifle Conversion Kit (w/Laser)	27
										29046	Rifle Conversion Kit	27
										27012	Yukon-1 Laser Pointer w/Weaver	27
										29044	AK Side Mount Adaptor	27
										29072	IR Flashlight (NVRS)	28
										29074	IR Flashlight (NVMT)	28
										29093	Tracker 2x24 Lens Converter	28
										29091	1.7x Lens Converter	28
										29051	2x24 Lens	29
										29052	3x42 Lens	29
										29053	4x50 Lens	29
										29101	NVRS Weather Guard	29
										29102	50mm Weather Guard	29
										29103	60mm Weather Guard	29
										79044	Recon Tripod Adaptor	48
										79091	1.7x Lens Converter	49
										79071	IR Flashlight (805)	50
										79076	IR Flashlight (940)	50
										79073	IR Flashlight (L-808)	50
										79102	50mm Weather Guard	51
										79103	60mm Weather Guard	51
										79111	EP53 Battery Pack	51
										79112	EP55 Battery Pack	51
										17044	CRV640 Video Recorder (Newton)	55
										7004	3mm IR Filter Sheet (10x10cm)	83
										7005	3mm IR Filter Sheet (20x20cm)	83
										7006	5mm IR Filter Sheet (10x10cm)	83
										7007	5mm IR Filter Sheet (20x20cm)	83
										7811	150mW IR Laser Illuminator (808nm)	94
										7812	50mW IR Laser Illuminator (850nm)	94
										7813	50mW Pro IR Laser Illuminator (850nm)	95
										7814	50mW Pro IR Laser Illuminator (940nm)	95
										7820	Dimmer Switch	95
										7830-4	Ball Head Mount (Weaver)	95
										7830-6	Weaver to 1/4" Whitworth	95