

ᑭᐱ.ᑭᑎ.ᑭᐱ
Geoffrey M. Standing Bear
Principal Chief

Osage Nation
Office of the Principal Chief

ᑭᐱ.ᑭᑎ.ᑭᐱ ᑕᐱ.ᑕᑎ
Raymond Red Corn
Assistant Principal Chief



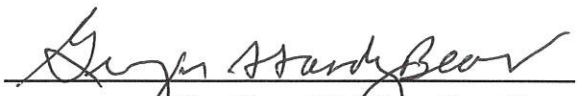
EXECUTIVE ORDER NO. 16-03
Executive Branch Organization

By the authority vested in me as Principal Chief of the Osage Nation by the Constitution of the Osage Nation, I hereby order and direct that all divisions, departments, and programs of the Osage Nation Executive Branch be established and administered in accordance with the attached approved organization chart dated July 15, 2016.

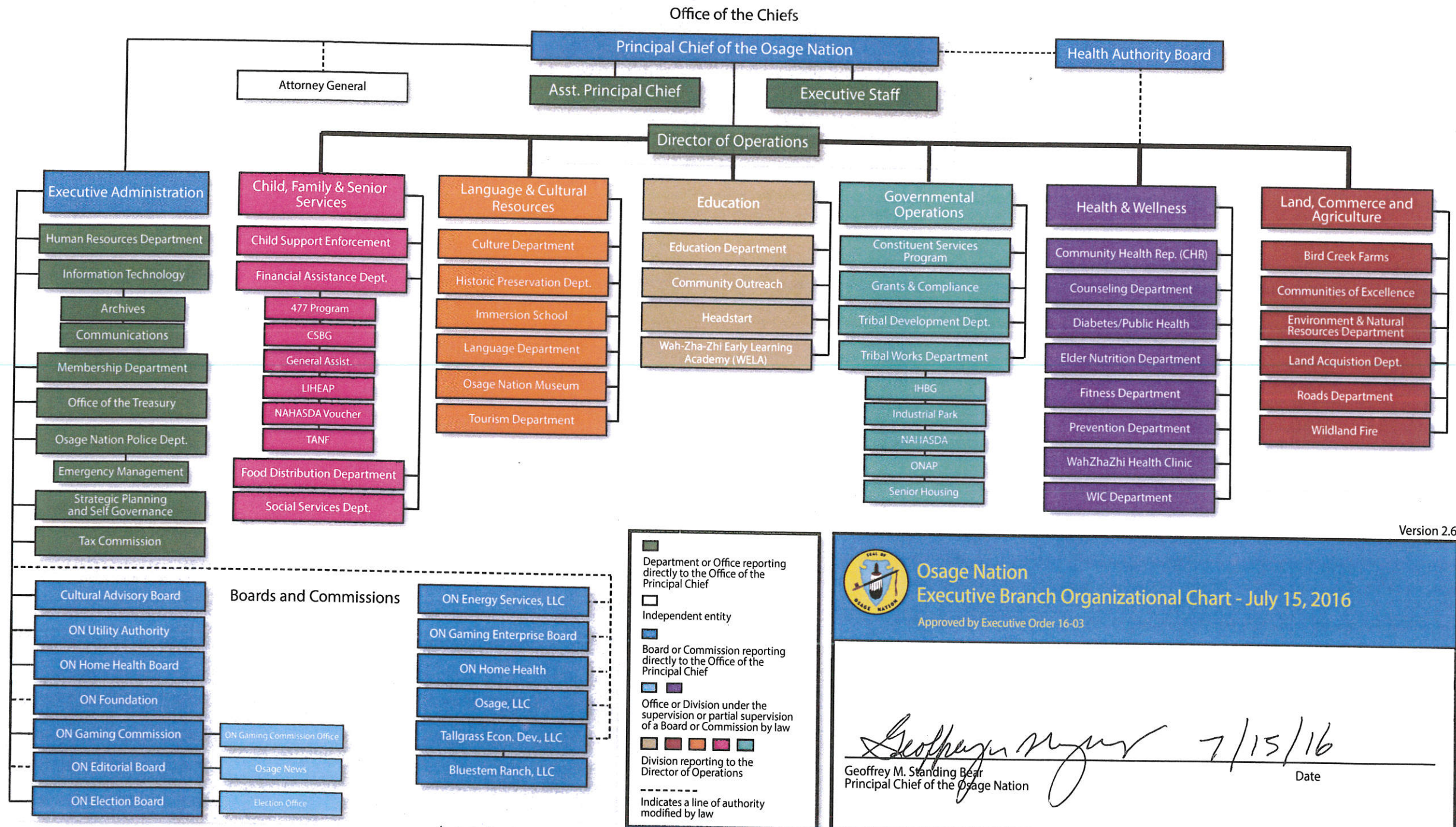
Executive Order No. 15-02 and all prior Executive Directives regarding organization of the Executive Branch are hereby replaced by this Order.

This Order is effective immediately.

Signed this Fifteenth day of July, 2016

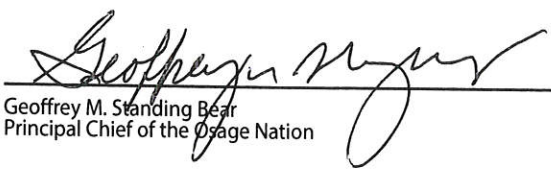


Geoffrey M. Standing Bear
Principal Chief, Osage Nation



Version 2.6

Osage Nation
Executive Branch Organizational Chart - July 15, 2016
 Approved by Executive Order 16-03


 Geoffrey M. Standing Bear
 Principal Chief of the Osage Nation

7/15/16
 Date