

Simply Amazing.



Touchscreens with **PRE-CALIBRATED SENSORS** means no need to be without a unit. Simply order and replace.

LOOK INSIDE FOR

Letter from DicksonOne Product Manager **Page 2**

Automating your Monitoring **Pages 10-11**

Compact Pressure Logger Now With USB **Page 18**

Winter 2013 Catalog

CD261

DICKSON

DICKSON MEANS DATA

And we mean business too. We know that products, processes, buildings, and monitoring application is vital to your business. For that reason, Dickson has been designing and manufacturing reliable data logging devices for over 90 years and continues to do so today.

LETTER FROM DICKSON ONE PRODUCT MANAGER

Greetings!

Last month we discussed our new **DicksonOne** platform. If you missed it, check out our blog at **blog.dicksondata.com**.

This month I wanted to speak to you about our Pre-Calibrated Sensors, or PCS for short. The PCS is a great development aimed at making the calibration process more friendly.

When our Sales Consultants talk to customers about why they don't calibrate their devices the responses are typically one of the following:

- 1 I'm without my logger for too long
- 2 Someone will come to me and do it
- 3 The whole process is too expensive

The PCS speaks to these issues directly. First, a device with a PCS means you don't have to send in your device. Secondly, there's no need to have someone come to your facility. Just order a newly calibrated PCS and once it arrives simply remove the old one and replace it with the new one. Lastly, save time and money by not having to ship the device back to the manufacturer.

Factory calibrations are extremely important. It is the only way to guarantee your device is within the manufacturer's specifications and receive the proper documentation for it. Calibration houses can simply tell you how far off your device is reading, but they can't calibrate a Dickson instrument so that it reads and records correctly over the entire range of the device.

Currently, the PCS is available on the Touchscreens (pg. 5), WiZARD2 (pg. 7), and **DicksonOne** (pgs. 10-11).

For more information visit: **www.DicksonData.com/PCS** or call: **800.323.2448** and a specialist will be happy to help.

Matt McNamara
DicksonOne Product Manager

TABLE OF CONTENTS

Calibrations

Letter from DicksonOne Product Manager 2

Data Loggers

Temperature & Temperature Humidity Display Logger 4
Paperless Touchscreen Chart Recorder 5
Pro Series Data Loggers 6
Compact Data Loggers 7
WiZARD2 Wireless Logging System 7
Report Logger 8
High Temperature Stainless Steel Loggers 8
DicksonOne Monitoring System 10-11

Chart Recorders

8 Inch Temperature Chart Recorder 9
6 Inch Temperature Chart Recorder 9
8 Inch Temperature & Humidity Chart Recorder 12
6 Inch Temperature & Humidity Chart Recorder 13
4 Inch Temperature Chart Recorder 13
3 Inch Temperature Chart Recorder 14
Vaccine Chart Recorder 14
Voltage Chart Recorder 15
Disposable Chart Recorder 15

Thermometers & Indicators

Vaccine Alarm Thermometer 16
Temperature & Humidity Handheld Indicators 16
Infrared Temperature Thermometers 16

Pressure Monitors

8 Inch Pressure Chart Recorder 17
4 Inch Pressure Chart Recorder 17
Pressure Data Loggers 18

Pre-Calibrated Sensors.

No longer do you have to be without your logger while it's calibrating.

- **The PCS is So Simple** - Simply order a new pre-calibrated sensor and swap it with the old one and that's it! You're device is now calibrated again!
- **Don't be Without Your Logger** - Continuously monitor your application; never be without your device!
- **Save Money** - No longer do you need to pay to ship your PCS compatible logger to or from Dickson!

COMPATIBLE WITH:

- **Touchscreens:** FH625, FH635, FT600 (page 5)
- **WiZARD2 (900Mhz):** WT320, WH345 (page 7)
- **DicksonOne:** ENT20, ENH20, WFT20, WFH20 (page 8-9)



Look for this symbol throughout the catalog for compatible products.

Temperature Data Logger

SM300 \$249 Range -4 to 158°F, -20 to 70°C.
Accuracy $\pm 0.8^\circ\text{F}$.

SM320* \$299 Remote Probe. Range with Probe
-300 to 2000°F. Accuracy $\pm 1.8^\circ\text{F}$.

SM325* \$399 Two Remote Probes. Range with Probe
-300 to 2000°F. Accuracy $\pm 1.8^\circ\text{F}$.

SM420 \$499 Remote Probe. Range -50 to 350°F,
-45 to 176°C. Accuracy $\pm 0.5^\circ\text{F}$.



SM325 Temperature Model With
Two Remote Probes

\$299 Add \$99 for 1-Point NIST

Temperature/Humidity Data Logger

Industries & Applications

- Warehouses
- Archives
- Surgical Suites
- Laboratories

TM320 \$299 Range -4 to 158°F, -20 to 70°C. Accuracy $\pm 0.8^\circ\text{F}$.

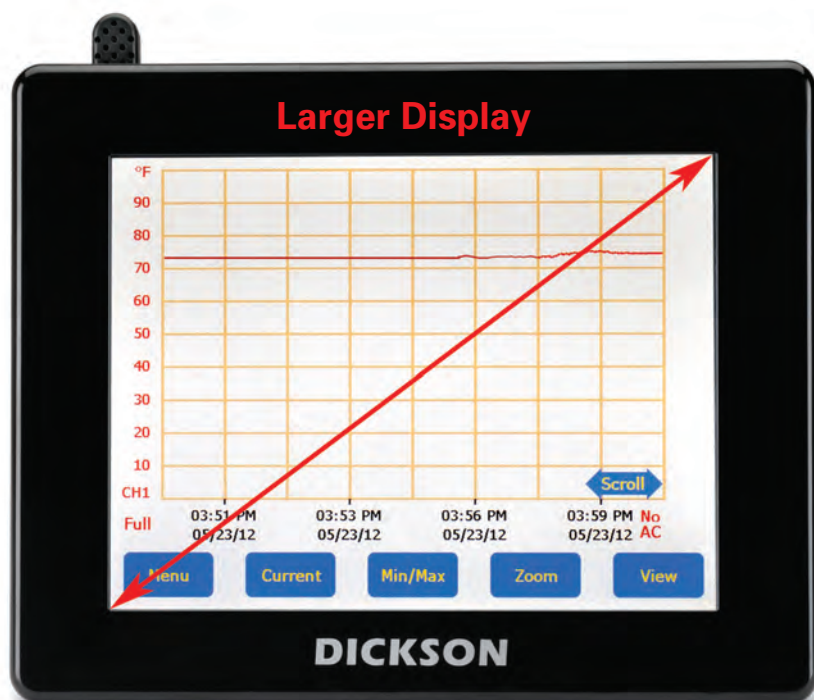
TM325 \$399 Remote Probe. Range -40 to 185°F, -40 to 85°C.
Accuracy $\pm 0.8^\circ\text{F}$.



TM320 Temperature Model

From
\$299 Add \$99 for 1-Point NIST

Not for use over 95% RH. Software required and sold separately. For software and other accessories, please call **800.323.2448** or visit www.DicksonData.com.
*Temp Range using standard K-TC probe: -300 +500°F (A203 probe required for +2000°F range).



Digital Graph Displays Trends

Full control at your fingertips!

- Jumbo 4.9" x 6.4" touchscreen temperature and temperature/humidity logger
- Zoom and scroll at the touch of the screen
- Audible/visual alarms
- USB and FLASH card data download
- Rechargeable battery backup
- No running back to your PC to see data. Everything you need at the touch of a finger!
- Display Lock
- Pre-Calibrated Sensors

\$399 Add \$99 for 1-Point NIST



New Display Locking Capability



Compatible with New Pre-Calibrated Sensors



MODEL	REMOTE PROBE	PROBE TYPE	TEMPERATURE RANGES	ACCURACY	RELAYS	PRICE
TEMPERATURE/HUMIDITY						
FH625	Optional	Temp/RH PCS*	-40°F to 185°F (-40° to 85°C)	±0.8°F	•	\$469
FH635	Optional	Temp/RH PCS*	-40°F to 185°F (-40° to 85°C)	±0.8°F		\$529
TEMPERATURE						
FT600	Optional	Temp PCS*	0 to 122°F (-17° to 50°C)	±0.8°F	•	\$399
FT620	1	KT/C	-300°F to 2000°F (-184° to 1093°C)	±1.8°F		\$429
FT630	2	KT/C	-300°F to 2000°F (-184° to 1093°C)	±1.8°F		\$469
FT625	•	Thermistor	-40°F to 300°F (-40° to 148°C)	±0.8°F		\$429
FT640	1	Thermistor/Glycol	-40°F to 158°F (-40° to 70°C)	±1.2°F		\$449
FT645	2	Thermistor/Glycol	-40°F to 158°F (-40° to 70°C)	±1.2°F		\$469
FT660	•	RTD	-148°F to 350°F (-100° to 176°C)	±0.5°F		\$549

*Pre-Calibrated Sensor

For more information, please visit www.DicksonData.com.

Temperature and Temperature/Humidity Data Logger

Start/Stop for precision reading!

Features

- LCD display of current and MIN/MAX readings
- High-speed USB connectivity
- User-replaceable battery
- Range -4 to 158°F

SP425 \$159 Temperature Logger. Digital Display.

Accuracy $\pm 1.2^{\circ}\text{F}$. Range -4 to 158°F.

TP425 \$249 Temperature and Humidity Logger. Digital Display.

Accuracy $\pm 0.8^{\circ}\text{F}$. Range -4 to 158°F.



SP425 Temperature Model

\$159 Add \$99 for 1-Point NIST



SP125

Temperature and Temperature/Humidity Data Logger

Great for shipping or moving!

Features

- High/low alarm
- High-speed USB connectivity
- User-replaceable battery

SP125 \$119 Temperature Logger. Accuracy $\pm 1.2^{\circ}\text{F}$. Range -10 to 176°F.

SP175 \$229 Temperature Logger with Thermocouple Probe. Accuracy $\pm 1.8^{\circ}\text{F}$. Range -300 to 2000°F.

TP125 \$199 Temperature and Humidity Logger. Accuracy $\pm 0.8^{\circ}\text{F}$. Range -10 to 176°F.

From \$119 Add \$99 for 1-Point NIST

Software required and sold separately. For software and other accessories, please call **800.323.2448** or visit **www.DicksonData.com**.

*Temp Range using standard K-TC probe: -300 +500°F (A203 probe required for +2000°F range).

Compact-Sized Data Loggers

Ideal when space is a concern!

Features

- USB connection
- Economical 12-pack
- Six month battery life
- Ranges -4 to +158°F (-20 to +70°C)
- Accuracy $\pm 1.8^{\circ}\text{F}$ ($\pm 1^{\circ}\text{C}$)

SK550 \$699 Temperature. Pack of twelve.

TK550 \$999 Temperature & Humidity. Pack of twelve.

Software required and sold separately. For software and other accessories, please call **800.323.2448** or visit www.DicksonData.com.



Pack of 12

WIZARD2



Systems Starting at \$498

For the times when DicksonOne isn't an option due to lack of WiFi or Ethernet access points the WiZARD2 system creates its own wireless network.

Features

- Offering email and text alerts for: excursions, low battery, lost communications, and calibration due
- Large monitoring network - Create large wireless network and add wired loggers in the hard to reach areas
- Data comes to you - All data is transmitted wirelessly to one local computer

New calibration options; visit DicksonData.com/pcs for more information

TO GET STARTED

CALL **888.452.4626**

OR VISIT **DICKSONDATA.COM/WIZARD**

Compact-Sized Report Logger

No Software!

\$49

Features

- Reusable
- Connects directly to your computer via USB
- No cables

For an online product demonstration video, go to: www.DicksonData.com/RL



MODEL NUMBER	LOGGING PERIOD	SAMPLE RATE	OPERATING TEMPERATURE RANGE
RL101	1 Day	1 Minute	-40 to 176°F (-40 to 80°C)
RL103	3 Day	1 Minute	-20 to 176°F (-30 to 80°C)
RL107	7 Day	1 Minute	-4 to 176°F (-20 to 80°C)
RL110	10 Day	1 Minute	-4 to 176°F (-20 to 80°C)
RL120	20 Day	2 Minute	32 to 176°F (0 to 80°C)
RL140	40 Day	4 Minute	32 to 176°F (0 to 80°C)
RL175	75 Day	7 Minute	32 to 176°F (0 to 80°C)
RL190	90 Day	9 Minute	32 to 176°F (0 to 80°C)

Stainless Steel Watertight Temperature Data Loggers

New generation of high temperature data logging!

Features

- User-replaceable battery
- USB download capability
- Reinforced probe on the HT225 to prevent breakages
- IP68 rating
- Range: -40 to 257°F

Sample report generated by the compact-sized RL Report Loggers

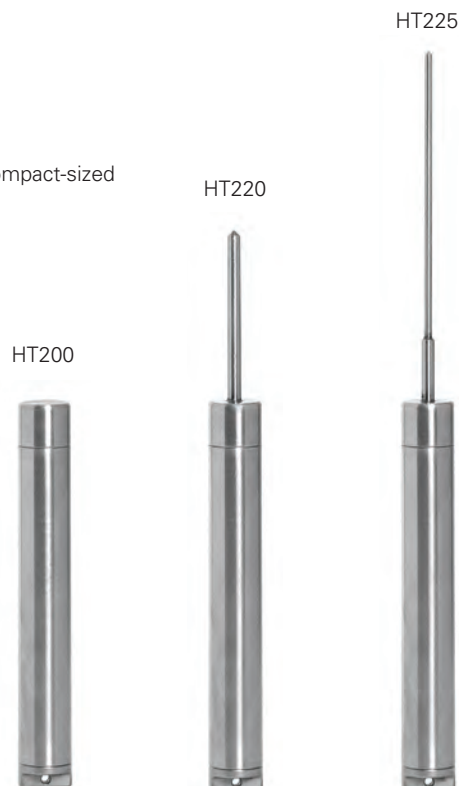
Prices Starting At

\$310

Add \$99 for 1-Point NIST

MODEL	LOGGER LG	LOGGER DIA	PROBE LG	PROBE DIA	PRICE
HT200	5.36"	0.75"			\$310
HT220	7.72"	0.75"	2.36"	0.19"	\$349
HT225	10.24"	0.75"	4.88"	0.11"	\$399

Software required and sold separately. For software and other accessories, please call **800.323.2448** or visit www.DicksonData.com.



8 Inch Temperature Chart Recorder

Easy-to-read chart lets you see temperature details, not just trends!

Industries & Applications

- Ovens
- Warehouses
- Food Processing
- Archives
- Laboratories
- Health - Blood storage, Dialysis Centers, Medical Centers

MODELS AND FEATURES

KT800 \$419 Probe. Battery operated.

KT802 \$469 Probe. Display.

KT803 \$569 Probe. Display. Alarm. **BEST SELLER.**

KT856 \$729 2 Probes. Display. Alarm. Relays.

ALL MODELS HAVE THE FOLLOWING RANGES:

-50 to +50°F/C • -20 to 20°F/C • 0 to 100°F/C

0 to 150°F/C • 0 to 250°F/C • 0 to 500°F/C

0 to 1000°F/C • 0 to 2000°F



KT803



KT622

6 Inch Temperature Chart Recorder

Easy-to-read chart lets you see temperature details, not just trends!

Industries & Applications

- Refrigerators
- Storage
- Clean Rooms
- Laboratories
- Pharmaceuticals
- Medical Equipment

MODELS AND FEATURES

KT621 \$369 Probe.

KT622 \$469 Probe. Display. **BEST SELLER.**

KT625 \$599 Probe. Display. Alarm. Relays.

ALL MODELS HAVE THE FOLLOWING RANGES:

-100 TO 0°F/C • -50 TO 0°F/C • -50 TO +50°F/C

0 TO 50°F/C • 0 TO 100°F/C • 50 TO 100°F/C

0 TO 250°F/C • 0 TO 500°F/C

Charts sold separately. For charts and accessories, please call 800.323.2448 or visit www.DicksonData.com.

DicksonOne

YOUR ENVIRONMENTAL MONITORING ALL IN ONE PLACE

DicksonOne is a SaaS platform that simplifies your temperature and humidity monitoring process. It is a revolutionary system that rethinks the entire environmental monitoring process. In talking to our customers we identified a number of pain points and set out to solve them.

The **Old** Way

PROBLEM

Retrieval of Data: in most cases someone is literally responsible for going around their facility collecting the paper charts from a recorder or downloading the data from a logger.

PROBLEM

Storage of Data: some customers require dedicated rooms for the storage of paper charts or computers that hold large quantities of log files.

PROBLEM

Multiple Location Monitoring: one person cannot adequately and efficiently monitor multiple locations.

The **DicksonOne** Way

SOLUTION

Automation: No longer does an individual have to go retrieve data from all over your facility or multiple facilities. The loggers send the data directly to the cloud.

SOLUTION

Organization: data in the cloud is easier to organize and access. Monitor data offsite simply from any internet enabled device.

SOLUTION

Anytime, Anywhere: Multiple location monitoring is no longer problematic; Within the US or internationally, you can place loggers anywhere and have the data at your fingertips.

To Learn More About This Amazing Product Visit
DicksonOne.com

Starting At Just
\$598

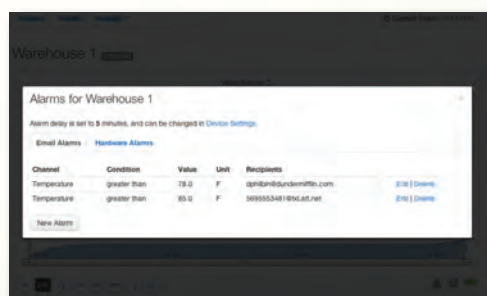
DO **MORE** WITH YOUR DATA



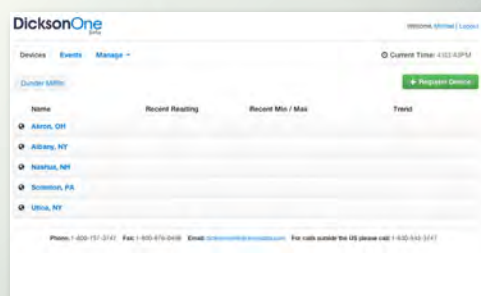
Intuitive Interface: Quick to learn and easy to use, DicksonOne was designed to be a pain free experience that's easy to pick up.



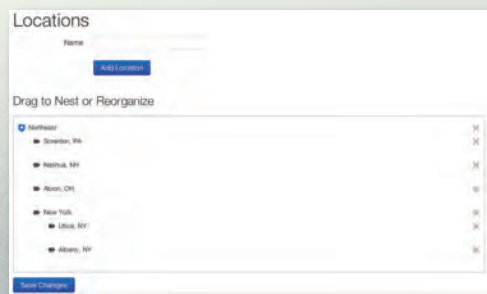
Sharing Data: Whether you need to send a report to your coworker, boss, or an auditor, giving access to the right people is simple.



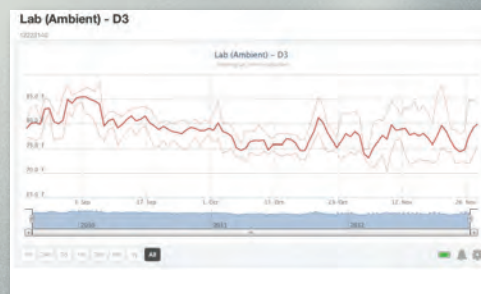
Alarms: You need to know when something isn't right. Setup email and SMS text alerts to as many people as you'd like.



Organization: Keep your loggers, locations, and ultimately your data organized and within reach.



Multi Locations: From small single-building operations to large international corporations with many locations, monitor every critical point from one place!



Historical Data: Never lose that chart or log file again; we'll save all of your data for as long as your account is active so there's no question when the auditor stops by.

For more information visit **DicksonOne.com** or call a system specialist at:
888.452.4626

8 Inch Temperature & Humidity Chart Recorder

Easy-to-read chart lets you see temperature and humidity details, not just trends!

Industries & Applications

- Pharmaceuticals
- Archives
- Laboratories & Clean Rooms
- Warehouses
- Health - Blood storage, Dialysis Centers, Medical Centers

MODELS AND FEATURES

TH800 \$489 Battery operated.

TH802 \$569 Display.

TH803 \$679 Display. Alarm. Probe. **BEST SELLER.**

TH805 \$729 Display. Alarm. Probe. Relays.

Not for use over 95% RH



TH800

RANGES MODELS

32 to 120°F	TH800
0 to 50°C	TH800
-20 to 120°F	TH802, TH803, TH805
-20 to 50°C	TH802, TH803, TH805
40 to 110°F	TH802, TH803, TH805
5 to 40°C	TH802, TH803, TH805
0 to 185°F	TH803, TH805

Charts sold separately. For charts and accessories, please call 800.323.2448 or visit www.DicksonData.com.

Add an Optional Probe to your Temperature Unit!



D617 \$52 10' K-TC Straight Extension Cable



D605 \$73 4" Piercing Probe



D608 \$99 5" Immersion Probe



A203 \$125 6" High Temperature Immersion Probe

6 Inch Temperature & Humidity Chart Recorder

Easy-to-read chart lets you see temperature details, not just trends!

Industries & Applications

- Ovens
- Warehouses
- Food Processing
- Archives
- Laboratories
- Health - Blood storage, Dialysis Centers, Medical Centers

MODELS AND FEATURES

TH621 \$489 Probe.

TH622 \$569 Display.

TH623 \$679 Probe. Display. Alarm. **BEST SELLER.**

ALL MODELS HAVE THE FOLLOWING RANGES:

32 to 100°F • 0 to 50°C



TH623

Charts sold separately. For charts and accessories, please call 800.323.2448 or visit www.DicksonData.com.



SL4100 Temperature Model

Charts sold separately. For charts and accessories, please call 800.323.2448 or visit www.DicksonData.com.

4 Inch Temperature Chart Recorder

Designed with simplicity in mind!

Easy-to-use, battery operated and portable

- Digital display
- 24 hour / 7 day recording time
- Wall mount
- Battery door
- Hinged door

Applications

- Refrigerators
- Warehouses
- Freezers
- Laboratories



\$239 Add \$99 for 1-Point NIST

MODEL	DIGITAL DISPLAY	TEMPERATURE RANGES	PRICE
SL4350	•	-22 to 122°F • -30 to 50°C	\$239
SL4100	•	0 to 100°F • -18 to 37°C	\$239
SL490	•	45 to 90°F • 7 to 32°C	\$239



SC367

3 Inch Mini Temperature Chart Recorder

Ideal when space is a concern!

Applications

- Refrigerators
- Clean Rooms
- Transportation
- Storage

\$219 Add \$99 for 1-Point NIST

MODEL	TEMPERATURE RANGES	PRICE
SC367	-14 to 32°F • -25 to 0°C	\$219
SC377	4 to 50°F • -15 to 10°C	\$219
SC386	22 to 68°F • -5 to 20°C	\$219
SC387	50 to 96°F • 10 to 35°C	\$219
SC397	76 to 122°F • 25 to 50°C	\$219

Charts sold separately. For charts and accessories, please call 800.323.2448 or visit www.DicksonData.com.



VFC70

Vaccine Chart Recorder

VFC70

Features

- Easy-to-read special vaccine chart with circular bands highlighting the acceptable vaccine ranges of 35-46°F, 2-8°C
- LCD display shows current temperature for quick reference
- Fahrenheit/Celsius Selectable

\$259 Add \$99 for 1-Point NIST

Charts sold separately. For charts and accessories please call 800.323.2448 or visit www.DicksonData.com.



ET855

Voltage Chart Recorder

ET855

Features

- Audible/visual alarm
- Large digital display
- Two screw terminal connectors on the back of the instrument for easy connection of the input transmitter

\$659

CHART RANGE	7-DAY CHART	24-HR CHART	31-DAY CHART
0 to +100	C412	C410	C409
0 to +1000	C440	C441	
0 to +200	C436	C456	
0 to +14	C453	C457	
0 to +150	C435	C425	
0 to +300	C431	C422	
-10 to +10	C405	C495	
-150 to +250	C452	C442	

Charts sold separately. For charts and accessories, please call **800.323.2448** or visit **www.DicksonData.com**.



Disposable Recorder

One-time use! This disposable temperature recorder is perfect for monitoring goods while in transit.

Multiple features tailored for shipping needs:

- Failsafe start-up and pull out start tab
- Tamper-proof crimped seal
- Shock and vibration protection
- Low cost shipping alternative

\$49 Each

D301

MODEL	TEMPERATURE RANGES	RECORDING TIME
D301	-20 to 100°F • -30 to 37.5°C	10 Day
D302	-20 to 100°F • -30 to 37.5°C	20 Day
D307	-20 to 100°F • -30 to 37.5°C	40 Day
D309	-20 to 100°F • -30 to 37.5°C	75 Day

Vaccine Alarm Thermometer

MM120/125

Features

- LCD display shows current temperature, MIN/MAX temperatures, uses visual alert when in alarm mode and battery level indicator
- High/Low alarms
- Temperature range -58 to ±122°F (-50 to 50°C)

MM120 \$49 One Probe.
MM125 \$59 Two Probes.

\$59 Add \$99 for 1-Point NIST



MM125 Two Probe Temperature Indicator



TC200



TH300



D182 Infrared



D186 Infrared

Indicators

Quickest readings!

Available Features

- Digital display
- Infrared (IR)
- Stores and recalls 16 readings
- Hold button stores readings for later recall
- K-thermocouple probe

MODEL	TEMPERATURE RANGES	PRICE
TEMPERATURE		
D182	-76 to +932°F	\$60
D186	-67 to 536°F	\$149
TC200	-300 to +2000°F	\$299
TEMPERATURE/HUMIDITY		
TH300	-22 to +185°F • -30 to 185°C	\$399

Add \$99 for 1-Point NIST

8 Inch Pressure Chart Recorder

Large, easy-to-read chart!

Features

- Rugged low-maintenance design features
- Single AA battery power
- Corrosion-resistant case
- 7-day or 24-hour operation
- Keyhole slot for wall mount
- Splashproof case with an IP rating of 66
- 1/4 inch NPT Connector

PW860 \$629 7-day. 0 to 100 PSI.

PW861 \$629 24-hour. 0 to 100 PSI.

PW864 \$629 7-day. 0 to 200 PSI.

PW865 \$629 24-hour. 0 to 200 PSI.

PW866 \$629 7-day. 0 to 300 PSI.

PW867 \$629 24-hour. 0 to 300 PSI.

PW875 \$749 24-hour. 0 to 1000 PSI.



PW875

\$599

Add \$99 for 1-Point NIST

4 Inch Pressure Chart Recorder

Compact and durable design!

Features

- Operates up to one full year on a single AA battery
- 1/4 inch NPT connection
- For applications where splashproof IP rating is not required
- 7-day or 24-hour selectable

PW470 \$449 0 to 100 PSI.

PW474 \$449 0 to 200 PSI.

PW476 \$449 0 to 300 PSI.

PW479 \$449 0 to 500 PSI.



PW470

\$449

Add \$99 for 1-Point NIST

Charts sold separately. For charts and accessories, please call 800.323.2448 or visit www.DicksonData.com.

Pressure Data Logger

User-friendly features!

- One-second sampling rate
- User-replaceable battery
- Pressure sensor includes built-in diaphragm seal
- Display, USB connectivity, FLASH memory downloads
- IP68 case
- Delayed start - start logging once unit is in place

- A.** Digital display
- B.** USB
- C.** FLASH memory card
- D.** Battery
- E.** Splashproof case

PR125 \$499 Range 0 to 100 PSI.

PR325 \$499 Range 0 to 300 PSI.

PR525 \$599 Range 0 to 500 PSI.

\$499 Add \$99 for 1-Point NIST



PR325



Rugged Utility Pressure Data Logger

Compact and discreet!

This data logger fits in toolboxes, tight corners or in wide open spaces without attracting attention. Built for real-world water and gas pressure monitoring.

- Water resistant case
- 3 year battery
- Unobtrusive design
- Fits easily in a toolbox
- Pressure sensor includes built in diaphragm seal.
- USB Connection

PR150 \$449 0-100 PSI

PR350 \$449 0-300 PSI

ALL NEW

Fast, USB Downloads!

\$499 Add \$99 for 1-Point NIST

Software required and sold separately. For more information, please visit www.DicksonData.com.

The Perfect Choice.

Versatility and Ease-Of-Use make this chart recorder a Dickson favorite.

The TH803 is one of our best selling chart recorders. Offering the highest data resolution, a digital display, Audio and Visual Alarms, as well as a remote probe it is the perfect choice for many applications.

For more information on this model and others like it see pages 11-14.

- 10 ft remote probe
- Battery Backup
- 24-Hour, 7-Day, or 31-Day Charts available
- Temperature Accuracy of $\pm 1.8^{\circ}\text{F}$ ($\pm 1^{\circ}\text{C}$)
- Humidity Accuracy of $\pm 3\%$
- Wall Mountable



Dickson Is More Than Print!

Dickson has a growing collection of great videos on:

- Product Introductions and Overviews
- Application Showcases
- How To's

Check out all our videos at www.youtube.com/dicksondata



Product Highlights



Applications



Instructional



Have an idea for a video? Want us to highlight your application? Email marketing@dicksondata.com for details!

DICKSON

Dickson
930 South Westwood Avenue
Addison, Illinois 60101-4917

800 323 2448 tel
800 676 0498 fax
www.DicksonData.com

PRSR.T. STD
U.S. Postage
PAID
The Dickson
Company

WE'RE READY TO TAKE YOUR ORDER!

1-800-323-2448 or online at www.DicksonData.com



DicksonOne

Automate your temperature and humidity monitoring processes by moving the process to the cloud. Dickson's cloud-based DicksonOne SaaS simplifies the monitoring process and puts you in control.

See Pages 10-11 for more information

Starting At Just

\$598



Pre-Calibrated Sensor

- Don't be without your logger while it is calibrating
- Simply replace your old PCS with a new one and you're now calibrated
- Compatible with New Touchscreen and WiZARD2 models as well as our all new DicksonOne (pages 8 & 9)

Visit dicksondata.com/pcs for more information

All prices are subject to change without notice. In the event of a printing error, Dickson reserves the right to charge the correct price.
All shipments ship 2nd day unless otherwise requested.