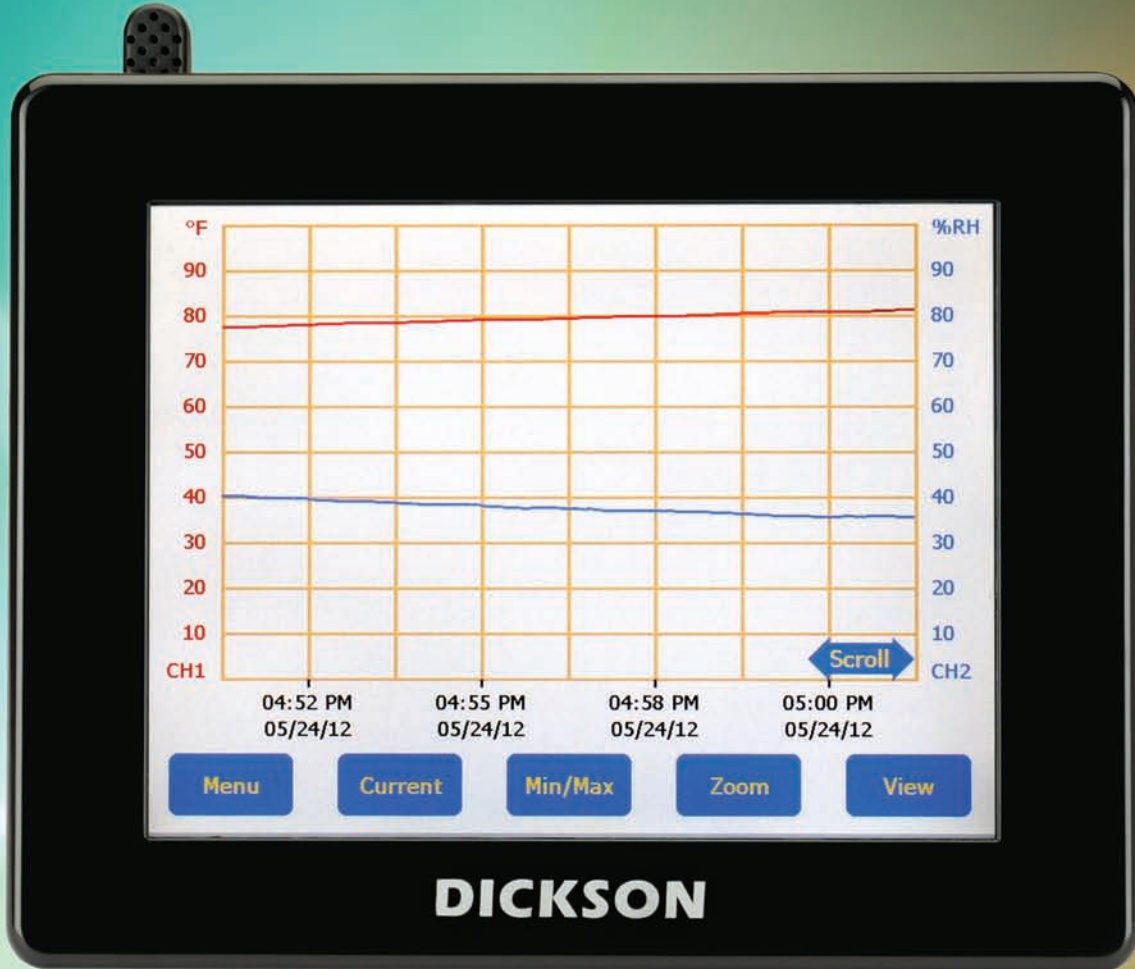


New Touchscreen Loggers

Bigger. Better. More Features.



For more information on Dickson's New Touchscreen Loggers See page 5

The Perfect Choice.

Versatility and Ease-Of-Use make this chart recorder a Dickson favorite.

The TH803 is one of our best selling chart recorders. Offering the highest data resolution, a digital display, Audio and Visual Alarms, as well as a remote probe it is the perfect choice for many applications.

For more information on this model and others like it see pages 11-14.

- 10 ft remote probe
- Battery Backup
- 24-Hour, 7-Day, or 31-Day Charts available
- Temperature Accuracy of +/- 1.8F (+/- 1C)
- Humidity Accuracy of +/- 3%
- Wall Mountable



Temperature Data Logger

SM300 *\$249 Range -4 to 158°F, -20 to 70°C. Accuracy ±0.8°F.

SM320* \$299 Remote Probe. Range with Probe -300 to 2000°F. Accuracy ±1.8°F.

SM325* \$399 Two Remote Probes. Range with Probe -300 to 2000°F. Accuracy ±1.8°F.

SM420 *\$499 Remote Probe. Range -50 to 350°F, -45 to 176°C. Accuracy ±0.5°F.



\$299 Add \$99 for 1-Point NIST

SM320 Temperature Model With Remote Probe

Temperature/Humidity Data Logger

Industries & Applications

- Warehouses
- Archives
- Surgical Suites
- Laboratories

TM320 *\$299 Range -4 to 158°F, -20 to 70°C. Accuracy ±0.8°F.

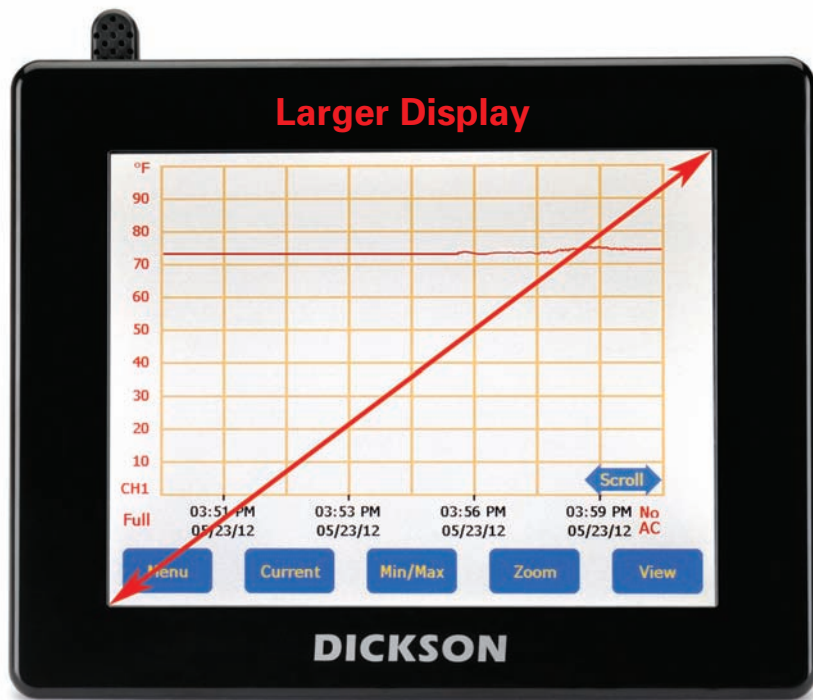
TM325 *\$399 Remote Probe. Range -40 to 185°F, -40 to 85°C. Accuracy ±0.8°F.



From **\$299** Add \$99 for 1-Point NIST

TM325 Temperature Model With Remote Probe

Not for use over 95% RH. Software required and sold separately. For software and other accessories, please call 800.323.2448 or visit www.DicksonData.com.
*Temp Range using standard K-TC probe: -300 +500°F (A203 probe required for +2000°F range).



Digital Graph Displays Trends

Full control at your fingertips!

- Jumbo 4.9" x 6.4" touchscreen temperature and temperature/humidity logger
- Zoom and scroll at the touch of the screen
- Audible/visual alarms
- USB and FLASH card data download
- Rechargeable battery backup
- No running back to your PC to see data. Everything you need at the touch of a finger!
- Display Lock
- Pre-Calibrated Sensors

\$299 Add \$99 for 1-Point NIST



New Display Locking Capability



Compatible with New Pre-Calibrated Sensors

MODEL	REMOTE PROBE	PROBE TYPE	TEMPERATURE RANGES	ACCURACY	RELAYS	PRICE
TEMPERATURE/HUMIDITY						
FH625	Optional	Temp/RH PCS*	-40°F to 185°F (-40° to 85°C)	±0.8°F		\$469
FH635	Optional	Temp/RH PCS*	-40°F to 185°F (-40° to 85°C)	±0.8°F	•	\$529
TEMPERATURE						
FT600	Optional	Temp PCS*	0 to 122°F (-17° to 50°C)	±0.8°F		\$399
FT620	1	KT/C	-300°F to 2000°F (-184° to 1093°C)	±1.8°F		\$429
FT630	2	KT/C	-300°F to 2000°F (-184° to 1093°C)	±1.8°F	•	\$469
FT625	•	Thermistor	-40°F to 300°F (-40° to 148°C)	±0.8°F		\$429
FT640	1	Thermistor/Glycol	-40°F to 158°F (-40° to 70°C)	±1.2°F		\$449
FT645	2	Thermistor/Glycol	-40°F to 158°F (-40° to 70°C)	±1.2°F		\$469
FT660	•	RTD	-148°F to 350°F (-100° to 176°C)	±0.5°F		\$549

*Pre-Calibrated Sensor

For more information, please visit www.DicksonData.com.

Temperature and Temperature/Humidity Data Logger

Start/Stop for precision reading!

Features

- LCD display of current and MIN/MAX readings
- High-speed USB connectivity
- User-replaceable battery
- Range -4 to 158°F

SP425 \$159 Temperature Logger. Digital Display. Accuracy ±1.2°F. Range -4 to 158°F.

TP425 \$249 Temperature and Humidity Logger. Digital Display. Accuracy ±0.8°F. Range -4 to 158°F.



SP425 Temperature Model

\$159 Add \$99 for 1-Point NIST



SP125

Temperature and Temperature/Humidity Data Logger

Great for shipping or moving!

Features

- High/low alarm
- High-speed USB connectivity
- User-replaceable battery

SP125 \$119 Temperature Logger. Accuracy ±1.2°F. Range -10 to 176°F.

SP175 \$229 Temperature Logger with Thermocouple Probe. Accuracy ±1.8°F. Range -300 to 2000°F.

TP125 \$199 Temperature and Humidity Logger. Accuracy ±0.8°F. Range -10 to 176°F.

From \$119 Add \$99 for 1-Point NIST

Software required and sold separately. For software and other accessories, please call **800.323.2448** or visit **www.DicksonData.com**.

*Temp Range using standard K-TC probe: -300 +500°F (A203 probe required for +2000°F range).

Compact-Sized Data Loggers

Ideal when space is a concern!

Features

- USB connection
- Economical 12-pack
- Six month battery life
- Ranges -4 to +158°F (-20 to +70°C)
- Accuracy ±1.8°F (±1°C)

SK550 \$699 Temperature. Pack of twelve.

TK550 \$999 Temperature & Humidity. Pack of twelve.

Software required and sold separately. For software and other accessories, please call **800.323.2448** or visit **www.DicksonData.com**.



Dickson Is More Than Print!

Dickson has a growing collection of great videos on:

- Product Introductions and Overviews
- Application Showcases
- How To's

Check out all our videos at www.youtube.com/dicksondata



Product Highlights



Applications



Instructional



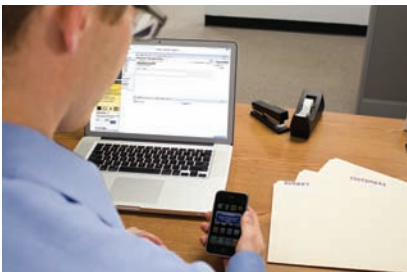
Have an idea for a video? Want us to highlight your application? Email marketing@dicksondata.com for details!

WⁱZARD² Simple, scalable, wireless data logging.



New calibration options;
visit DicksonData.com/pcs for more information

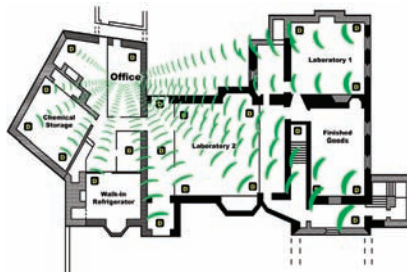
Systems Starting at
\$498



• Text and Email Alerts

Receive emails and/or text messages for:

- Excursions
- Low battery
- Lost communication
- Calibration due



• Large Monitoring Network

Create a large wireless network of loggers and add wired loggers when you have those hard to reach areas.



• Data Comes To You

No longer do you need to waste time running from logger to logger or building to building collecting all of your readings. Have all your data come back to one centralized computer and view the data across your network.

Ethernet Temperature Data Logger

Create a scalable monitoring network!

Features

- Email and Text alerts available
- Eliminates the need to change charts and pens
- Data automatically downloaded to your computer wirelessly
- Loggers continue to log in the event of a power outage

These loggers, while wired, are compatible with the WIZARD2 monitoring system and software. Use them in conjunction with your WIZARD2 system or without! They allow you to monitor locations that would have previously been cost prohibitive to monitor wirelessly.



WT540

\$399 Add \$99 for 1-Point NIST

Ethernet Temperature & Humidity Data Logger

\$399 Add \$99 for 1-Point NIST

WH545



To speak with a system specialist about an application, product, or other concern please call:

888.452.4626



Ready to build your system? Visit:

DicksonData.com/wizard

Compact-Sized Report Logger

No Software!

\$49

Features

- Reusable
- Connects directly to your computer via USB
- No cables

For an online product demonstration video, go to: www.DicksonData.com/RL



MODEL NUMBER	LOGGING PERIOD	SAMPLE RATE	OPERATING TEMPERATURE RANGE
RL101	1 Day	1 Minute	-40 to 176°F (-40 to 80°C)
RL103	3 Day	1 Minute	-20 to 176°F (-30 to 80°C)
RL107	7 Day	1 Minute	-4 to 176°F (-20 to 80°C)
RL110	10 Day	1 Minute	-4 to 176°F (-20 to 80°C)
RL120	20 Day	2 Minute	32 to 176°F (0 to 80°C)
RL140	40 Day	4 Minute	32 to 176°F (0 to 80°C)
RL175	75 Day	7 Minute	32 to 176°F (0 to 80°C)
RL190	90 Day	9 Minute	32 to 176°F (0 to 80°C)

Stainless Steel Watertight Temperature Data Loggers

New generation of high temperature data logging!

Sample report generated by the compact-sized RL Report Loggers

Features

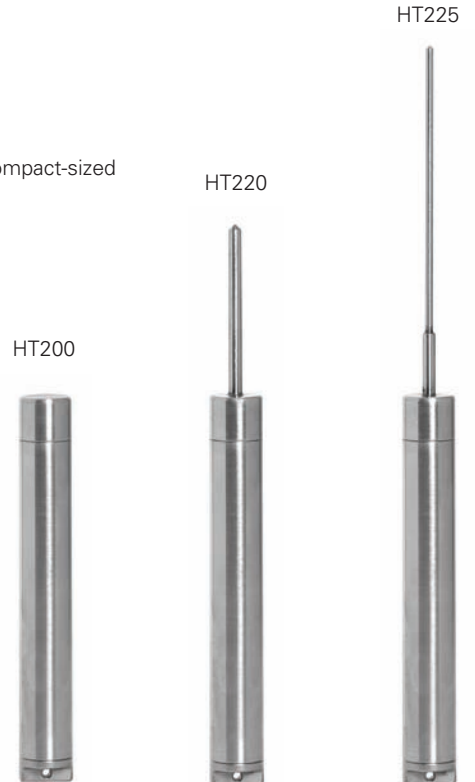
- User-replaceable battery
- USB download capability
- Reinforced probe on the HT225 to prevent breakages
- IP68 rating
- Range: -40 to 257°F

Prices Starting At

\$310 Add \$99 for 1-Point NIST

MODEL	LOGGER LG	LOGGER DIA	PROBE LG	PROBE DIA	PRICE
HT200	5.36"	0.75"			\$310
HT220	7.72"	0.75"	2.36"	0.19"	\$349
HT225	10.24"	0.75"	4.88"	0.11"	\$399

Software required and sold separately. For software and other accessories, please call **800.323.2448** or visit www.DicksonData.com.



8 Inch Temperature Chart Recorder

Easy-to-read chart lets you see temperature details, not just trends!

Industries & Applications

- Ovens
- Warehouses
- Food Processing
- Archives
- Laboratories
- Health - Blood storage, Dialysis Centers, Medical Centers

MODELS AND FEATURES

KT800 \$419 Probe. Battery operated.

KT802 \$469 Probe. Display.

KT803 \$569 Probe. Display. Alarm.

KT856 \$729 2 Probes. Display. Alarm. Relays.

ALL MODELS HAVE THE FOLLOWING RANGES:

-50 to +50°F/C • -20 to 20°F/C • 0 to 100°F/C
 0 to 150°F/C • 0 to 250°F/C • 0 to 500°F/C
 0 to 1000°F/C • 0 to 2000°F



KT803



KT622

6 Inch Temperature Chart Recorder

Easy-to-read chart lets you see temperature details, not just trends!

Industries & Applications

- Refrigerators
- Storage
- Clean Rooms
- Laboratories
- Pharmaceuticals
- Medical Equipment

MODELS AND FEATURES

KT621 \$369 Probe.

KT622 \$469 Probe. Display.

KT625 \$599 Probe. Display. Alarm. Relays.

ALL MODELS HAVE THE FOLLOWING RANGES:

-100 TO 0°F/C • -50 TO 0°F/C • -50 TO +50°F/C
 0 TO 50°F/C • 0 TO 100°F/C • 50 TO 100°F/C
 0 TO 250°F/C • 0 TO 500°F/C

Charts sold separately. For charts and accessories, please call 800.323.2448 or visit www.DicksonData.com.

8 Inch Temperature & Humidity Chart Recorder

Easy-to-read chart lets you see temperature and humidity details, not just trends!

Industries & Applications

- Pharmaceuticals
- Archives
- Laboratories & Clean Rooms
- Warehouses
- Health - Blood storage, Dialysis Centers, Medical Centers

MODELS AND FEATURES

TH800 \$489 Battery operated.

TH802 \$569 Display.

TH803 \$679 Display. Alarm. Probe.

TH805 \$729 Display. Alarm. Probe. Relays.

Not for use over 95% RH



TH803

RANGES	MODELS
32 to 120°F	TH800
0 to 50°C	TH800
-20 to 120°F	TH802, TH803, TH805
-20 to 50°C	TH802, TH803, TH805
40 to 110°F	TH802, TH803, TH805
5 to 40°C	TH802, TH803, TH805
0 to 185°F	TH803, TH805

Charts sold separately. For charts and accessories, please call 800.323.2448 or visit www.DicksonData.com.

Add an Optional Probe to your Temperature Unit!



D617 \$52 10' K-TC Straight Extension Cable



D605 \$73 4" Piercing Probe



D608 \$99 5" Immersion Probe



A203 \$125 6" High Temperature Immersion Probe

6 Inch Temperature & Humidity Chart Recorder

Easy-to-read chart lets you see temperature details, not just trends!

Industries & Applications

- Ovens
- Warehouses
- Food Processing
- Archives
- Laboratories
- Health - Blood storage, Dialysis Centers, Medical Centers

MODELS AND FEATURES

TH621 \$489 Probe.

TH622 \$569 Display.

TH623 \$679 Probe, Display, Alarm.

ALL MODELS HAVE THE FOLLOWING RANGES:

32 to 100°F • 0 to 50°C



TH623

Charts sold separately. For charts and accessories, please call 800.323.2448 or visit www.DicksonData.com.



SL4100 Temperature Model

Charts sold separately. For charts and accessories, please call 800.323.2448 or visit www.DicksonData.com.

4 Inch Temperature Chart Recorder

Designed with simplicity in mind!

Easy-to-use, battery operated and portable

- Digital display
- 24 hour / 7 day recording time
- Wall mount
- Battery door
- Hinged door

Applications

- Refrigerators
- Warehouses
- Freezers
- Laboratories



\$239 Add \$99 for 1-Point NIST

MODEL	DIGITAL DISPLAY	TEMPERATURE RANGES	PRICE
SL4350	•	-22 to 122°F	\$239
SL4100	•	0 to 100°F	\$239
SL490	•	45 to 90°F	\$239
SK4350		-22 to 122°F	\$239
SK4100		0 to 100°F	\$239



SC367

3 Inch Mini Temperature Chart Recorder

Ideal when space is a concern!

Applications

- Refrigerators
- Clean Rooms
- Transportation
- Storage

\$219 Add \$99 for 1-Point NIST

MODEL	TEMPERATURE RANGES	PRICE
SC367	-14 to 32°F • -25 to 0°C	\$219
SC377	4 to 50°F • -15 to 10°C	\$219
SC386	22 to 68°F • -5 to 20°C	\$219
SC387	50 to 96°F • 10 to 35°C	\$219
SC397	76 to 122°F • 25 to 50°C	\$219

Charts sold separately. For charts and accessories, please call 800.323.2448 or visit www.DicksonData.com.



VFC70

Vaccine Chart Recorder

VFC70

Features

- Easy-to-read special vaccine chart with circular bands highlighting the acceptable vaccine ranges of 35-46°F, 2-8°C
- LCD display shows current temperature for quick reference
- Fahrenheit/Celsius Selectable

\$259 Add \$99 for 1-Point NIST

Charts sold separately. For charts and accessories please call 800.323.2448 or visit www.DicksonData.com.

Voltage Chart Recorder



ET855

ET855

Features

- Audible/visual alarm
- Large digital display
- Two screw terminal connectors on the back of the instrument for easy connection of the input transmitter

\$659

CHART RANGE	7-DAY CHART	24-HR CHART	31-DAY CHART
0 to +100	C412	C410	C409
0 to +1000	C440	C441	
0 to +200	C436	C456	
0 to +14	C453	C457	
0 to +150	C435	C425	
0 to +300	C431	C422	
-10 to +10	C405	C495	
-150 to +250	C452	C442	

Charts sold separately. For charts and accessories, please call **800.323.2448** or visit www.DicksonData.com.



Disposable Recorder

One-time use! This disposable temperature recorder is perfect for monitoring goods while in transit.

Multiple features tailored for shipping needs:

- Failsafe start-up and pull out start tab
- Tamper-proof crimped seal
- Shock and vibration protection
- Low cost shipping alternative

\$49 Each

D301

MODEL	TEMPERATURE RANGES	RECORDING TIME
D301	-20 to 100°F • -30 to 37.5°C	10 Day
D302	-20 to 100°F • -30 to 37.5°C	20 Day
D307	-20 to 100°F • -30 to 37.5°C	40 Day
D309	-20 to 100°F • -30 to 37.5°C	75 Day

Vaccine Alarm Thermometer

MM120/125

Features

- LCD display shows current temperature, MIN/MAX temperatures, uses visual alert when in alarm mode and battery level indicator
- High/Low alarms
- Temperature range -58 to ±122°F (-50 to 50°C)

MM120 \$49 One Probe.

MM125 \$59 Two Probes.

\$59

Add \$99 for 1-Point NIST



MM125 Two Probe Temperature Indicator



TC200



TH300

Indicators

Quickest readings!

Available Features

- Digital display
- Infrared (IR)
- Stores and recalls 16 readings
- Hold button stores readings for later recall
- K-thermocouple probe



D182 Infrared



D186 Infrared

MODEL	TEMPERATURE RANGES	PRICE
TEMPERATURE		
D182	-76 to +932°F	\$60
D186	-67 to 536°F	\$149
TC200	-300 to +2000°F	\$299
TEMPERATURE/HUMIDITY		
TH300	-22 to +185°F • -30 to 185°C	\$399

Add \$99 for 1-Point NIST

8 Inch Pressure Chart Recorder

Large, easy-to-read chart!

Features

- Rugged low-maintenance design features
- Single AA battery power
- Corrosion-resistant case
- 7-day or 24-hour operation
- Keyhole slot for wall mount
- Splashproof case with an IP rating of 66
- 1/4 inch NPT Connector

PW860 \$629 7-day. 0 to 100 PSI.

PW861 \$629 24-hour. 0 to 100 PSI.

PW864 \$629 7-day. 0 to 200 PSI.

PW865 \$629 24-hour. 0 to 200 PSI.

PW866 \$629 7-day. 0 to 300 PSI.

PW867 \$629 24-hour. 0 to 300 PSI.

PW875 \$749 24-hour. 0 to 1000 PSI.



PW875

\$599

Add \$99 for 1-Point NIST



4 Inch Pressure Chart Recorder

Compact and durable design!

Features

- Operates up to one full year on a single AA battery
- 1/4 inch NPT connection
- For applications where splashproof IP rating is not required
- 7-day or 24-hour selectable

PW470 \$449 0 to 100 PSI.

PW474 \$449 0 to 200 PSI.

PW476 \$449 0 to 300 PSI.

PW479 \$449 0 to 500 PSI.



PW470

\$449

Add \$99 for 1-Point NIST

Charts sold separately. For charts and accessories, please call 800.323.2448 or visit www.DicksonData.com.

Pressure Data Logger

User-friendly features!

- One-second sampling rate
- User-replaceable battery
- Pressure sensor includes built-in diaphragm seal
- Display, USB connectivity, FLASH memory downloads
- IP68 case
- Delayed start - start logging once unit is in place

- A.** Digital display
- B.** USB
- C.** FLASH memory card
- D.** Battery
- E.** Splashproof case

PR125 \$499 Range 0 to 100 PSI.

PR325 \$499 Range 0 to 300 PSI.

PR525 \$599 Range 0 to 500 PSI.

\$499 Add \$99 for 1-Point NIST



PR325

Rugged Utility Pressure Data Logger

Compact and discreet!

This data logger fits in toolboxes, tight corners or in wide open spaces without attracting attention. Built for real-world water and gas pressure monitoring.

- Water resistant case
- 3 year battery
- Unobtrusive design
- Fits easily in a toolbox
- Pressure sensor includes built in diaphragm seal.

PR100 \$449 0-100 PSI

PR300 \$449 0-300 PSI

\$499 Add \$99 for 1-Point NIST



Software required and sold separately. For more information, please visit www.DicksonData.com.



Featured Application: Pre-Calibrated Sensors

As we've been discussing in our featured articles every month (page 2), calibrations are very important to ensuring accurate temperature monitoring. Often times you may procrastinate on sending a unit in for calibration because it means being without your unit(s) while they are gone.

Our new devices eliminate the need to send in a device to be recalibrated. Ordering a Pre-Calibrated Sensor for your device is quick, easy, and very cost effective. If you have a product that accepts Pre-Calibrated Sensors, simply go to DicksonData.com/pcs for more information and to get started.

Pre-Calibrated Sensors can be used with or without an extension cables and are available on select temperature and temperature/humidity models.

Touchscreens and WiZARD2 Systems



The new touchscreens (page 5) and the newest version of WiZARD2 (page 8) are now compatible with Pre-Calibrated sensors. Visit DicksonData.com/pcs for more information on the sensors

DICKSON

Dickson
930 South Westwood Avenue
Addison, Illinois 60101-4917

800 323 2448 tel
800 676 0498 fax
www.DicksonData.com

PRSR.T. STD.
U.S. Postage
PAID
The Dickson
Company

WE'RE READY TO TAKE YOUR ORDER!

1-800-323-2448 or online at www.DicksonData.com



Application Focus: Pre-Calibrated Sensors

See Page 19 for case study

New Pre-Calibrated Sensors mean you no longer have to send in your instrument for calibration.

Text and Email Alerts

Receive emails and/or text messages for:

- Excursions
- Low battery
- Lost communication
- Calibration due



To speak with a system specialist about an application, product, or other concern please call:

888.452.4626

All prices are subject to change without notice. In the event of a printing error, Dickson reserves the right to charge the correct price.
All shipments ship 2nd day unless otherwise requested.

