

# DicksonOne

Your environmental monitoring all in one place.



**LOOK INSIDE FOR**

Replaceable Sensors **Page 2**

DicksonOne **Pages 10-11**

Calibrations **Page 19**

**DICKSON**

**Spring 2013 Catalog**

CD263

# DICKSON MEANS DATA

**And we mean business too.** We know that products, processes, buildings, and monitoring application is vital to your business. For that reason, Dickson has been designing and manufacturing reliable data logging devices for over 90 years and continues to do so today.

## LETTER FROM THE EDITOR

Hello!

We often find that one reason our customers don't calibrate is because they don't understand what calibrations are or why they are important. We've covered this content in the catalog before, but it is important to reiterate. So, what is a calibration?

The most simple definition of calibration is the comparison of two measurements. In terms of your temperature and temperature/humidity monitoring equipment, calibration refers to confirming an instrument's stated accuracy by comparing it to a more accurate Standard and making any adjustments if necessary.

The calibration process involves exposing your instrument or its probe to extremely precise conditions and comparing the instrument's readings to the Standard's readings. This occurs in specially designed temperature and humidity chambers that allow us to achieve those precise conditions. If the instrument needs to be adjusted, the adjustments are made via specialized software not available outside of Dickson.

We'll cover more topics in the coming months, but if you have any questions feel free to call our team of specialist at **630.643.3747**.

Matt McNamara  
**DicksonOne** Product Manager



## TABLE OF CONTENTS

Letter from DicksonOne Product Manager 2  
Replaceable Sensors 3

### Data Loggers

Temperature & Humidity Display Logger 4  
Paperless Touchscreen Chart Recorder 5  
Pro Series Data Loggers 6  
Compact Data Loggers 7  
K-Thermocouple Accessory Probes 7  
Report Logger 8  
High Temperature Stainless Steel Loggers 8

### DicksonOne Monitoring System 10-11

### Chart Recorders

Voltage Chart Recorder 9  
Disposable Chart Recorder 9  
8 Inch Temperature Chart Recorder 12  
6 Inch Temperature Chart Recorder 12  
8 Inch Temperature & Humidity Chart Recorder 13  
6 Inch Temperature & Humidity Chart Recorder 13  
4 Inch Temperature Chart Recorder 14  
Vaccine Chart Recorder 14  
3 Inch Temperature Chart Recorder 15

### Thermometers & Indicators

Vaccine Alarm Thermometer 15

### Pressure Monitors

Pressure Data Loggers 16  
8 Inch Pressure Chart Recorder 17  
4 Inch Pressure Chart Recorder 17

### Charts, Pens & Calibrations

Charts & Pens 18  
Calibrations 19

### DID YOU KNOW?

Instruments equipped with **Replaceable Sensors** mean you never have to send your instrument back to us for re-calibration again.

**Call 630.543.3747**  
to talk to a specialist now.

# Replaceable Sensors.

No longer do you have to be without your logger while it's calibrating.

- **The RS is So Simple** - Simply order a new replaceable sensor and swap it with the old one and that's it! You're device is now calibrated again!
- **Don't be Without Your Logger** - Continuously monitor your application; never be without your device!
- **Save Money** - No longer do you need to pay to ship your RS compatible logger to or from Dickson!

## COMPATIBLE WITH:

- **Touchscreens:** FH625, FH635, FT600 (page 5)
- **WiZARD2 (900Mhz):** WT320, WH345 (page 7)
- **DicksonOne:** ENT20, ENH20, WFT20, WFH20 (page 8-9)
- **Chart Recorders:** TH8P2, TH8P3, TH8P5 **COMING SOON!**



Look for this symbol throughout the catalog for compatible products.

## Temperature Data Logger

**SM300 \$249** Range -4 to 158°F, -20 to 70°C.  
Accuracy ±0.8°F.

**SM320\* \$299** Remote Probe. Range with Probe  
-300 to 2000°F. Accuracy ±1.8°F.

**SM325\* \$399** Two Remote Probes. Range with Probe  
-300 to 2000°F. Accuracy ±1.8°F.

**SM420 \$499** Remote Probe. Range -50 to 350°F,  
-45 to 176°C. Accuracy ±0.5°F.



SM325 Temperature Model With  
Two Remote Probes

**\$299** Add \$99 for 1-Point NIST

Not for use over 95% RH. Software required and sold separately. For software and other accessories, please call **800.323.2448** or visit [www.DicksonData.com](http://www.DicksonData.com).

\*Temp Range using standard K-TC probe:  
-300 +500°F (A203 probe required for +2000°F range).

## Temperature/Humidity Data Logger

Industries & Applications

- Warehouses
- Archives
- Surgical Suites
- Laboratories

**TM320 \$299** Range -4 to 158°F, -20 to 70°C. Accuracy ±0.8°F.

**TM325 \$399** Remote Probe. Range -40 to 185°F, -40 to 85°C.  
Accuracy ±0.8°F.

From  
**\$299** Add \$99 for 1-Point NIST

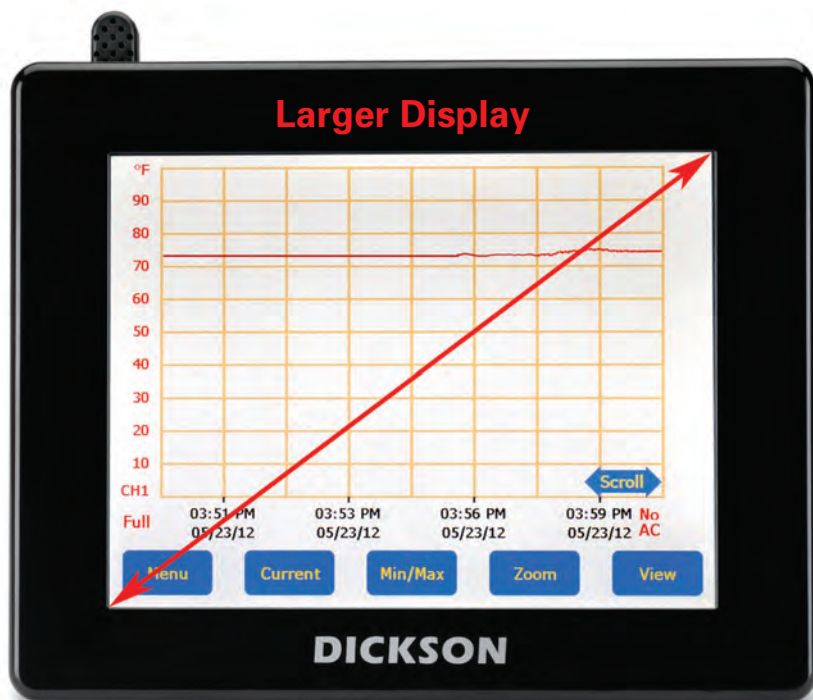


TM320 Temperature Model

### DID YOU KNOW?

Most Fortune 1000 companies use **Dickson** to monitor their critical data.

Call **630.543.3747** to talk to a specialist now.



## Digital Graph Displays Trends

### Full control at your fingertips!

- Jumbo 4.9" x 6.4" touchscreen temperature and temperature/humidity logger
- Zoom and scroll at the touch of the screen
- Audible/visual alarms
- USB and FLASH card data download
- Rechargeable battery backup
- No running back to your PC to see data. Everything you need at the touch of a finger!
- Display Lock
- Pre-Calibrated Sensors

**\$399** Add \$99 for 1-Point NIST



New Display Locking Capability



Compatible with New Pre-Calibrated Sensors

MODEL	REMOTE PROBE	PROBE TYPE	TEMPERATURE RANGES	ACCURACY	RELAYS	PRICE
<b>TEMPERATURE/HUMIDITY</b>						
FH625	Optional	Temp/RH PCS*	-40°F to 185°F (-40° to 85°C)	±0.8°F		\$469
FH635	Optional	Temp/RH PCS*	-40°F to 185°F (-40° to 85°C)	±0.8°F	•	\$529
<b>TEMPERATURE</b>						
FT600	Optional	Temp PCS*	0 to 122°F (-17° to 50°C)	±0.8°F		\$399
FT620	1	KT/C	-300°F to 2000°F (-184° to 1093°C)	±1.8°F		\$429
FT630	2	KT/C	-300°F to 2000°F (-184° to 1093°C)	±1.8°F	•	\$469
FT625	•	Thermistor	-40°F to 300°F (-40° to 148°C)	±0.8°F		\$429
FT640	1	Thermistor/Glycol	-40°F to 158°F (-40° to 70°C)	±1.2°F		\$449
FT645	2	Thermistor/Glycol	-40°F to 158°F (-40° to 70°C)	±1.2°F		\$469
FT660	•	RTD	-148°F to 350°F (-100° to 176°C)	±0.5°F		\$549

\*Pre-Calibrated Sensor

For more information, please visit [www.DicksonData.com](http://www.DicksonData.com).

## Temperature and Temperature/Humidity Data Logger

**Start/Stop for precision reading!**

Features

- LCD display of current and MIN/MAX readings
- High-speed USB connectivity
- User-replaceable battery
- Range -4 to 158°F

**SP425 \$159** Temperature Logger. Digital Display. Accuracy ±1.2°F. Range -4 to 158°F.

**TP425 \$249** Temperature and Humidity Logger. Digital Display. Accuracy ±0.8°F. Range -4 to 158°F.



SP425 Temperature Model

**\$159** Add \$99 for 1-Point NIST



SP125

## Temperature and Temperature/Humidity Data Logger

**Great for shipping or moving!**

Features

- High/low alarm
- High-speed USB connectivity
- User-replaceable battery

**SP125 \$119** Temperature Logger. Accuracy ±1.2°F. Range -10 to 176°F.

**SP175 \$229** Temperature Logger with Thermocouple Probe. Accuracy ±1.8°F. Range -300 to 2000°F.

**TP125 \$199** Temperature and Humidity Logger. Accuracy ±0.8°F. Range -10 to 176°F.

**From \$119** Add \$99 for 1-Point NIST

Software required and sold separately. For software and other accessories, please call **800.323.2448** or visit **www.DicksonData.com**.

\*Temp Range using standard K-TC probe: -300 +500°F (A203 probe required for +2000°F range).

## Compact-Sized Data Loggers

**Ideal when space is a concern!**

Features

- USB connection
- Economical 12-pack
- Six month battery life
- Ranges -4 to +158°F (-20 to +70°C)
- Accuracy  $\pm 1.8^\circ\text{F}$  ( $\pm 1^\circ\text{C}$ )

**SK550 \$699** Temperature. Pack of twelve.

**TK550 \$999** Temperature & Humidity. Pack of twelve.

Software required and sold separately. For software and other accessories, please call **800.323.2448** or visit [www.DicksonData.com](http://www.DicksonData.com).



Pack of 12

## Add an Optional Probe to your Temperature Unit!



**D617 \$52** 10' K-TC Straight Extension Cable



**D605 \$73** 4" Piercing Probe



**D608 \$99** 5" Immersion Probe



**A203 \$125** 6" High Temperature Immersion Probe

## Compact-Sized Report Logger

**No Software!**

**\$49**

**Features**

- Reusable
- Connects directly to your computer via USB
- No cables

For an online product demonstration video, go to: [www.DicksonData.com/RL](http://www.DicksonData.com/RL)



MODEL NUMBER	LOGGING PERIOD	SAMPLE RATE	OPERATING TEMPERATURE RANGE
RL101	1 Day	1 Minute	-40 to 176°F (-40 to 80°C)
RL103	3 Day	1 Minute	-20 to 176°F (-30 to 80°C)
RL107	7 Day	1 Minute	-4 to 176°F (-20 to 80°C)
RL110	10 Day	1 Minute	-4 to 176°F (-20 to 80°C)
RL120	20 Day	2 Minute	32 to 176°F (0 to 80°C)
RL140	40 Day	4 Minute	32 to 176°F (0 to 80°C)
RL175	75 Day	7 Minute	32 to 176°F (0 to 80°C)
RL190	90 Day	9 Minute	32 to 176°F (0 to 80°C)

## Stainless Steel Watertight Temperature Data Loggers

**New generation of high temperature data logging!**

Sample report generated by the compact-sized RL Report Loggers

**Features**

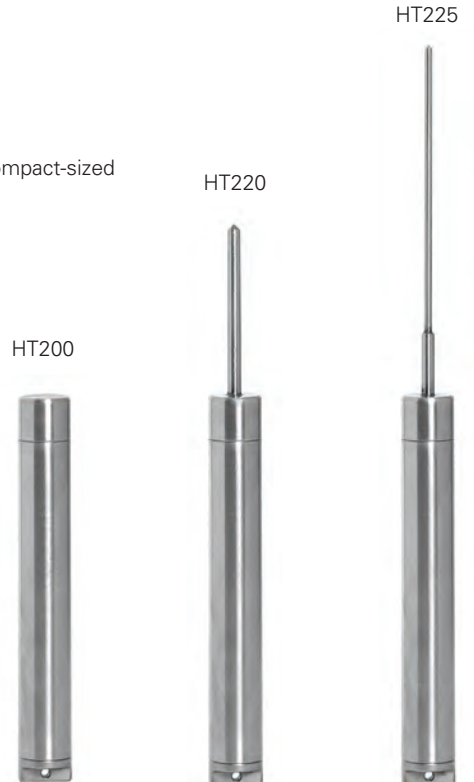
- User-replaceable battery
- USB download capability
- Reinforced probe on the HT225 to prevent breakages
- IP68 rating
- Range: -40 to 257°F

**Prices Starting At**

**\$310** Add \$99 for 1-Point NIST

MODEL	LOGGER LG	LOGGER DIA	PROBE LG	PROBE DIA	PRICE
HT200	5.36"	0.75"			<b>\$310</b>
HT220	7.72"	0.75"	2.36"	0.19"	<b>\$349</b>
HT225	10.24"	0.75"	4.88"	0.11"	<b>\$399</b>

Software required and sold separately. For software and other accessories, please call **800.323.2448** or visit [www.DicksonData.com](http://www.DicksonData.com).



## Voltage Chart Recorder

### ET855

#### Features

- Audible/visual alarm
- Large digital display
- Two screw terminal connectors on the back of the instrument for easy connection of the input transmitter

**\$659**

CHART RANGE	7-DAY CHART	24-HR CHART	31-DAY CHART
0 to +100	C412	C410	C409
0 to +1000	C440	C441	
0 to +200	C436	C456	
0 to +14	C453	C457	
0 to +150	C435	C425	
0 to +300	C431	C422	
-10 to +10	C405	C495	
-150 to +250	C452	C442	

Charts sold separately. For charts and accessories, please call **800.323.2448** or visit [www.DicksonData.com](http://www.DicksonData.com).

## Disposable Recorder

**One-time use! This disposable temperature recorder is perfect for monitoring goods while in transit.**

Multiple features tailored for shipping needs:

- Failsafe start-up and pull out start tab
- Tamper-proof crimped seal
- Shock and vibration protection
- Low cost shipping alternative

MODEL	TEMPERATURE RANGES	RECORDING TIME
D301	-20 to 100°F • -30 to 37.5°C	10 Day
D302	-20 to 100°F • -30 to 37.5°C	20 Day
D307	-20 to 100°F • -30 to 37.5°C	40 Day
D309	-20 to 100°F • -30 to 37.5°C	75 Day

**\$49** Each

D301

### DID YOU KNOW?

**Dickson** has a team of specialists with which you can discuss your application and find the product that best suits your needs.

**Call 630.543.3747**  
to talk to a specialist now.



ET855



# DicksonOne

## YOUR ENVIRONMENTAL MONITORING ALL IN ONE PLACE

**DicksonOne** is a SaaS platform that simplifies your temperature and humidity monitoring process. It is a revolutionary system that rethinks the entire environmental monitoring process. In talking to our customers we identified a number of pain points and set out to solve them.

### The **Old** Way

#### PROBLEM

**Retrieval of Data:** in most cases someone is literally responsible for going around their facility collecting the paper charts from a recorder or downloading the data from a logger.

#### PROBLEM

**Storage of Data:** some customers require dedicated rooms for the storage of paper charts or computers that hold large quantities of log files.

#### PROBLEM

**Multiple Location Monitoring:** one person cannot adequately and efficiently monitor multiple locations.

### The **DicksonOne** Way

#### SOLUTION

**Automation:** No longer does an individual have to go retrieve data from all over your facility or multiple facilities. The loggers send the data directly to the cloud.

#### SOLUTION

**Organization:** data in the cloud is easier to organize and access. Monitor data offsite simply from any internet enabled device.

#### SOLUTION

**Anytime, Anywhere:** Multiple location monitoring is no longer problematic; Within the US or internationally, you can place loggers anywhere and have the data at your fingertips.

To Learn More About This Amazing Product Visit  
**DicksonOne.com**

Starting At Just  
**\$598**



# DO MORE WITH YOUR DATA



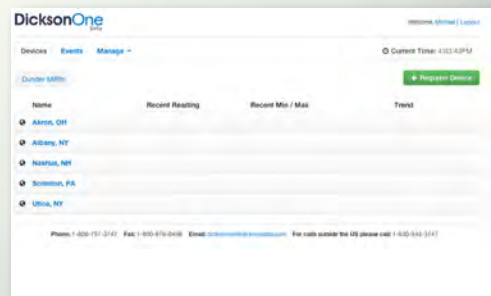
**Intuitive Interface:** Quick to learn and easy to use, DicksonOne was designed to be a pain free experience that's easy to pick up.



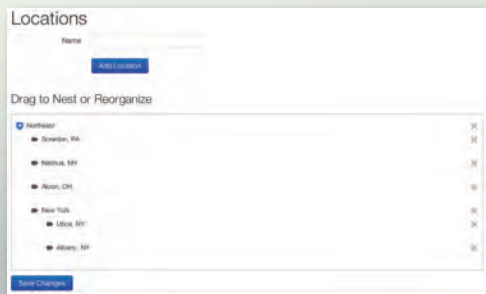
**Sharing Data:** Whether you need to send a report to your coworker, boss, or an auditor, giving access to the right people is simple.



**Alarms:** You need to know when something isn't right. Setup email and SMS text alerts to as many people as you'd like.



**Organization:** Keep your loggers, locations, and ultimately your data organized and within reach.



**Multi Locations:** From small single-building operations to large international corporations with many locations, monitor every critical point from one place!



**Historical Data:** Never lose that chart or log file again; we'll save all of your data for as long as your account is active so there's no question when the auditor stops by.

For more information visit [DicksonOne.com](http://DicksonOne.com) or call a system specialist at:  
**888.452.4626**

## 8 Inch Temperature Chart Recorder

Easy-to-read chart lets you see temperature details, not just trends!

### Industries & Applications

- Ovens
- Warehouses
- Food Processing
- Archives
- Laboratories
- Health - Blood storage, Dialysis Centers, Medical Centers

### MODELS AND FEATURES

**KT800 \$419** Probe. Battery operated.

**KT802 \$469** Probe. Display.

**KT803 \$569** Probe. Display. Alarm. **BEST SELLER.**

**KT856 \$729** 2 Probes. Display. Alarm. Relays.

ALL MODELS HAVE THE FOLLOWING RANGES:

- 50 to +50°F/C • -20 to 20°F/C • 0 to 100°F/C
- 0 to 150°F/C • 0 to 250°F/C • 0 to 500°F/C
- 0 to 1000°F/C • 0 to 2000°F



KT803

Charts sold separately. For charts and accessories, please call 800.323.2448 or visit [www.DicksonData.com](http://www.DicksonData.com).

## 6 Inch Temperature Chart Recorder

Easy-to-read chart lets you see temperature details, not just trends!

### Industries & Applications

- Refrigerators • Storage • Clean Rooms • Laboratories
- Pharmaceuticals • Medical Equipment

### MODELS AND FEATURES

**KT621 \$369** Probe.

**KT622 \$469** Probe. Display. **BEST SELLER.**

**KT625 \$599** Probe. Display. Alarm. Relays.

ALL MODELS HAVE THE FOLLOWING RANGES:

- 100 TO 0°F/C • -50 TO 0°F/C • -50 TO +50°F/C
- 0 TO 50°F/C • 0 TO 100°F/C • 50 TO 100°F/C
- 0 TO 250°F/C • 0 TO 500°F/C



KT622

### DID YOU KNOW?

Dickson has over 10 different probe types to meet your specific monitoring needs.

Call 630.543.3747 to talk to a specialist now.

## 8 Inch Temperature & Humidity Chart Recorder

Easy-to-read chart lets you see temperature and humidity details, not just trends!

Industries & Applications

- Pharmaceuticals
- Archives
- Laboratories & Clean Rooms
- Warehouses
- Health - Blood storage, Dialysis Centers, Medical Centers

MODELS AND FEATURES

**TH800 \$489** Battery operated.

**TH802 \$569** Display.

**TH803 \$679** Display. Alarm. Probe. **BEST SELLER.**

**TH805 \$729** Display. Alarm. Probe. Relays.

Not for use over 95% RH

RANGES	MODELS
32 to 120°F	TH800
0 to 50°C	TH800
-20 to 120°F	TH802, TH803, TH805
-20 to 50°C	TH802, TH803, TH805
40 to 110°F	TH802, TH803, TH805
5 to 40°C	TH802, TH803, TH805
0 to 185°F	TH803, TH805

TH800



Charts sold separately. For charts and accessories, please call 800.323.2448 or visit [www.DicksonData.com](http://www.DicksonData.com).

## 6 Inch Temperature & Humidity Chart Recorder

Easy-to-read chart lets you see temperature details, not just trends!

Industries & Applications

- Ovens • Warehouses • Food Processing • Archives • Labs
- Health - Blood storage, Dialysis Centers, Medical Centers

MODELS AND FEATURES

**TH621 \$489** Probe.

**TH622 \$569** Display.

**TH623 \$679** Probe. Display. Alarm. **BEST SELLER.**

ALL MODELS HAVE THE FOLLOWING RANGES:

32 to 100°F • 0 to 50°C

**DID YOU KNOW?**

If you don't like changing **Charts and Pens** we have a number of easier solutions.

**Call 630.543.3747** to talk to a specialist now.



TH623



## 4 Inch Temperature Chart Recorder

**Designed with simplicity in mind!**

Easy-to-use, battery operated and portable

- Digital display
- 24 hour / 7 day recording time
- Wall mount
- Battery door
- Hinged door

Applications

- Refrigerators
- Warehouses
- Freezers
- Laboratories



**\$239** Add \$99 for 1-Point NIST

SL4100 Temperature Model

Charts sold separately. For charts and accessories, please call 800.323.2448 or visit [www.DicksonData.com](http://www.DicksonData.com).

MODEL	DIGITAL DISPLAY	TEMPERATURE RANGES	PRICE
SL4350	•	-22 to 122°F • -30 to 50°C	<b>\$239</b>
SL4100	•	0 to 100°F • -18 to 37°C	<b>\$239</b>
SL490	•	45 to 90°F • 7 to 32°C	<b>\$239</b>



VFC70

## Vaccine Chart Recorder

**VFC70**

Features

- Easy-to-read special vaccine chart with circular bands highlighting the acceptable vaccine ranges of 35-46°F, 2-8°C
- LCD display shows current temperature for quick reference
- Fahrenheit/Celsius Selectable

**\$259** Add \$99 for 1-Point NIST

Charts sold separately. For charts and accessories please call 800.323.2448 or visit [www.DicksonData.com](http://www.DicksonData.com).

### DID YOU KNOW?

With **DicksonOne** you can create as many email and text alarms as you need and send them to as many people as you want.

**Call 630.543.3747**  
to talk to a specialist now.



SC367

## 3 Inch Mini Temperature Chart Recorder

**Ideal when space is a concern!**

Applications

- Refrigerators
- Clean Rooms
- Transportation
- Storage

**\$219** Add \$99 for 1-Point NIST

MODEL	TEMPERATURE RANGES	PRICE
SC367	-14 to 32°F • -25 to 0°C	<b>\$219</b>
SC377	4 to 50°F • -15 to 10°C	<b>\$219</b>
SC386	22 to 68°F • -5 to 20°C	<b>\$219</b>
SC387	50 to 96°F • 10 to 35°C	<b>\$219</b>
SC397	76 to 122°F • 25 to 50°C	<b>\$219</b>

Charts sold separately. For charts and accessories, please call 800.323.2448 or visit [www.DicksonData.com](http://www.DicksonData.com).

## Vaccine Alarm Thermometer

MM120/125

Features

- LCD display shows current temperature, MIN/MAX temperatures, uses visual alert when in alarm mode and battery level indicator
- High/Low alarms
- Temperature range -58 to ±122°F (-50 to 50°C)

MM120 \$49 One Probe.

MM125 \$59 Two Probes.

**\$59** Add \$99 for 1-Point NIST



MM125 Two Probe Temperature Indicator



## Rugged Utility Pressure Data Logger

### Compact and discreet!

This data logger fits in toolboxes, tight corners or in wide open spaces without attracting attention. Built for real-world water and gas pressure monitoring.

**ALL NEW**

**Fast, USB Downloads!**

- Water resistant case
- 3 year battery
- Unobtrusive design
- Fits easily in a toolbox
- Pressure sensor includes built in diaphragm seal.
- USB Connection

**PR150 \$449** 0-100 PSI  
**PR350 \$449** 0-300 PSI

**\$499** Add \$99 for 1-Point NIST

Software required and sold separately. For more information, please visit [www.DicksonData.com](http://www.DicksonData.com).

## Pressure Data Logger

### User-friendly features!

- One-second sampling rate
- User-replaceable battery
- Pressure sensor includes built-in diaphragm seal
- Display, USB connectivity, FLASH memory downloads
- IP68 case
- Delayed start - start logging once unit is in place

- A. Digital display
- B. USB
- C. FLASH memory card
- D. Battery
- E. Splashproof case

**PR125 \$499** Range 0 to 100 PSI.

**PR325 \$499** Range 0 to 300 PSI.

**PR525 \$599** Range 0 to 500 PSI.

**\$499** Add \$99 for 1-Point NIST



PR325

## 8 Inch Pressure Chart Recorder

**Large, easy-to-read chart!**

**Features**

- Rugged low-maintenance design features
- Single AA battery power
- Corrosion-resistant case
- 7-day or 24-hour operation
- Keyhole slot for wall mount
- Splashproof case with an IP rating of 66
- 1/4 inch NPT Connector

**PW860 \$629** 7-day. 0 to 100 PSI.

**PW861 \$629** 24-hour. 0 to 100 PSI.

**PW864 \$629** 7-day. 0 to 200 PSI.

**PW865 \$629** 24-hour. 0 to 200 PSI.

**PW866 \$629** 7-day. 0 to 300 PSI.

**PW867 \$629** 24-hour. 0 to 300 PSI.

**PW875 \$749** 24-hour. 0 to 1000 PSI.



PW875

**\$599**

Add \$99 for 1-Point NIST

## 4 Inch Pressure Chart Recorder

**Compact and durable design!**

**Features**

- Operates up to one full year on a single AA battery
- 1/4 inch NPT connection
- For applications where splashproof IP rating is not required
- 7-day or 24-hour selectable

**PW470 \$449** 0 to 100 PSI.

**PW474 \$449** 0 to 200 PSI.

**PW476 \$449** 0 to 300 PSI.

**PW479 \$449** 0 to 500 PSI.



PW470

**\$449**

Add \$99 for 1-Point NIST

Charts sold separately. For charts and accessories, please call 800.323.2448 or visit [www.DicksonData.com](http://www.DicksonData.com).

# Charts and Pens for Dickson Chart Recorders

Charts are not included with the units and need to be ordered separately.

## 8" Charts (ET8, KT8, PR8, TH8)

CHART RANGE	MODEL NUMBER	7 DAY	24 HR
0 to +100°F/C	ET855/KT800/801/802/803/805/855/85	C412	C412
-50 to +50°F/C	KT800/801/802/803/805/855/856	C414	C414
0 to +250°F/C	KT800/801/802/803/804/805/855/856	C439	C439
0 to +500°F/C	KT802/803/804/805/855/856	C459	C459
0 to +1000°F/C	ET855/KT804/PW875	C440	C440
-20 to +50°C	TH800/801/802/803/805	C473	C473
0 to +200°F	ET855	C436	C436
0 to +200°F**	TH803/805	C437	C437
-20 to +120°F	TH800/801/802/803/805	C417	C417
+5 to +40°C	TH802/803/805	C479	C479
+40 to +110°F	TH802/803/805	C477	C477
0 to +14	ET855	C453	C453
0 to +150	ET855	C435	C435
0 to +300	ET855	C431	C431
-10 to +10	ET855	C405	C405
-150 to +250	ET855	C452	C452

## 6" Charts (KT6, TH6)

CHART RANGE	MODEL NUMBER	7 DAY	24 HR
-50 to +50°F/C	KT621/22/23/25	C651	C652
0 to ±50°F/C	KT621/22/23/25	C653	C654
0 to ±100°F/C	KT621/22/23/25 TH621/22/23	C657	C658
0 to +250°F/C	KT621/22/23	C659	C660
0 to +500°F	KT621/22/23	C661	C662
50 to +100°F/C	KT621/22/23	C655	C656
0 to +50°C	TH621/22/23	C663	C664
0 to +200°F	TH623	C665	C667

\* Not all models have a 31 day recording time

\*\*0 to 100% RH

**\$40** For a box of 60 charts

## 4" Charts (PW4, SK4, SL4, VFC)

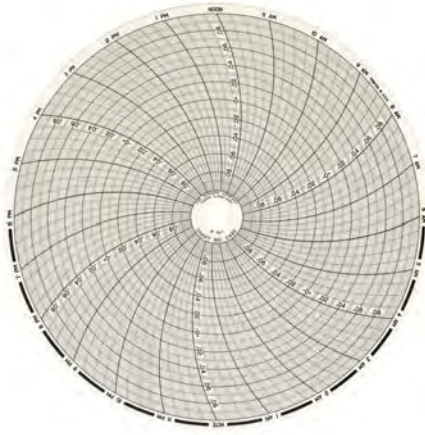
CHART RANGE	MODEL NUMBER	7 DAY °F	7 DAY °C	24 HR °F	24 HR °C
-22 to +122°F	SL4350/SK4350	C206	C181	C205	C180
0 to +100°F/PSI	SL4100/SK4100/PW470	C012	C210	C010	C209
+45 to +90°F	SL490	C070	C208	C090	C207
0 to 200 PSI	PW474	C040		C026	
0 to 300 PSI	PW476	C036		C022	
0 to 500 PSI	PW479	C056		C028	
0 to +70°F	VFC70/VFC21	C203	C204		

## 3" Charts (SC3)

CHART RANGE	MODEL NUMBER	7 DAY °F	7 DAY °C	24 HR °F	24 HR °C
-14 to +32°F	SC367	C302	C310	C301	C309
+4 to +50°F	SC377	C304	C312	C303	C311
+22 to +68°F	SC386	C320	C318	C319	C317
+50 to +96°F	SC387	C306	C314	C305	C313
+76 to +122°F	SC397	C308	C316	C307	C315

## Pens

MODEL NUMBER	DESCRIPTION	PRICE
P222	Replacement Pens - 6 Red (Temperature & Universal)	\$45
P226	Replacement Pens - 6 Blue (Humidity)	\$45
P246	Replacement Pens - 3 Red, 3 Blue (Temperature & Humidity)	\$45
P266	Replacement Pens - 3 Red, 3 Blue (Temperature & Universal 2 channel)	\$45



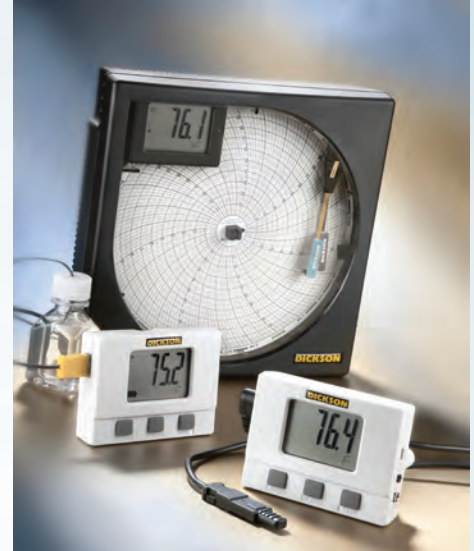
# Don't Let Your Calibration Lapse.

Be sure to have your Dickson instrument recalibrated.

All instruments lose accuracy over time due to normal usage and the environmental conditions to which they are exposed. Periodic NIST certified calibrations maintain the accuracy of your data loggers and chart recorders throughout their lives.

Calibration is **never** optional. Whatever situations compel you to monitor temperature, humidity, pressure, or other conditions, also require you to calibrate the data loggers or chart recorders used to document those conditions.

Depending on the application your instrument should be re-calibrated every 6-12 months. If you have exceeded that time please call us at **1.800.323.2448** to get your instrument re-calibrated.



**RECALIBRATION OPTIONS**

	N350	N150	N450	N550
NIST Traceable	X	X	X	X
1-Point (Mid Point)		X		
3-Points (Low, Mid, High)	X		X	X
A2LA-17025 Compliance Before Data			X	
After Data	X	X	X	X
<b>PRICE</b>	<b>\$209</b>	<b>\$156</b>	<b>\$315</b>	<b>\$269</b>

Custom Point (N995) also available: User chooses temperature point to be calibrated, NIST Traceable, supplies after data

## Certificate of Instrument Calibration and Testing

Calibration report shall not be reproduced, except in full, without written authorization from Dickson.

**Customer Instrument**

Dickson Model Number: **TH803**

Serial Number: **SAMPLE**

Approved By: *Dan Gawel*

Calibration Date: **03/01/2011**

Calibration Type: **3 PT A2LA NIST**

**Calibration Standards**

General Eastern Model M3  
Ser. #2391095/1261299  
Azonix Model A1011 Ser. #T2472-8204  
Probe Ser. #634230

**ACCREDITED**  
Cert #1831 of Calibration

Outdated Calibration

(for entry of name/address/location or internal unit ID)  
The calibration standards are traceable through the National Institute of Standards and Technology.

**Calibration Procedure P1130**

Dickson Brand Charts and Pens Required to Achieve Stated Accuracy  
The customer instrument was compared to the calibration standard. Drifts and faults were determined, and any necessary mechanical or electronic adjustments were taken. The Dickson calibration system conforms to the requirements of MIL-STD-45662A, ANSI/NCSL Z540, and ISO 17025 as appropriate. Recalibration of the customer instrument is recommended within 6-12 months after the unit is placed into service. Any number of factors may cause the calibration item to drift before the recommended interval has expired.  
This certificate only relates to this specific unit. The unique certificate number equals the model # + serial # + cal date.

Environmental Conditions		72 °F	41 %RH
Calibration Standard Reading	Customer Instrument Reading	Unit Specification	
<b>Humidity (%RH)</b>			
	9.1	Humidity ± 2% RH	
9.5	41.2	± 2% RH	
41.2	86.2	± 3% RH	
86.6			
<b>Temperature °F (°C)</b>			
	5.4 (-14.8)	Temperature ± 1.8 °F (± 1.0 °C)	
5.2 (-14.9)	73.1 (22.8)		
72.5 (22.5)	115.1 (46.2)		
114.5 (45.8)			

The TH803 has an ISO/IEC 17025 required NIST Technical note 1297. Guidelines for Evaluating and Expressing the Uncertainty of NIST Measurement Results, estimated measurement uncertainty at 95% CL (K=2) of ±0.7°F and ±1.1 %RH.

DID YOU KNOW?

With **DicksonOne** you can easily share your data with team members, managers, and anyone else with just a few clicks.

**Call 630.543.3747**  
to talk to a specialist now.

# DICKSON

Dickson  
930 South Westwood Avenue  
Addison, Illinois 60101-4917

800 323 2448 tel  
800 676 0498 fax  
www.DicksonData.com

PRSRT. STD.  
U.S. Postage  
**PAID**  
The Dickson  
Company

## WE'RE READY TO TAKE YOUR ORDER!

1-800-323-2448 or online at [www.DicksonData.com](http://www.DicksonData.com)



SIMPLY SCAN THE CODE  
WITH YOUR SMARTPHONE  
TO CALL US!

## Replaceable Sensors

- Don't be without your logger while it is calibrating
- Simply replace your old PCS with a new one and you're now calibrated
- Compatible with New Touchscreen and WiZARD2 models as well as our all new DicksonOne (pages 10 & 11)

Visit [dicksondata.com/rs](http://dicksondata.com/rs) for more information

## DicksonOne

Access your temperature and humidity data 24/7, on any device with an internet connection, anywhere you are.



See pages 10-11 or visit [DicksonOne.com](http://DicksonOne.com) for more information on DicksonOne.

### DID YOU KNOW?

**DicksonOne** is now in the cloud. Find out what the cloud can do for you.

**Call 630.543.3747**  
to talk to a specialist now.

★ SIGN UP FOR DICKSON'S LATEST UPDATES AT [DICKSONDATA.COM/SIGNUP](http://DICKSONDATA.COM/SIGNUP) ★