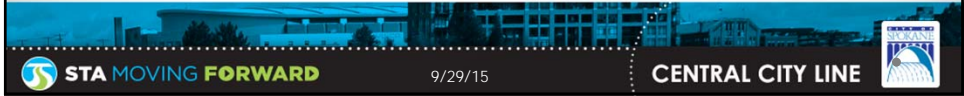


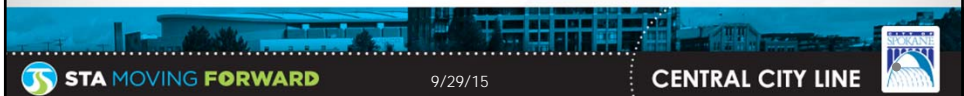
Central City Line Kick-off and Tour

Phase C – Preliminary Engineering,
Environmental Documentation and Small
Starts Submittal



Kickoff Meeting Agenda

Time	Item
1:00 PM	Welcome, Introductions and Agenda Review
1:10 PM	Overarching Goals and Objectives
1:20 PM	PE Scope Overview
1:30 PM	Relationship of PE Task and Strategic Overlay Plan
1:40 PM	Overview of Project Timeline
1:45 PM	Project Critical Decisions and Drivers
2:00 PM	Questions and Comments
2:10 PM	Next Steps
2:20 PM	Break
2:30 PM – 4:30 PM	Tour of the Alignment



Over-Arching Goal

Develop CCL project definition and environmental documentation to support a competitive Small Starts Grant Application, and build stakeholder and community support for the project.



STA MOVING FORWARD

9/29/15

CENTRAL CITY LINE



Key Objectives

1. Form and engage a STA Board and City-Council approved steering committee to provide timely input to the PD process.
2. Finalize mode selection based on viable vehicle and vehicle power solutions that are acceptable to stakeholders.
3. Partner with FTA to develop NEPA environmental documentation supporting of and resulting in a Categorical Exclusion finding.
4. Engage key stakeholders and public with purposeful touch points and access to information throughout the process.



STA MOVING FORWARD

9/29/15

CENTRAL CITY LINE



Key Objectives

5. Determine station and stop designs consistent with approved HPT guidelines.
6. Partner with the City of Spokane to identify policies that support successful implementation of the CCL by encouraging redevelopment and increasing ridership
7. Identify and coordinate potential cost saving and sharing solutions to align with shared opportunities and benefits



STA MOVING FORWARD

9/29/15

CENTRAL CITY LINE



Scope Overview

- | | |
|---|---|
| 1. Project Management and Quality Control | 8. Preliminary Geotechnical Data Review |
| 2. Project Communications and Outreach | 9. Environmental Documentation |
| 3. Planning and Conceptual Design | 10. Preliminary Engineering – Roadway and Station Areas |
| 4. FTA Small Starts Grant Agreement Application | 11. Urban and Architectural Design |
| 5. Ridership Forecasting / Operations Analysis | 12. Develop Cost Estimates |
| 6. Traffic Operational Modeling | 13. Preliminary Engineering |
| 7. Surveying and Mapping | 14. Right-of-Way |

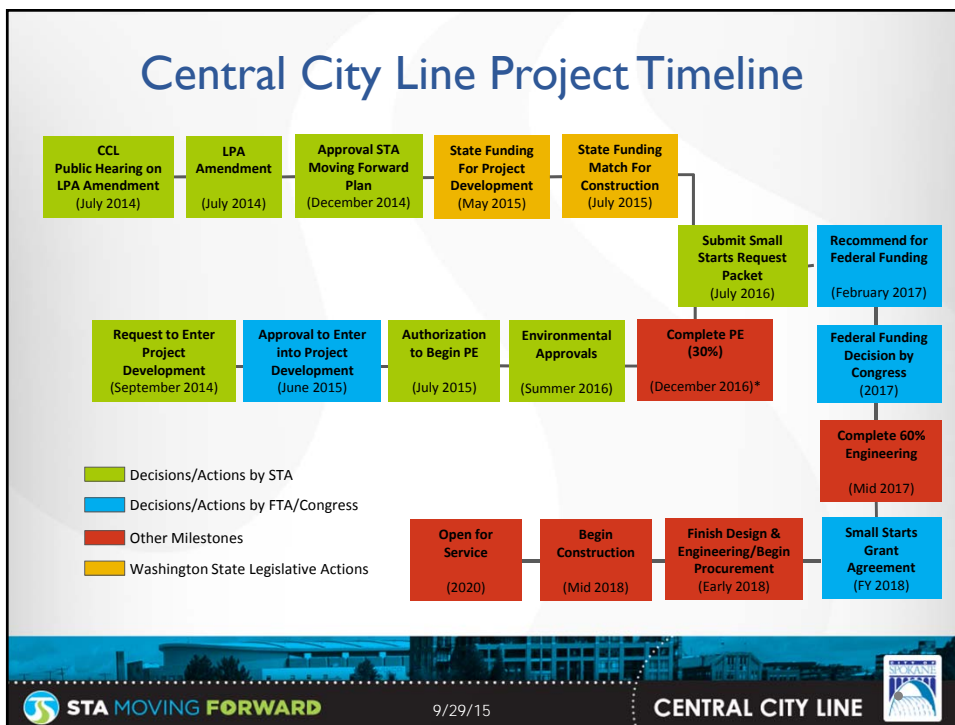
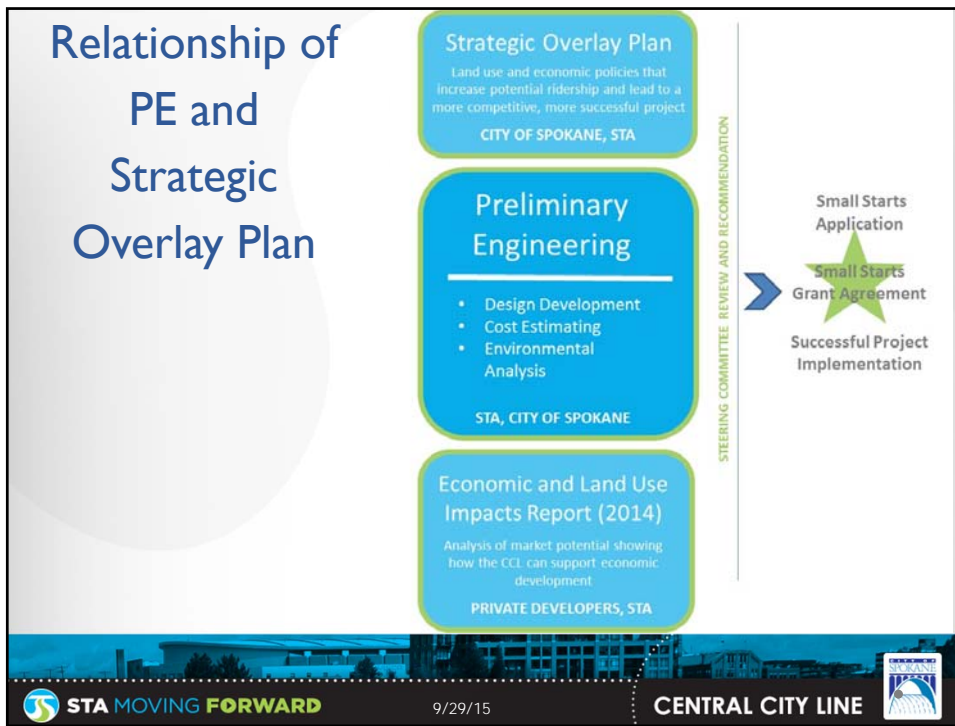


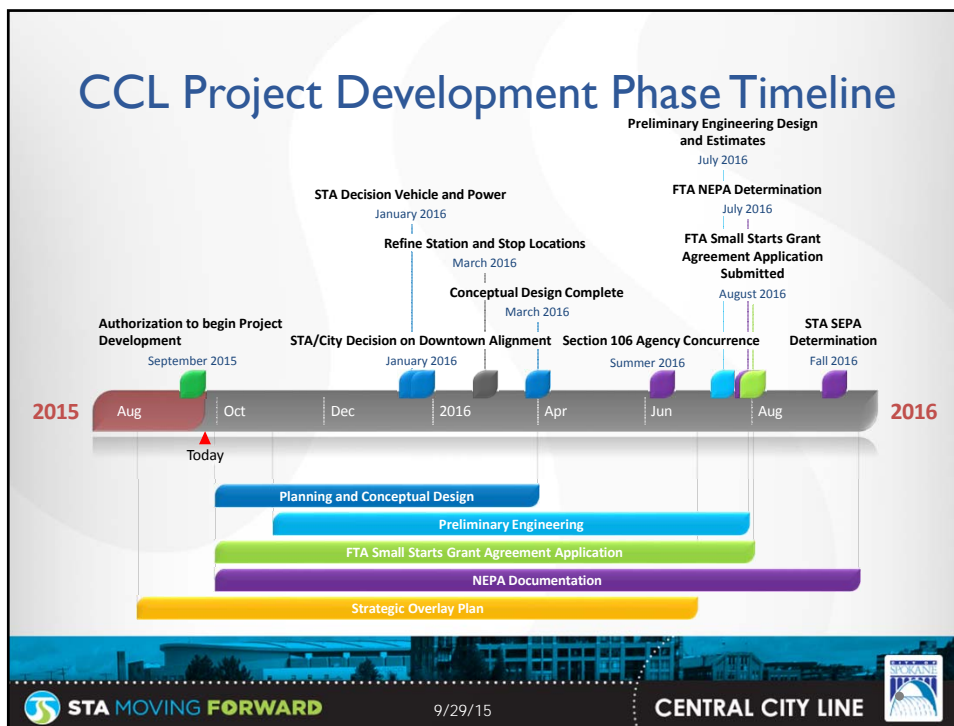
STA MOVING FORWARD

9/29/15

CENTRAL CITY LINE







CCL Project Critical Decisions and Drivers

Key Decisions	Date	Key Decision Making Stakeholders	Touch Points / Outreach	Key Drivers / Linkages	Notes
Establish Project Steering Committee	Pre-PE (ASAP)	STA Board Spokane City Council		Group Established in time to vet subsequent decisions	In Progress. STA Board and City Council have passed a joint resolution to establish membership and responsibilities.
Agreement on Downtown Alignment	December 2015 / January 2016	STA Board City of Spokane CCL Steering Committee	Neighborhoods / Community Stakeholders Plan Commission Downtown Spokane Partnership	Prerequisite for beginning NEPA Prerequisite for Small Starts application	
Finalize Station / Stop Locations	February/March 2016	STA Board City of Spokane CCL Steering Committee	Neighborhoods / Community Stakeholders	Prerequisite for Beginning NEPA	

CCL Project Critical Decisions and Drivers

Key Decisions	Date	Key Decision Making Stakeholders	Touch Points / Outreach	Key Drivers / Linkages	Notes
Finalize Vehicle/Power selection	January/February 2016	STA Board CCL Steering Committee	FTA	Prerequisite for beginning NEPA analysis Prerequisite for Small Starts application	
Maintenance Facility location. How big, cost, what is CCL portion?	February/March 2016	STA Board	FTA	Prerequisite to Small Starts application Potential prerequisite to NEPA	STA Conducting Location/Design as part of Facilities Plan NEPA Discussion with FTA
Type and location of street improvements	April/May 2016	STA Board City of Spokane Gonzaga		Best to include more early: i.e. construction staging areas, charging infrastructure	MOU to be developed?
Infrastructure Co-Investment Opportunities	Ongoing	STA Board City of Spokane Colleges		Prerequisite to Small Starts application (finance plan)	

STA MOVING FORWARD 9/29/15 CENTRAL CITY LINE

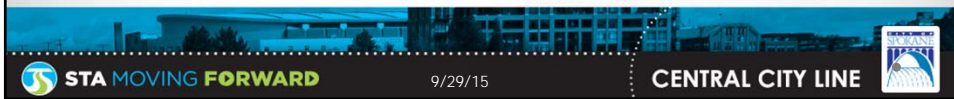
Questions & Comments

...

STA MOVING FORWARD 9/29/15 CENTRAL CITY LINE

Next Steps

- Initiate Steering Committee
- Project Critical Decisions and Drivers
 - Formalize Critical Decision Processes
 - Formalize Decision Making Criteria
- Initiate Planning and Conceptual Design
- Initiate Ridership Forecasting / Operational Analysis
- Initiate Traffic Modelling

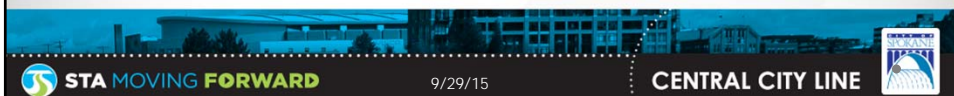


Break

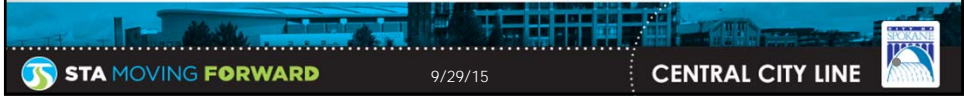
• • •


Tour will begin at 2:30

Please board the bus on the south side of Boone



THANK YOU!
...



 **STA MOVING FORWARD**

9/29/15

CENTRAL CITY LINE

