

Central City Line Steering Committee

Meeting #9

Tuesday, February 28, 2017
1:00 PM – 2:30 PM

Spokane Regional Transportation Council
Paulsen Building
421 W. Riverside Ave., Spokane, WA

1

February 28, 2017



Agenda

- Welcome, Introductions and Agenda Review
- Public Expressions
- Administrative Tasks
- Small Starts Grant Submittal Timeline Update
- Downtown Infrastructure Co-Investments Update
- Finance Update
- Economic Development/Land Use Update
- Outreach Update
- Next Meeting

2

February 28, 2017



Public Expressions

At this time, the Steering Committee will give the public an opportunity to express comments or opinions pertaining to the project


Administrative Tasks

- Approval of December and January meeting minutes

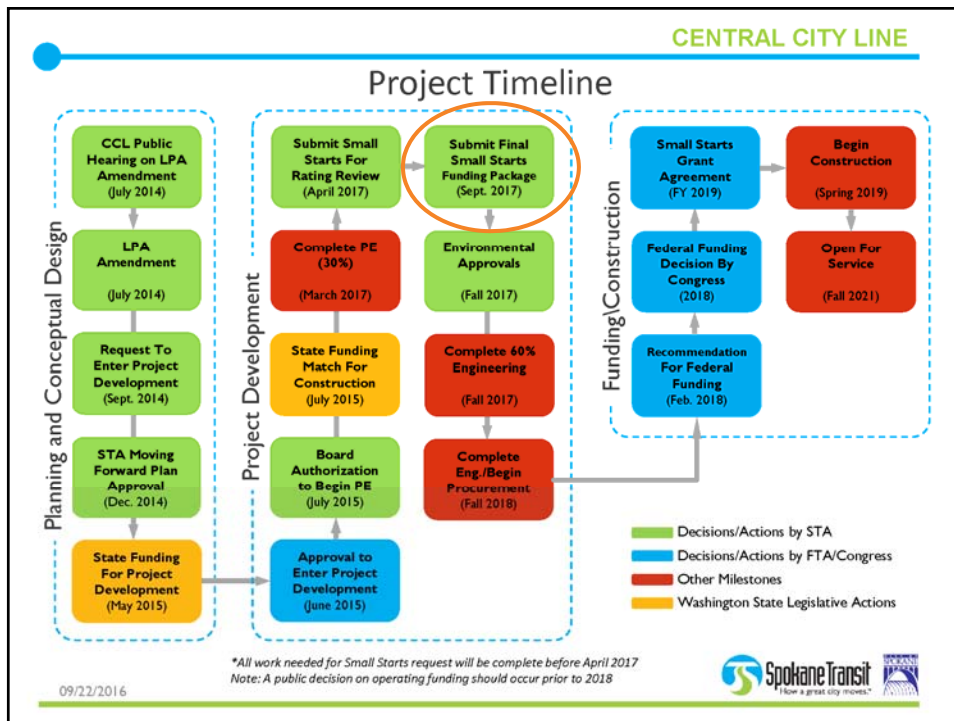
CENTRAL CITY LINE

Small Starts Grant Submittal Timeline Update

...



5 February 28, 2017




CENTRAL CITY LINE

SS Rating Review – Submittal Process

```
graph LR; Review[Review] --> Approval[Approval]; Approval --> Submission[Submission];
```

Review	Approval	Submission
<ul style="list-style-type: none">•Steering Committee Review February 28•STA Board Workshop March 1•Public Open House March 9 (4-6 PM)•City Council Study Session March 30	<ul style="list-style-type: none">•Steering Committee Endorsement March 28•City Council Resolution TBD•STA Board of Directors April 20	<ul style="list-style-type: none">•Complete all detailed work by March 31 for internal review•Submit by April 27•GSI DC Fly-in May 2-4

7 February 28, 2017 

CENTRAL CITY LINE

Downtown Infrastructure Co-Investments Update

• • •

8 February 28, 2017 

Existing Co-Investment

- CCL Core Infrastructure Includes > \$7.8 Million in Improvements in City Infrastructure
 - City Parks
 - Coeur d'Alene Park Master Plan Pathways at Station Locations
 - Chief Garry Park Pedestrian Crossing
 - Roadway/Right-of-Way
 - ADA Ramp Upgrades on Station Blocks
 - Concrete bus pad at Station Locations
 - Pedestrian Improvements at Pacific/Maple
 - Festival/Transit Street Improvements on Wall St (Riverside to Main)
 - Pedestrian/Bicycle/Greenway/Transit Improvements on Cincinnati
 - Traffic-related Improvements

Downtown Co-Investment Opportunity

- City Road Improvements Bond (\$5 million per year)
 - Downtown streets ranked among highest
 - City aligned 6-year CIP with CCL (Sprague, First, Main, Riverside)
 - Recently explored the possibility of joining projects to obtain additional federal funding
- Outcomes of Evaluation
 - Expanding scope of the Small Starts grant request will cause delay to the submission process
 - There is risk that there will be added delay due to revising environmental documentation
 - Federal Transit staff encouraged STA to submit as soon as possible and for the current deadline
 - Project cost estimate will be kept within the \$72 million already communicated to public

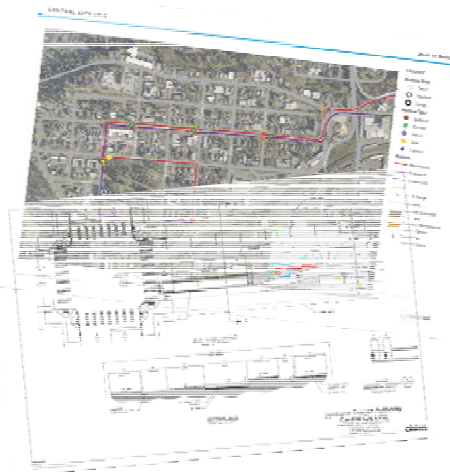
Finance Update

...



CCL Core Infrastructure

- Roadway Geometric Improvements
- Sidewalk/ADA
- Traffic
- Stations/Layovers
- Charging Facilities
- Operations and Maintenance Facility
- Vehicles
- Fare Collection



CENTRAL CITY LINE

Core Infrastructure – Capital Costs

- Continued Updates to Preliminary Estimate
- Preliminary Engineering Estimate
 - Based on initial engineering work
 - Coordination with manufacturers, peer projects
 - Allocated contingencies
- Closing Estimate Gaps
 - **Traffic Related Infrastructure**
 - Maintenance Facility
 - SCC Transit Center Improvements
 - Construction Phasing and Timeline
- In progress – core costs \$68 - \$72 million

13

February 28, 2017



CENTRAL CITY LINE

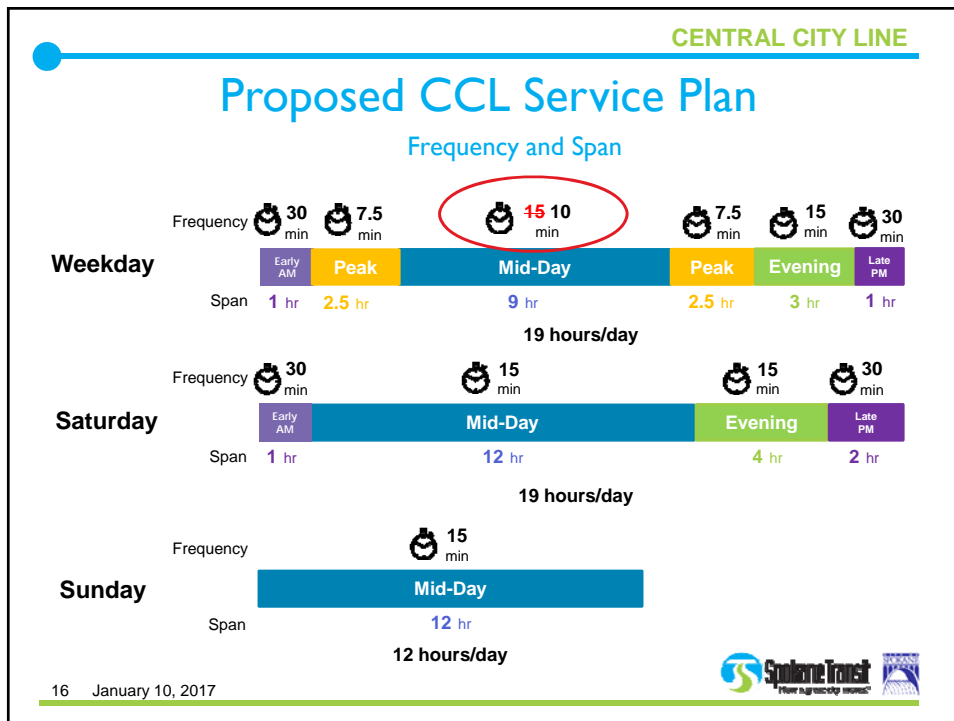
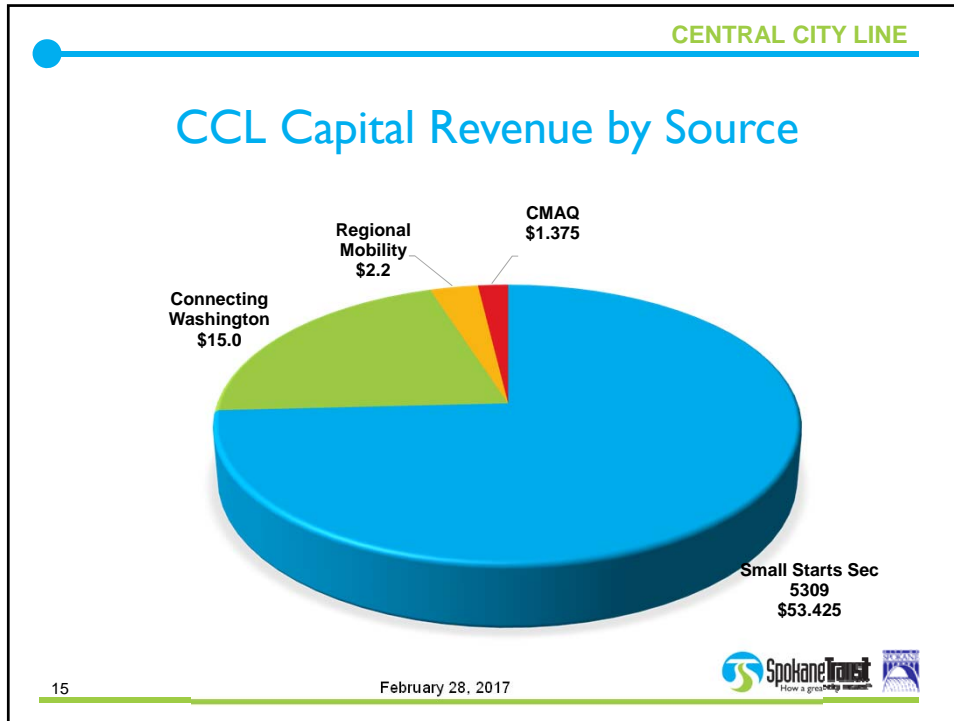
CCL Finance Plan – Capital Assumptions

- Total CCL Project Capital Cost:
 - **\$72 million**
- Sec. 5309 Small Starts Request:
 - **\$53.425m (74.2%)**
- Non-5309 Share (“Local Match”):
 - **\$18.575m (25.8%)**

14

February 28, 2017






CENTRAL CITY LINE

CCL Annual O&M Cost Estimate

(Comparison of 15- vs 10 -min Mid-Day Weekday Frequency)

	15-Min Mid-Day	10-Min Mid-Day
Annual Hours	29,800	34,474 (+15%)
Annual Vehicle Miles	344,000	396,451 (+15%)
Fleet Requirement (incl. Spares)	10	10
Total Annual O&M Cost	\$3,386,040	\$3,949,162

17
February 28, 2017



CENTRAL CITY LINE

Local Financial Commitment Criteria

Current Condition

25%

- Average Fleet Age
- Bond ratings (within last 2 years)
- Current ratio (current assets/current liabilities)
- Recent service history

Target Rating:

High to Med-High

Commitment of Funds

25%

- Amount of committed, budgeted, or planned funds
- Whether there are significant private contributions to the project

Target Rating:

High

Financial Capacity and Reasonableness of Assumptions


50%

- Assumptions about revenue and expense growth comparable to historical experience
- Reasonableness of project capital cost estimate
- Adequacy of meeting state of good repair needs
- Financial capacity to withstand funding shortfalls or cost overruns (above and beyond contingency included in the cost estimate)

Target Rating:

Medium

18
February 28, 2017



Next Steps: Finance Plan

- Finalize engineering capital and O&M cost estimates
- Complete Small Starts financial templates and associated projections
- Finalize Local Financial Commitment narrative; review and refine key messages

Land Use/Economic Dev. Update

...

Land Use and Econ. Development Update

- Drafted these sections of the report
- "Why CCL?" presentation captures key take-homes
- Received comments from STA/City; currently revising.



Outreach Update

...

Outreach and Communications Update

- Finalized presentation for community events (“Why CCL?”)
 - Share with your friends!
- Open Houses (2 this spring, one during the summer)
 - **March 9th – Gonzaga open house**
 - Share station designs later in spring/summer
- Interactive map
- Video

Letters of Support

- Have developed templates for use by partners, stakeholders, and community organizations
- We need your help!
- Several organizations and individuals have signed or are tailoring letters of support for the CCL



Station Location Outreach

- Since the last meeting, staff have been meeting with key stakeholders throughout the downtown core
 - Centennial Properties
 - RenCorp Realty
 - Cowles Publishing
 - KHQ
 - Downtown Spokane Partnership
 - DSP Brokers Meeting
 - GVD Commercial Properties, Inc.
 - Kiemle & Hagood

Next Meeting Date

• • •
March 28, 2017

Thank you!
...