

restaurant development + design

JANUARY/FEBRUARY 2016

Project Profile:
NINEBARK

page 46

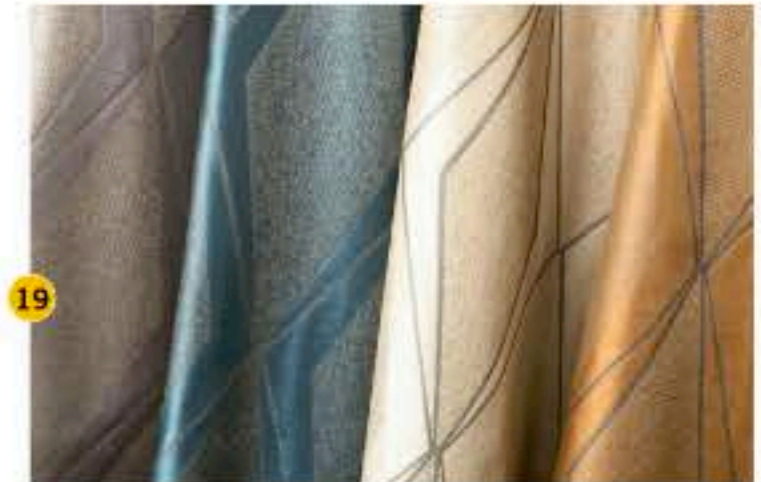
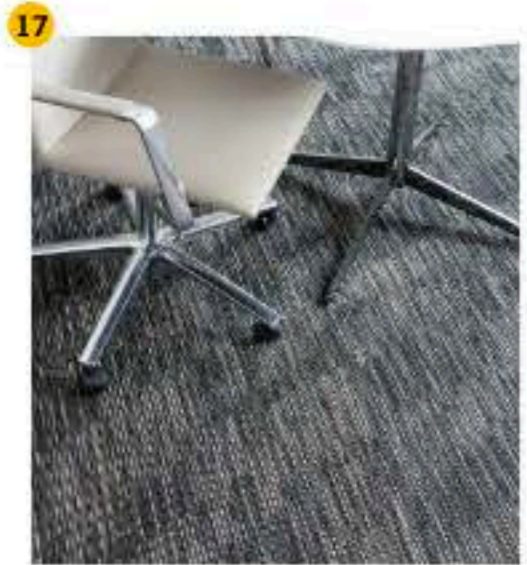
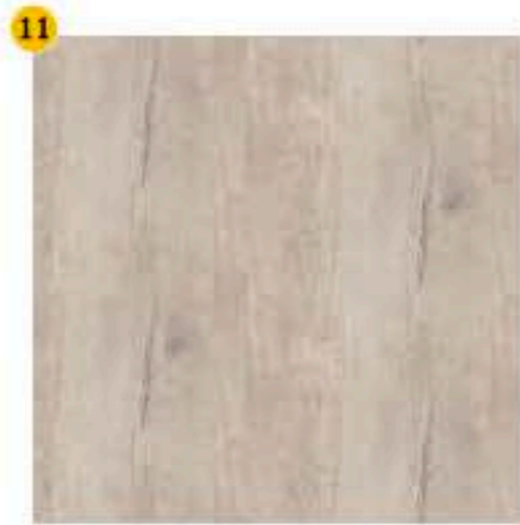
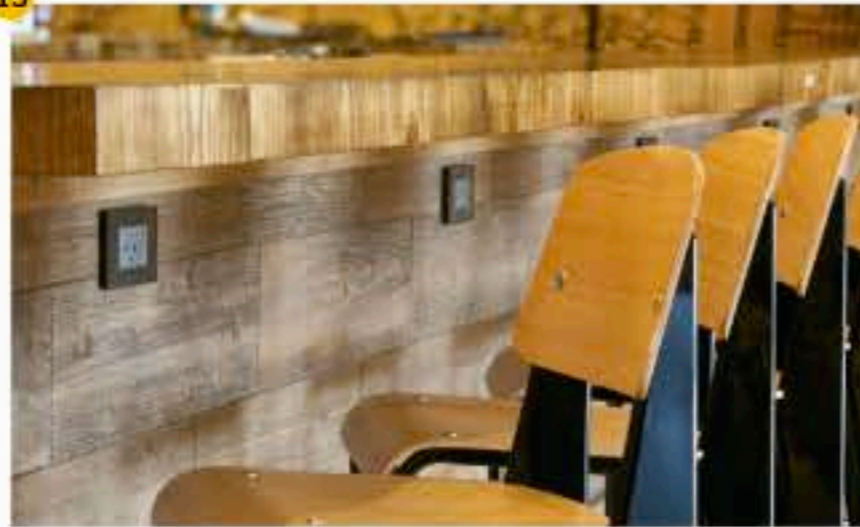
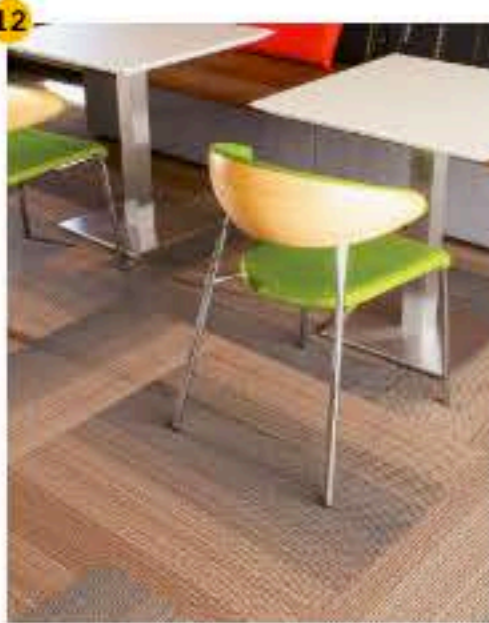
Multiuse Spaces Appeal
to Multipurpose Guests

page 28

Good Bones

page 36

Solutions Center



11. Formica Corporation's SurfaceSet
SurfaceSet 2016 is a compilation of 35 new Formica Brand products. Curated for commercial spaces, the three palettes that form SurfaceSet originate in nature and include such options as weathered beamwood (seen here). www.formica.com

12. J+J Flooring Group's Kinetex
Kinetex is a textile composite flooring that combines the attributes of a soft-surface flooring with the performance characteristics of a hard surface. Kinetex can withstand 5 million foot traffic events with minimal wear, per the maker. The flooring resists bleaching, which makes sanitizing and spot cleanings easier. The line is also slip resistant and can help reduce noise. www.jjflooringgroup.com

13. Legrand's Hubbardton Forge Line of Wall Plates
Legrand and Hubbardton Forge teamed up to create the Hubbardton Forge line of six lustrous metal wall plates forged by fire. For those operations wanting to provide operators with the opportunity to charge their mobile devices, these wall plates provide an aesthetic option that complements a variety of restaurant styles. The wall plates come in six finishes: black, natural iron, mahogany, dark smoke, burnished steel and bronze. The wall plates are compatible with light switches and outlets in Legrand's adorne collection by Legrand. www.legrand.us

14. LiteTronics Professional Series LED White Light Bulbs
This line of white light bulbs includes LED PAR lamps, BR/R, MR and Omni A-19 models. All eight

models fit new and retrofit installations in commercial, institutional and industrial interiors. LED PAR has uniform E26 medium screw-base ends that fit any standard new or existing PAR fixture housing. The MR series comes in 3.5w and 7w versions, and fit gimbal ring and other MR types. LED BR/R reflector bulbs feature sleek, contemporary designs with wide-perimeter frosted lenses and no "hot spots." LED Omni A-19 looks like A-19 incandescents but operates without the heatsinks and cooling fins. Light distribution is 300 degrees, spread evenly in all directions. www.litetrionics.com

15. Meyda Custom Lighting's Optyka-Lite Chandel-Air Chandelier
The Smythe Quarrystone Optyka-Lite Chandelier both lights specific areas and uses its fan feature to help keep spaces cool. The Optyka-Lite diffuser provides the warmth of ultra-thin Natural Stone and is complemented with Wrought Iron

finished hardware. During warmer periods, the fan pushes down a windchill that circulates to keep the space cool and comfortable. In cooler times, the fan reverses to pull the room air toward the ceiling and force the warm air back down and circulate to create warmth. www.meyda.com

16. MityLite's Galleria Collection of Seating
Developed with Avenue Interior Design, The Galleria Collection of seating features five chair designs. The stackable chairs feature durable, lightweight construction. The five styles feature multiple leg and finish options. www.mitylite.com

17. Philadelphia Commercial's Simple Mechanics Line of Commercial Carpeting
Inspired by the effective building blocks of

simple machines, The Simple Mechanics Collection comes in 14 neutral colors and a pair of 18-inch-by-36-inch carpet tiles: Straight Shift and Shifting Gears. Straight Shift is an unstructured open weave pattern made of vertical and horizontal lines that come together to create subtle movement, offering designers a textured visual. Shifting Gears is an interpretation of the uncomplicated inclined plane. Diagonal elements are balanced by irregular striping to create faceted shapes and angles like those used in modern architecture. www.philadelphia-commercial.com

18. Robert Allen's Naturals Multi-Purpose Series
The Naturals Multi-Purpose series features fashion-forward embroideries and embellishments that radiate a unique, handcrafted aesthetic. Patterns of note include: Benchi, a multicolored embroidery, featuring a suzani medallion;

Carbuckle, a sophisticated lattice design with a high-end, silky look; Hidarka, which combines applique and embroidery techniques to create a modern abstract design; Sumona, which exudes luxury with an all-over shimmery embroidery on a cotton ground; and Vangali, which alternates colors in its embroidered squares to give its open lattice pattern a pixelated effect. www.robertallendesign.com

19. Stacy Garcia's Ensemble Textile Line
The Ensemble line of textiles takes inspiration from the dynamic and collaborative nature of jazz and classical music. Ensemble features an assortment of textured and decorative sheers, silk draperies, detailed prints, jacquards and a linen-like blackout. Comprised of 12 patterns and 56 colorways, the new collection offers a variety of designs to enhance a variety of spaces. www.stacygarciainc.com



18



19

finished hardware. During warmer periods, the fan pushes down a windchill that circulates to keep the space cool and comfortable. In cooler times, the fan reverses to pull the room air toward the ceiling and force the warm air back down and circulate to create warmth. www.meyda.com

16. MityLite's Galleria Collection of Seating

Developed with Avenue Interior Design, The Galleria Collection of seating features five chair designs. The stackable chairs feature durable, lightweight construction. The five styles feature multiple leg and finish options. www.mitylite.com

17. Philadelphia Commercial's Simple Mechanics Line of Commercial Carpeting

Inspired by the effective building blocks of

simple machines, The Simple Mechanics Collection comes in 14 neutral colors and a pair of 18-inch-by-36-inch carpet tiles: Straight Shift and Shifting Gears. Straight Shift is an unstructured open weave pattern made of vertical and horizontal lines that come together to create subtle movement, offering designers a textured visual. Shifting Gears is an interpretation of the uncomplicated inclined plane. Diagonal elements are balanced by irregular striping to create faceted shapes and angles like those used in modern architecture. www.philadelphia-commercial.com

18. Robert Allen's Naturals Multi-Purpose Series

The Naturals Multi-Purpose series features fashion-forward embroideries and embellishments that radiate a unique, handcrafted aesthetic. Patterns of note include: Benchi, a multicolored embroidery, featuring a suzani medallion;

Carbuckle, a sophisticated lattice design with a high-end, silky look; Hidarka, which combines applique and embroidery techniques to create a modern abstract design; Sumona, which exudes luxury with an all-over shimmery embroidery on a cotton ground; and Vangali, which alternates colors in its embroidered squares to give its open lattice pattern a pixelated effect.

www.robertallendesign.com

19. Stacy Garcia's Ensemble Textile Line

The Ensemble line of textiles takes inspiration from the dynamic and collaborative nature of jazz and classical music. Ensemble features an assortment of textured and decorative sheers, silk draperies, detailed prints, jacquards and a linen-like blackout. Comprised of 12 patterns and 56 colorways, the new collection offers a variety of designs to enhance a variety of spaces.

www.stacygarciainc.com