

# Hospitality Interiors

INTERIOR DESIGN FOR HOTELS, RESTAURANTS, BARS & CLUBS

Issue 61 | September-October 2015



Suvlaki

## STACY GARCIA COLLABORATES WITH ICON FURNITURE

Known for creating both eclectic and functional products for hospitality, Stacy Garcia of her global brand Stacy Garcia, Inc. has launched The Chelsea Collection – a compilation of furniture pieces that celebrate the upbeat neighborhood in New York City.

The Chelsea Collection by Stacy Garcia for Icon Furniture features statement pieces such as an engineered wood-grain headboard, all-in-one



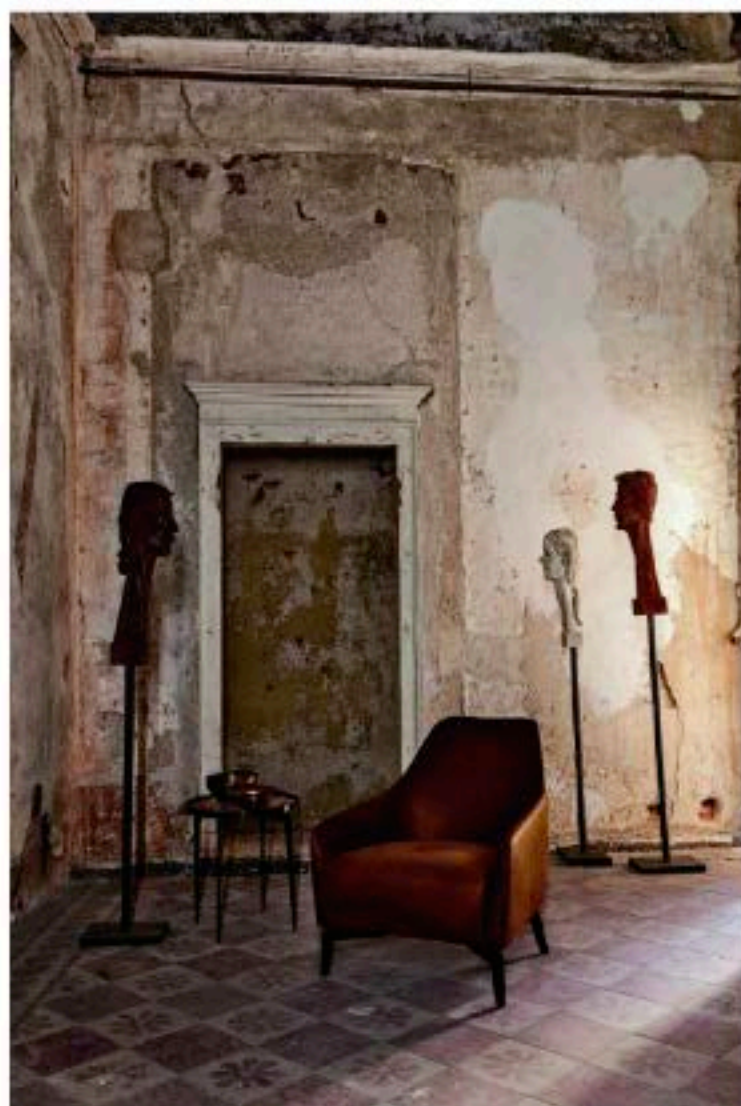
desk media hutch, and a nightstand with two-toned wood accents and detailing on the feet. Mitered corners and gently tapered legs blend with decorative elements, creating a fresh take on traditional form.

"We sought to create elegant, versatile pieces

that take cues from frames found throughout art galleries in New York City's Chelsea District, developing a collection that embraces their mitered edges," says Stacy Garcia.

W [stacygarcia.com](http://stacygarcia.com)

W [iconfurniture.com](http://iconfurniture.com)



## ALIVAR PRESENTS ITS CÉLINE AND DENISE ARMCHAIRS



Two new armchairs Céline and Denise, both designed by the architect Giuseppe Bavuso, have become part of ALIVAR Home Project collection. Characterised by a well-finished minimalist design, these products capture the elegance and coherent style that have always distinguished the Tuscan company and made it a worldwide modern furniture icon.

The elegant Céline armchair is optimised for comfort, with a roomy padded seat featuring a memory foam layer. The Denise, meanwhile, is a

glamorous yet minimalistic design.

Thanks to its versatility, Denise can be placed in different rooms, both for the residential and the contract sector.

The steel frame is upholstered in cold shaped polyurethane foam, class 1M, while the legs are in chrome-plated die-cast aluminium or black nickel. The seat cushion is made of foam and Dacron to ensure ergonomics and comfort at the same time. Denise can be customised with a leather or fabric cover, available in a wide variety of colours.

W [alivar.com](http://alivar.com)

## STACY GARCIA COLLABORATES WITH ICON FURNITURE

Known for creating both eclectic and functional products for hospitality, Stacy Garcia of her global brand Stacy Garcia, Inc. has launched The Chelsea Collection – a compilation of furniture pieces that celebrate the upbeat neighborhood in New York City.

The Chelsea Collection by Stacy Garcia for Icon Furniture features statement pieces such as an engineered wood-grain headboard, all-in-one



desk media hutch, and a nightstand with two-toned wood accents and detailing on the feet. Mitered corners and gently tapered legs blend with decorative elements, creating a fresh take on traditional form.

“We sought to create elegant, versatile pieces

that take cues from frames found throughout art galleries in New York City’s Chelsea District, developing a collection that embraces their mitered edges,” says Stacy Garcia.

W [stacygarcia.com](http://stacygarcia.com)

W [iconfurniture.com](http://iconfurniture.com)