



## **BRILLANT LIGHT™**

**Single ----- (with a 921 Bulb) 3000**

**Double ----- (with two 921 Bulbs) 3001**

**Single ----- (with a LED 150 LMS) 3002**

**Double --- (with two LED 150 LMS) 3003**

**INSTALLATION AND OPERATIONS  
INSTRUCTIONS**

## THANK YOU FOR CHOOSING THE BRILLIANT LIGHT 3000™!

We are very pleased that you have chosen our product to enhance your outdoors experience! At Starlights, Inc., we are passionate about improving your safety, security, and convenience. We feel that the **Brilliant Light 3000™** series represents a giant step forward! Developed and designed in the United States, the **Brilliant Light 3000™** series has the versatility to adapt to differing interior lighting conditions with upgrade modules. We are confident that you will be completely satisfied with your new **Brilliant Light 3000™** series for years to come.

Jason P. Weaver  
President, CEO  
Starlights, Inc.

---

**BULB REQUIREMENT** for the **Brilliant Light 3000™** series - **Incandescent “921” Bulb** or the **NEW “Revolution LED line of Bulbs”**. This new line of **Brilliant Light 3000™** series fixtures and LED Bulbs can be found in your local RV or Marine dealer.

---

### OPTIONAL ACCESSORIES

- **BL-3004 Dimmer Dial Module**
  - **BL-3005 LED Night Light Module**
  - **BL-3006 Motion Detection Module**
  - **BL-3007 PCB Control Board Module**
  - **BL-3008 Day/Night Sensor Module**
  - **BL-3009 Replacement Lens**
  - **BL-3010 Back Plate Up-Grade Kit**
  - **BL-250 Replacement LED Board**
  - **BL-300 Replacement LED Board**
- 

### INSTALLATION & SAFETY INSTRUCTIONS

For the **Brilliant Light 3000™** series Interior Lighting Fixture.

#### IMPORTANT SAFETY INFORMATION

- ✓ Disconnect battery before installing or replacing the **Brilliant Light 3000™** series Interior Lighting Fixture.
- ✓ A person familiar with the installation of 12 Volt lighting products is recommended for the installation of this product.
- ✓ This **Brilliant Light 3000™** series Interior Lighting Fixture is designed to be used only with 12 DC Power [Automotive type], any modifications of the unit may result in a hazard and will VOID the warranty.
- ✓ The **Brilliant Light 3000™** series Interior Lighting Fixture must be installed in accordance with any state and national codes.
- ✓ Please do not attempt to open the Upgrade Modules, as there are no serviceable parts inside and doing so WILL VOID the warranty.
- ✓ Please read all of the **Brilliant Light 3000™** series installation instructions before installing the fixture.

#### IMPORTANT NOTES

- Using or attaching other accessories or devices can cause a hazard, may damage the unit, and **WILL VOID the WARRANTY**

## INSTALLING The Brilliant Light 3000™ series

### IMPORTANT-DISCONNECT THE BATTERY

- STEP 1:** Remove the old ceiling lighting fixture and clean area of all old sealer, dirt, etc.
- STEP 2:** Attach the WHITE wire marked positive (+) on the **Brilliant Light 3000™** series fixture to the positive wire (+) coming out of the ceiling opening inside the RV.
- STEP 3:** Attach the WHITE wire marked negative (-) on the **Brilliant Light 3000™** series fixture to the negative wire (1) coming out of the ceiling opening inside the unit.
- STEP 4:** Re-use the original screws from your old fixture, to attach the **Brilliant Light 3000™** series fixture to the interior of the unit.
- STEP 5:** Replace the **Brilliant Light 3000™** series Lens.

---

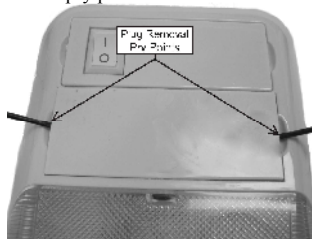
### MODULE UPGRADE DIRECTIONS for the Brilliant Light 3000™ series

---

The following Modules can be added to the **Brilliant Light 3000™** series.

- **BL-3004 Dimmer Dial Module**
- **BL-3005 Night Light Module**
- **BL-3006 Motion Detection Module**
- **BL-3007 PCB Control Board Module**
- **BL-3008 Day/Night Sensor Module**

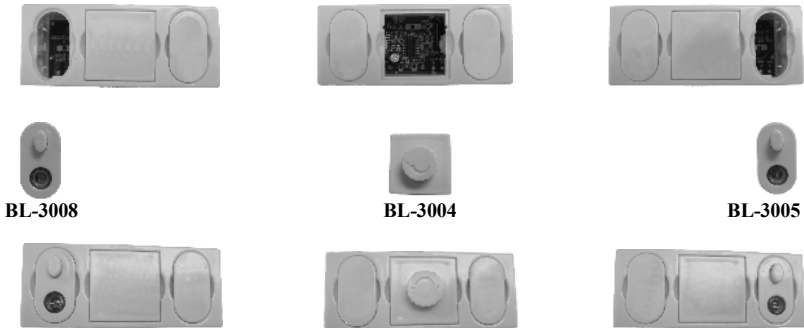
**STEP 1:** Locate the PCB cover pry points as shown below.



**STEP 2:** the plug and replace with the appropriate upgrade module.



**STEP 3:** Using the pry points, remove the small plug(s) from the control module. Then install the new function module(s) into the **BL-3007 PCB Control Board Module**. Once inserted into the slot, press firmly until it is flush with the top surface of the **BL-3007 PCB Control Board Module**. You will feel a slight 'click' when the module snaps into place. **NOTE:** the PCB and module inserts are equipped with guided grooves. If the module does not fit into the PCB, simply turn it around and try again.



**BL-3007 PCB Control Board Module** showing the function modules installed properly.

**STEP 4:** One **BL-3007 PCB Control Board Module** must be installed in order to install any upgrade module, including the **BL-3006 Motion Detection Module** as shown below.





**Brilliant Light 3000™** series showing all function modules installed properly.

## LIMITED WARRANTY

This product is warranted free from defects in material and workmanship for a period of one year. If a defect in material or workmanship occurs, call 1-800-883-5444 for instructions on how to have the defective product repaired, or replaced, free of charge.

### LIMITATIONS

- This warranty is extended only to the original purchaser of the product.
- This warranty only covers the assembled motion lighting fixture.
- Unauthorized service to, or modification of this product will void the warranty in its entirety.
- A **purchase receipt or other approved proof of purchase** is required before warranty service is rendered.
- This warranty is expressly in lieu of all other warranties, expressed or implied, including any warranty, representation or condition of merchantability or that the products are fit for any particular purpose or use, and specifically in lieu of all special, indirect, incidental, or consequential damages, including but not limited to, any loss arising out of any breach of this warranty, as allowed by your state of domicile.
- This warranty gives you specific rights, you may also have other rights that vary from state to state.

### NOT COVERED

- Failure of the product as a result of an accident, abuse, negligence, alteration, faulty installation, or any other failure not relating to faulty material or workmanship.
- Reimbursement for inconvenience, installation, setup, time, loss of use, postage, or unauthorized service.

If it is necessary to return any Starlights, Inc. product, please get a **RETURN CONFIRMATION NUMBER** by calling (805) 453-7131 or 800-883-5444. You can also reach the Starlights Warrantee replacement and Shipping Department by e-mailing David Thomason at [david.thomason@starlightsinc.com](mailto:david.thomason@starlightsinc.com). Then send the unit back in its original box with all original parts, as well as a copy of your receipt and a brief explanation of what kind of failure you experienced. Please send to the returns address below.

### GENERAL CORRESPONDENCE

Starlights, Inc.  
PO Box 80246  
Goleta, CA 93118  
Phone (800) 883-5444  
Fax (805) 685-3754



### RETURNS:

Starlights, Inc.  
283 Pamela Way  
Unit 104  
Buellton, CA 93427

THANK YOU FOR  
YOUR TRUST IN US!

For technical issues:  
Gregg Wilson  
[gregg.wilson@starlightsinc.com](mailto:gregg.wilson@starlightsinc.com)  
(805) 403-6533