

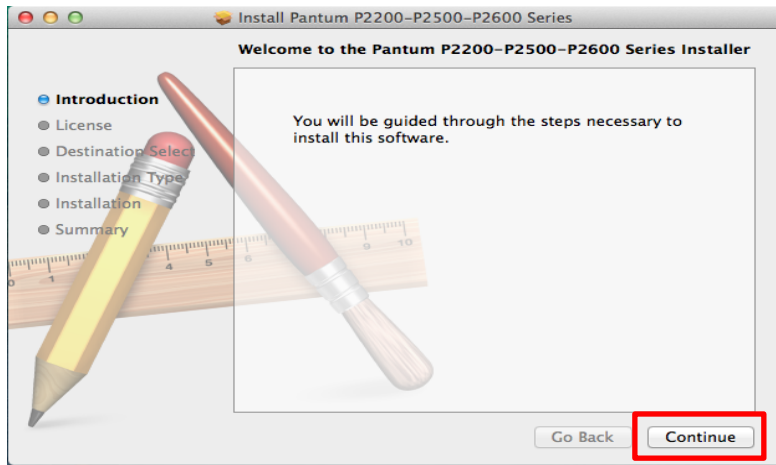
# P2500W Wi-Fi Installation Guide for MAC

There are two ways to configure Wi-Fi settings on MAC .One through the **Wi-Fi configuration tool** and the other through **WPS**.

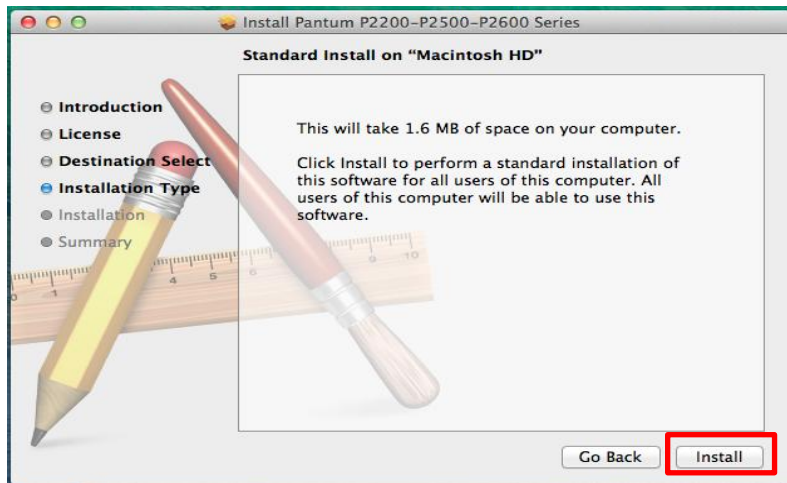
## I.Wi-Fi Configuration Tool :

\*Turn on the printer and connect the PC and the Printer via USB.

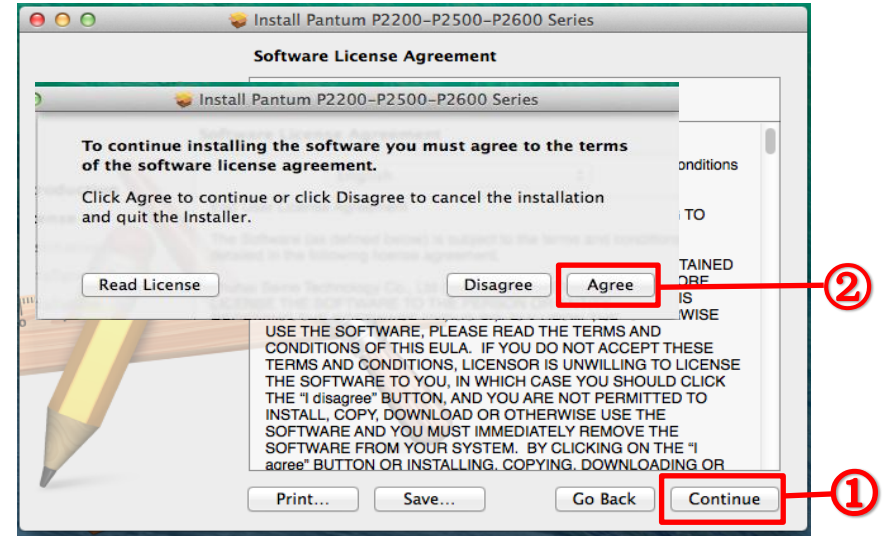
1. Run the MAC driver setup file, then Click“Autorun”.
2. Introduction - Click"Continue".



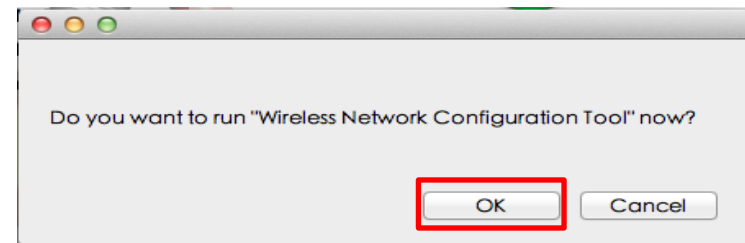
4. Installation Type - Click"Install".



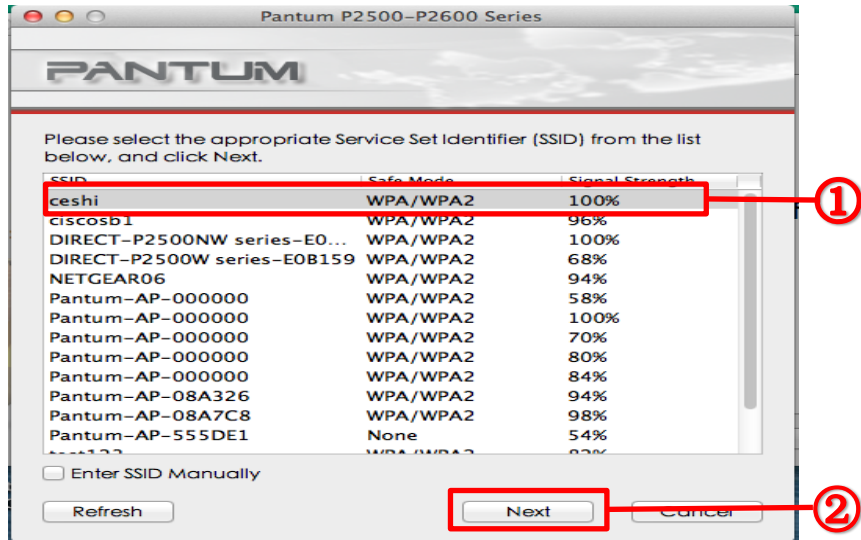
3. License - Click "Continue" → Click"Agree".



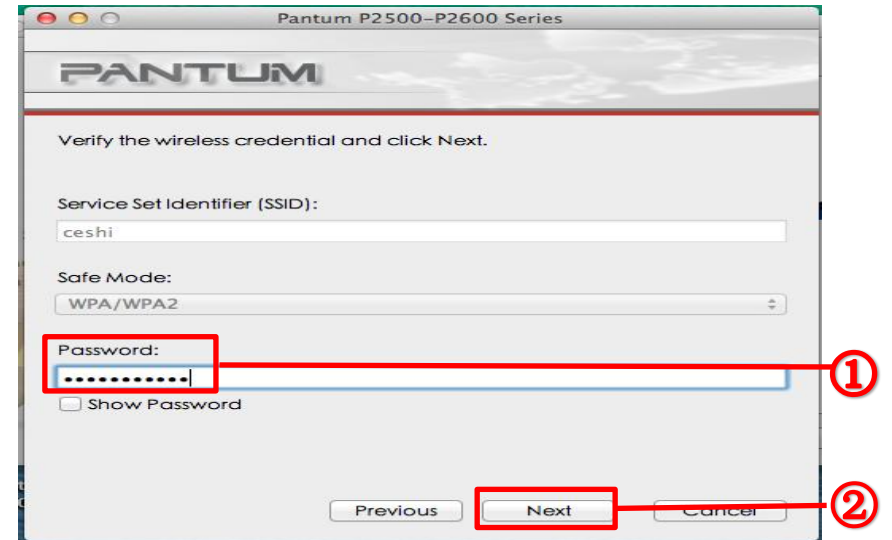
5. Click"OK".



6. Select the SSID of your Router and Click "Next".



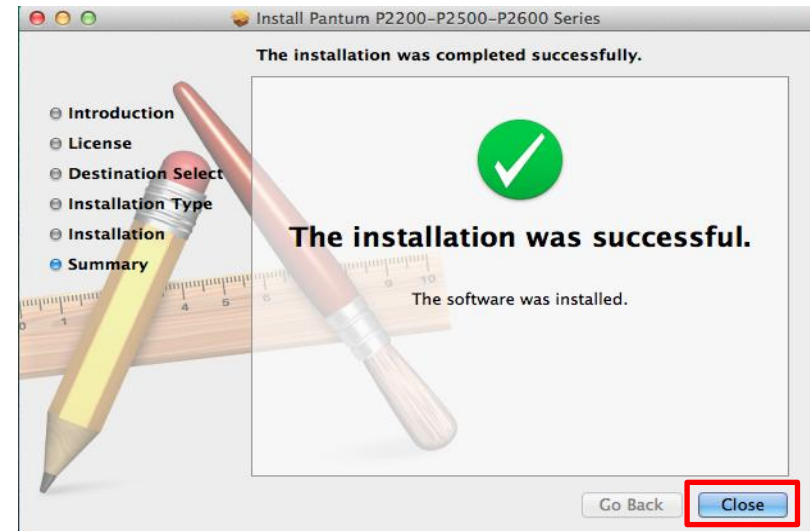
7. Input the Wi-Fi password and then Click "Next".



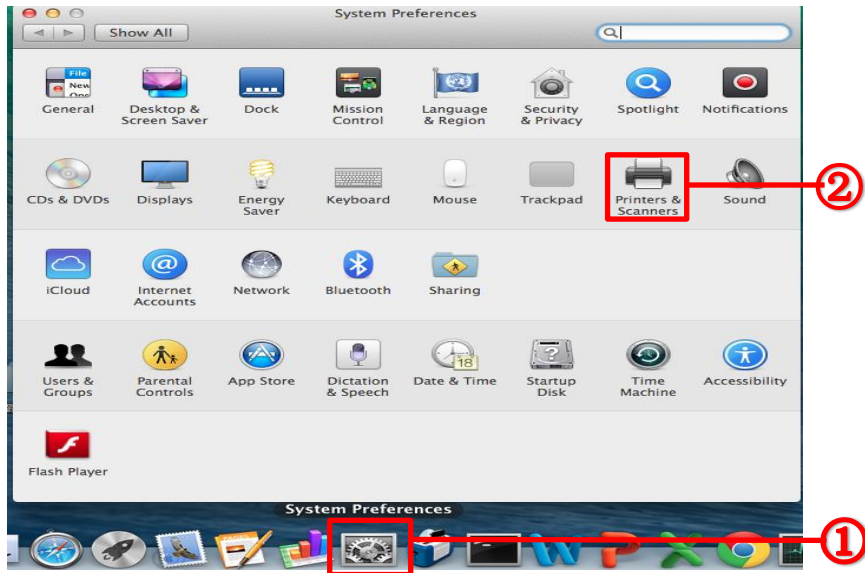
8. Click "Done".



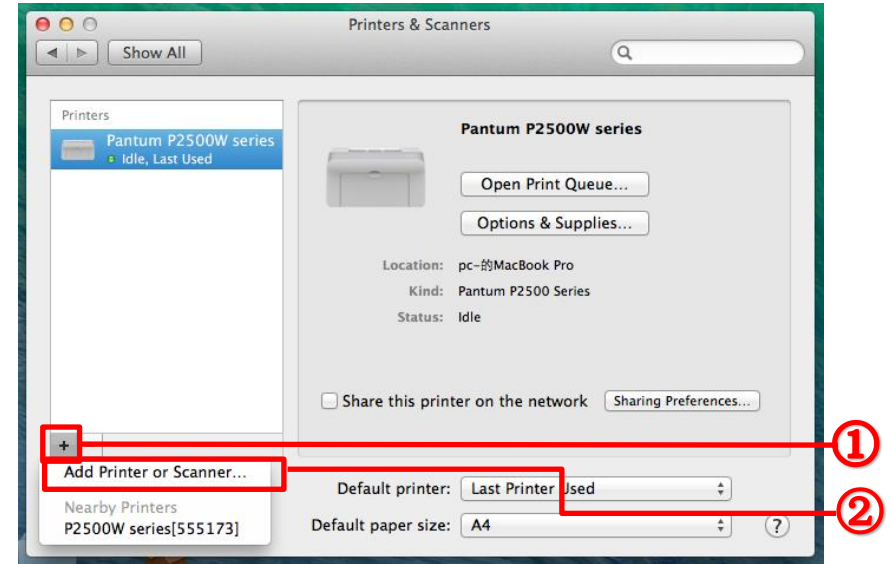
9. Click "Close".



10. Click "System Preferences" icon → click "Printers & Scanners".

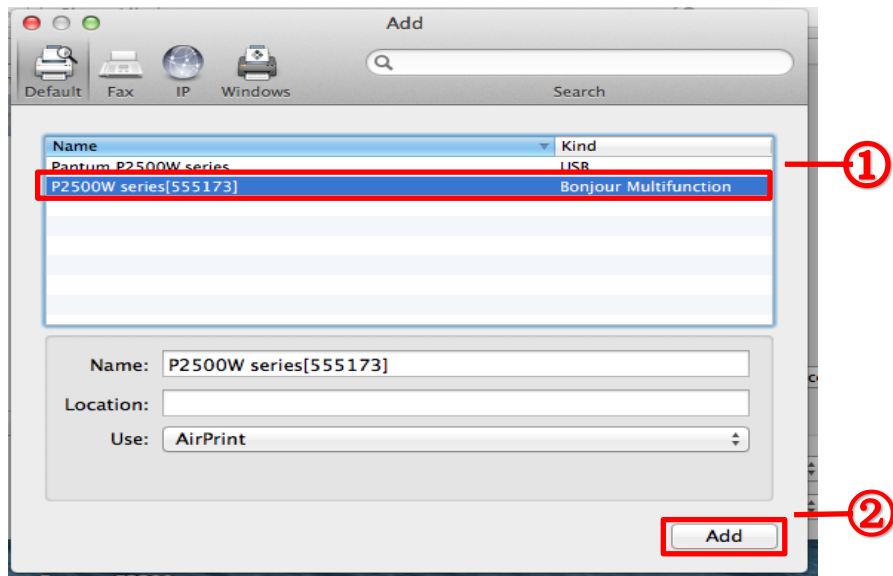


11. Right-click on the "+" button → select "Add Printer or Scanner".

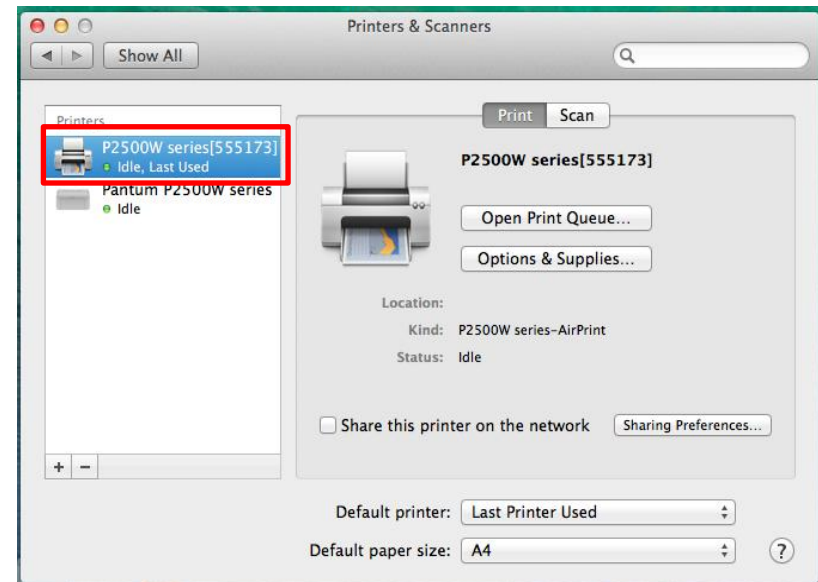


12. Select the row which contains "P2500W series {Bonjour name}, Bonjour Multifunction" → Click "Add".

Please Note: You can check your Printer's Bonjour name on the Information page. You can print an Information page by long pressing the "continue" button.



13. Your printer has been successfully configured with Wi-Fi settings. Now You can print via Wi-Fi.



## II.WPS:

\*Turn on the printer and make sure your Printer and the Router are ready.

1. Press the Wi-Fi button for 2 seconds until the first LED indicator flashes green.

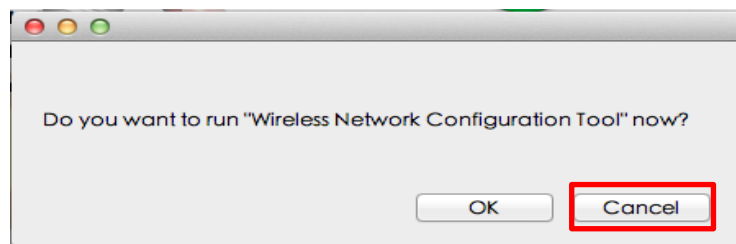


2. Then press the WPS button on the router within 2 minutes, until the first LED indicator shows green on the printer.

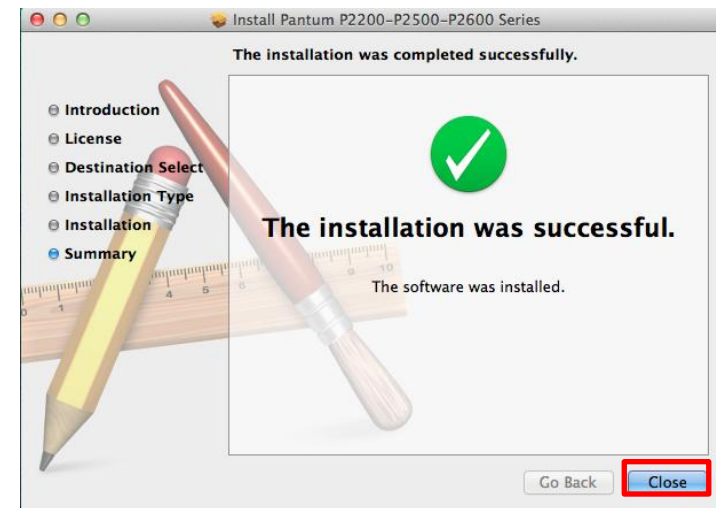


3. Follow the same installation way from Step 1- Step 4 on the **Wifi Configuration Tool** method.

4. Select "Cancel"



5. Click "Close". Your Installation is successful.



6. Now, setup the system preferences by following the same steps from 10 -13 of the **Wifi Configuration Tool** method.