



AMI GENERAL MUSIC (5th/6th Grade)

Dear students/parents,

Hello all! I hope everyone is well and taking the necessary precautions as this horrible virus makes its circuit through our land. I ask that you please stay safe, stay home if you can, and practice social distancing. I care about all of you and your well being. Together, we can diminish the impact of COVID-19.

In this packet, I have attached information regarding the treble and bass clef. This resource can be used as a guide as you complete your assignment. **WHAT IS THE ASSIGNMENT?** I'm glad you asked. All I want students to do for this week is to make an acronym (saying) for the lines and spaces of the treble and bass clef. (That means that students should create 4 acronyms). Please do not use the acronyms provided on the sheet attached. Be creative and come up with your own. This will be a great opportunity for students and parents to gain more knowledge regarding music. This assignment does not have to be turned in.

If you would like more explanation/help or supplemental information regarding the treble and bass clef, below are links to YouTube videos that I have made to help explain each clef and the staff in detail. Here are the links:

“Musical Clefs: Treble & Bass Clef: What Do They Mean?”

<https://youtu.be/VuOWkakPRjs>

“Staff: Lines & Spaces of the Treble Clef”

https://youtu.be/Byhd2J_EBvo

If you have any questions or concerns, do not hesitate to send me an email. I hope all is well and stay safe and healthy!

An die Musik,

Josiah L. Burns

Choir Director/General Music Teacher

Magnet Cove School District

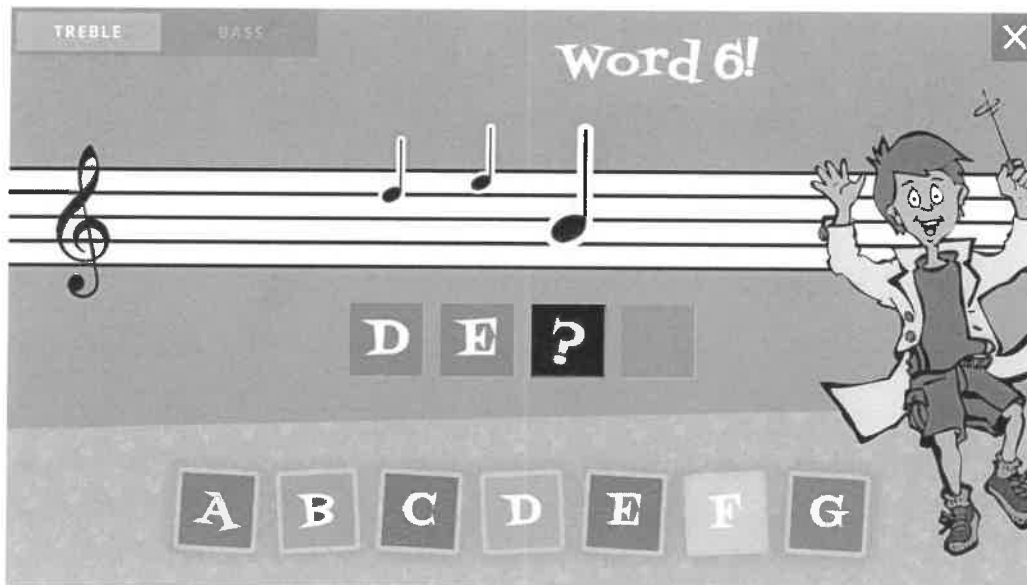
472 Magnet School Rd, Malvern, AR 72104

Phone: (501)-337-9293 or (501)-332-5466 ext. 315

E-mail: josiah.burns@magnetcove.k12.ar.us

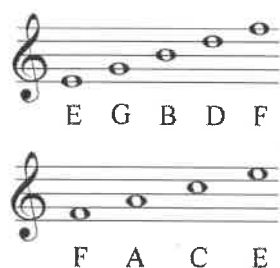
Note Names

Play Note Names

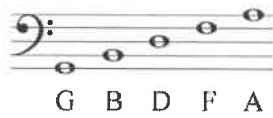


Music is written down using notes on a staff.

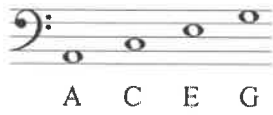
Notes are symbols used for musical sound. A staff is a set of five lines and four spaces on which notes are written to indicate their pitch.



The Treble Clef is the top set of lines, the staff, in a piece of sheet music. It shows you the notes to play with your right hand. The lines and spaces have letter names. The spaces are labeled FACE starting with the first space at the bottom. The lines are labeled EGBDF (Every Good Boy Does Fine) starting at the bottom line and going to the top line.



G B D F A



A C E G

The Bass Clef is the bottom set of lines, the staff, in a piece of sheet music. These are the notes that you play with your left hand. The spaces are labeled ACEG (All Cows Eat Grass). The lines are labeled GBDFA (Good Boys Deserve Fudge Always) starting at the bottom line and going up to the top line.

Use the letters of the notes to form words. How many words can you spell?

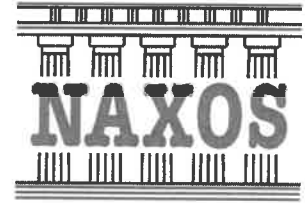
Classics for Kids® is supported by:



MARGE & CHARLES J. SCHOTT FOUNDATION



CHARLES H. DATER
FOUNDATION



[Home](#) | [Past Shows](#) | [Podcast](#) | [Of Note](#) | [Composers](#) | [Games](#) | [Music](#) | [Parents](#) | [Teachers](#)

[Search](#) | [Our Bulletin Board](#) | [Links](#) | [Contact Us](#) | [About Classics for Kids](#) | [Privacy Policy](#)

©2020 Cincinnati Public Radio, Inc.