



Friday Forecast

Mon Cloudy 84
Tue Cloudy 85

May 21 - 22

May 21 K - 7 Field Day 1:30
Parents are Invited
CES Spirit Shirts & athletic shorts
Sunscreen, Hats & Sunglasses



May 22 Last Day of School
11:30 Dismissal



**LUNCH
MONEY**

**All Meal
Accounts
must be
paid in full
by May 21.**

SUMMER m A + π CHALLENGE

Check out page 2 to sign up
online for this new opportunity!
You can get the Lexile and
Quantile scores from the State
Assessment scores that will be
sent home with grade cards.

Summer Safety

Please review summer safety documents
using these links: [Water Safety](#)
[Sun Exposure](#)
[Bicycle Safety](#)

Breakfast Menu Changes:

May 21 Pancakes
May 22 Breakfast Pizza

Please check out
the Lost & Found
pile in the
cafeteria.
All unclaimed
items will be
donated May 23.



May 24 - July 22 Office Closed
July 23 - 30 Online Enrollment
August 1 - 2 Fees Collected & Used Uniform Sale

CES needs content to display on our
electronic marquee sign during the
summer months!

Anyone can have a custom post on
the marquee:

- ⇒ Birthdays
- ⇒ Weddings
- ⇒ Anniversaries
- ⇒ Business Advertisements
- ⇒ Celebrations

Email: Christine.aschenbrenner@usd267.com

We ask for a donation to help cover expenses.

Happy Summer!

From the CES Staff



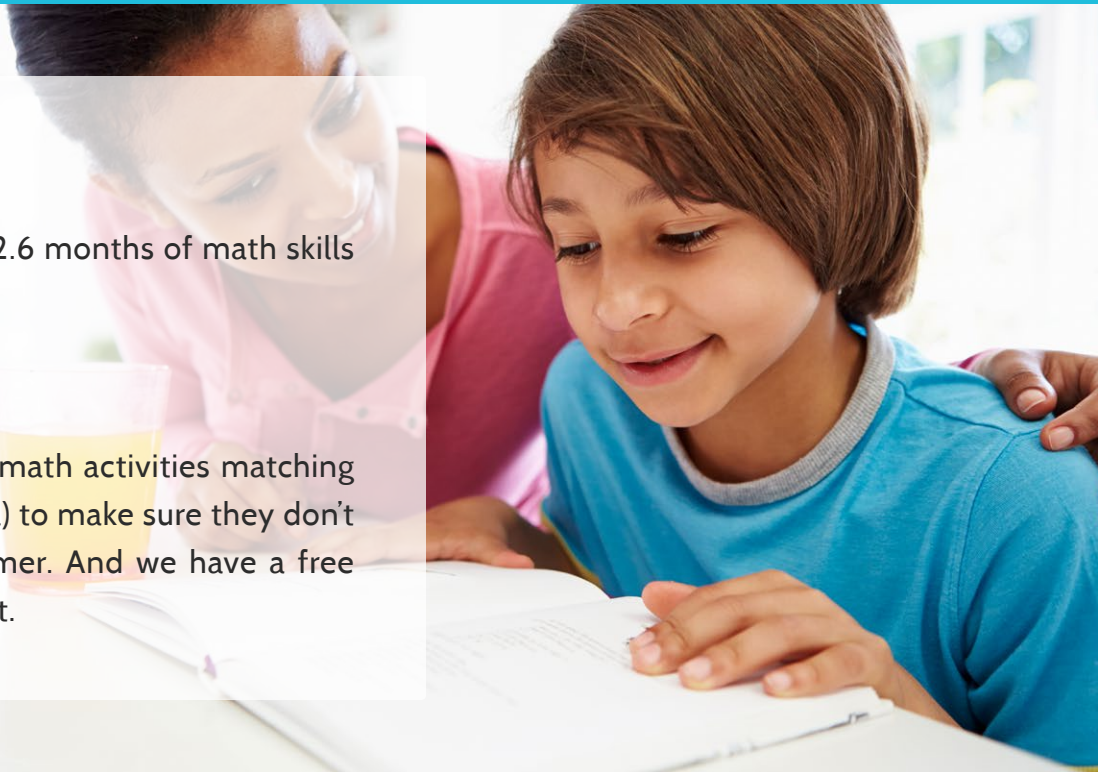
Fight Summer Math Loss!

THE PROBLEM

On average, students lose 2.6 months of math skills over the summer months.¹

THE SOLUTION

Have your child engage in math activities matching their ability (Quantile® level) to make sure they don't lose ground over the summer. And we have a free tool to help you do just that.



SUMMER CHALLENGE

What is the Summer Math Challenge?

The Summer Math Challenge is a FREE math program designed to help kids retain math skills learned during the previous year. The six-week program offers daily emails with fun activities and resources at each student's ability level.

Who is it designed for?

The Summer Math Challenge is designed for students who have just completed grade 1 through 8.

How do I sign up?

- 1 Go to [Quantiles.com/summer-math](https://www.quantiles.com/summer-math) to enroll your child.
- 2 Starting Monday, June 18th, check your inbox for daily emails with fun activities and resources.
- 3 Visit [Quantiles.com/summer-math](https://www.quantiles.com/summer-math) every day to read about weekly math concepts and earn badges.
- 4 When the program ends on Friday, July 27th, print an award certificate to celebrate your child's summer accomplishments!

¹Cooper, H., Nye, B., Charlton, K., Lindsay, J., & Greathouse, S. (1996). The effects of summer vacation on achievement test scores: A narrative and meta-analytic review. *Review of Educational Research*, 66(3), 227-268. Patall, Erika A., Harris Cooper, and Ashley Batts Allen. "Extending the school day or school year a systematic review of research (1985-2009)." *Review of educational research* 80.3 (2010): 401-436.

FREQUENTLY ASKED QUESTIONS

THE SUMMER MATH CHALLENGE uses Quantile measures to match students with ability-appropriate math resources and materials. Here are a few frequently asked questions about Quantile measures and how they work:

How do you get a Quantile student measure?

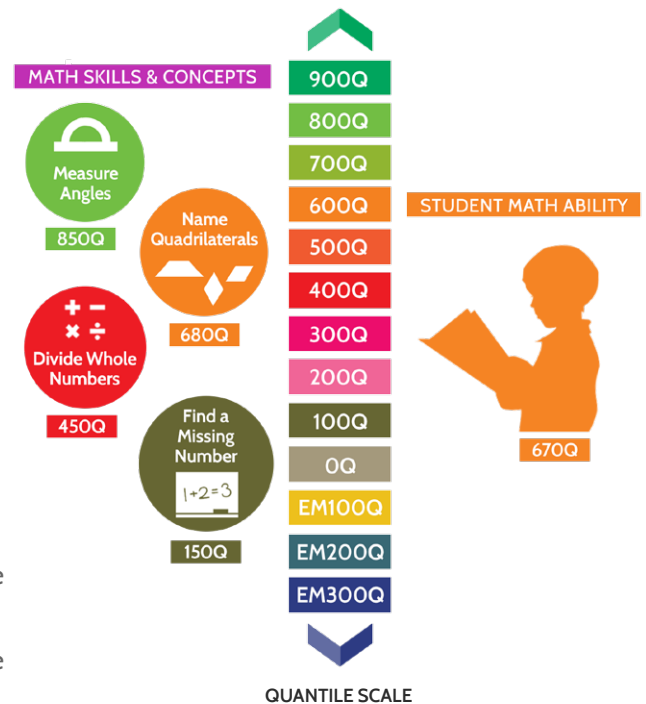
Quantile measures are available from many year-end state tests, as well as from other classroom tests and math programs.

How do math skills and concepts receive Quantile measures?

Over 500 mathematics skills and concepts have received Quantile measures. Quantile measures range from below 0Q for skills like compounding set quantities to above 1400Q for skills like modeling using trigonometric functions. The higher the Quantile measure, the more difficult the material. By identifying which mathematics concepts are present in math materials, we know how difficult those materials are and can assign a Quantile measure.

What is The Quantile® Framework for Mathematics?

The Quantile Framework for Mathematics uses the same scale to measure both the math skill level of your child and the difficulty of the math materials they encounter. The Quantile Framework reports your child's mathematical ability, as well as the difficulty of math material, as Quantile measures.



How do Quantile measures help promote learning?

Quantile measures identify the math materials your child is ready to learn. Because Quantile measures can be used to determine which skills and concepts build upon one another, they can help you pinpoint a particular skill a child is struggling with or provide guidance on skills to which the child should advance. Quantile measures also help monitor growth over time towards college and career readiness (1350Q) and beyond.



Want to learn more about the Quantile Framework for Mathematics?

VISIT [QUANTILES.COM](https://www.quantiles.com)