



**I X L Elem -**  
**Arkansas City USD 470**

6758 322nd Road, Arkansas City, KS 67005-9101  
 (620) 441-2055

Principal: **Sheryl Leeds**

District Accreditation Status: **Accredited**  
 ESSA Annual Meaningful Differentiation: **Approaching**  
 Grades: **PK-5**  
 Superintendent: **Ron Ballard**

**Demographics**

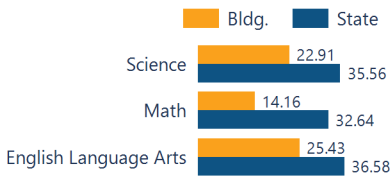


**259 Students**

- African American 3.09 %
- Hispanic 22.78 %
- Other 11.97 %
- White 62.16 %

**Academically Prepared for Postsecondary Success**

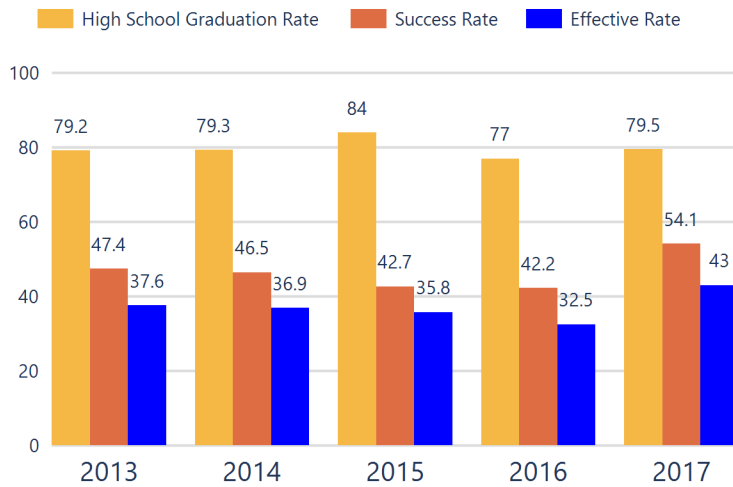
The percentage of students who scored at Levels 3 and 4 on the state assessment.



**District Kansans Can Star Recognition**

	Gold	Silver	Bronze	Copper
Academically Prepared for Postsecondary Success				
Graduation Rate				
Postsecondary Success				

**District Postsecondary Effectiveness**



**Kansans CAN lead the world!**  
 Graduation **95%**  
 Effective Rate 70-75%

**Five-Year Graduation Avg**  
**80%**

**Five-Year Success Avg**  
**47%**

**Five-Year Effective Avg**  
**37%**

**95% Confidence Interval for the Predicted Effectiveness Rate**  
**36.0 - 39.0%**

The numerator and denominator in the Five-Year Averages contain total student counts over five years (2012-2016).

- Graduation Rate:** The 4-year adjusted cohort graduation rate is the number of students who graduate in four years with a regular high school diploma divided by the number of students who entered high school as 9th graders four years earlier (adjusting for transfers in and out).
- Success Rate:** A student must meet one of the four following outcomes within two years of High School graduation.
  - Student earned an Industry Recognized Certification while in High School.
  - Student earned a Postsecondary Certificate.
  - Student earned a Postsecondary Degree.
  - Student enrolled in Postsecondary in both the first and second year following High School graduation.
- Effective Rate:** The calculated Graduation Rate multiplied by the calculated Success Rate.

**GRADUATION RATE**

The four-year adjusted cohort graduation rate is the percentage of students in a cohort, adjusted for transfers into and out of the school, district, or state, who graduate with a regular high school diploma within four years of entering high school.

**ATTENDANCE RATE**

Rate at which students are present at school, not including excused or unexcused absences.

**CHRONIC ABSENTEEISM**

Percentage of students who miss 10% or more of school days per year either with or without a valid excuse.

**DROPOUT RATE**

The dropout rate is calculated annually and reflects the number of seventh– twelfth grade students who drop out in any one school year. A dropout is any student who exits school between October 1 and September 30 with a dropout EXIT code AND does not re-enroll in school by September 30.

State: **School ESSA Expenditures Per Pupil**

**N/A** 87.5

Expenditures reflect those for the normal day-to-day operation of schools as reported by the Local Education Agency. The following expenditures are excluded: capital outlay, school construction and building improvements, equipment and debt services.

**\$9,609**

State: 94.5

**94.7%**

State: 13.9

**13.8%**

State: 1.4

**N/A**

**Click here for State Financial Accountability.**

State: **\$11,415**



School Academic Success

State Assessment scores are displayed by student subgroup over three years time in three subjects: Math, English Language Arts (ELA), and Science.

ALL STUDENTS

	2016-17			2017-18			2018-19		
	Math	ELA	Sci	Math	ELA	Sci	Math	ELA	Sci
Level 1	27.77	40.62	35.89	31.70	41.80	35.71	48.33	42.98	33.33
Level 2	45.23	33.59	41.02	47.96	36.06	30.95	37.50	31.57	43.75
Level 3	20.63	20.31	15.38	18.69	19.67	33.33	10.83	22.80	14.58
Level 4	4.76	3.90	7.69	1.62	2.45	0.00	3.33	2.63	8.33

FREE AND REDUCED LUNCH STUDENTS

	2016-17			2017-18			2018-19		
	Math	ELA	Sci	Math	ELA	Sci	Math	ELA	Sci
Level 1	30.30	44.55	40.00	32.60	41.30	36.11	51.68	44.04	32.35
Level 2	47.47	29.70	40.00	51.08	40.21	36.11	34.83	32.14	52.94
Level 3	18.18	20.79	13.33	14.13	16.30	27.77	8.98	21.42	5.88
Level 4	3.03	3.96	6.66	2.17	2.17	0.00	4.49	2.38	8.82

STUDENTS WITH DISABILITIES

	2016-17			2017-18			2018-19		
	Math	ELA	Sci	Math	ELA	Sci	Math	ELA	Sci
Level 1	52.50	58.53	64.28	63.41	70.73	46.66	63.41	60.97	64.28
Level 2	37.50	24.39	21.42	26.82	17.07	33.33	24.39	21.95	35.71
Level 3	7.50	12.19	7.14	7.31	9.75	20.00	7.31	17.07	0.00
Level 4	2.50	4.87	7.14	2.43	2.43	0.00	4.87	0.00	0.00

AFRICAN-AMERICAN STUDENTS

	2016-17			2017-18			2018-19		
	Math	ELA	Sci	Math	ELA	Sci	Math	ELA	Sci
Level 1	N/A	N/A	N/A	N/A	N/A	N/A	N/A	N/A	N/A
Level 2	N/A	N/A	N/A	N/A	N/A	N/A	N/A	N/A	N/A
Level 3	N/A	N/A	N/A	N/A	N/A	N/A	N/A	N/A	N/A
Level 4	N/A	N/A	N/A	N/A	N/A	N/A	N/A	N/A	N/A

HISPANIC STUDENTS

	2016-17			2017-18			2018-19		
	Math	ELA	Sci	Math	ELA	Sci	Math	ELA	Sci
Level 1	35.48	58.06	N/A	28.57	42.85	41.17	57.69	47.82	41.66
Level 2	48.38	29.03	N/A	50.00	50.00	47.05	34.61	43.47	41.66
Level 3	16.12	12.90	N/A	21.42	7.14	11.76	7.69	8.69	8.33
Level 4	0.00	0.00	N/A	0.00	0.00	0.00	0.00	0.00	8.33

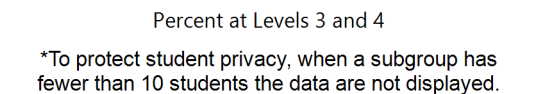
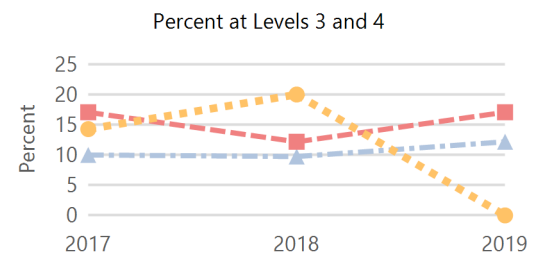
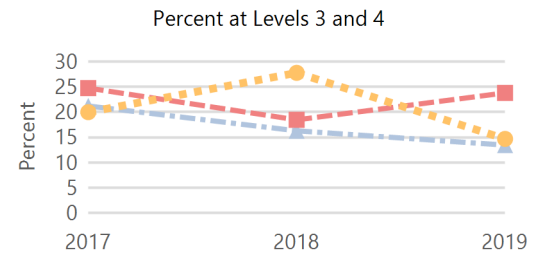
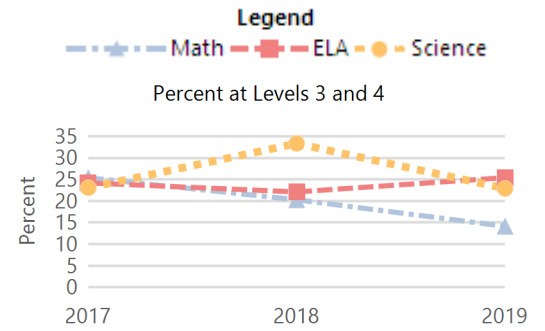
N/A: To protect student privacy, when a subgroup has fewer than 10 students, the data are not displayed.

ACT Performance (2018 School Year)

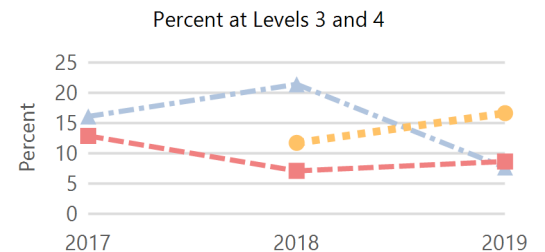
ACT is a national college admissions exam that includes subject level tests in English, Math, Reading and Science. Students receive scores that range from 1 to 36 on each subject and an overall Composite score. This report provides the average Composite score for the 2018 graduating seniors who took the ACT as sophomores, juniors, or seniors.

Note: Not all eligible students completed an ACT.

Academically Prepared for Postsecondary Success



\*To protect student privacy, when a subgroup has fewer than 10 students the data are not displayed.



Building

