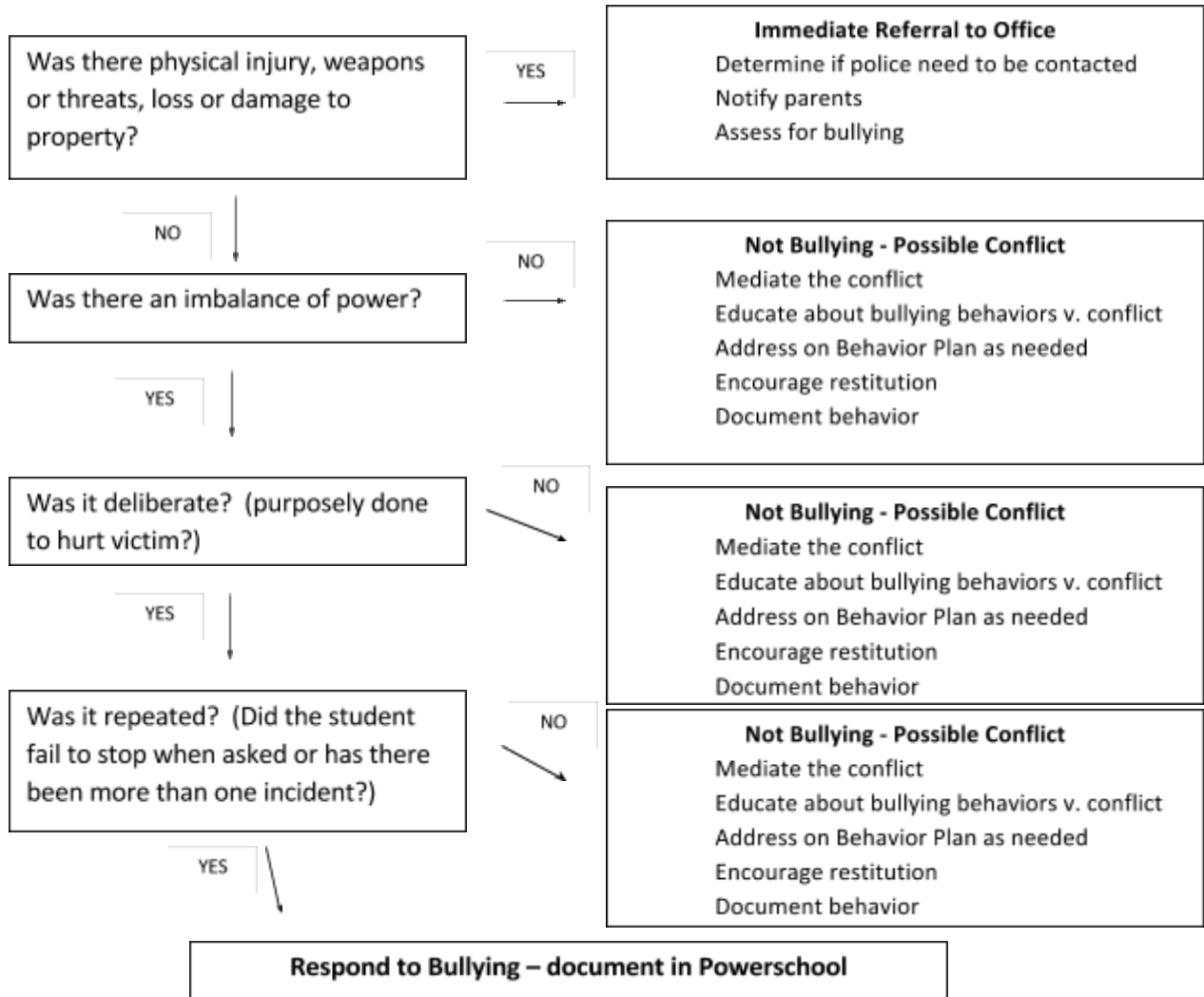


**USD 257 IOLA Definition of Bullying:** when a more powerful (physically, intellectually, socially, etc.) person hurts or frightens another person deliberately (on purpose), and repeatedly (again and again).  
Types of bullying that may occur: Physical; Verbal; Social; Cyber bullying.

### Bullying Assessment Flow Chart

Interview all students involved in the incident. Include alleged perpetrator, victim, bystanders, etc.



- Factors to Consider when Determining Consequences:**
- Age & Development (intellectual, social, emotional, etc.)
  - Degree of harm
  - Surrounding circumstances
  - Nature and/or severity of behavior(s)
  - Past behaviors/patterns of behavior(s)
  - Relationship between parties involved
  - Context in which incident occurred

- Consequences**
- Shall be unique to the individual incident and will vary in method and severity according to the nature of the behavior and other factors. Consequences are designed to **protect the victim; correct the problem behavior; and prevent another occurrence.**
- Encourage Restitution
  - Educate about appropriate behavior
  - Temporary removal from classroom
  - Loss of privileges
  - Detentions
  - In school suspension
  - Out of school suspension
  - Legal action
  - Expulsion