



KANSAS COUNTY HEALTH RANKINGS: Understanding the Health of Atchison County

Caitlin McMurtry
Analyst
Kansas Health Institute



PRESENTATION ROADMAP

- Understanding community health
- Health Rankings
 - Purpose, studies, methodology, interpretation
- Atchison County's health profile
 - Assets and challenges
- Health initiatives around Kansas
 - Southeast Kansas and Wyandotte
- Planning for action in Atchison
 - Group discussion



UNDERSTANDING COMMUNITY HEALTH



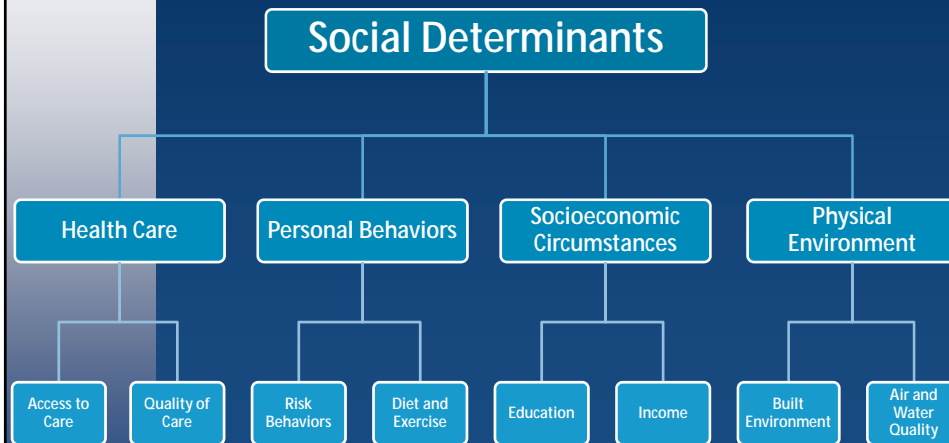
WHAT ARE SOCIAL DETERMINANTS?

From the World Health Organization (WHO):

"The social determinants of health are the circumstances in which people are born, grow up, live, work and age, and the systems put in place to deal with illness. These circumstances are in turn shaped by a wider set of forces: economics, social policies, and politics."



WHAT ARE SOCIAL DETERMINANTS?



WHAT IS A HEALTHY COMMUNITY?

From the Centers for Disease Control and Prevention (CDC):

"A community that is continuously creating and improving those physical and social environments and expanding those community resources that enable people to mutually support each other in performing all the functions of life and in developing to their maximum potential."

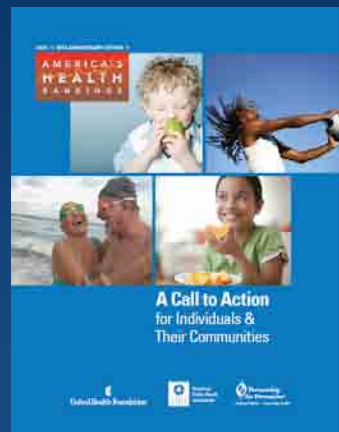


HEALTH RANKINGS



RANKINGS IN PUBLIC HEALTH

- Stimulate discussion about health differences and disparities
- Let us learn from each other how to achieve the best possible level of community health



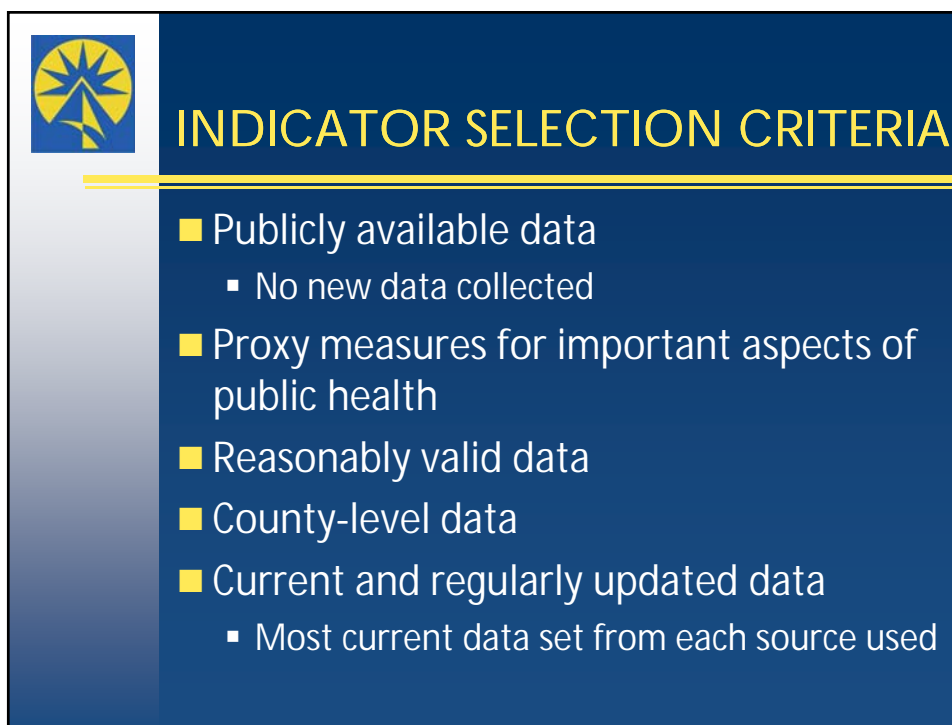
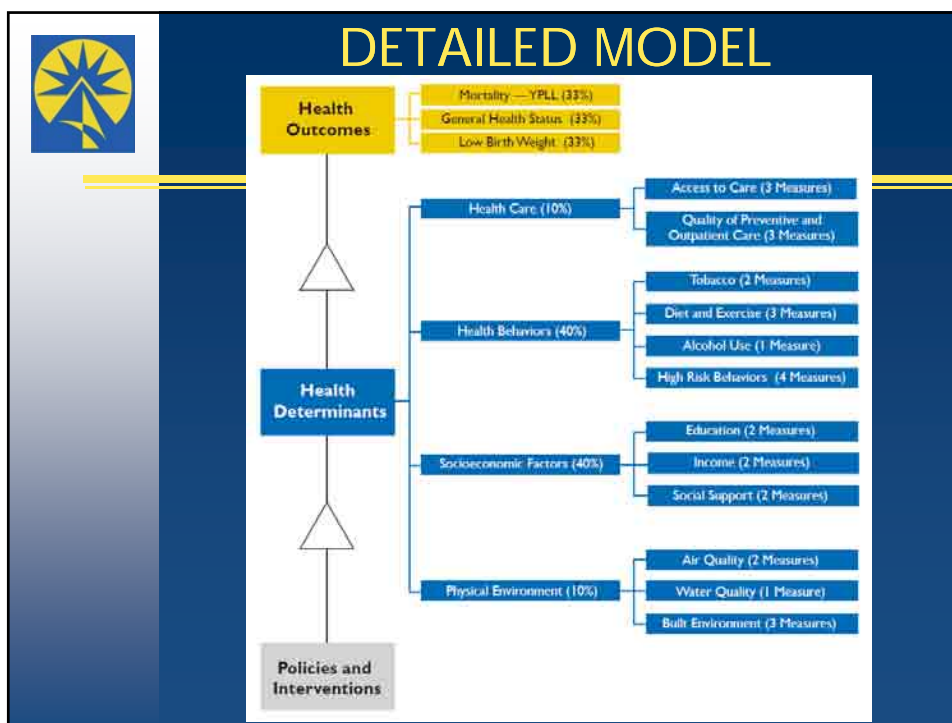


- Produced a county health ranking for each state, released in March 2010
 - Report available at <http://www.countyhealthrankings.org>
- Funded by the Robert Wood Johnson Foundation
- Same model as KHI project



Kansas County Health Rankings 2009

[illegible]





INDICATOR LIMITATIONS

- Small counts for some counties
 - Random fluctuations more pronounced
- Lack of exact indicators
 - Limited environmental, mental health data
 - Difficult to measure the effect of the built environment on lifestyle behaviors
 - Intangible indicators (e.g., social capital)
 - *"Not everything that counts can be counted..."*



LIMITATIONS OF RANKINGS

- Show progress towards an objective
 - Baseline data, comparison
- Show distance between the "best" and "worst" performers
 - When counties are closely clustered around a mean, ranking position is less important
- Show within-county variability
 - Health disparities



INTERPRETING RANKINGS

- Look at the big picture
 - Single measures are less meaningful than overall trends and indices
- Use rankings to identify health issues in your community
 - Rankings are a tool, not an endpoint



ATCHISON COUNTY'S HEALTH PROFILE

HEALTH DETERMINANTS: HEALTH BEHAVIORS

Health Determinants - Health Behaviors

indicator	selection	Kansas
Violent Crime (per 100,000)	266.5	222.9
Sexually Transmitted Disease (per 100,000)	340	363.6
Teen Birth (%)	13.4	10
Not Always Wearing Seatbelt (%)	47	30.4
Binge Drinking (%)	17.7	14.2
Low Fruit and Vegetable Consumption (%)	81.1	81.2
Overweight and Obesity (%)	68.6	60.9
Physical Inactivity (%)	26.8	24.2
Smoking During Pregnancy (%)	29.5	15.1
Cigarette Smoking (%)	22.8	20.4

★ Lowest in state

★ Bottom 10

★ Bottom 5

HEALTH DETERMINANTS: SOCIOECONOMIC FACTORS

Health Determinants - Socioeconomic Factors

indicator	selection	Kansas
High school Non-graduation rate (%)	13.5	10.9
No High School Diploma (%)	15.3	14
Unemployment Rate (%)	4.4	4.1
Children in Poverty (%)	19.3	15.2
Divorce Rate (Per 1,000)	3.7	3.2
Single Parent Households (%)	27	24.4

HEALTH DETERMINANTS: PHYSICAL ENVIRONMENT

Health Determinants - Physical Environment		
indicator	selection	Kansas
Respiratory Hazard Index	0.8	1.5
Second Hand Smoking (%)	34	26.6
Nitrate and Coliform Levels in Water (%)	0.6	3.1
Housing with Increased Lead Risk (%)	50	28.3
Lead Poisoned Children (%)	1.4	1.1
Commuting to Work by Driving Alone (%)	78.7	81.5

HEALTH OUTCOMES

Health Outcomes		
indicator	selection	Kansas
Low Birth Weight (%)	7.9	7.2
General Health Status: Fair or Poor (%)	17.5	13.6
Years of Potential Life Lost Prior to Age 75 (Years, per 1,000)	80.5	66.4

What are some conclusions we can draw about the lives of Atchison residents, given this data?



HEALTH INITIATIVES AROUND KANSAS



SOUTHEAST KANSAS

- Partnering with Thrive Allen County to create a regional coalition of community leaders.
 - Nine participating counties identify common priorities, plan for specific goals, implement evidence-based approaches.
 - AL, BB, CK, CR, LB, MG, NO, WL and WO.
- The coalition's work so far includes two summits, a survey of community priorities, and the creation of a steering committee.



WYANDOTTE

- Partnering with the Unified Government of Wyandotte County – mayor, 3 county commissioners and health dept. director.
- The Task Force's work so far includes:
 - Two stakeholder meetings
 - 40 leaders from health care, education, social service, business, faith-based and other organizations.
 - An open community meeting
 - 62 residents, legislators and interest groups.
 - The creation of a steering committee
 - 14 participants from the stakeholder meetings.



ASSETS & CHALLENGES

- **Southeast Kansas:** Grassroots, bottom-up approach, driven by community input.
 - Assets: Sustainable, organic, directly responsive to community needs and concerns.
 - Challenges: Intensive process to build support.
- **Wyandotte:** Governmental, top-down approach, informed by community input.
 - Assets: Faster process, swift impact, more immediate funding, iconic leadership.
 - Challenges: Less transparency, more variability.



PLANNING FOR ACTION IN ATCHISON



STRATEGIES FOR PROGRESS

- Prioritize health concerns
 - How serious are the consequences of this indicator?
 - Can we change this indicator?
 - What momentum already exists behind this indicator?
- Develop integrated approaches that address multiple factors
- Mount a collaborative effort to support a community-based partnership for the long haul



QUESTIONS FOR DISCUSSION

- What are the areas of greatest concern?
- What is your vision for Atchison's future?
- How would you prioritize a community response to the data?
- What is this committee's role in a community response?



RESOURCES

- Kansas Health Institute (2009). *Kansas County Health Rankings*. Report can be found at <http://www.khi.org>
- Robert Wood Johnson Foundation and University of Wisconsin Population Health Institute (2010). *County Health Rankings: Mobilizing Action Toward Community Health*. Kansas 2010. Report can be found at <http://www.countyhealthrankings.org>
- Johnson K, Grossman W, Cassidy A, eds. *Collaborating to Improve Community Health. Workbook and Guide to Best Practices in Creating Healthier Communities and Populations*. The Healthcare Forum, Jossey-Bass, 1996.



KANSAS HEALTH INSTITUTE



Information for policymakers. Health for Kansans.