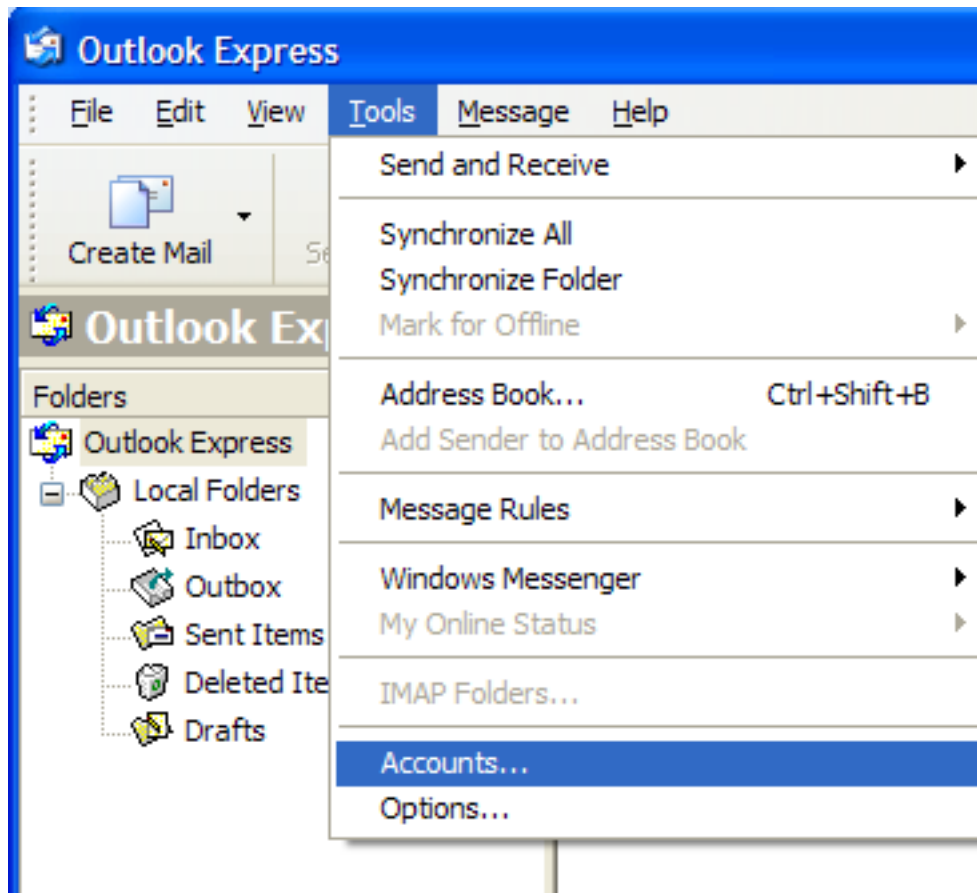


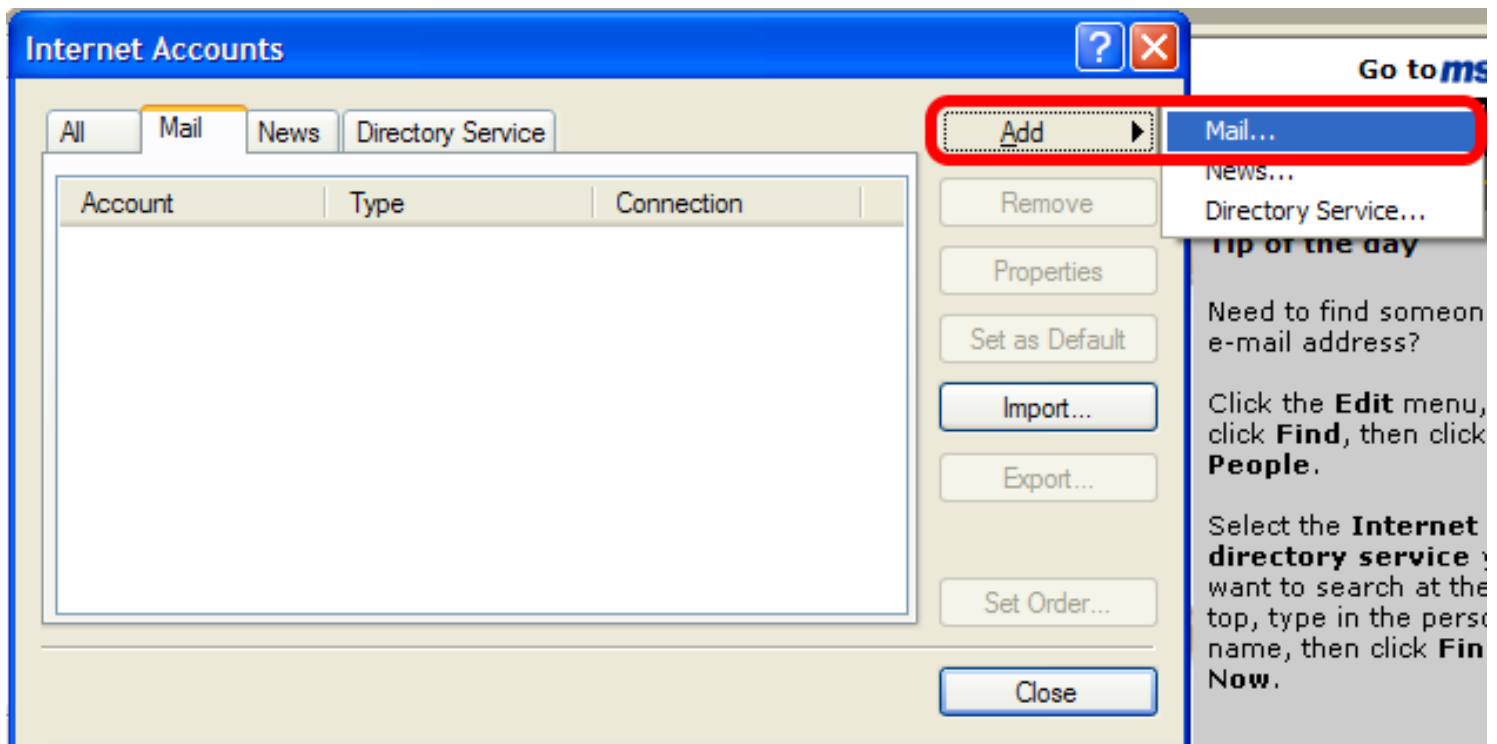
Outlook Express

This lesson explains how to configure your Hover email in Outlook Express using POP3.

Configure Outlook Express

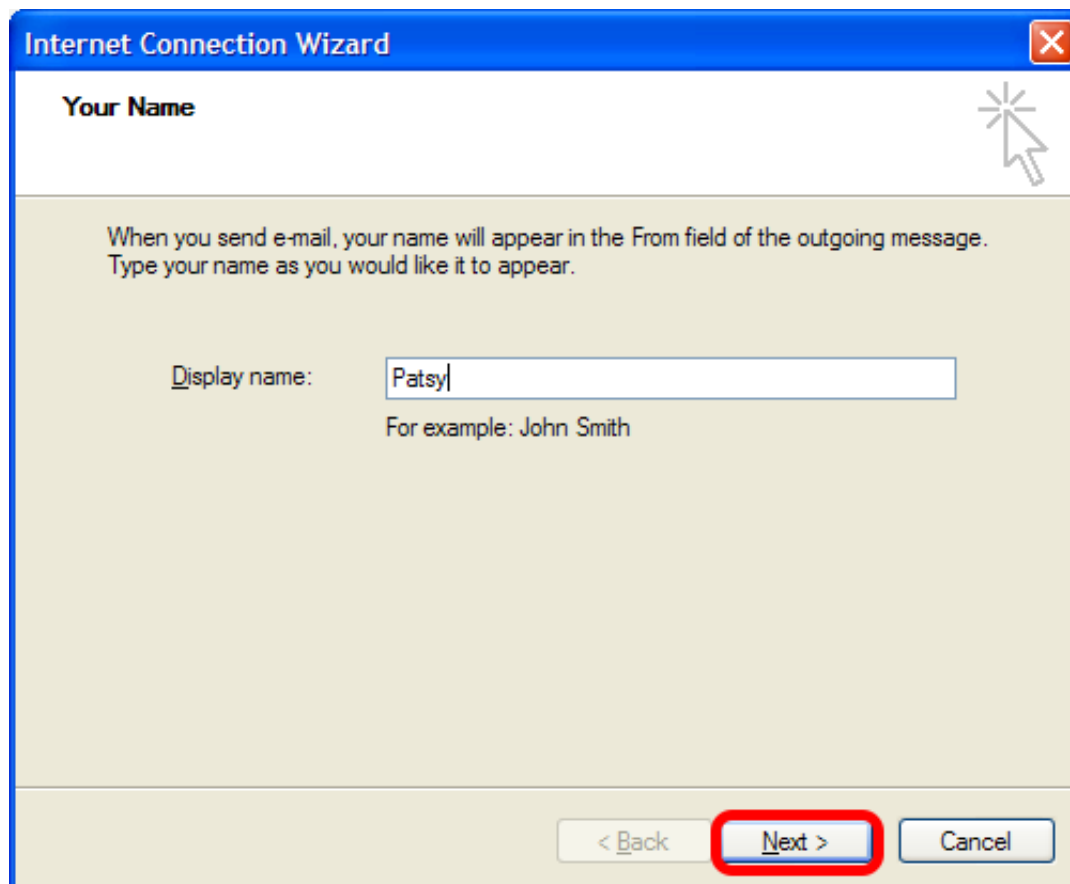


Click on Tools and select Accounts.

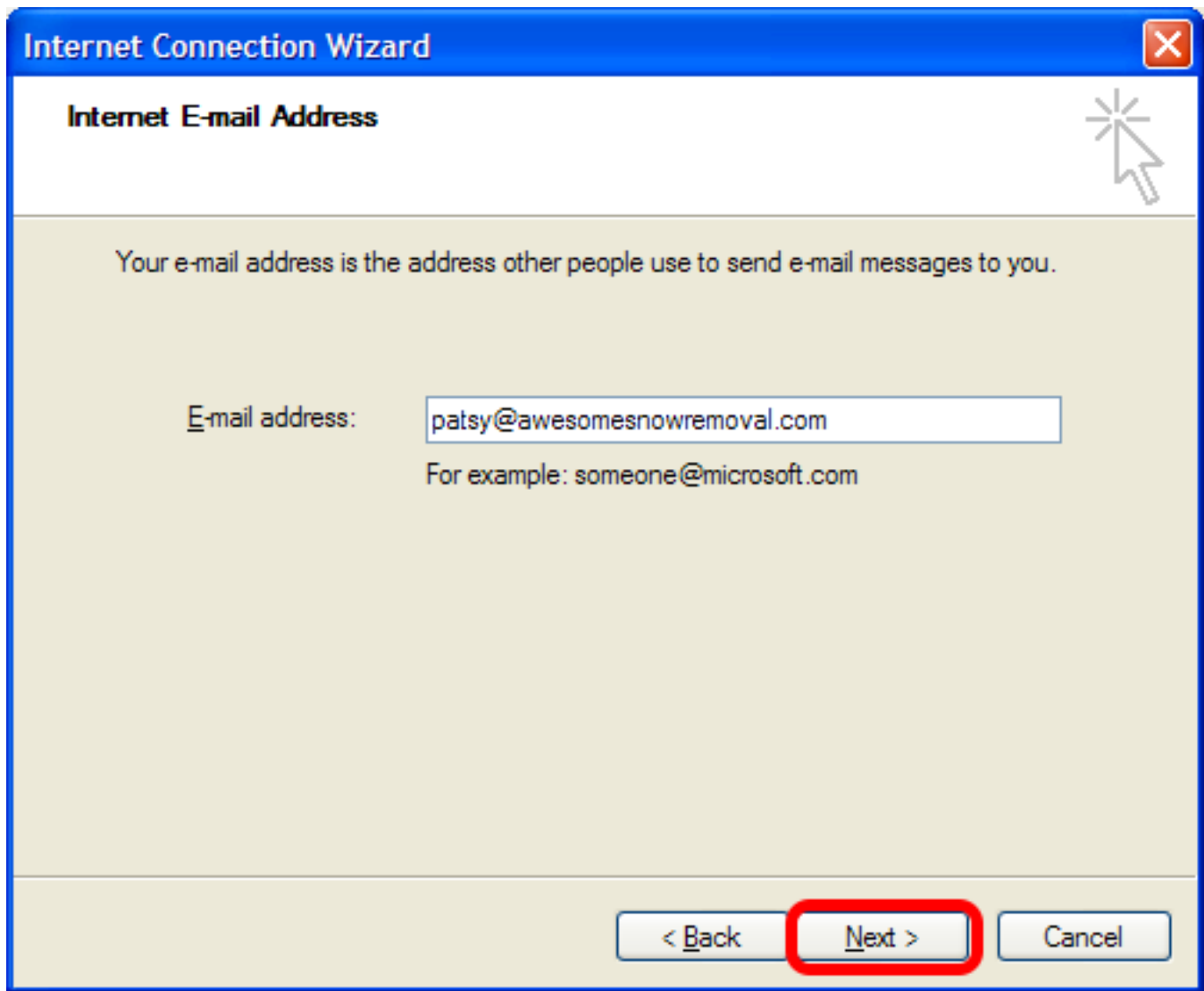


Click on Add and select Mail.

Internet Connection Wizard



Enter your name and click Next.



Enter your email address and click Next.

Internet Connection Wizard

E-mail Server Names

My incoming mail server is a **POP3** server.

Incoming mail (POP3, IMAP or HTTP) server:
mail.hover.com

An SMTP server is the server that is used for your outgoing e-mail.
Outgoing mail (SMTP) server:
mail.hover.com

< Back **Next >** Cancel

Select POP3 as the server type and enter mail.hover.com for incoming mail and outgoing mail then click Next.

Internet Connection Wizard [Close]

Internet Mail Logon [Help]

Type the account name and password your Internet service provider has given you.

Account name:

Password:

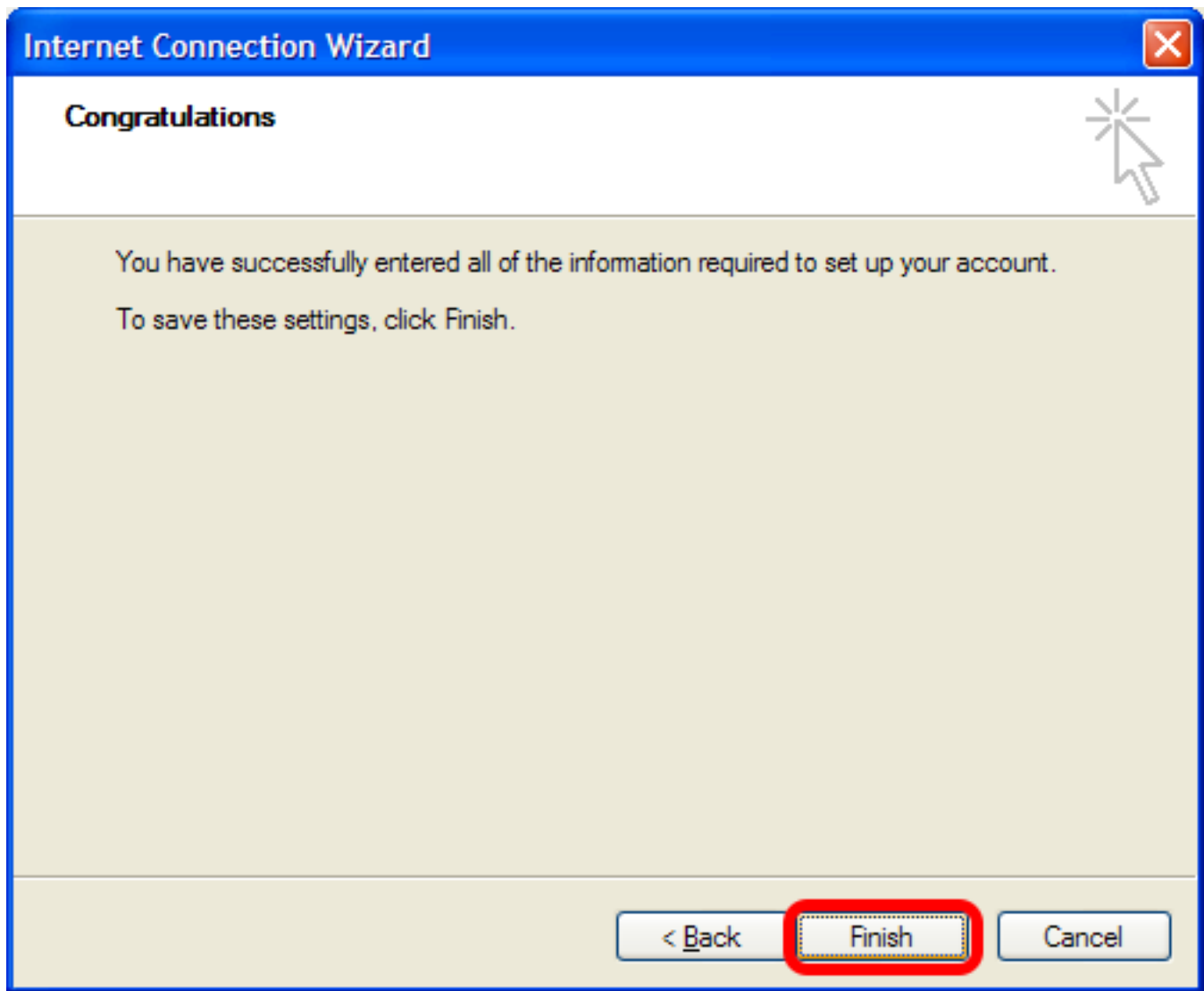
Remember password

If your Internet service provider requires you to use Secure Password Authentication (SPA) to access your mail account, select the 'Log On Using Secure Password Authentication (SPA)' check box.

Log on using Secure Password Authentication (SPA)

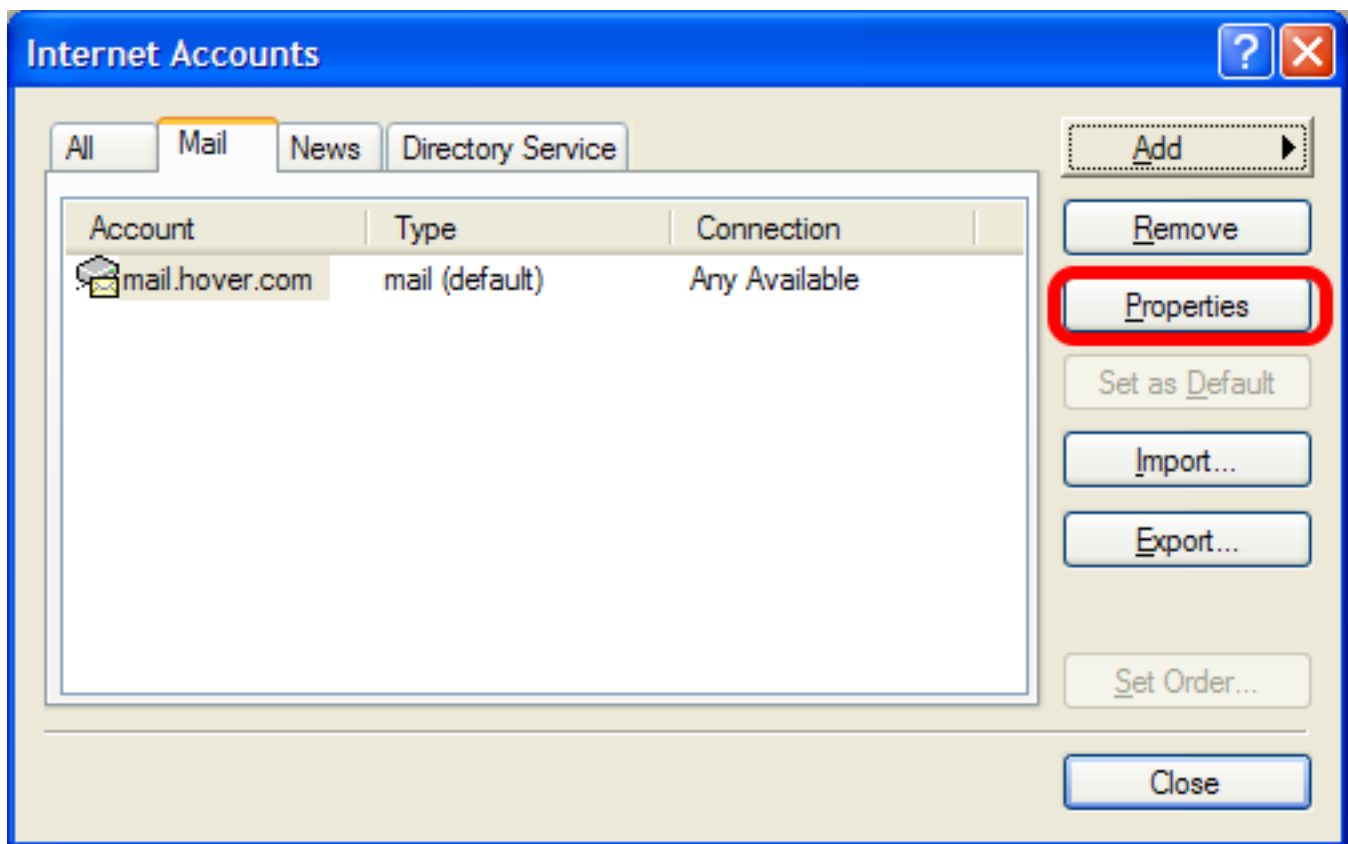
< Back **Next >** Cancel

Enter your full email address as the account name and enter your password then click Next.

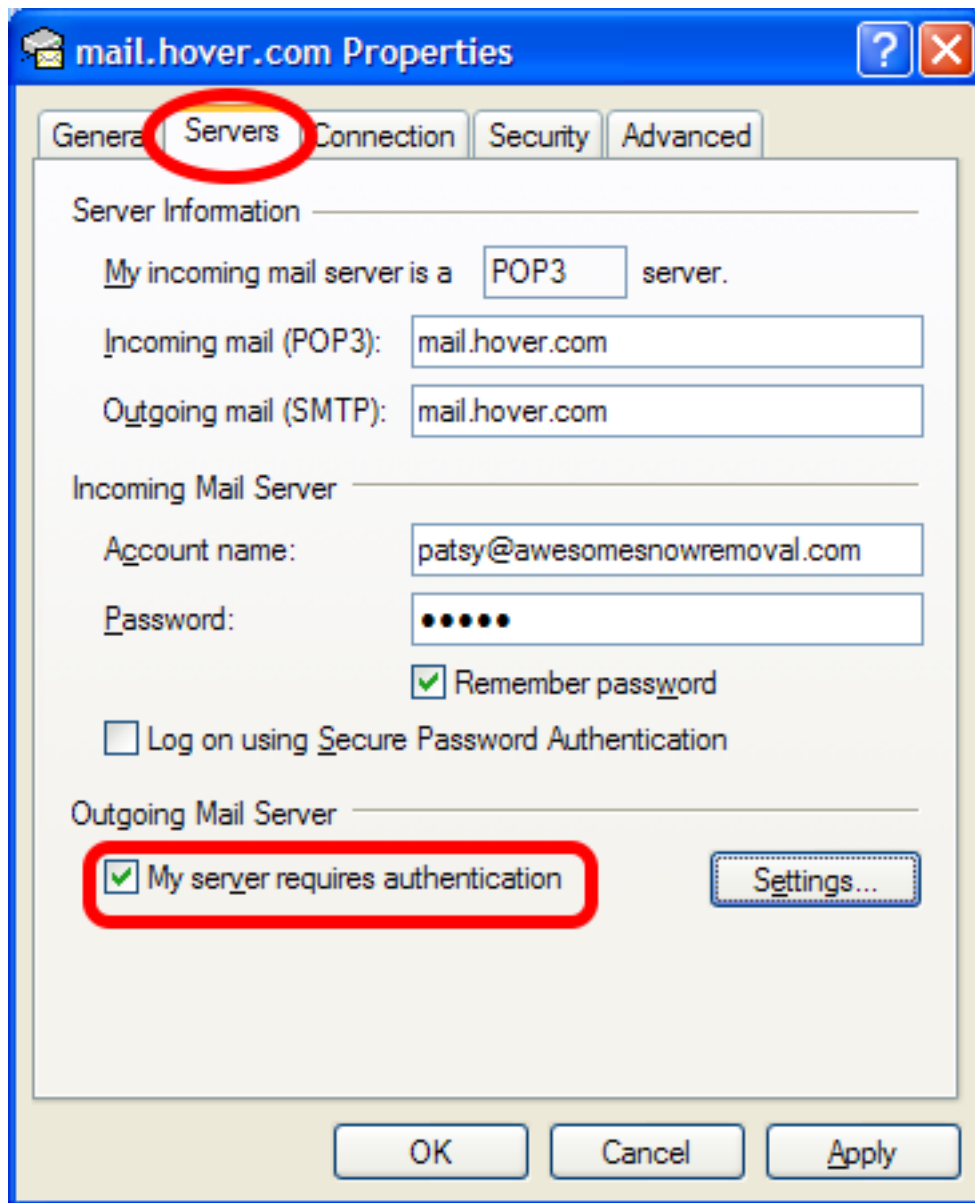


Click Finish.

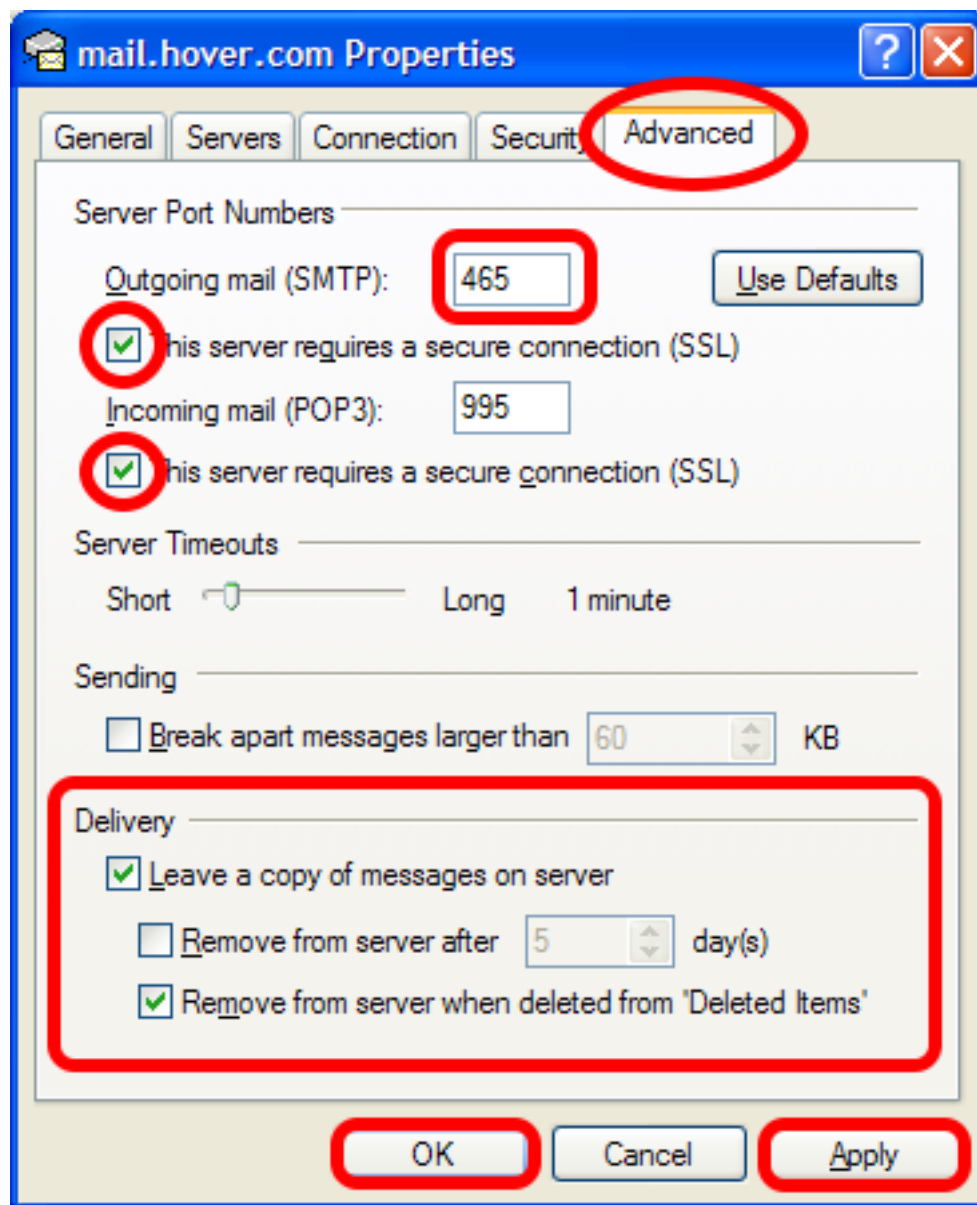
Edit Account Properties



Highlight your Hover account and click on Properties.



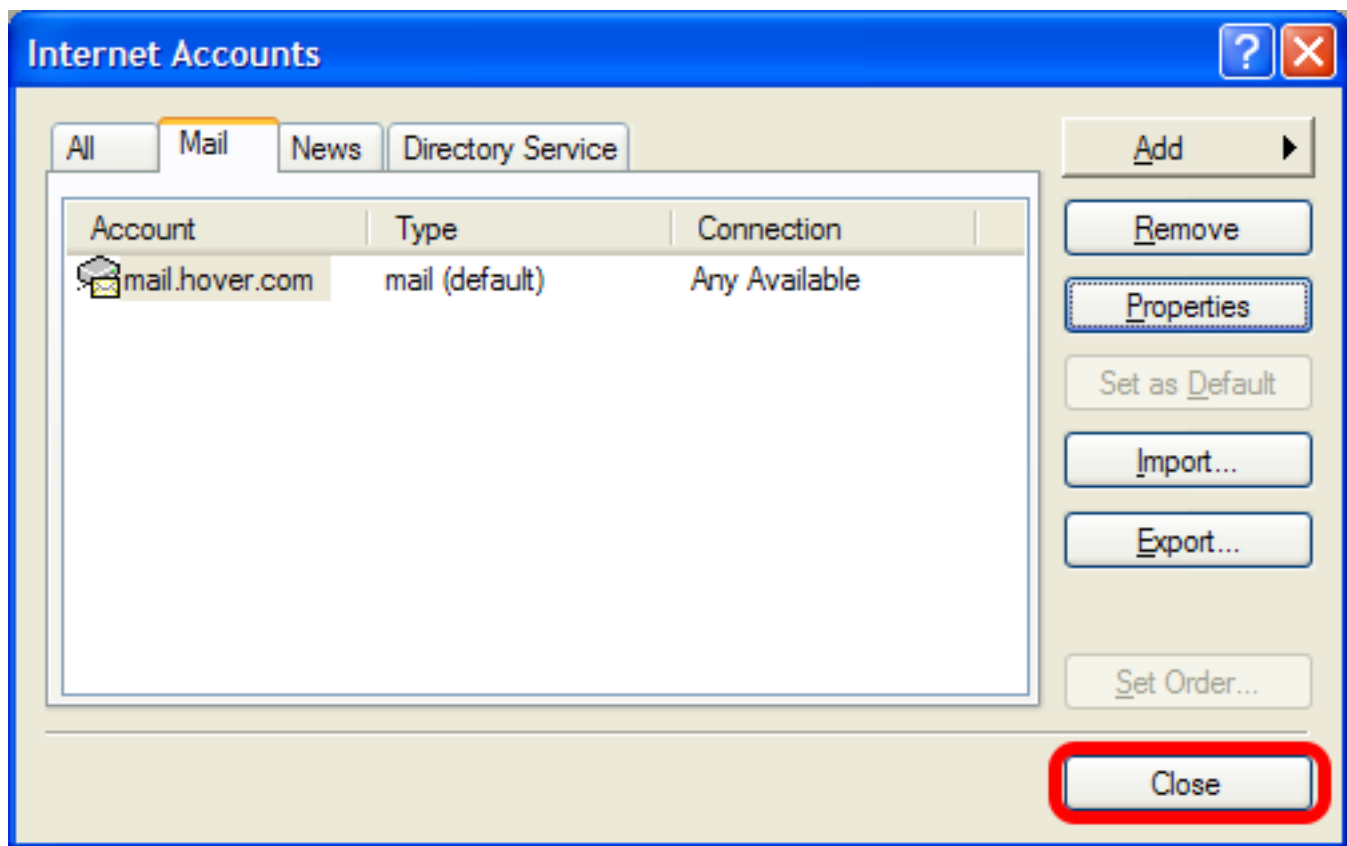
Click on the Servers tab and put a check next to "My server requires authentication."



Click on the Advanced tab.

Put a check next to "This server requires a secure connection (SSL)" under outgoing and incoming mail then change the Outgoing mail (SMTP) port from 25 to 465. Click Apply then click OK to save the settings.

Under Delivery you can choose to leave a copy of messages on the server. This is optional. Leaving a copy of messages on the server is useful if you want to download messages on more than one computer or access copies of old messages in webmail when you are away from your computer.



Close Internet Accounts. Your account is now configured!

Need More Help?

If this still isn't working, doesn't make sense, or you just want to talk to someone, here is how you can reach us:

Telephone: 1-866-731-6556 (North America Toll Free);
416-538-5498 (local)

Email: help@hover.com

Twitter: @HoverCS

Join us on Facebook: <http://about.hover.com/facebook>

Article Shortcut: <http://about.hover.com/outlookexpresspop>
