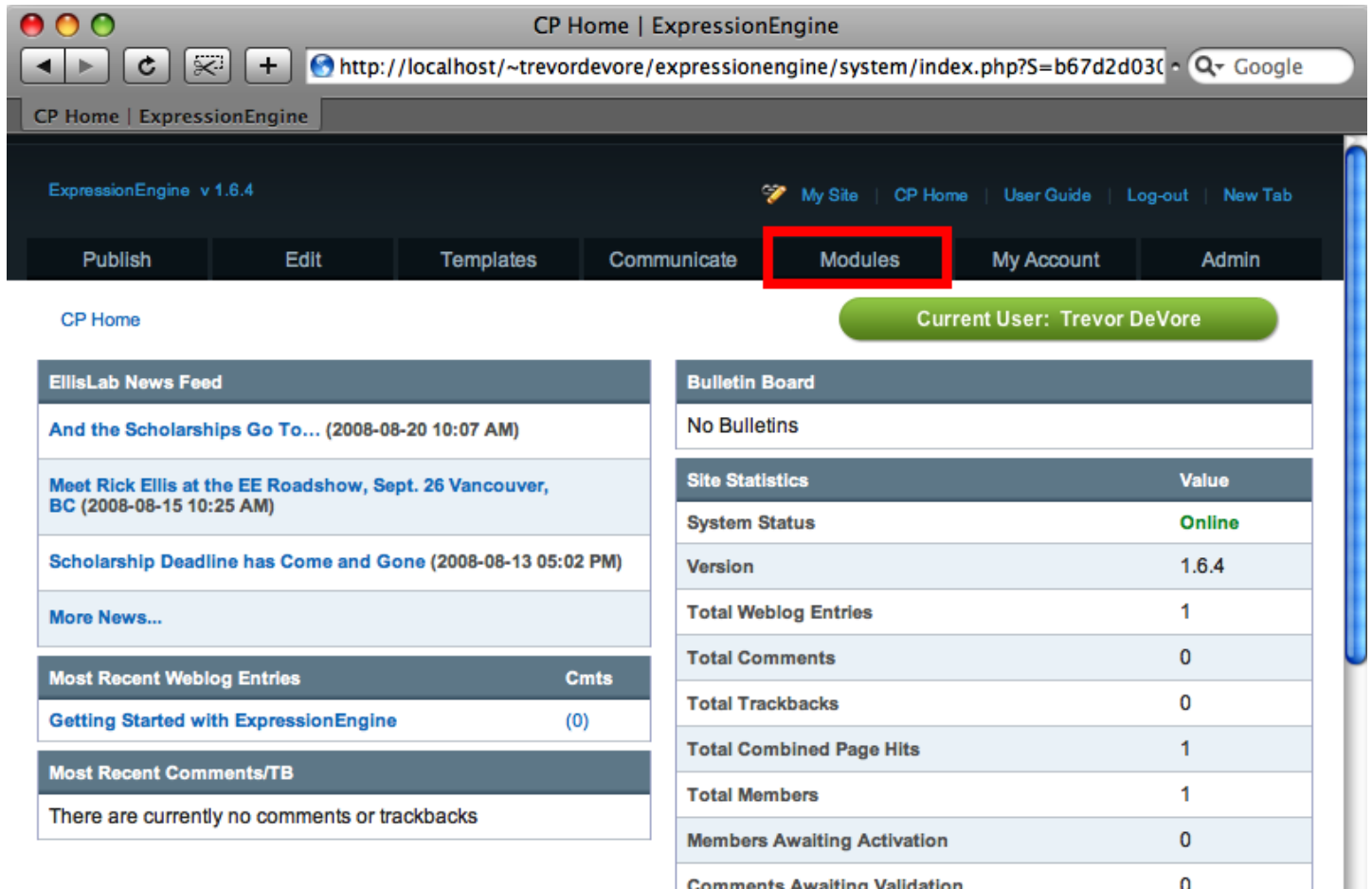


Posting To ExpressionEngine

This lesson will demonstrate how to configure ExpressionEngine and ScreenSteps in order to post lessons from ScreenSteps to ExpressionEngine.

Go to ExpressionEngine Administration Pages



CP Home | ExpressionEngine

ExpressionEngine v 1.6.4

My Site | CP Home | User Guide | Log-out | New Tab

Publish | Edit | Templates | Communicate | **Modules** | My Account | Admin

CP Home

Current User: Trevor DeVore

EllisLab News Feed	
And the Scholarships Go To... (2008-08-20 10:07 AM)	
Meet Rick Ellis at the EE Roadshow, Sept. 26 Vancouver, BC (2008-08-15 10:25 AM)	
Scholarship Deadline has Come and Gone (2008-08-13 05:02 PM)	
More News...	

Most Recent Weblog Entries	Cmts
Getting Started with ExpressionEngine	(0)

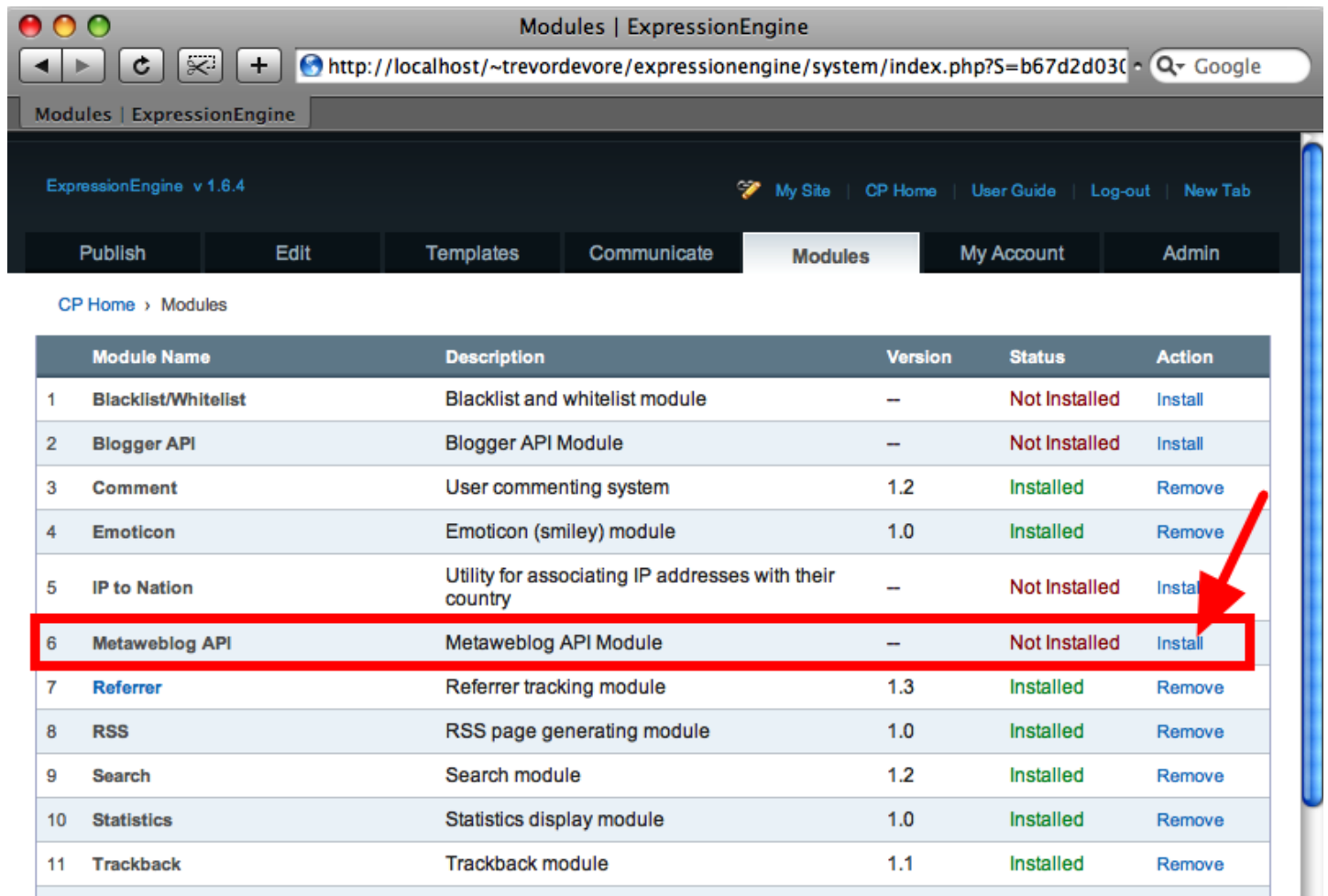
Most Recent Comments/TB	
There are currently no comments or trackbacks	

Bulletin Board	
No Bulletins	

Site Statistics		Value
System Status		Online
Version		1.6.4
Total Weblog Entries		1
Total Comments		0
Total Trackbacks		0
Total Combined Page Hits		1
Total Members		1
Members Awaiting Activation		0
Comments Awaiting Validation		0

Click on **Modules**.

Install Metaweblog API Module

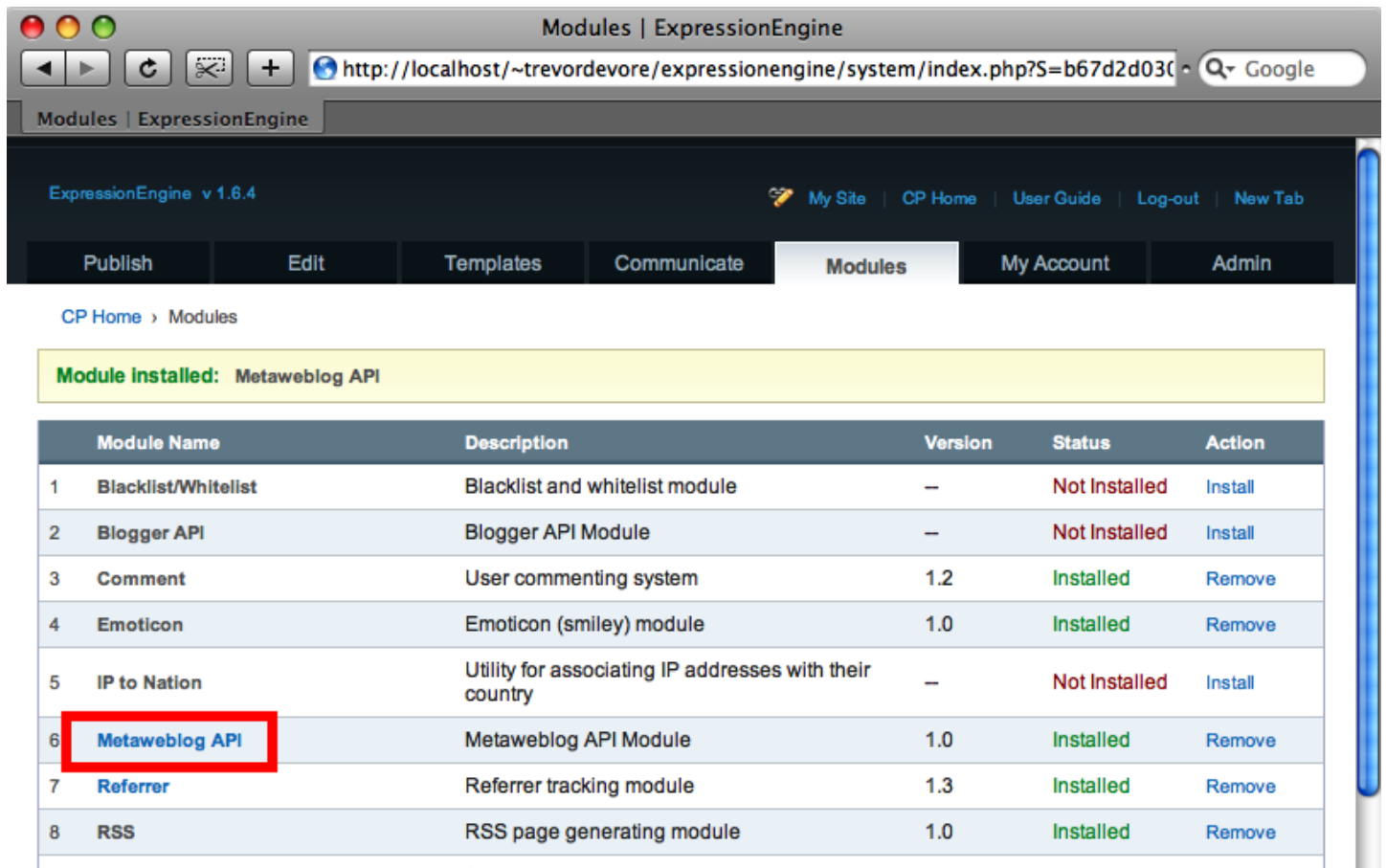


The screenshot shows the ExpressionEngine Modules page. The browser address bar displays the URL: <http://localhost/~trevordevore/expressionengine/system/index.php?S=b67d2d030>. The page title is "Modules | ExpressionEngine". The version is "ExpressionEngine v 1.6.4". The navigation menu includes "Publish", "Edit", "Templates", "Communicate", "Modules", "My Account", and "Admin". The "Modules" tab is selected. The breadcrumb trail is "CP Home > Modules". The table below lists the installed and available modules.

Module Name	Description	Version	Status	Action
1 Blacklist/Whitelist	Blacklist and whitelist module	—	Not Installed	Install
2 Blogger API	Blogger API Module	—	Not Installed	Install
3 Comment	User commenting system	1.2	Installed	Remove
4 Emoticon	Emoticon (smiley) module	1.0	Installed	Remove
5 IP to Nation	Utility for associating IP addresses with their country	—	Not Installed	Install
6 Metaweblog API	Metaweblog API Module	—	Not Installed	Install
7 Referrer	Referrer tracking module	1.3	Installed	Remove
8 RSS	RSS page generating module	1.0	Installed	Remove
9 Search	Search module	1.2	Installed	Remove
10 Statistics	Statistics display module	1.0	Installed	Remove
11 Trackback	Trackback module	1.1	Installed	Remove

If you have not yet installed the **Metaweblog API Module** then click on **Install**.

Retrieve API URL



ExpressionEngine v 1.6.4

My Site | CP Home | User Guide | Log-out | New Tab

Publish | Edit | Templates | Communicate | **Modules** | My Account | Admin

CP Home > Modules

Module installed: Metaweblog API

	Module Name	Description	Version	Status	Action
1	Blacklist/Whitelist	Blacklist and whitelist module	—	Not Installed	Install
2	Blogger API	Blogger API Module	—	Not Installed	Install
3	Comment	User commenting system	1.2	Installed	Remove
4	Emoticon	Emoticon (smiley) module	1.0	Installed	Remove
5	IP to Nation	Utility for associating IP addresses with their country	—	Not Installed	Install
6	Metaweblog API	Metaweblog API Module	1.0	Installed	Remove
7	Referrer	Referrer tracking module	1.3	Installed	Remove
8	RSS	RSS page generating module	1.0	Installed	Remove

Click on **Metaweblog API** to navigate to the administration screen.

Copy URL

Metaweblog API | ExpressionEngine

http://localhost/~trevordevore/expressionengine/system/index.php?S=b67d2d030

ExpressionEngine v 1.6.4

My Site | CP Home | User Guide | Log-out | New Tab

Publish Edit Templates Communicate Modules My Account Admin

CP Home > Modules > Metaweblog API

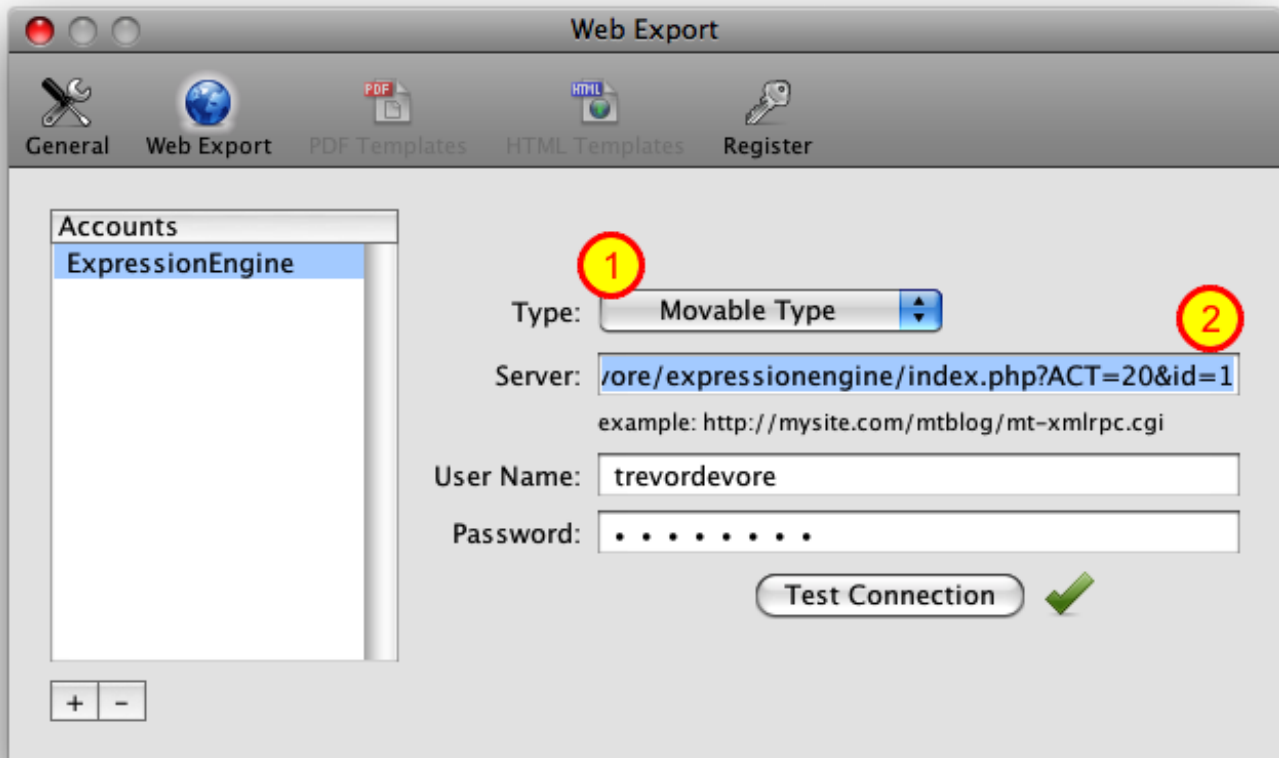
Create New Configuration

Name/Edit	URL	Delete
Default	http://localhost/~trevordevore/expressionengine/index.php?ACT=20&id=1	—

Delete

Copy the URL to the clipboard. You will need this when configuring ScreenSteps.

Configure ScreenSteps



Create a new **Web Export** account (in Preferences). Assign **Movable Type** (1) as the Type and paste the URL into the Server field (2).

Enter a valid username and password for your ExpressionEngine installation and click Test Connection. The green checkmark should appear.

Now when you export a lesson to Blog/Web your ExpressionEngine account will be an option. See [this lesson](#) for more information.