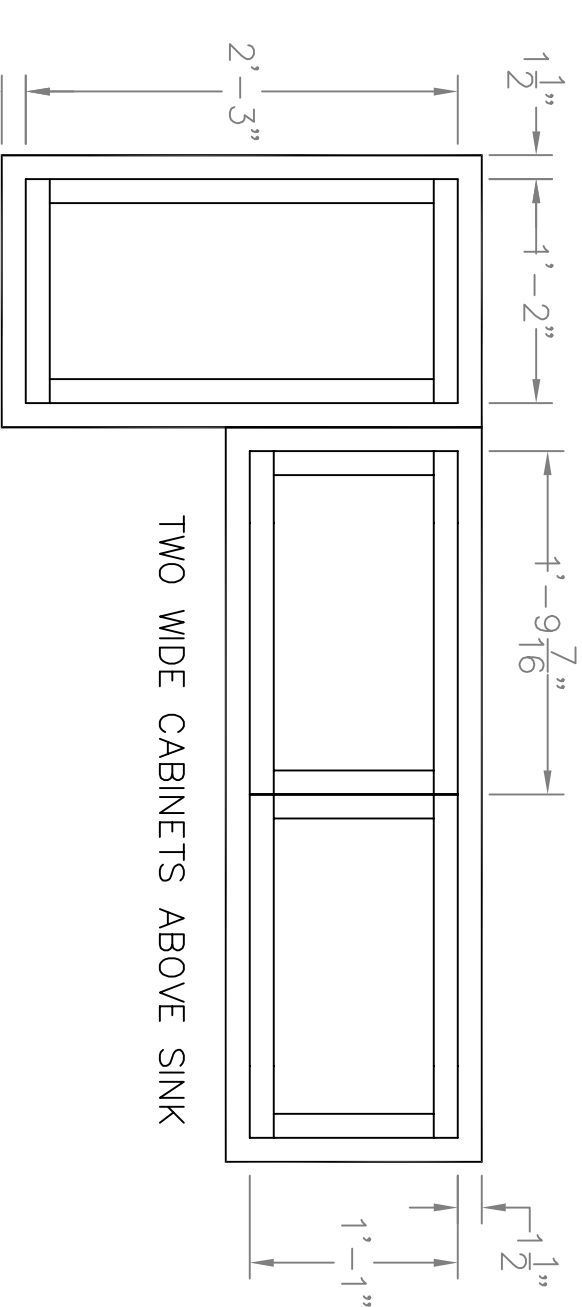
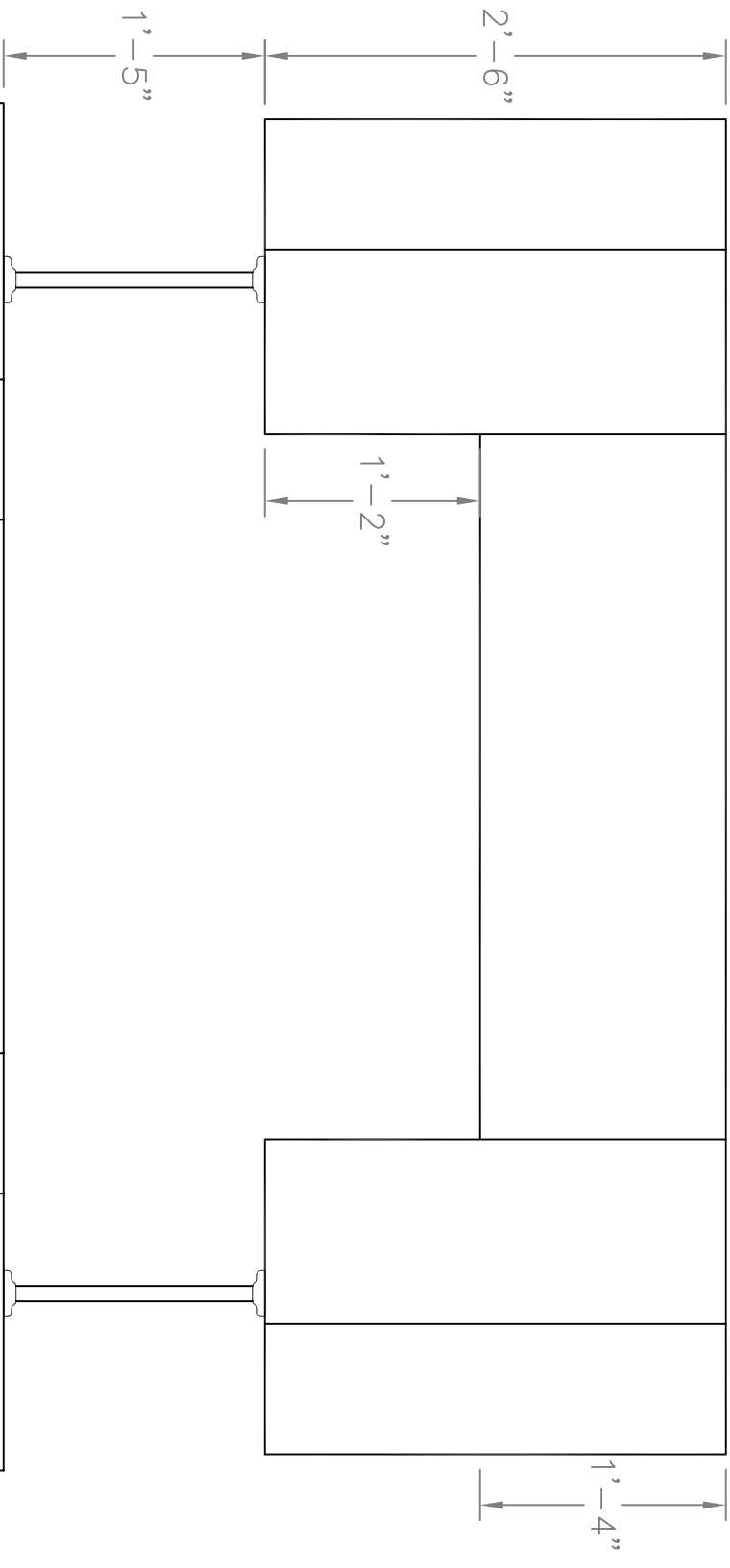


SKIN THE VISIBLE FACINGS OF ALL CABINETS WITH LUAN. LUAN AND WOOD TRIM WILL ALL BE LIGHTLY STAINED AND CLEAR-COATED.



TWO SIDE CABINETS (REPEAT THIS ONE ON THE OTHER SIDE)

TWO WIDE CABINETS ABOVE SINK



Papermill Theatre  
**TRUE WEST**  
 DIRECTED BY PATRICK STINSON  
 SCENIC DESIGN BY MATT KIZER  
 TECHNICAL DIRECTOR ERIK ANDERSON

**CABINETS**  
 SCALE: 1" = 1'-0"