

## Scott Paper Hires 15 Under NAB Plan

CHESTER — Fifteen persons, hired under the national Advanced Businessmen's (NAB) program to provide jobs for the disabled, will begin training Monday at the Scott Paper Company's plant here.

Some 30 persons are scheduled to work at Scott in the NAB program.

To prepare its employees to work with the group, Scott designed a series of "sensitivity training" courses for some 300 supervisors, union leaders and security force workers.

The employees were exposed to 16 hours each of various types of tests about the life of a disadvantaged person.

George F. Blessing, Chester division vice president for Scott, said the training, given on company time, was geared to "prepare our plant management, union leaders and guard force to understand the special problems these disadvantaged people have, and to invest the time and training needed to make sure Scott's program will succeed."

Although some normal work requirements were waived to hire the 30, Blessing emphasized the company did not "create jobs for these people."

"The jobs are ones that we have always had here in Chester."

## Controller Appointed

UPPER DARBY — John H. Christ of Neptune, N.J., has been appointed controller at Delaware County Memorial Hospital, Drexel Hill.

He succeeds Roland Halloway who has resigned to take a post at St. Agnes Hospital.

## Bar Mitzvah

NETHER PROVIDENCE — Martin Allan Rubenstein, son of Mr. and Mrs. Charles Rubenstein, 107 Cameron Drive, Springfield, has been bar mitzvah.

Cantor Jonas Garfinkel and Rabbi Louis Kaplan of Chesham officiated.

## Congressmen Voting Is Recorded

Delaware County's two congressmen have voted with the minority on two amendments which would have kept the federal government from withholding funds from school districts which have failed to desegregate.

By narrow margins of about 18 votes, the House, re-elected for the 91st Congress, voted to approve a school desegregation amendment. In striking these provisions, the House voted to accept a 5-6 vote amendment that merely affirms the present two restrictive amendments.

U.S. Rep. G. Robert Warriner (R-9th District of Birmingham) and Lawrence G. Williams (R-7th District) voted with the majority in favor of the restrictive amendments.

The amendments would have barred the use of the building.

## Camera Club

UPPER DARBY — The Delaware County Camera Club will meet at 8:15 p.m. Monday in Fellowship Hall, Stonehurst Hills Methodist Church, Millbank Road and Midway Ave.

## Dances Resume

UPLAND — The Upland Teenage Club has resumed its weekly dances each Thursday from 7:30 to 10:30 p.m. at the municipal building.

### IMPORTANT NOTICE!

printing YOUR business with IMPRINTED ADVERTISING

- OVER 10,000 NOVELTY ITEMS
- Address Books
- Ball Point
- Bumper Stickers
- Key Taps
- Ash Trays
- Ballpens
- Golf Balls
- Pen Holders

ORDER EARLY!!  
CALL TODAY!  
W. H. HANSEN SPECIALTIES  
HU 4-2234



# THURSDAY PRE-COLUMBUS DAY VALUES

A GREAT DAY TO DISCOVER GREAT BUYS!

## Crozer Lecturers Named

UPLAND — Two counties have been appointed as guest lecturers at the Mary Luther King Jr. School of Social Change, a department of Crozer Theological Seminary here, according to Dr. E. Melvin Henderson, academic dean.

Don Rouse, executive director of the Robert Wade Neighborhood House, Chester, will conduct a course in community organization and Robert Woodson, director of the Media Fellowship House, will lead a seminar on the "Black Power movement" in the King School.

Rouse received a BA and MSW degrees from the University of Michigan. Prior to accepting the directorship of the Robert Wade House, he served as a community organizer for the North Toledo Community House, Toledo, Ohio.

He is a member of the National Association of Social Workers, the Central Delaware County Fair Housing Council and the International Society for Community Development.

Woodson received a BS degree from Cheyney State College and a masters in social work from the University of Pennsylvania. He has worked as a youth counselor at the Youth Development Center, Philadelphia and as a psychiatric social worker for the Mental Health Center, Chester County.

He is vice president of the West Chester Branch of the National Association for the Advancement of Colored People and a member of the executive committee of the West Chester Lumina Relations Council.

The school here offers a two-year course of study leading to a master of art degree in social change, Dean Henderson stated.

## Clark Announces Campaign Aides

Martin Techner of Havertown and William Bassiere of Lansdowne have been named co-chairmen of the Delaware County Committee to reelect U.S. Sen. Joseph S. Clark (D-Pa.).

Arrangement of Techner and Bassiere was announced by Sen. Clark.



**FINE QUALITY BINOCULARS with CASE**  
**12.88**  
By Boy  
7x35 center focus prism, focus adjust.



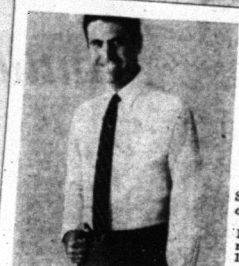
**MEN'S NO IRON FINE-FITTING DRESS SLACKS**  
**4.99**  
Great Buy  
Orlon® acrylic-rayon belt loop model 30-12.



**MEN'S KNIT TURTLENECK COTTON SHIRTS**  
**2 for \$5**  
Washable cotton, S-M-L-XL. Singly at 2.50 each.



**YOUR CHOICE! MEN'S BELTS or SILK TIES**  
**99¢ ea.**  
Leather belts in 30-12. Pattern silk ties.



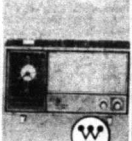
**MEN'S LONG SLEEVED SPORT & DRESS SHIRTS**  
**3 for \$5**  
Seasonal Value  
SPORT SHIRTS in cotton, regular collar. Sizes S-M-L.  
DRESS SHIRTS in washable Italian nylon tricot. 14½-17. Sells singly at 1.79 ea.



**FAMOUS ARGUS INSTANT LOAD CAMERA KITS**  
**12.88**  
Great Value  
With film, flashcube, batteries and strap.



**"POLAROID" Famous "SWINGER" Cameras**  
**17.88**  
S. K. reg. low price 21.88  
Big 3½ x 4½ photos in 10 seconds! Cartridge loading, built-in flash.



**"WESTINGHOUSE" SOLID-STATE CLOCK RADIOS**  
**19.88**  
regularly 28.88  
Solid-state with 4" speaker and Snooze Alarm!



**14-TRANSISTOR SOLID-STATE AM FM RADIOS**  
**10.99**  
Great Buy!  
Solid-state with AM/FM tuner, AFC on FM. 24 per store!



**MEN'S ALL-WEATHER ZIP-OUT RAINCOATS**  
**\$16**  
Great S. K. Buy  
Single breasted fit front balmain style in wash and wear Dacron® polyester and cotton blend. Great in Olive, Tan and Black. Sizes 36-44, R-S-L.



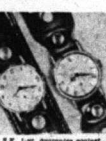
**OUR ENTIRE STOCK! MOVIE SOUNDTRACKS & SHOWTUNES**  
AT LOW PRICES  
L.P. & H.P. 2.49 reg. 2.79  
C. & S. 2.99 reg. 3.19  
P. & S. 3.49 reg. 3.79



**"AMERICAN HERO" ACTION TOYS Below Wholesale**  
**99¢**  
regularly 1.99  
By "Lakeside", Pony Soldier, Tex Star, Brave Warrior.



**BELOW WHOLESALE! "REMCO" TIPPY TUMBLERS DOLLS**  
**7.99**  
S. K. reg. low price 11.99  
She tumbles by remote control! Batteries optional. Hurry!



**BIG, BOLD & BEAUTIFUL 17-JEWEL 60-60 WATCHES**  
**7.99**  
Incredibly Priced!  
One and two-piece snap-on bands, antique hands. Arable figures, more!



**45-PC. SERVICE FOR 8 MELAMINE DINNERWARE**  
**9.88**  
Big Buy!  
8 patterns. 8 ea.: dinners, desserts, cups, saucers, bread/butters. Bowl, platter, covered sugar and creamer.



**FLORAL ZIPPERED SOFTSIDE LUGGAGE**  
**1.99**  
17" Overlifter, 10" & 21" Weekender — 2.99  
23", 25" Pullman — 1.99.



**COMBINATION CAN OPENER & SHARPENER**  
**5.99**  
regularly 7.99  
Opens standard cans, sharpens knives. Big buy!



**"WESTINGHOUSE" TEFLON STEAM & DRY IRONS**  
**8.99**  
S. K. reg. low price 10.88  
DuPont Teflon® coated, 17 steam vents, 180°-225° Just 28 per store!



**"OSTER" 10-SPEED OSTERIZER FOOD BLENDERS**  
**39.88**  
Special Purchase!  
Pushbutton Osterizer® stirrer, whisk, more. Recipe books.



**EUROPEAN HAND-CUT LEAD CRYSTALWARE**  
**2.99**  
Fabulous Buy!  
Fine selection includes covered candy boxes, 8" vases, oval fruit bowls, compotes and many other precious pieces!

## NEED OIL IN A HURRY! Instant heat

The minute we receive your call for heating service or Gulf Solar Heat® heating oil, it is relayed to one of our trucks.

**STORY-WINN FUEL CO.**  
Phone  
CHESTER—33-0000  
COUNTY—LE 4-9800

**DON'T MISS S.K.'S FABULOUS HOMEMAKERS JUBILEE**  
NOW THRU SATURDAY, OCT. 12TH

**LIMITED QUANTITIES! HURRY IN FOR WIDEST SELECTIONS**

**N.E. PHILADELPHIA Roosevelt Mall**  
Open every night to 9:30 P.M., Friday & Saturday to 10 P.M.  
Reassure Mid-Atlantic Counties, Pa.

**MARPLE-SPRINGFIELD**  
Both Stores Open Monday thru Saturday, 9:30 a.m. to 9:30 p.m.  
Just say "CHARGE IT!" with your S. Klein Charge Account

Open every night to 9:30 P.M., Friday to 10 P.M., Saturday (10:30 P.M.) & Stratford Ave., Delaware County, West of Laurel Road.