

I. Install CH340 Driver for Mac OS

Support System: OS(Operating System)X 10.9 and above

Tested and this document based in: OS(Operating System)X 10.13.3

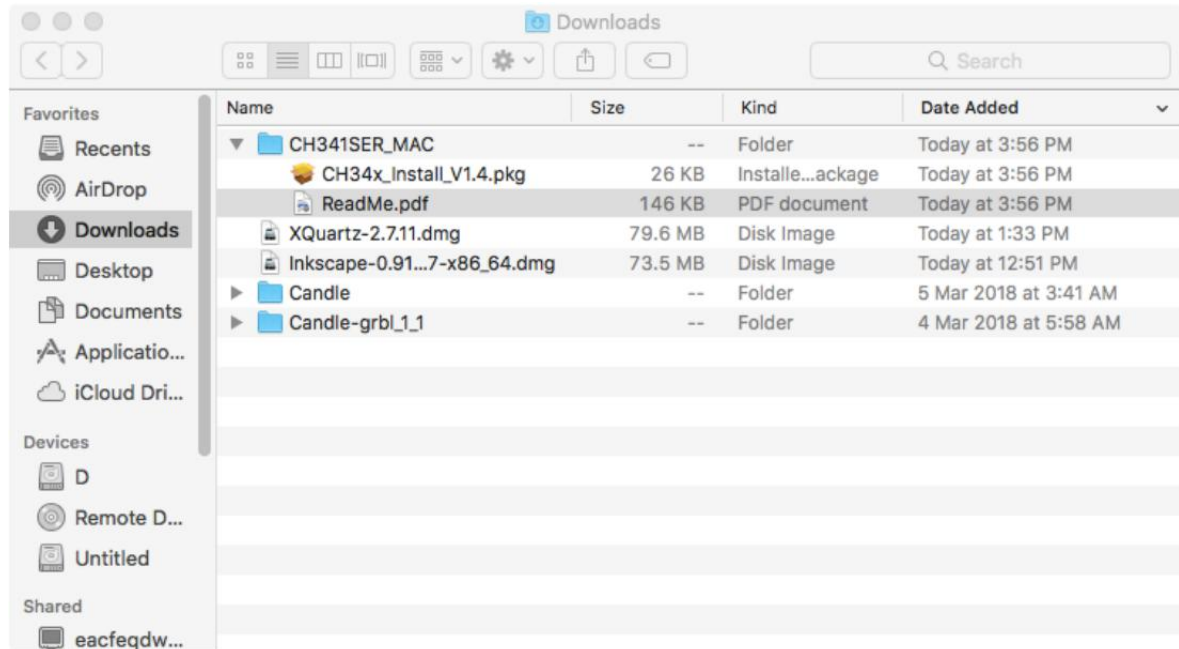
STEP 1:

Download [CH341SER_MAC.zip](#)

STEP 2:

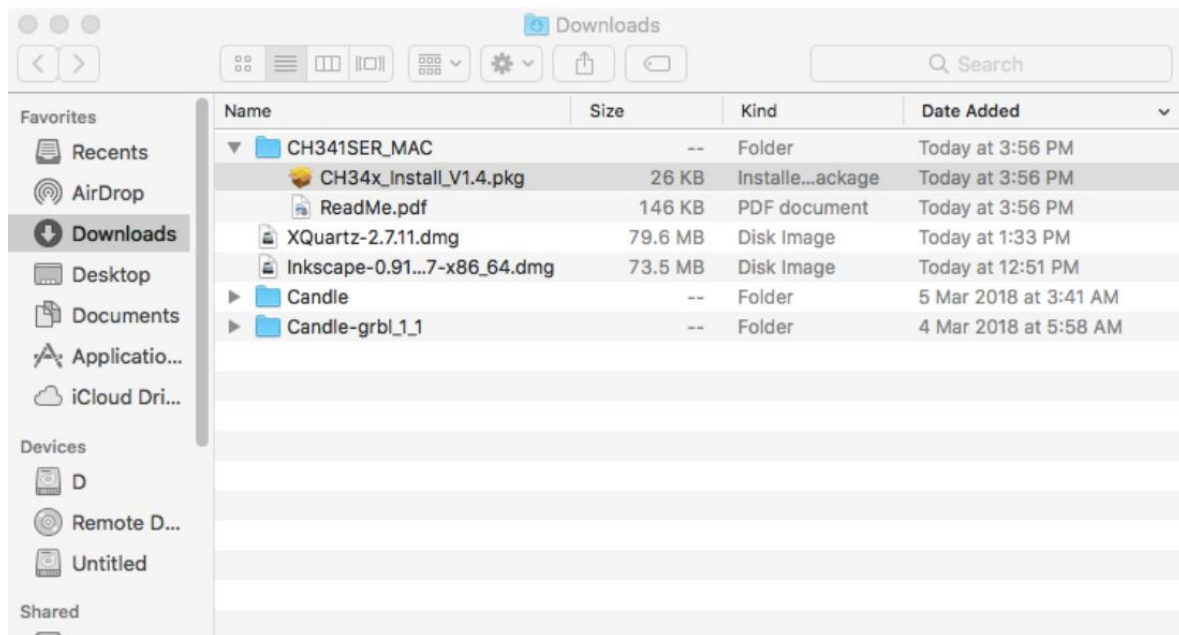
Find the CH341SER_MAC directory in the Download directory, you may unzip it in older Mac OS.

Double click the ReadMe.pdf to see the detail INSTRUCTIONS.



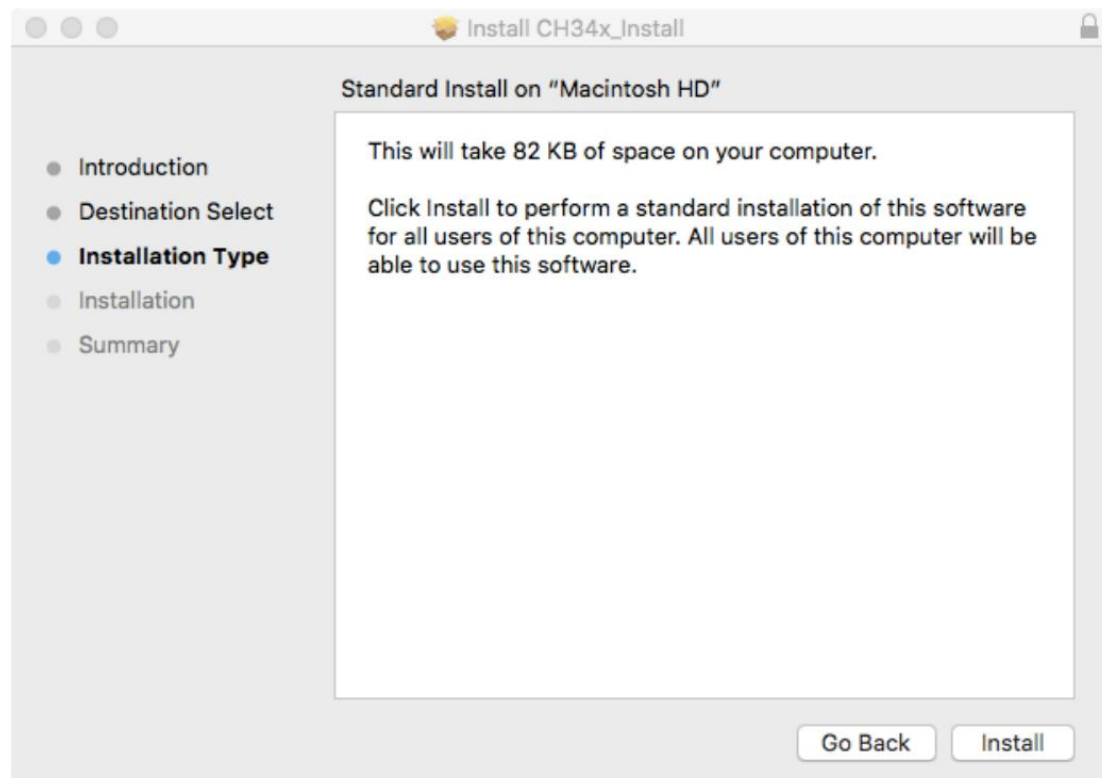
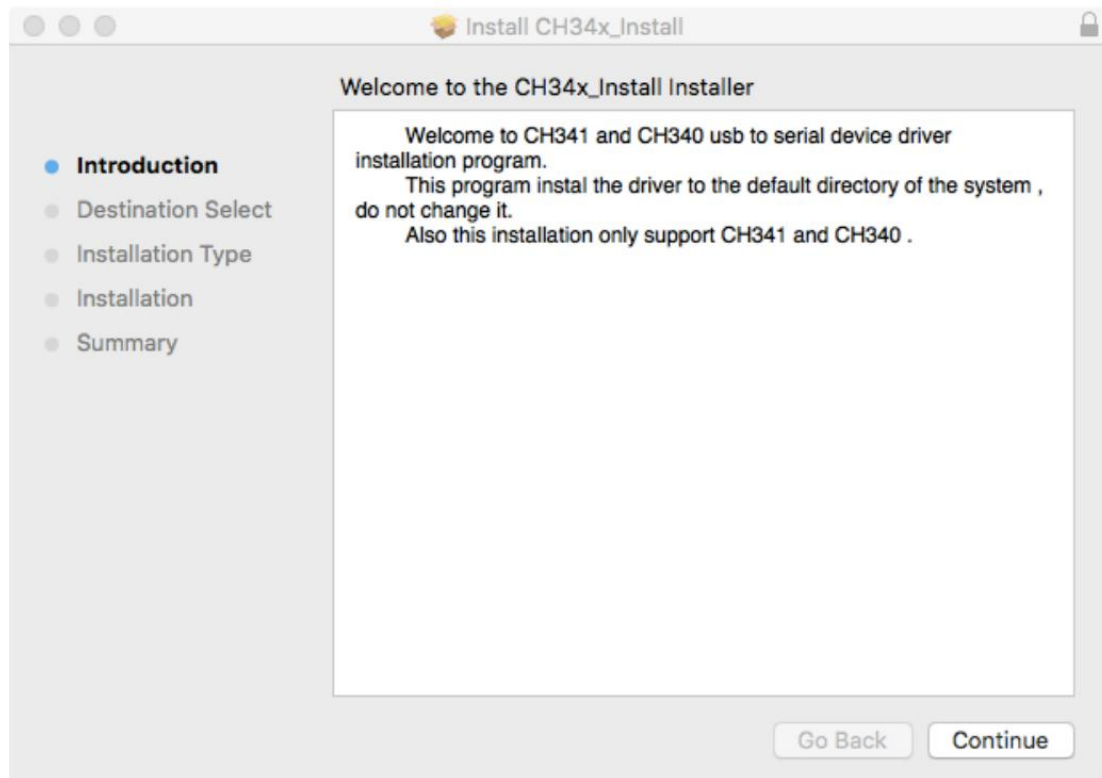
STEP 3:

Double-click CH34x_Install_V1.4.pkg

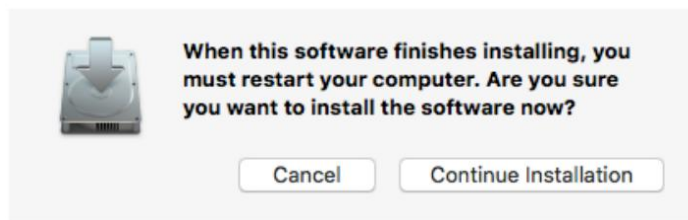


STEP 4:

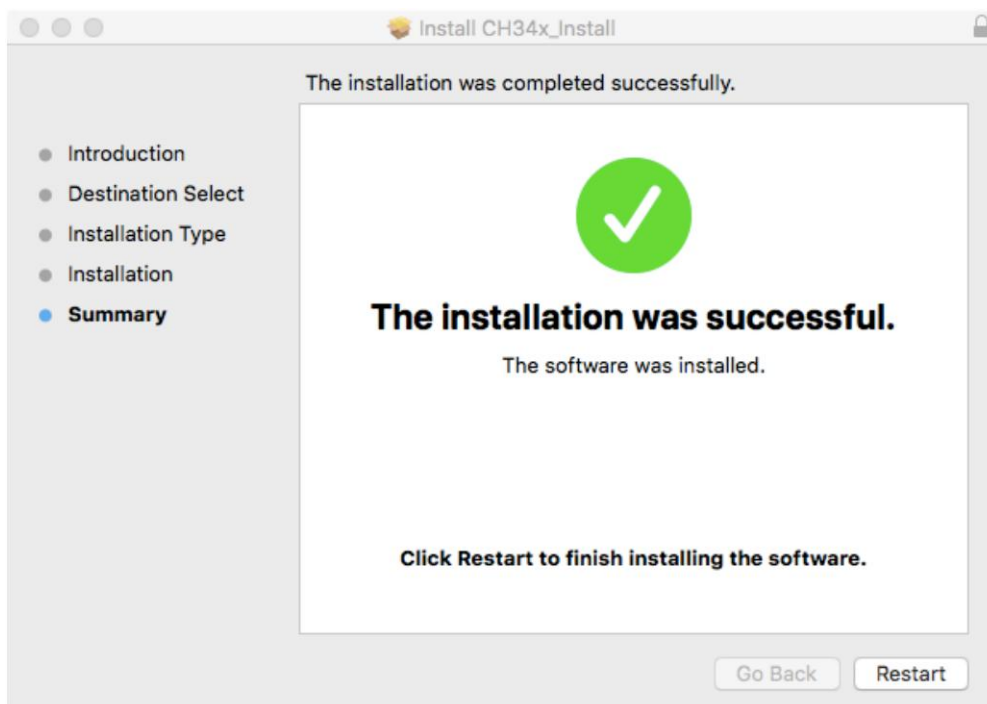
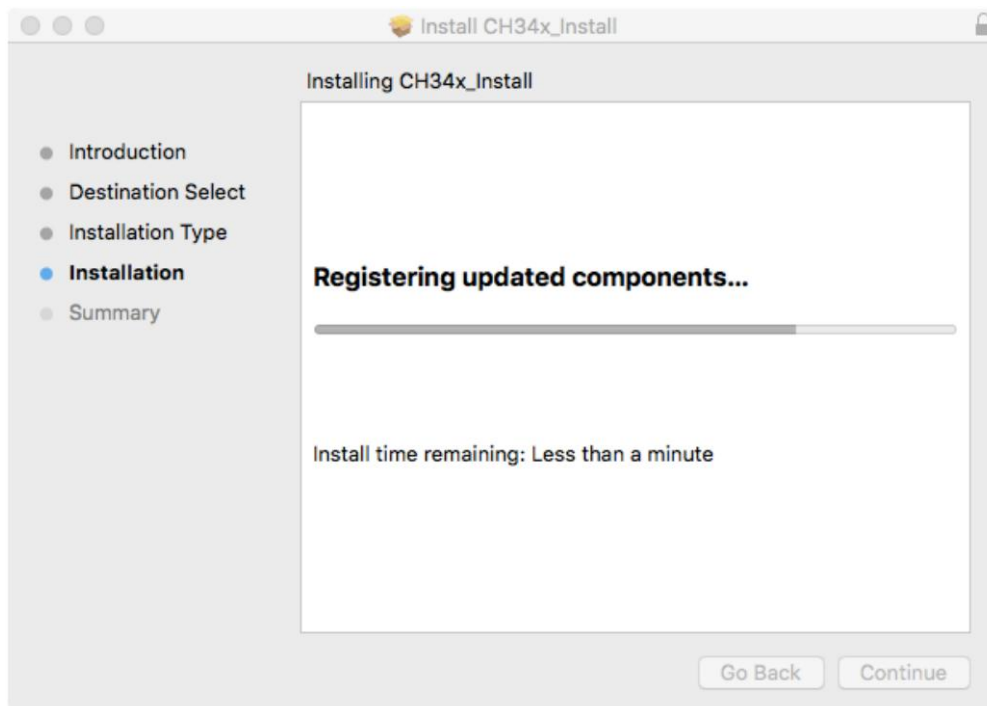
Just follow the Installer.



Click Install

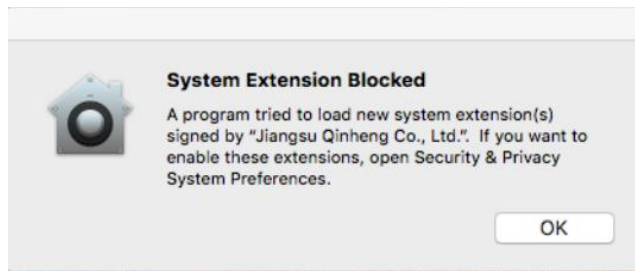


Click Continue Installation.

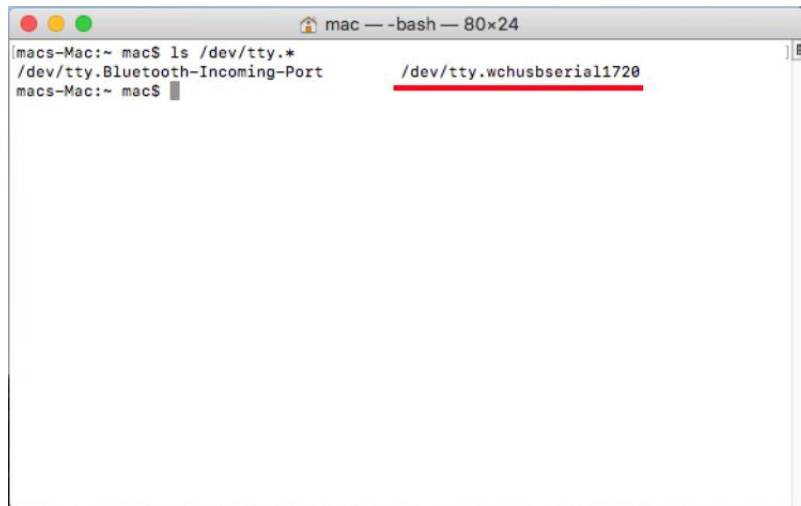


Click Restart.

If you see this message appeared.

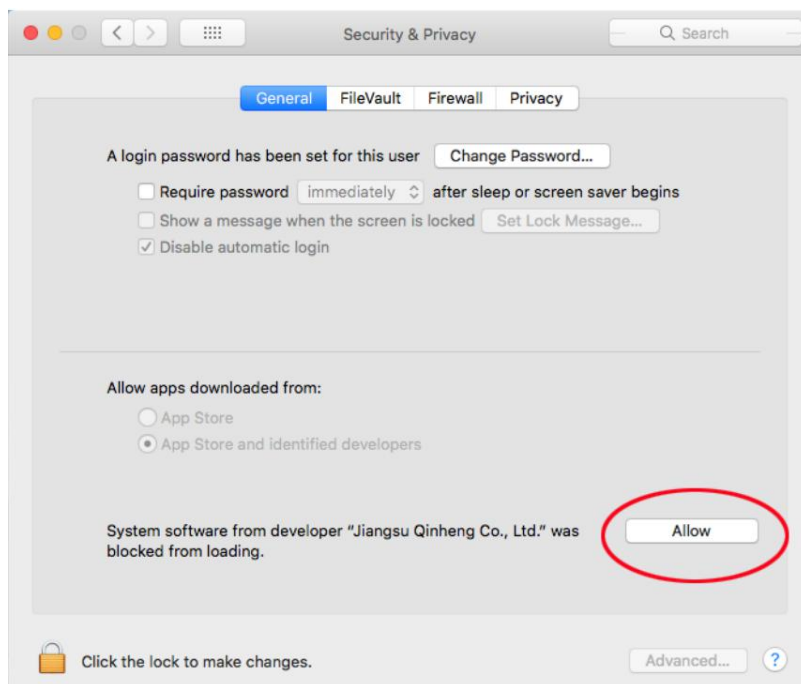


Or type `ls /dev/tty.*` in Terminal, but can not see a name like `tty.wchsubserialxxxxxx`.



The CH340 USB driver extension is blocked by Mac.

Allow CH340 USB driver from Mac Security & Privacy.



Notice:

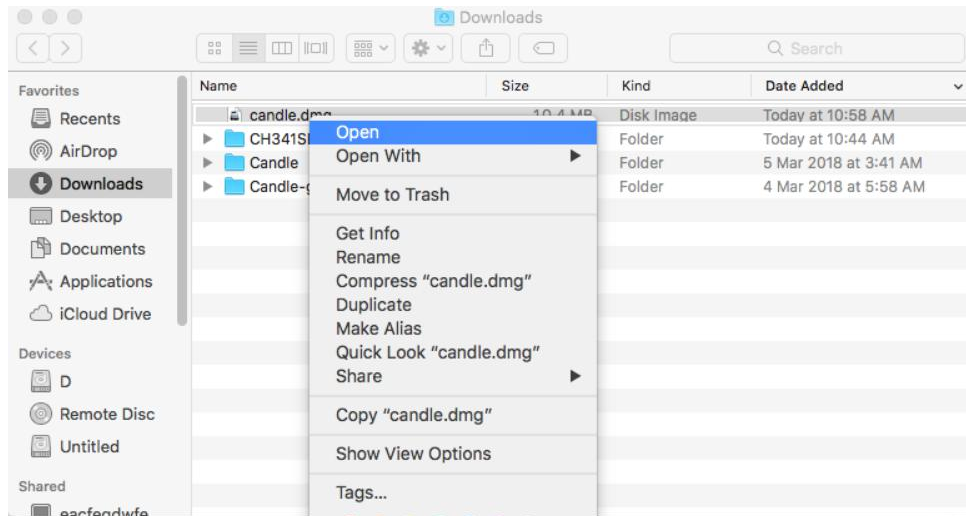
1. If something go wrong, please check INSTRUCTIONS in STEP 2, and do again.
2. You must allow the app when asked.

II. Download [Candle software](#)

In the Finder, locate the candle.dmg.

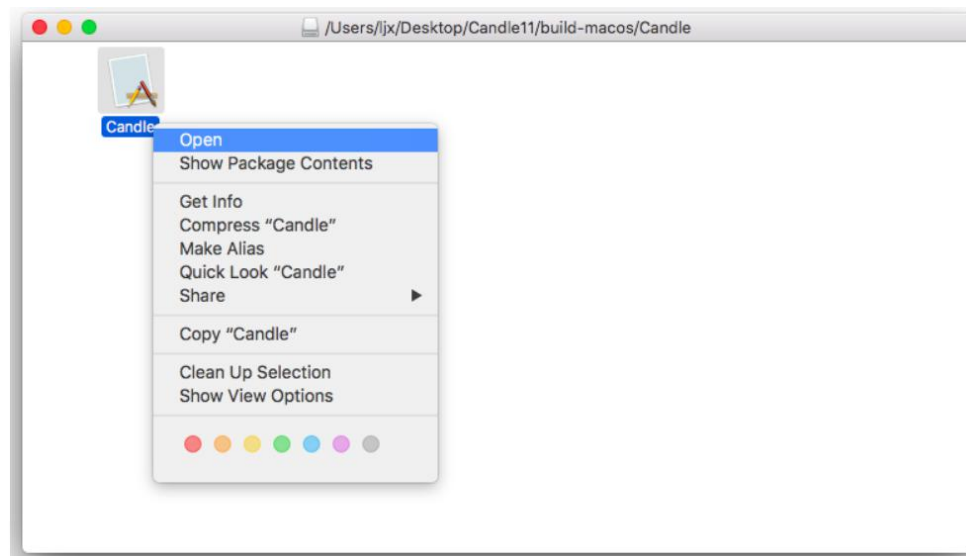
Right click or control click the candle.dmg.

Select "Open" from the menu.

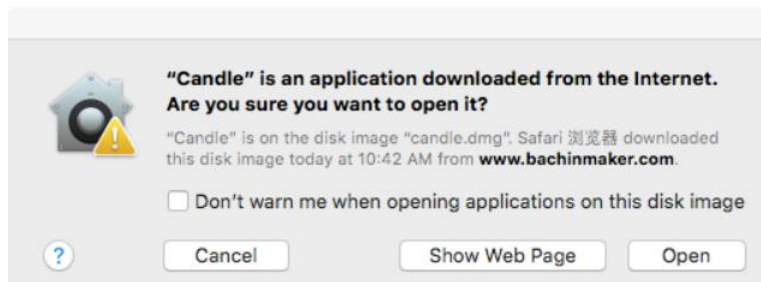


Right click the Candle Icon.

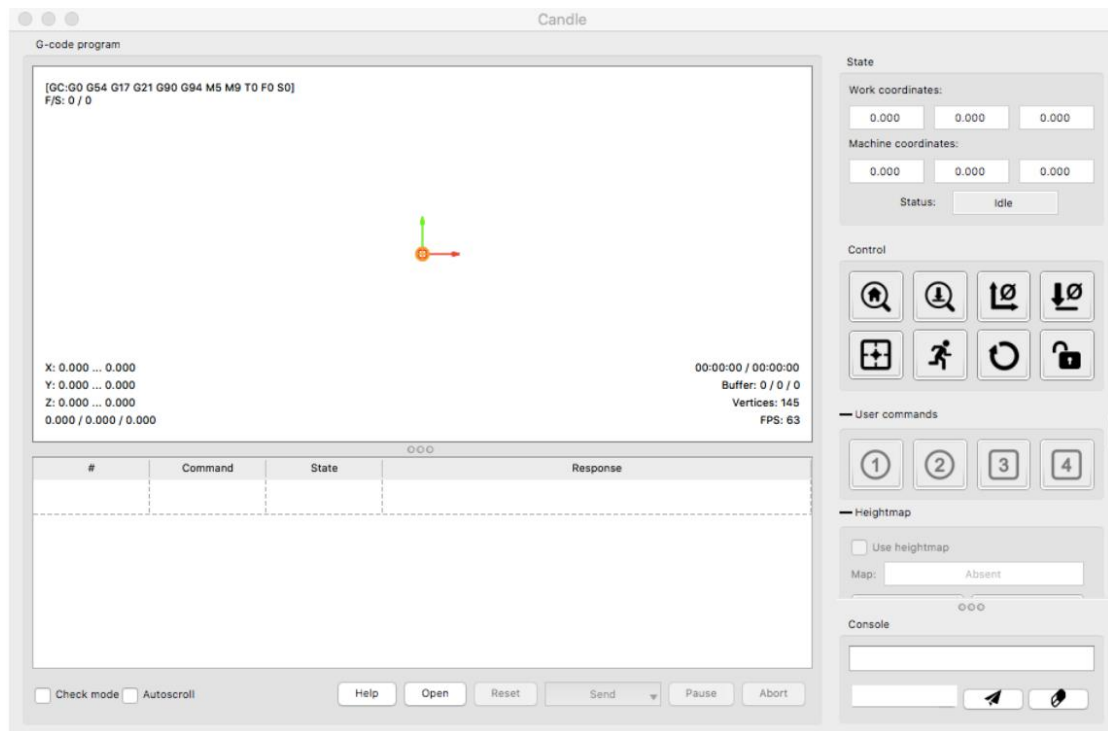
Select "Open" again.



You will see a warning message. Select the "Open" button.



Well, here goes the Candle.



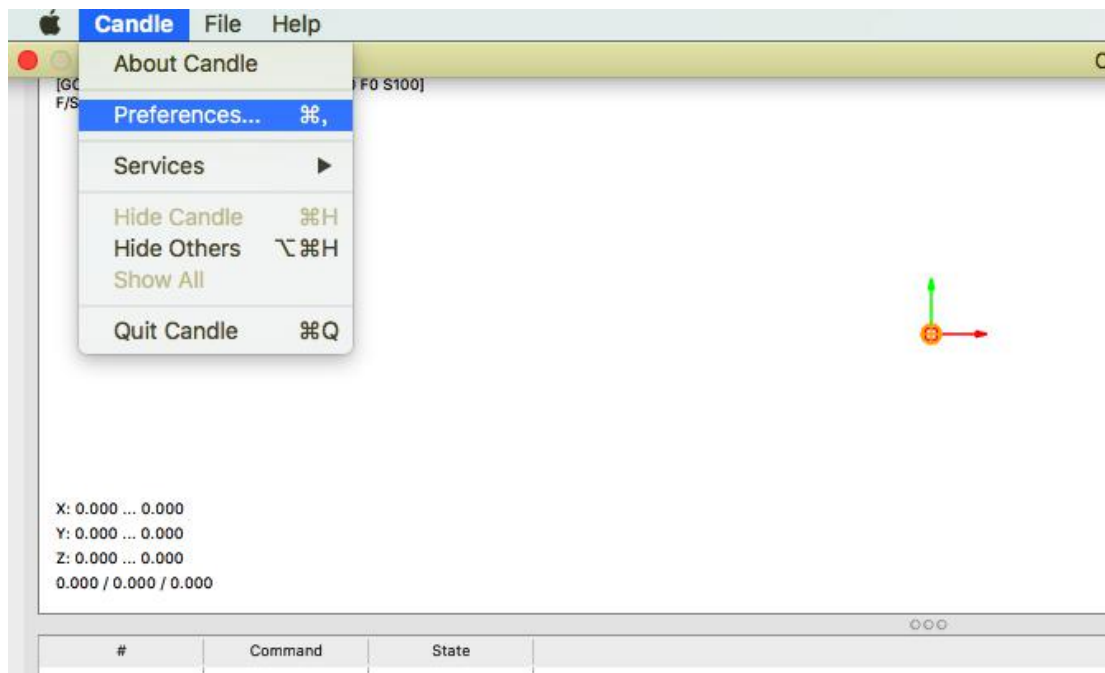
Check the Status label in the app. If you connect a CNC device to the Mac. The Status should be "Idle".

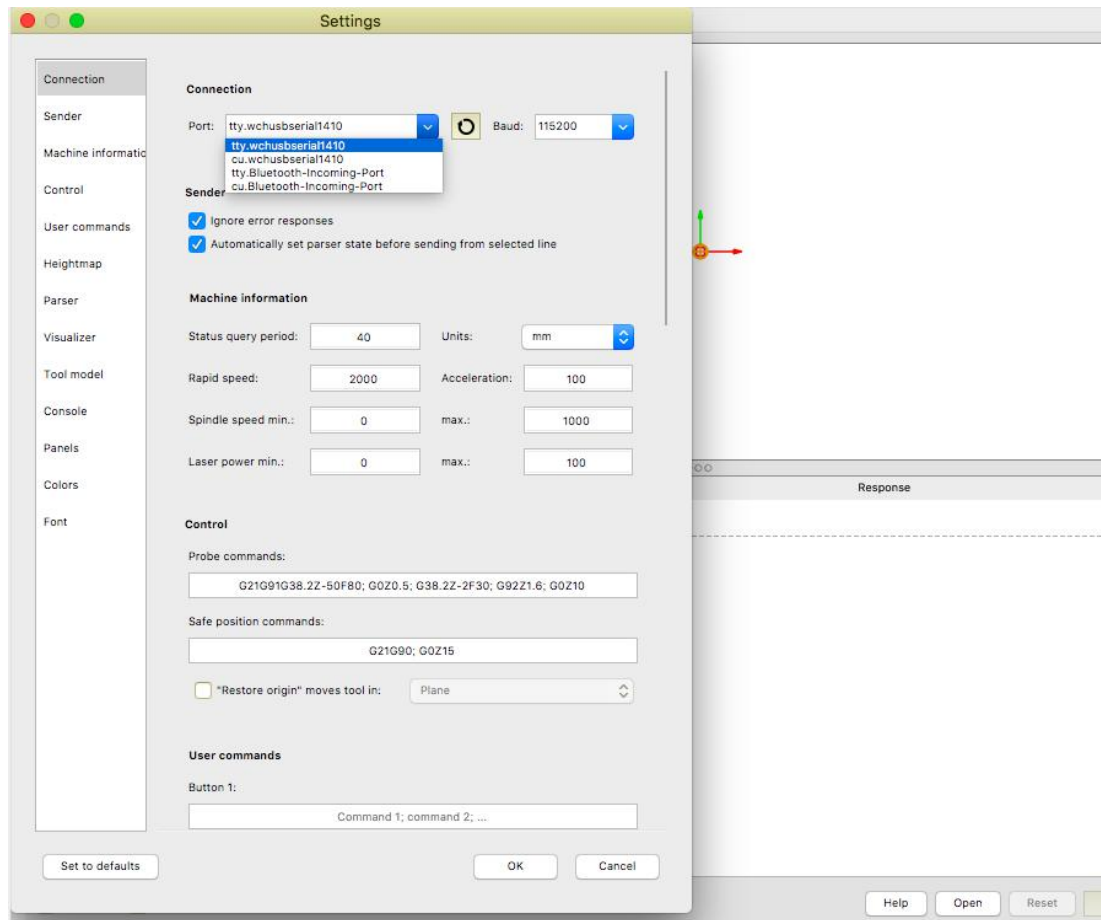
Other status:

Alarm—machine hit the end-stop switch.

Port Opened—may be the com port is wrong, check the port in settings.

Then select the port "tty.wchusbserial". **Path: Candle->Preferences->Port**

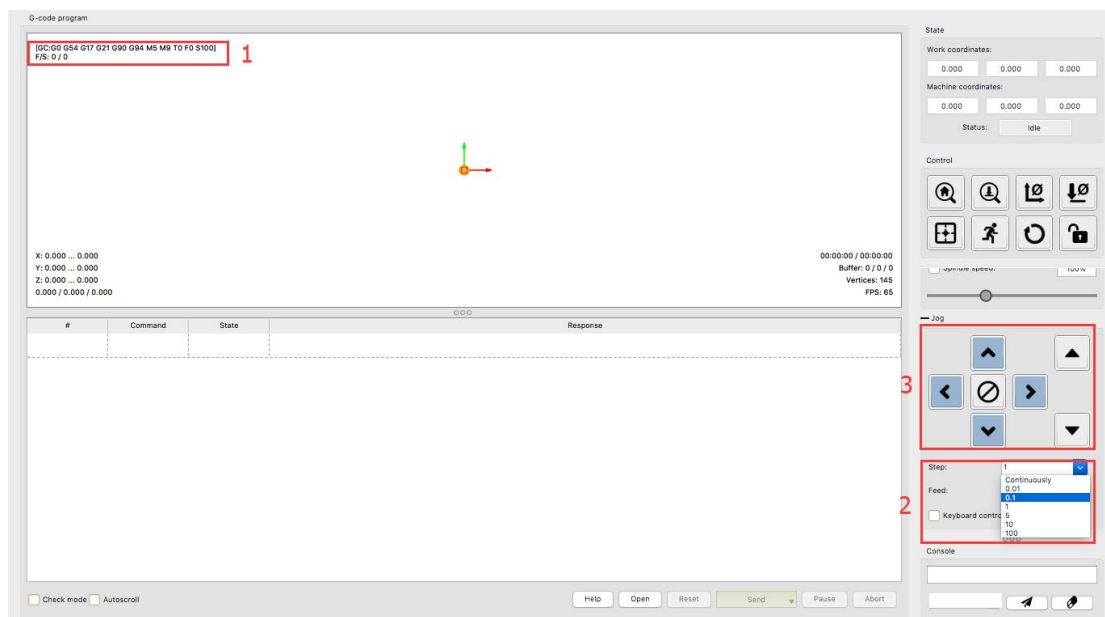




If the communication is successful, the code marked 1 will be displayed.

Choose **Step** and **Feed**.

Then test the XYZ axis movement.



III. Code Test

Open the gcode file and moving the machine to the origin



Click Zero XY and Zero Z



Finally, click Send

