

And Can it Be

Words by Charles Wesley
Music by Scott Roley
Arranged by J&M Littlepage

F Gm

And can it be that I
He left His Fa-ther's throne
Long my im-pri-soned spir-
No con-dem-na-tion now

Piano

B \flat C F Gm B \flat C

4

— should gain An in - terest in the Sav - ior's blood! Died He
— a - bove, So free, so in fi - nite His grace! Emp - tied
— it lay, Fast bound in sin and na - ture's night; Thine eye
— I dread; Je - sus, and all in Him, is mine; A - live

Pno.

F Gm B \flat C F Gm

7

— for me who caused His pain! For me who Him to death
— Him - self of all but love, And bled for A - dam's help -
— dif - fused a quick - ening ray; I woke, the dun - geon flamed
— in Him, my li - ving Head, And clothed in right - eous - ness

Pno.

And Can it Be

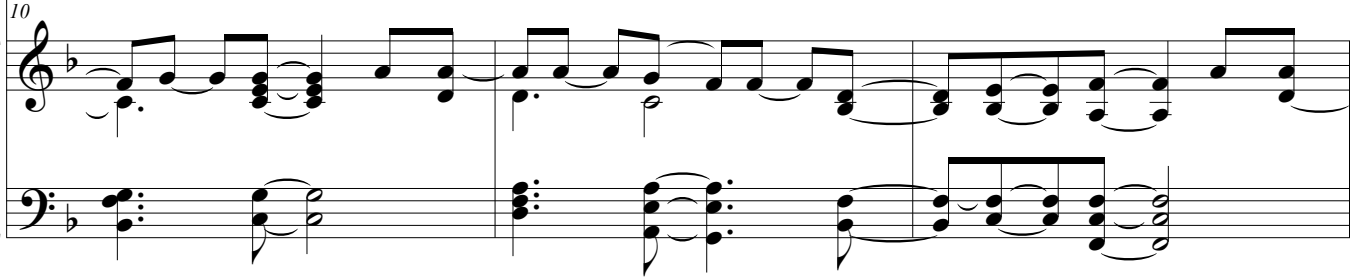
Bb C Dm Am Bb C F

10



— pur - sued? A - ma - zing love! How can it be, That Thou,
— less — race. 'Tis mer - cy all, im - mense and free, For O —
— with light; My chains fell off, my heart was free, I rose,
— di - vine, Bold I ap - proach the e - ter - nal throne, And claim

Pno.



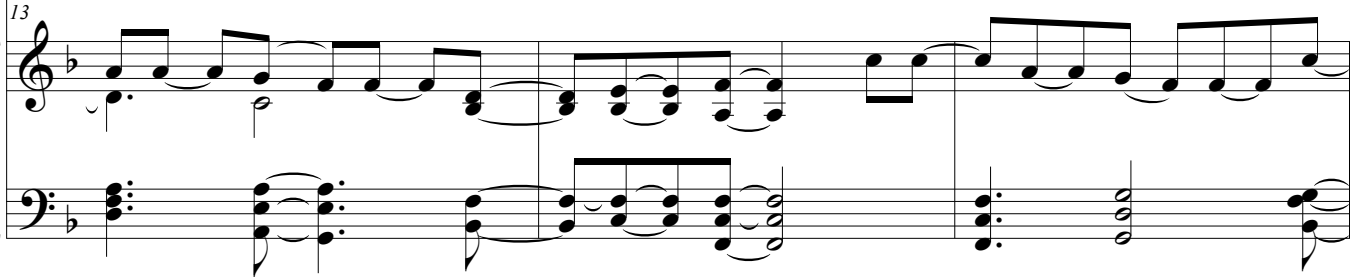
Dm Am Bb C F F Gm Bb

13



— my God, should die for me? A - ma - zing love! How can
— my God, it found out me! Thee. A - ma - zing love! How can
— went forth, and fol - lowed Thee. A - ma - zing love! How can
— the crown, through Christ my own.

Pno.



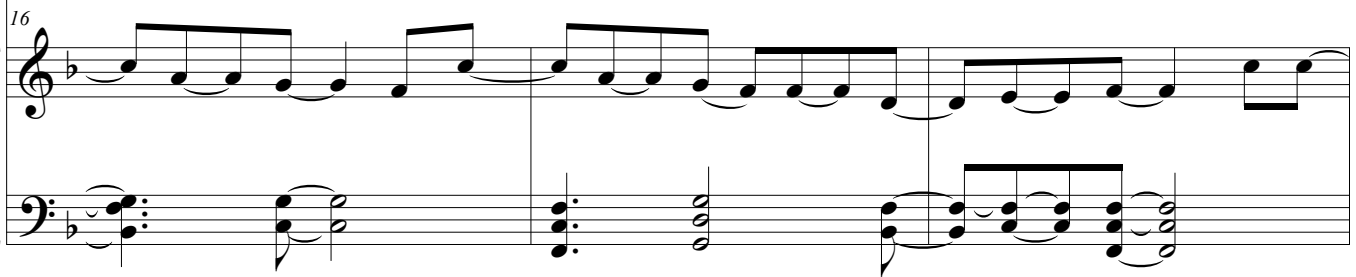
C F Gm Bb C F

16



— it be, That Thou, my God, should die for me? A - ma -

Pno.



And Can it Be

19 F Gm B♭ C F Gm B♭

- zing love! How can it be, That Thou, my God, should die

Detailed description: This block contains the vocal line for measures 19, 20, and 21. The melody is written in a single treble clef staff with a key signature of one flat (B-flat major). The notes are: 19: G4, A4, B4, C5, B4, A4, G4; 20: G4, A4, B4, C5, B4, A4, G4; 21: G4, A4, B4, C5, B4, A4, G4. Chords are indicated above the staff: F (measures 19-20), Gm (measures 19-20), B♭ (measures 19-20), C (measures 20-21), F (measures 21), Gm (measures 21), and B♭ (measures 21). The lyrics are: "- zing love! How can it be, That Thou, my God, should die".

Pno.

Detailed description: This block contains the piano accompaniment for measures 19, 20, and 21. It consists of two staves: a treble clef staff and a bass clef staff. The treble staff has a melody of eighth notes: 19: G4, A4, B4, C5, B4, A4, G4; 20: G4, A4, B4, C5, B4, A4, G4; 21: G4, A4, B4, C5, B4, A4, G4. The bass staff provides harmonic support with chords and moving lines. Chords are indicated above the treble staff: F (measures 19-20), Gm (measures 19-20), B♭ (measures 19-20), C (measures 20-21), F (measures 21), Gm (measures 21), and B♭ (measures 21).

22 C F Gm B♭ C

1, 2, 3. 4.

for me?

Detailed description: This block contains the vocal line for measure 22. The melody is written in a single treble clef staff with a key signature of one flat. The notes are: C5, B4, A4, G4. Chords are indicated above the staff: C (measures 1-3), F (measures 1-3), Gm (measures 4), B♭ (measures 4), and C (measures 4). The lyrics are: "for me?".

Pno.

22 1, 2, 3. 4.

Detailed description: This block contains the piano accompaniment for measure 22. It consists of two staves: a treble clef staff and a bass clef staff. The treble staff has a melody of eighth notes: C5, B4, A4, G4. The bass staff provides harmonic support with chords and moving lines. Chords are indicated above the treble staff: C (measures 1-3), F (measures 1-3), Gm (measures 4), B♭ (measures 4), and C (measures 4).