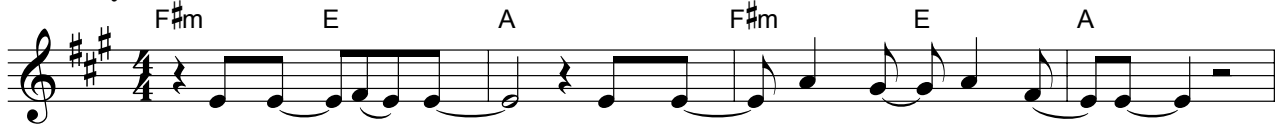


# WE REST ON THEE

Words by Edith G. Cherry  
Music by Patrick Bush  
and Brian T. Murphy

## Real Key



1. We rest on Thee, our Shield and our De - fend - er.  
2. We go in faith, our own great weak - ness feel - ing,  
3. We Rest on Thee, our Shield and our De - fend - er!



We go not forth, a - lone a - gainst the foe;  
And need - ing more each day Thy grace to know:  
Thine is the bat - tle, Thine shall be the praise.



Strong in Thy might, safe in Thy keep - ing ten - der,  
Yet from our hearts, a song of tri - umph plead - ing,  
When pass - ing through the gates of pear - ly splen - dor,



We rest on Thee, and in Thy name we go!  
We rest on Thee, and in Thy name we go.  
Vict - ors we rest with Thee, through end - less days.



Yea, in Thy name, O Cap - tain of sal - va - tion!



In Thy dear name, all o - ther names a - bove:

25 Bm F#m G A  
Je - sus our right - eous - ness, our sure found - a - tion, \_\_\_\_\_

29 Bm F#m G  
Our prince of glo - ry and our King \_\_\_\_\_ our King \_\_\_\_\_

32 A D G D  
\_\_\_\_\_ of love.