



Together, we deliver.

# Peak Season Metrics Summary

Thursday, 27-Aug-20



Data Source:

DPS Analytics (24-Aug-20)

IAL Report (25-Aug-20)

Week Number	Ending Date
1	4-Jan-20
2	11-Jan-20
3	18-Jan-20
4	25-Jan-20
5	1-Feb-20
6	8-Feb-20
7	15-Feb-20
8	22-Feb-20
9	29-Feb-20
10	7-Mar-20
11	14-Mar-20
12	21-Mar-20
13	28-Mar-20
14	4-Apr-20
15	11-Apr-20
16	18-Apr-20
17	25-Apr-20
18	2-May-20
19	9-May-20
20	16-May-20
21	23-May-20
22	30-May-20
23	6-Jun-20
24	13-Jun-20
25	20-Jun-20
26	27-Jun-20

Week Number	Ending Date
27	4-Jul-20
28	11-Jul-20
29	18-Jul-20
30	25-Jul-20
31	1-Aug-20
32	8-Aug-20
33	15-Aug-20
34	22-Aug-20
35	29-Aug-20
36	5-Sep-20
37	12-Sep-20
38	19-Sep-20
39	26-Sep-20
40	3-Oct-20
41	10-Oct-20
42	17-Oct-20
43	24-Oct-20
44	31-Oct-20
45	7-Nov-20
46	14-Nov-20
47	21-Nov-20
48	28-Nov-20
49	5-Dec-20
50	12-Dec-20
51	19-Dec-20
52	26-Dec-20

Current



# Pickup Summary

UNCLASSIFIED

Together, we deliver.

Pie chart depicts Weeks 20-35

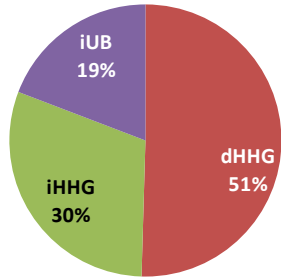


Table depicts Weeks 20-35 pick ups

Market	Total	COS	Shipments	Percent
dHHG	65,742	2	5,789	8.8%
		D	59,953	91.2%
iHHG	39,543	4	38,160	96.5%
		6	165	0.4%
		T	1,218	3.1%
iUB	25,005	7	288	1.2%
		8	2,743	11.0%
		J	21,974	87.9%
Total			130,290	
3-Yr Historical Average			147,071	

Table depicts Week 34

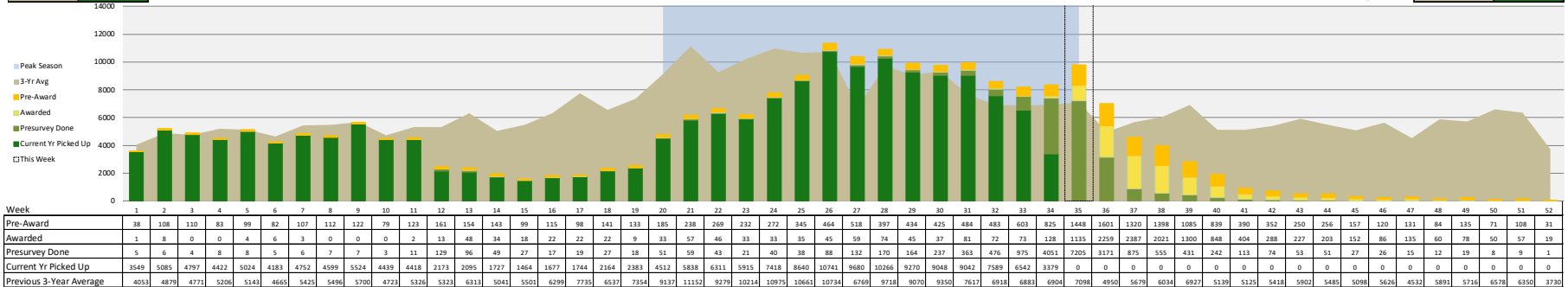
Process Segment	3-Yr Avg	2020
Members Counseled	7,429	7,845
Shipments Awarded	6,128	6,219
Shipments Picked Up	6,904	3,379

Hist. Avg. Past Year

344,168 279,722

DPS Annual Shipments

Pickups and Booking Queue



Hist. Avg. This Year

140,437 111,013

DPS Peak Season Shipments

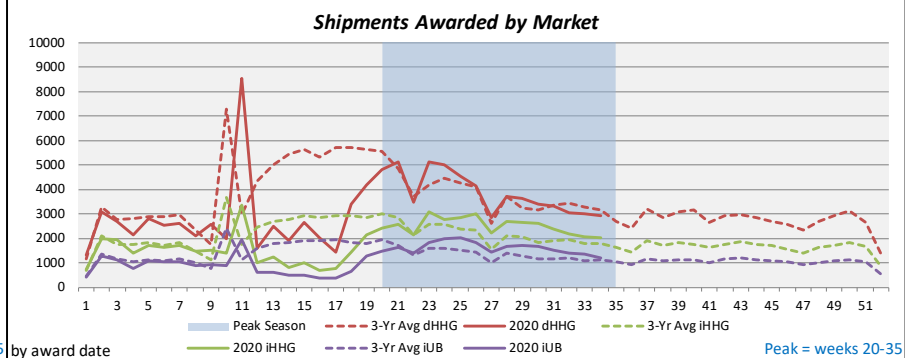
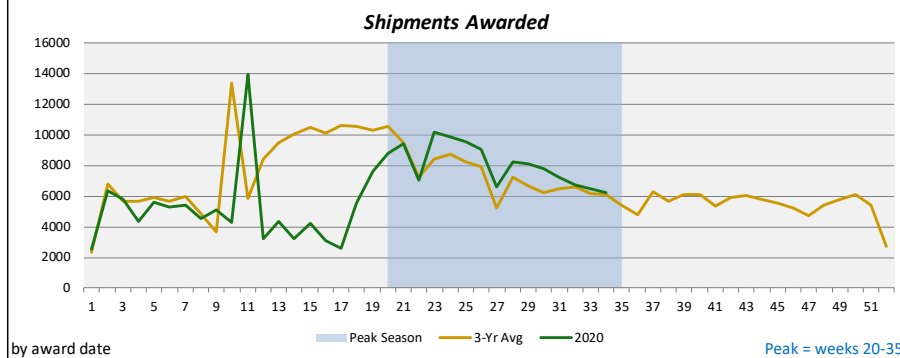
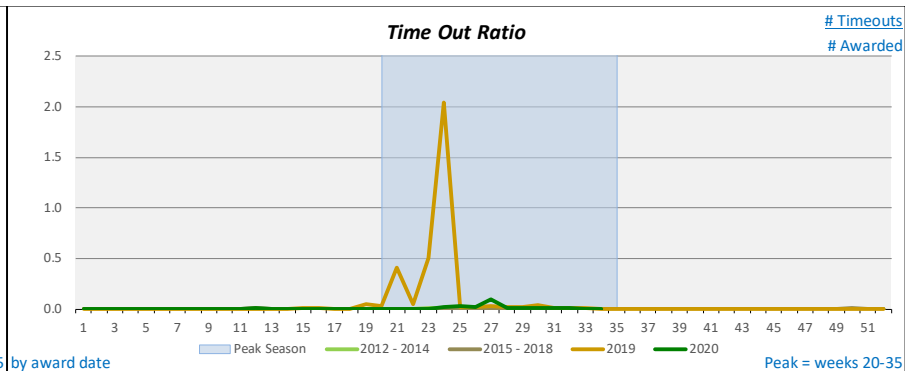
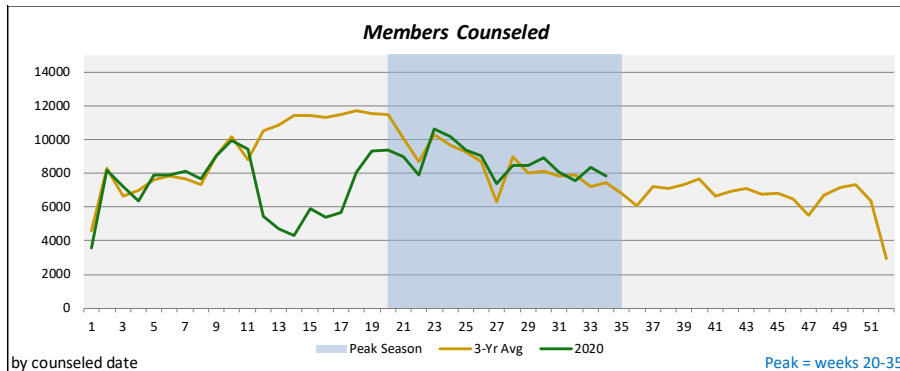
UNCLASSIFIED



# Pre-Pickup

UNCLASSIFIED

Together, we deliver.



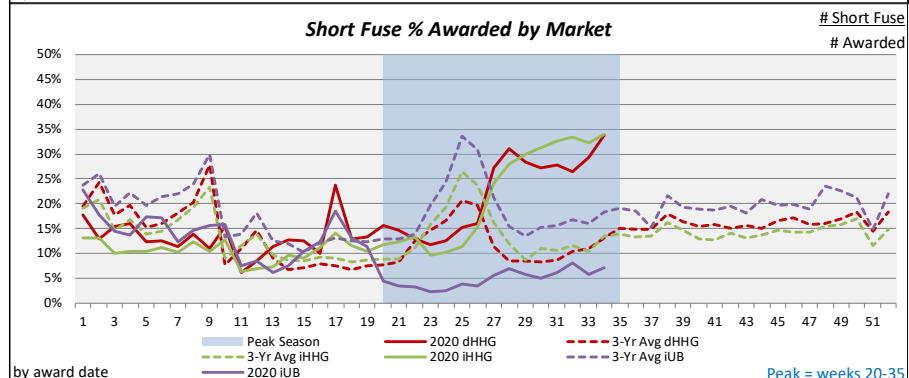
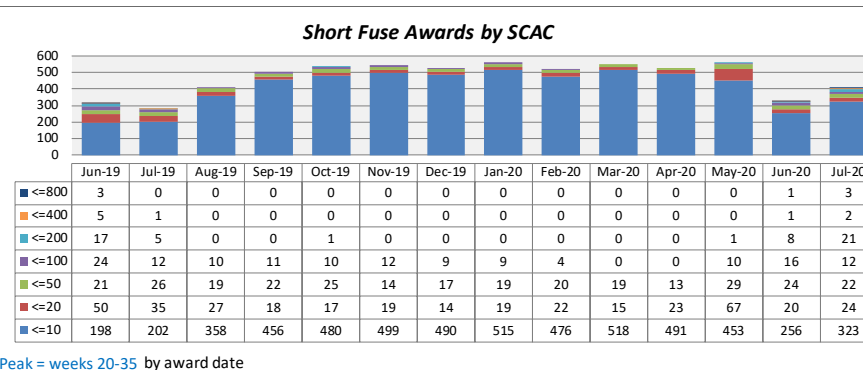
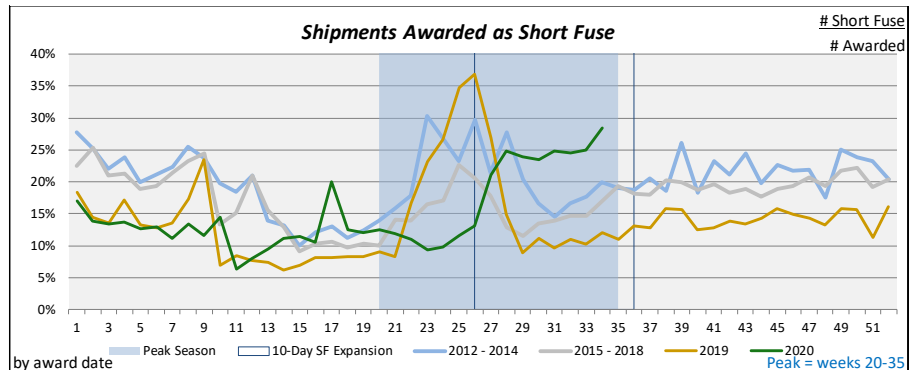
2020 Week 35

UNCLASSIFIED



# Short Fuse

Together, we deliver.



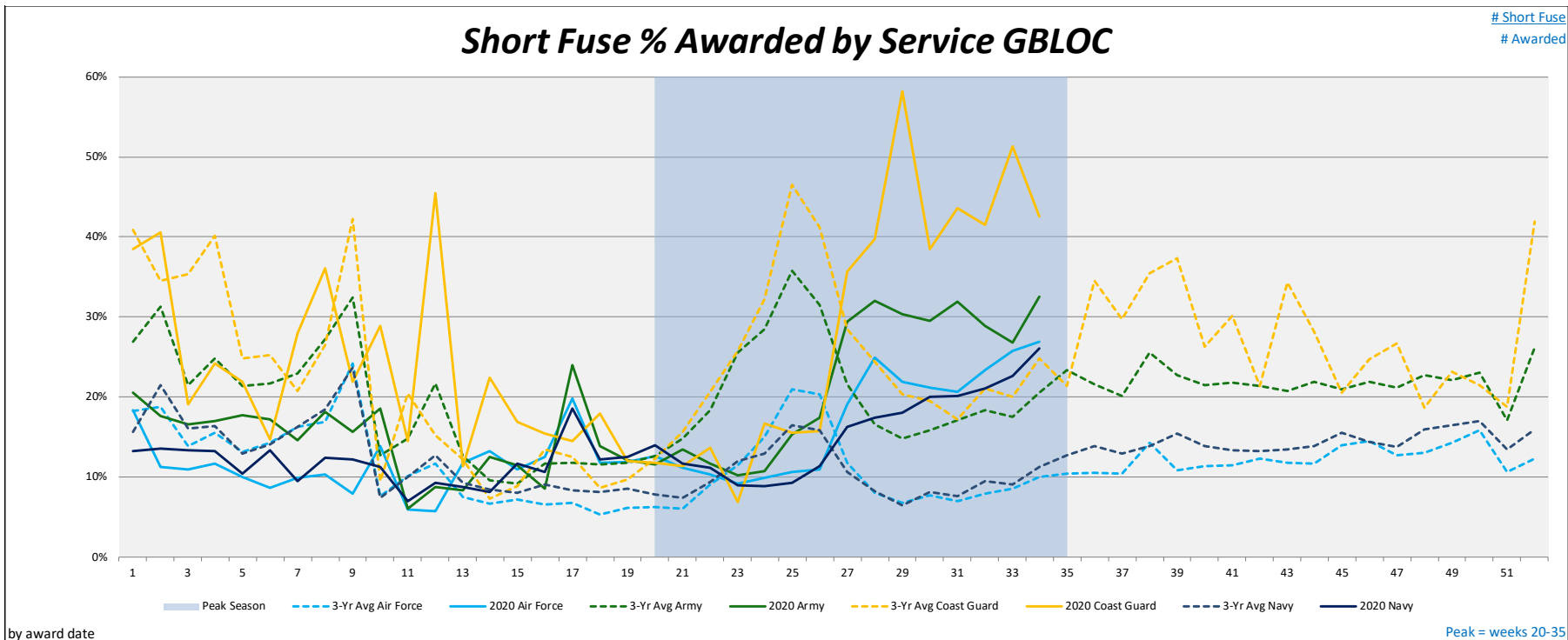
### Total Short Fuse Awards

	Total Awards	SF Awards	% SF	Prev Yr % SF	SF SCACs	SF Ship'ts per SCAC
Jul-19	28,391	4,075	14.4%	6.9%	281	14.50
Aug-19	27,255	2,957	10.8%	13.1%	414	7.14
Sep-19	22,445	3,206	14.3%	16.3%	507	6.32
Oct-19	26,788	3,546	13.2%	15.1%	533	6.65
Nov-19	21,309	3,139	14.7%	15.7%	544	5.77
Dec-19	20,970	3,059	14.6%	17.2%	530	5.77
Jan-20	23,299	3,195	13.7%	14.8%	562	5.69
Feb-20	20,335	2,572	12.6%	15.1%	522	4.93
Mar-20	26,881	2,216	8.2%	8.0%	552	4.01
Apr-20	16,458	2,088	12.7%	7.6%	527	3.96
May-20	34,318	4,097	11.9%	9.6%	560	7.32
Jun-20	41,721	4,889	11.7%	30.1%	326	15.00
Jul-20	34,395	8,236	23.9%	14.4%	407	20.24
Average	26,348	3,600	13.5%	14.9%	499	7.22



# Short Fuse

Together, we deliver.



2020 Week 35

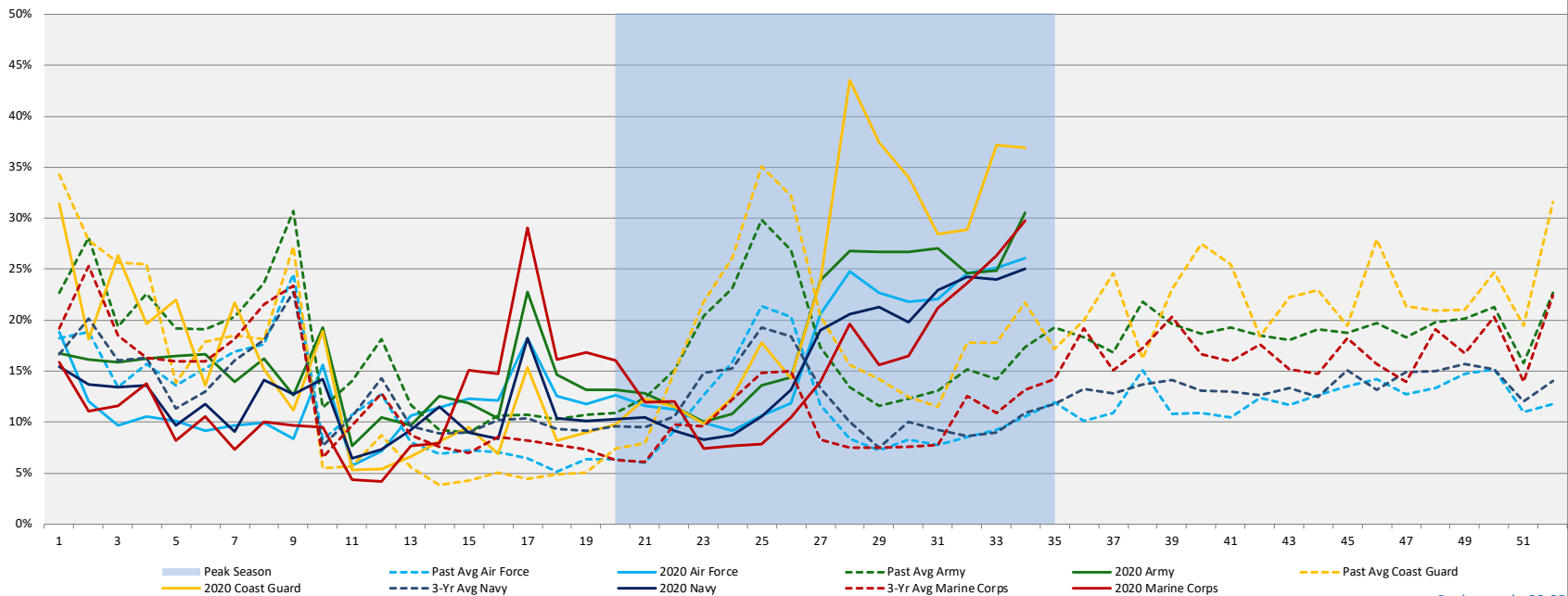


# Short Fuse

Together, we deliver.

## Short Fuse % Awarded by Branch of Service

# Short Fuse  
# Awarded



by award date

Peak = weeks 20-35

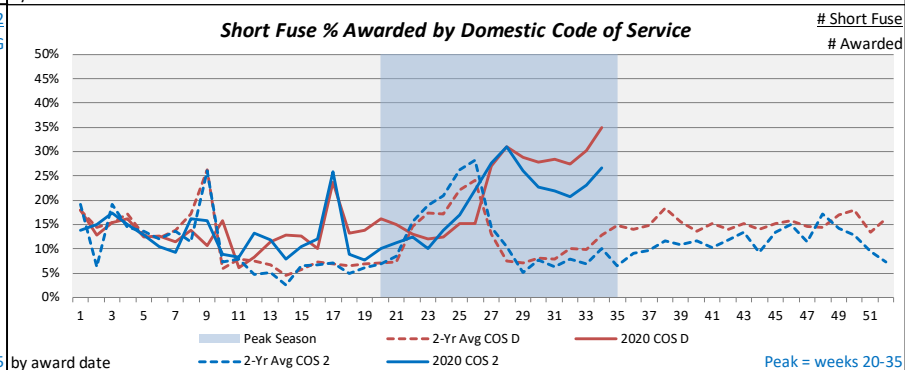
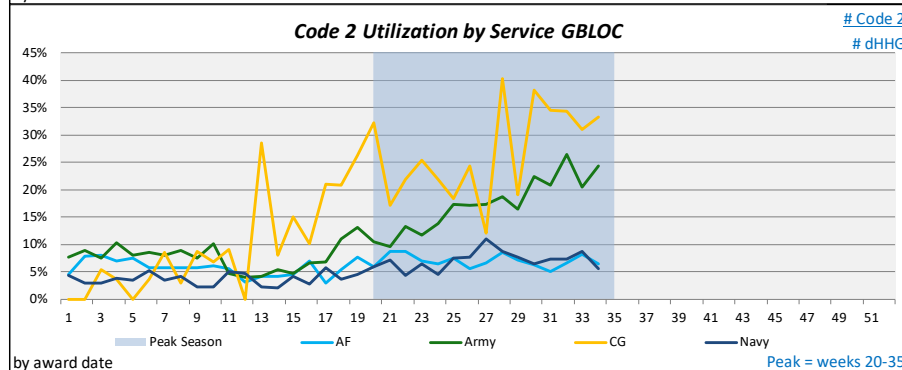
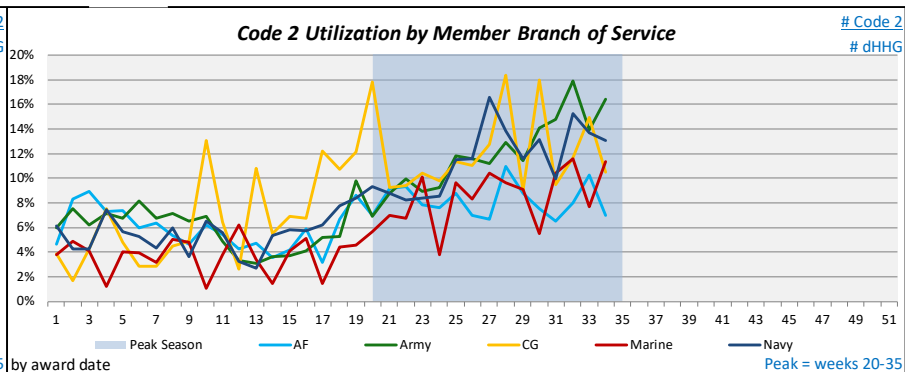
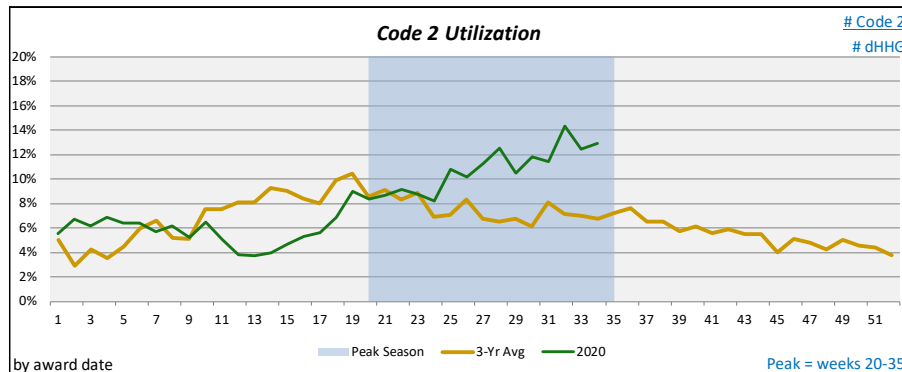
2020 Week 35



# Code 2

UNCLASSIFIED

Together, we deliver.



2020 Week 35

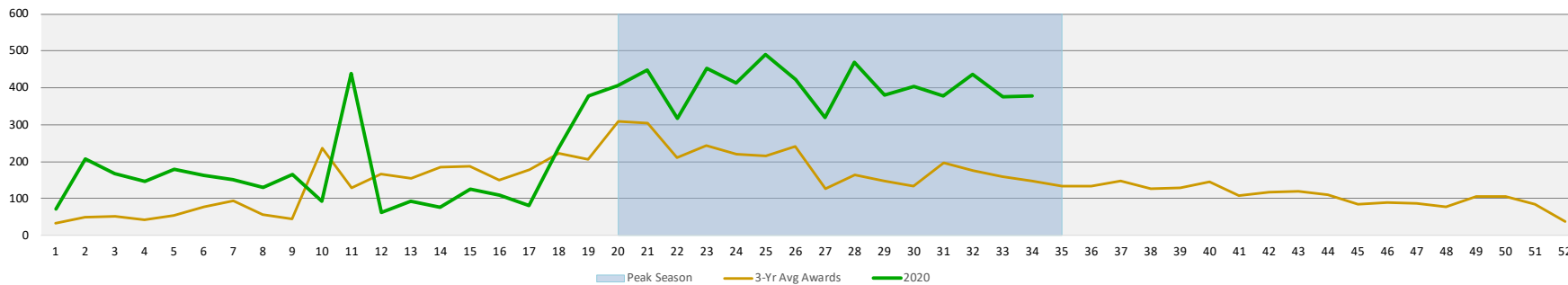
UNCLASSIFIED



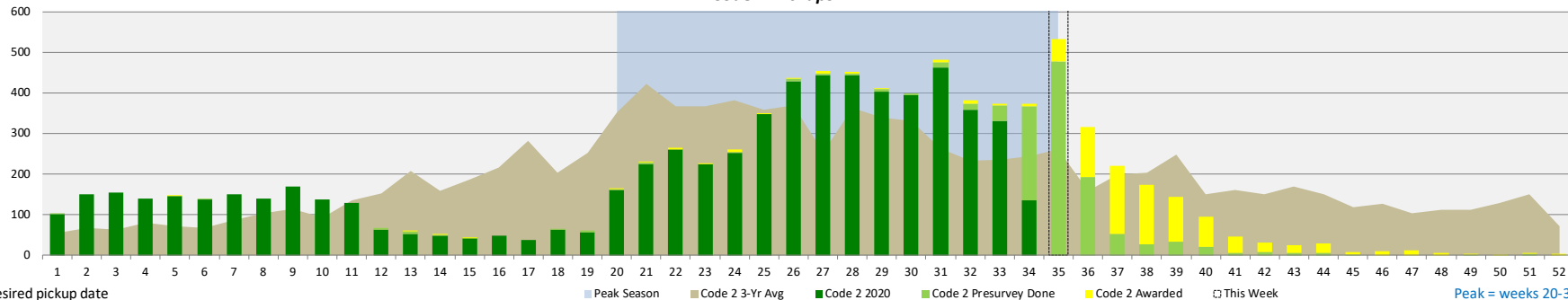
# Code 2 Award and Pickup Summary

Together, we deliver.

### Code 2 Awards



### Code 2 Pickups



by desired pickup date

2020 Week 35

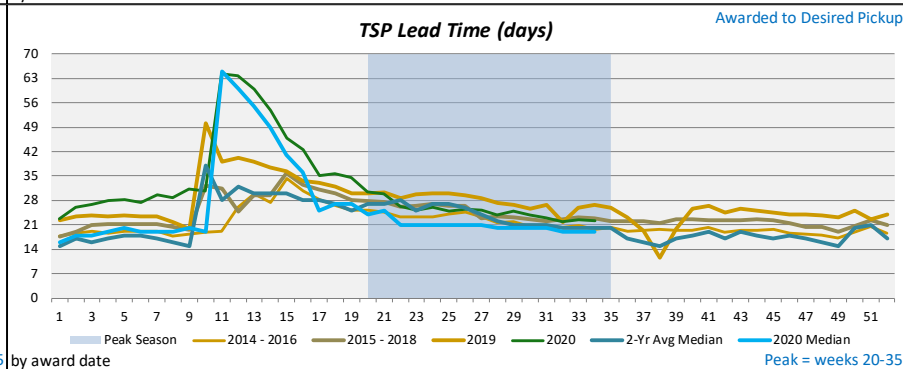
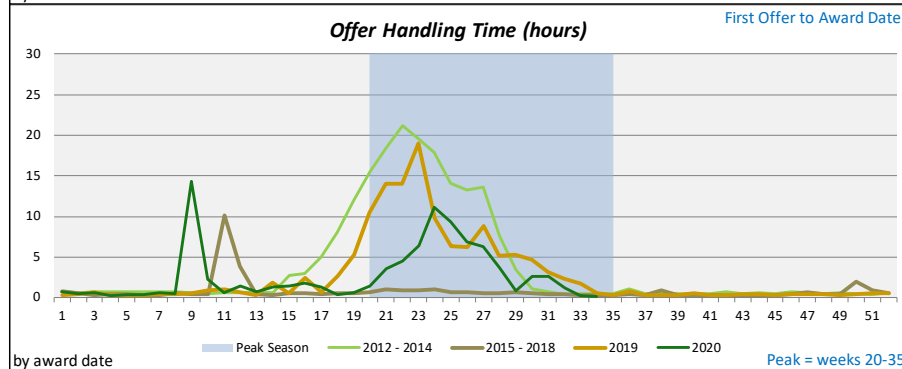
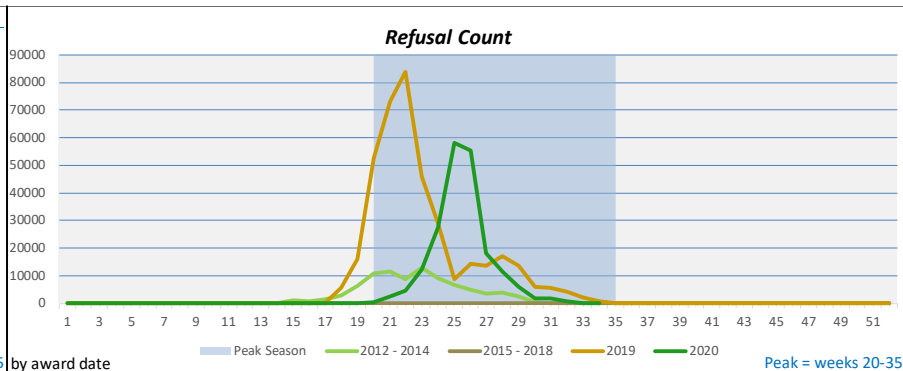
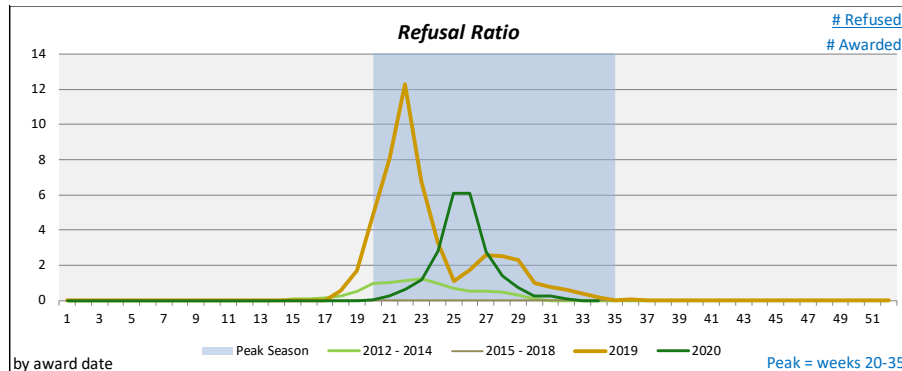
Peak = weeks 20-35





# Shipment Award

Together, we deliver.

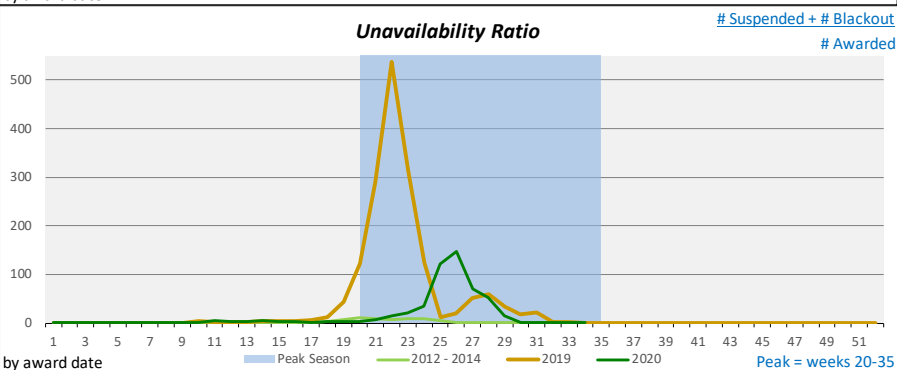
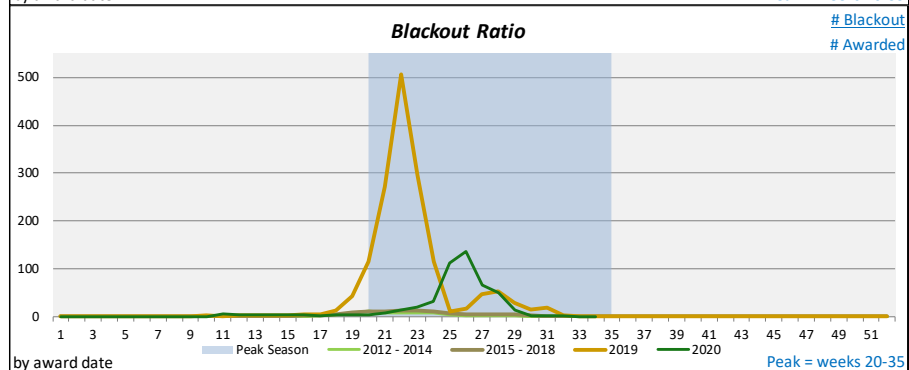
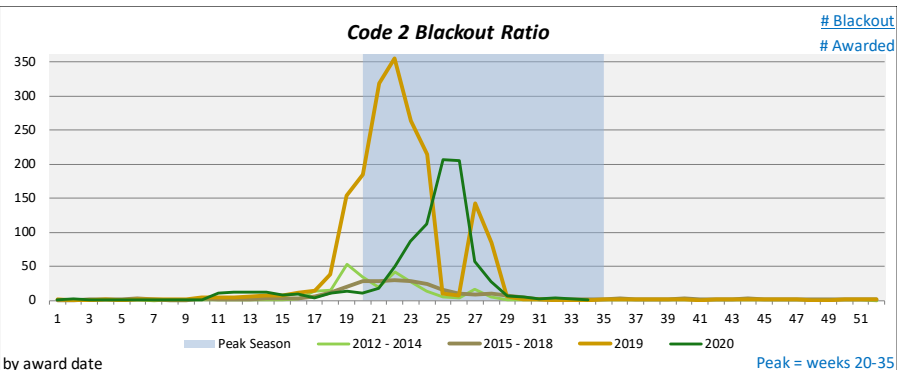
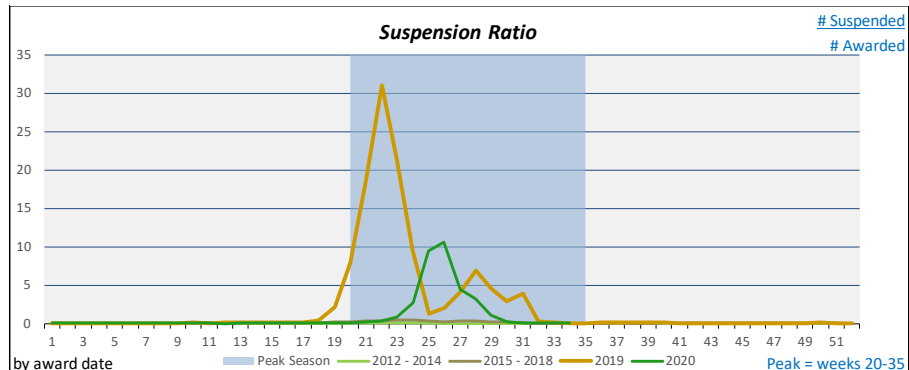


2020 Week 35



# Availability Measures

Together, we deliver.



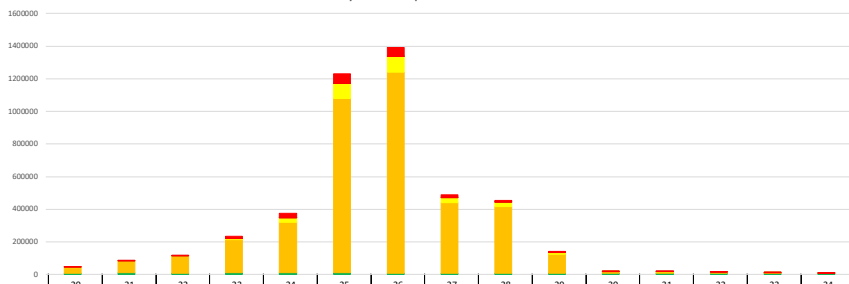
2020 Week 35



# Impact of Refusals

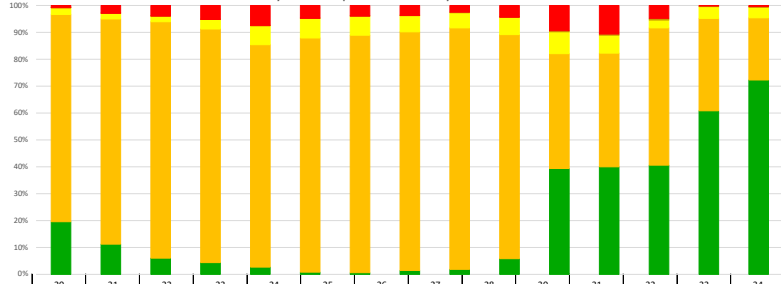
Together, we deliver.

Weekly HHG Shipment Offers



Week	20	21	22	23	24	25	26	27	28	29	30	31	32	33	34
<b>2020</b>															
Accept	8804	9415	7088	10161	9809	9509	9066	6548	8224	8083	7771	7243	6699	6503	6219
Administrative Black Out	34592	70595	102850	202593	309742	1070359	1231580	435257	408677	117759	8432	7660	8436	3673	1991
Administrative Suspension	1172	1755	2467	8292	26594	90601	96727	29260	26368	8992	1605	1219	506	454	354
Offer Time Out	4	3	11	38	220	323	216	860	108	75	85	92	88	29	16
Refuse	312	2389	4612	12117	27572	58117	55255	18031	11586	6044	1834	1905	786	22	26
2020 Total Offers	44884	84157	117028	233201	373937	1228909	1392814	489746	454963	140953	19727	18119	16515	10681	8606
<b>2019</b>															
Accept	10665	9036	6800	6771	8587	8141	8224	5398	6698	5934	6041	7110	6714	5970	6159
Administrative Black Out	1225995	2454138	3441704	1998283	984994	96100	145902	257081	353428	175236	95813	128577	172114	10471	5098
Administrative Suspension	85243	166285	211609	143043	81985	10853	16687	21748	46381	27071	17732	28359	1617	921	639
Offer Time Out	338	3694	308	3409	17511	154	132	149	159	136	226	76	67	47	16
Refuse	52699	73063	83698	45879	28786	8919	14292	13783	17048	13625	6104	5514	4190	2329	931
2019 Total Offers	1374940	2706216	3744119	2197385	1121863	124167	185237	298159	423714	222002	125916	169636	29802	19648	12843

Weekly HHG Shipment Offers by Percent of All Offers



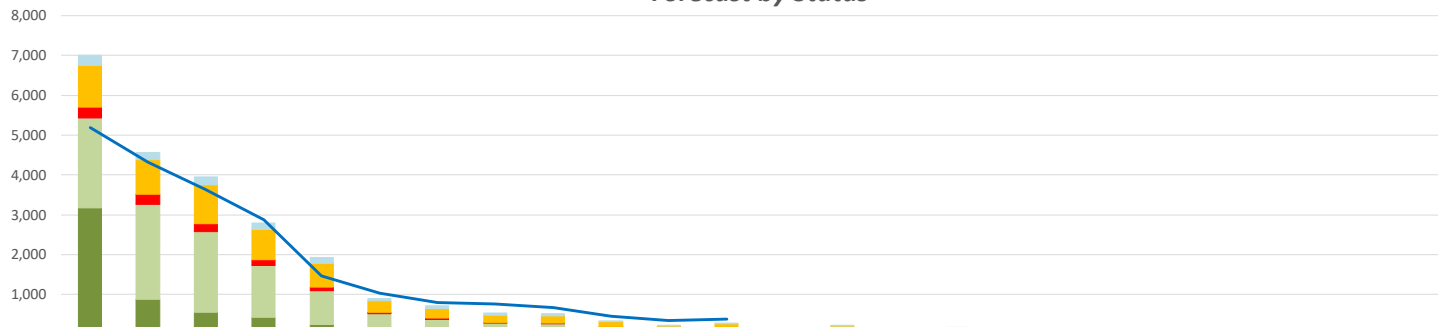
Week	20	21	22	23	24	25	26	27	28	30	31	32	33	34
<b>2020</b>														
Accept	19.62%	11.19%	6.06%	4.36%	2.62%	0.77%	0.65%	1.34%	1.81%	39.39%	39.97%	40.56%	60.88%	72.26%
Administrative Black Out	77.07%	83.88%	87.88%	86.87%	82.83%	87.10%	88.42%	88.87%	89.83%	42.74%	42.28%	51.08%	34.39%	23.14%
Administrative Suspension	2.61%	2.09%	2.11%	3.56%	7.11%	7.37%	6.94%	5.97%	5.80%	8.14%	6.73%	3.06%	4.25%	4.11%
Offer Time Out	0.01%	0.00%	0.01%	0.02%	0.06%	0.03%	0.02%	0.13%	0.02%	0.43%	0.51%	0.53%	0.27%	0.19%
Refuse	0.70%	2.84%	3.94%	5.20%	7.37%	4.73%	3.96%	3.68%	2.55%	9.30%	10.51%	4.76%	0.21%	0.30%
<b>2019</b>														
Accept	0.78%	0.33%	0.18%	0.31%	0.77%	6.56%	4.44%	1.81%	1.58%	4.80%	4.19%	22.53%	30.38%	47.96%
Administrative Black Out	89.17%	90.69%	91.92%	90.94%	87.80%	77.40%	78.77%	86.22%	83.41%	76.09%	75.80%	57.76%	53.29%	39.69%
Administrative Suspension	6.20%	6.14%	5.65%	6.51%	7.31%	8.74%	9.01%	7.29%	10.95%	14.08%	16.72%	5.43%	4.69%	4.98%
Offer Time Out	0.02%	0.14%	0.01%	0.16%	1.56%	0.12%	0.07%	0.05%	0.04%	0.18%	0.04%	0.22%	0.24%	0.12%
Refuse	3.83%	2.70%	2.24%	2.09%	2.57%	7.18%	7.72%	4.62%	4.02%	4.85%	3.25%	14.06%	11.40%	7.25%



# 24-Week Shipment Outlook

Together, we deliver.

Forecast by Status



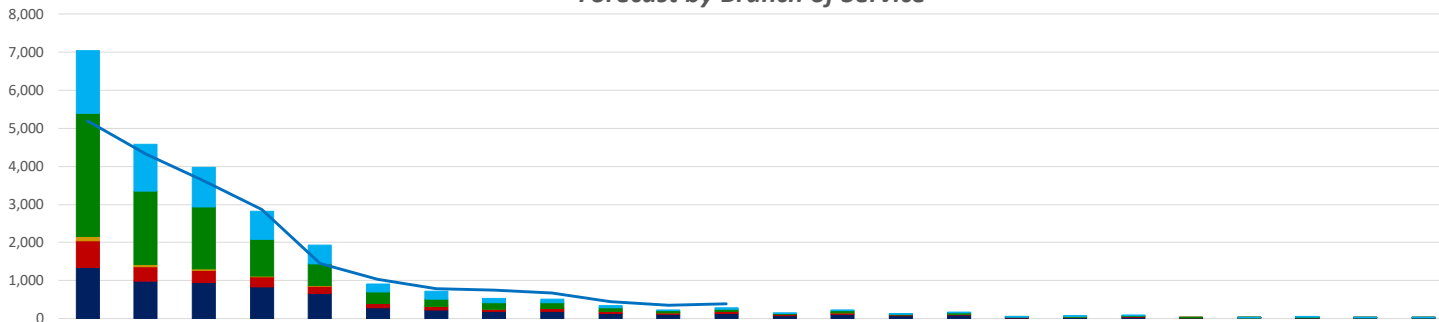
Desired Pickup Week	36	37	38	39	40	41	42	43	44	45	46	47	48	49	50	51	52	1	2	3	4	5	6	7	Total
In-Self-Counseling	268	184	209	164	146	63	74	52	48	25	17	22	24	29	14	32	5	10	7	3	2	8	4	2	1,412
In-Counseling	1,039	877	966	769	598	282	234	185	184	121	93	101	58	88	50	68	23	27	31	14	12	19	17	13	5,869
In-PPSO Queue	270	247	205	135	85	40	40	12	24	9	10	8	2	17	7	8	3	2	8	1	2	3	0	0	1,138
Offered (Not Accepted)	7	2	0	1	1	0	0	0	0	0	0	0	0	0	0	0	0	0	0	0	0	0	0	0	11
Awarded and Waiting for Presurvey	2,259	2,387	2,021	1,300	848	404	288	227	203	152	86	135	60	78	50	57	19	19	22	13	10	11	5	3	10,657
PreSurvey Done	3,171	875	555	431	242	113	74	53	51	27	26	15	12	19	8	9	1	7	4	3	2	1	1	3	5,703
In Post Award Status	5,430	3,262	2,576	1,731	1,090	517	362	280	254	179	112	150	72	97	58	66	20	26	26	16	12	12	6	6	16,360
Total Post Award Status for This Week Last Year	4,287	3,380	2,695	2,004	991	670	506	462	393	257	218	197													16,060
In-Post-Award Compared to Last Year	127%	97%	96%	86%	110%	77%	72%	61%	65%	70%	51%	76%													102%
Weekly Total	7,014	4,572	3,956	2,800	1,920	902	710	529	510	334	232	281	156	231	129	174	51	65	72	34	28	42	27	21	24,790
Total This Week Last Year	5,195	4,319	3,629	2,877	1,456	1,039	797	754	668	455	351	386													21,926
In-Process Compared to Last Year	135%	106%	109%	97%	132%	87%	89%	70%	76%	73%	66%	73%													113%



# 24-Week Services Outlook

Together, we deliver.

Forecast by Branch of Service



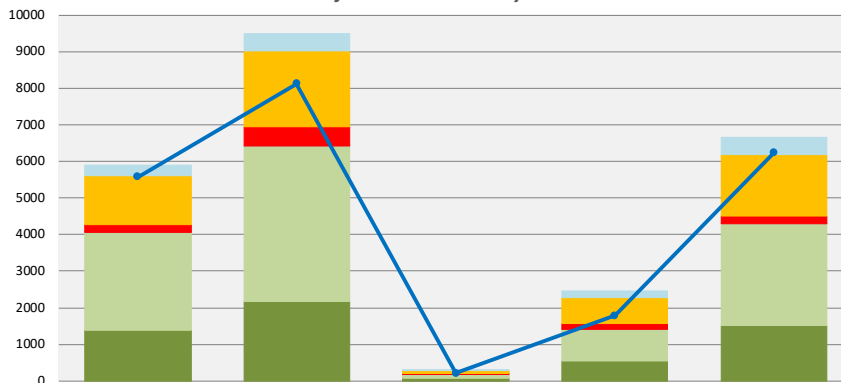
Desired Pickup Week	36	37	38	39	40	41	42	43	44	45	46	47	48	49	50	51	52	1	2	3	4	5	6	7	Total
Air Force	1,647	1,226	1,047	727	481	209	191	117	88	44	25	34	12	18	7	11	3	6	1	0	3	1	3	1	5,902
Army	3,225	1,925	1,609	964	582	294	194	155	160	93	57	60	29	53	22	39	8	11	10	3	2	14	5	2	9,516
Coast Guard	111	67	52	26	18	8	5	2	2	3	1	0	0	3	0	1	0	1	1	0	2	0	0	0	303
Marines	705	381	325	269	183	105	86	65	59	52	32	45	32	39	15	19	15	5	9	4	4	4	4	2	2,459
Navy	1,343	983	941	830	665	291	238	191	201	144	117	142	83	119	85	104	25	42	51	27	17	23	15	16	6,693
Weekly Total	7,031	4,582	3,974	2,816	1,929	907	714	530	510	336	232	281	156	232	129	174	51	65	72	34	28	42	27	21	24,873
Total This Week Last Year	5,195	4,319	3,629	2,877	1,456	1,039	797	754	668	455	351	386													21,926
In-Process Compared to Last Year	135%	106%	109%	97%	132%	87%	89%	70%	76%	73%	66%	73%													113%



# 24-Week Services Status

Together, we deliver.

Branch of Service Forecast by Status



Service	Air Force	Army	Coast Guard	Marines	Navy	TOTAL
In Self-Counseling	279	449	12	176	496	1,412
In Counseling	1,344	2,075	88	701	1,661	5,869
In PPSO Queue	204	534	26	160	214	1,138
% of Shipments in Preaward	31.03%	32.27%	42.14%	42.21%	35.55%	33.96%

Offered (Not Accepted)	5	4	0	1	1	11
Awarded and Waiting for Presurvey	2,658	4,238	108	881	2,772	10,657
PreSurvey Done	1,397	2,177	65	538	1,526	5,703
% of Shipments in Post Award	68.97%	67.73%	57.86%	57.79%	64.45%	66.04%

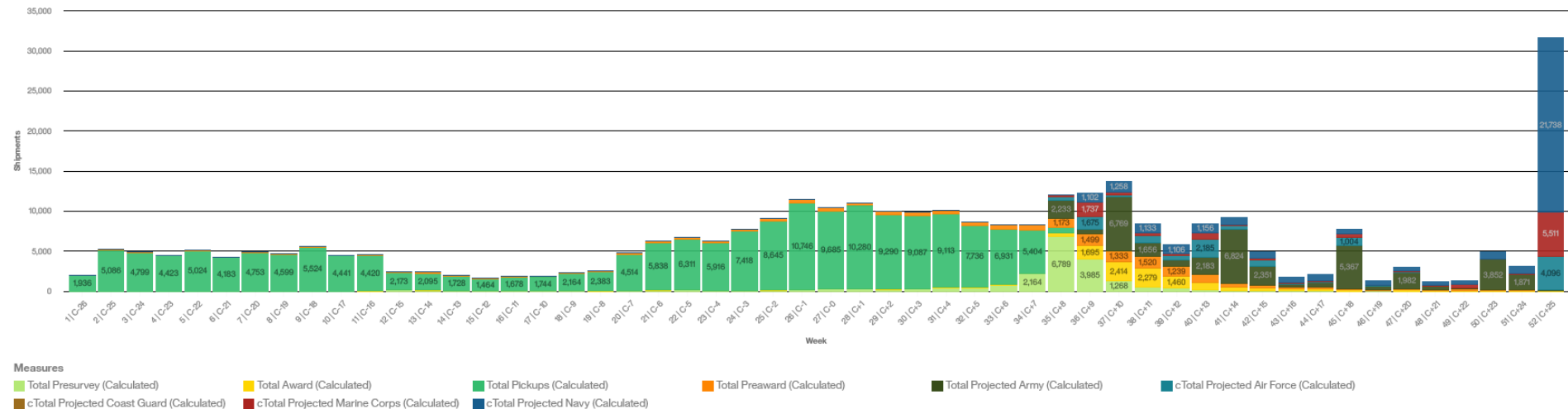
Total for All Status	5,887	9,477	299	2,457	6,670	24,790
Total for Service last Year	5,573	8,118	211	1,788	6,236	21,926
Percentage of Expected Pickups	106%	117%	142%	137%	107%	113%



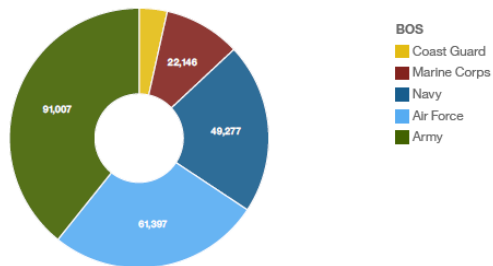
UNCLASSIFIED

# DP3 Peak Season Demand Model, 26 Aug 2020

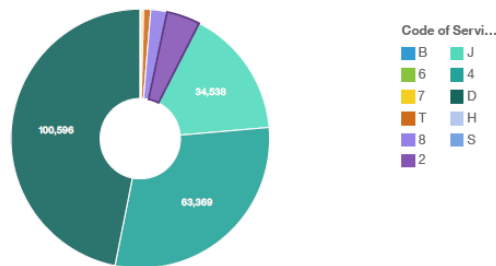
DP3 Demand Model for 2020



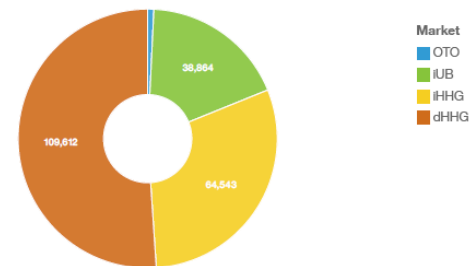
Branch of Service



Code of Service



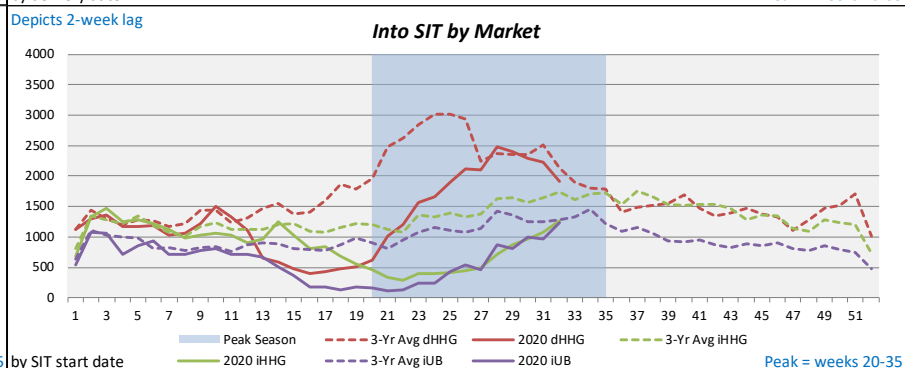
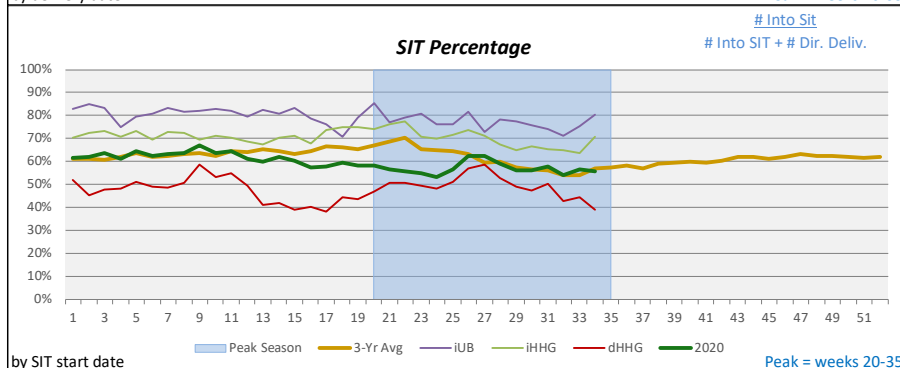
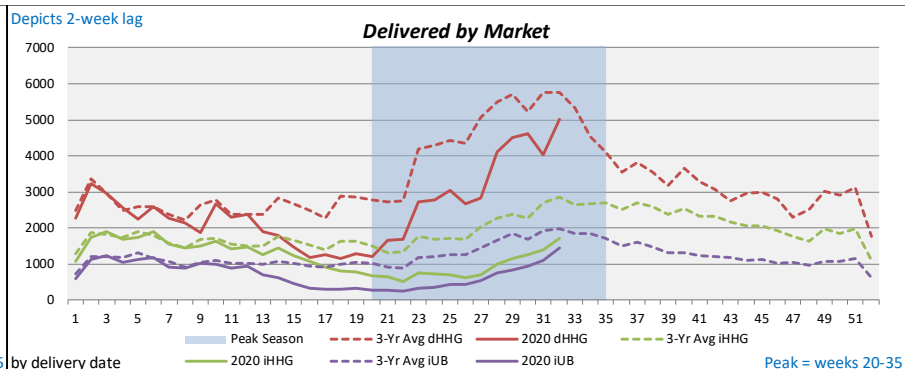
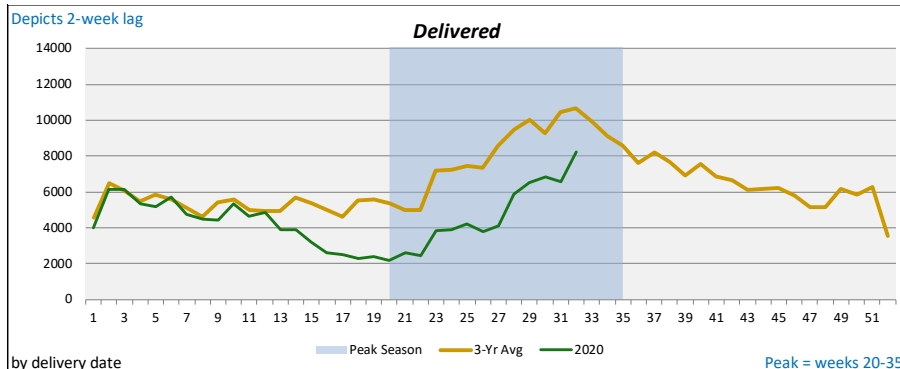
Market





# Delivered Shipments/SIT

Together, we deliver.



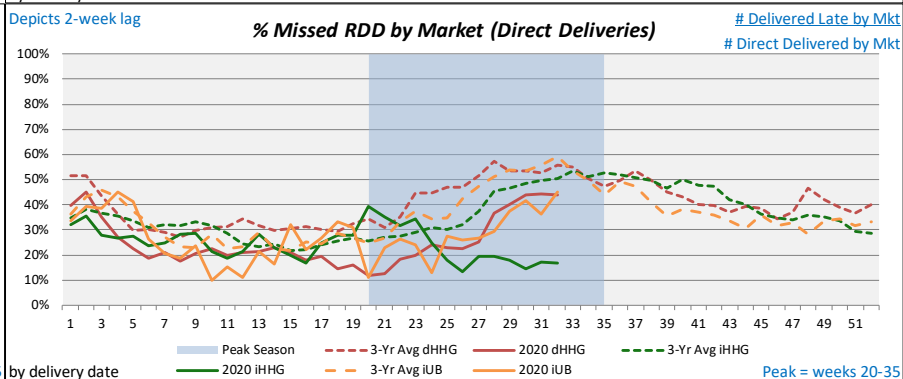
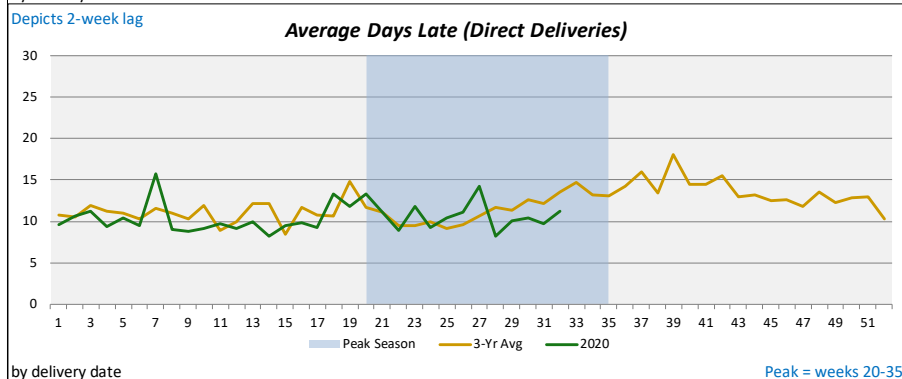
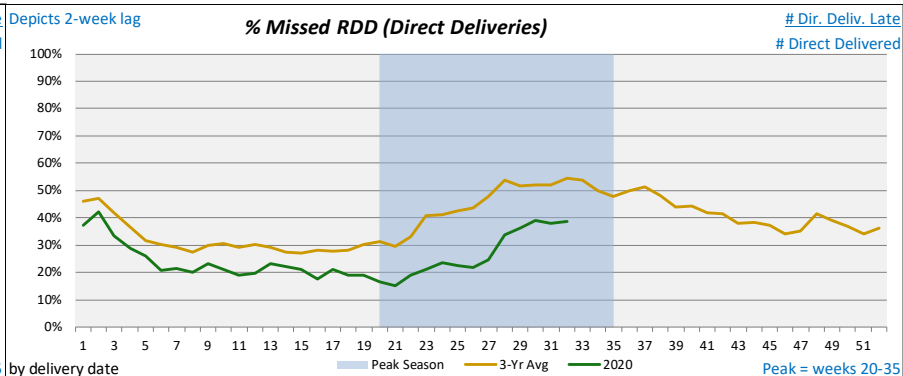
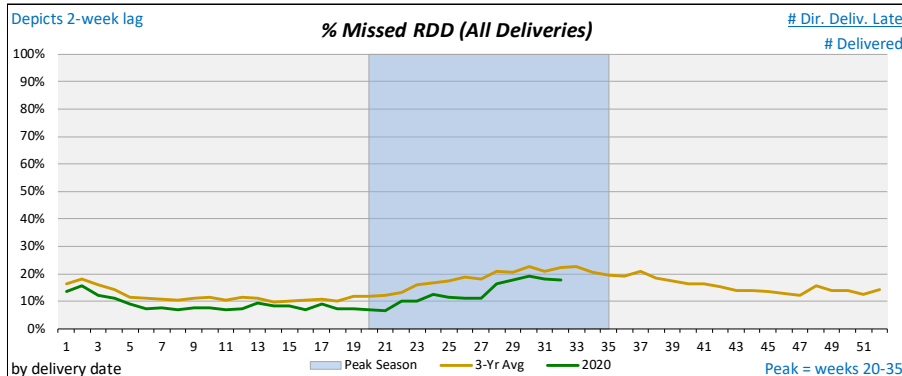
2020 Week 35





# Missed RDDs

Together, we deliver.



Note: Data reflects delivery information as entered into DPS by TSPs. When TSPs do not arrive shipments/update delivery data in DPS within 3 business days, there is an impact to the accuracy of delivery information which 2020 Week 35



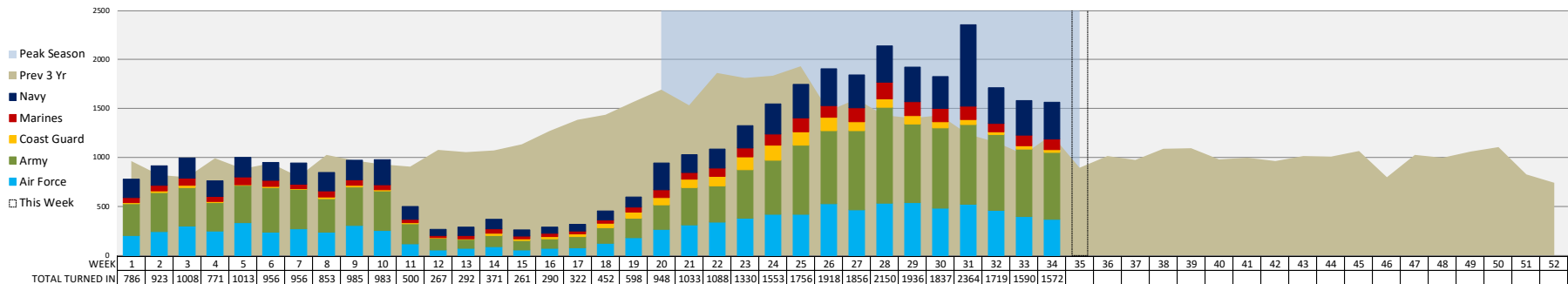
# POV Program Status – Weekly Volume

Together, we deliver.

Year to Date: **37677**  
 Last Year: **41035**

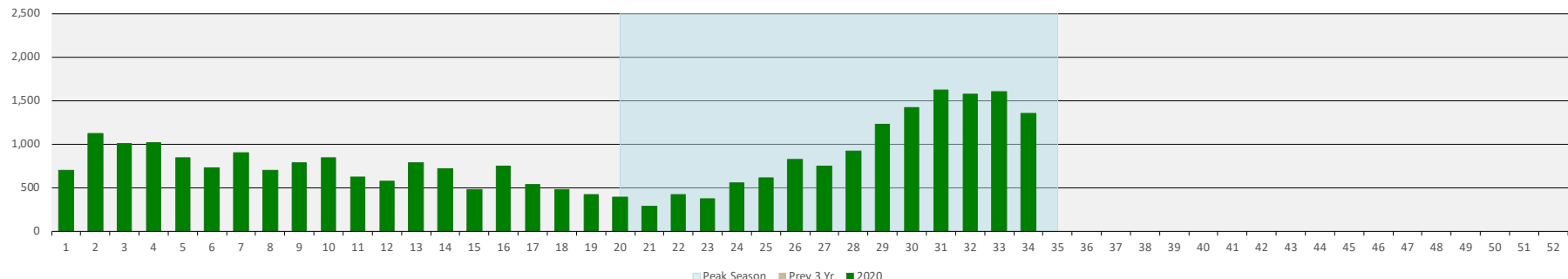
Peak Season to Date: **25090**  
 Peak Season Last Year: **22641**

OVPC Turn-In Volume



by turn-in date Peak = weeks 20-35

Arrived at DVPC



by arrival date  
 2020 Week 35

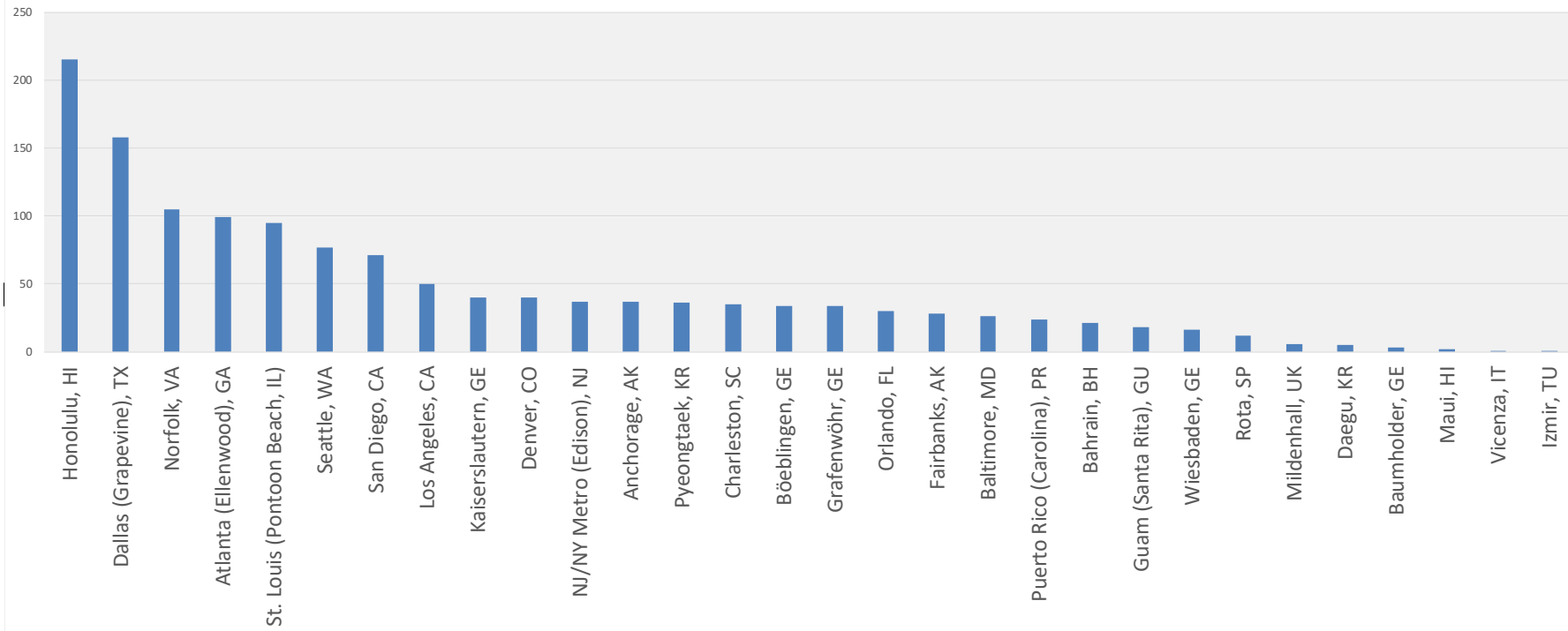
Peak = weeks 20-35



# POV Program Status – Arrived at DVPC

Together, we deliver.

Count of Arrivals at Destination Vehicle Processing Centers during Week 34



2020 Week 35



# Comments/Discussion

Together, we deliver.

## Services

- Air Force
- Army
- Coast Guard
- Marine Corps
- Navy

## Industry

## Other

- OSD
- JS
- Personnel Reps



# Administrative Notices

Together, we deliver.

- **The call-in number is 978-990-5178 Access Code 5579185**
- **Please call in before 8:30 Central Daylight Time**
  - Services and Associations please call in by 8:20 for attendance
- **There is no need to identify yourself when dialing in**
  - Especially if you are late or reconnecting
- **Put your Telephones on MUTE unless you are talking**
- **During the call: Please use \*6 to UNMUTE and \*6 to MUTE after speaking**
- **Please announce your name and organization when speaking**
- **Please DO NOT put your Telephone on HOLD**