



# INTERNATIONAL GEMOLOGICAL INSTITUTE

490199663



September 13, 2021  
IGI Report Number 490199663

NATURAL DIAMOND  
RECTANGULAR PRINCESS  
4.15 x 3.65 x 3.08 mm

Carat Weight 0.41 CARAT  
Color Grade H  
Clarity Grade I 1  
Pol - Sym GOOD  
Proportions VERY GOOD  
Fluorescence NONE  
Inscription(s) IGI 490199663

## DIAMOND REPORT

**ELECTRONIC COPY**

September 13, 2021

IGI Report Number

490199663

Description

NATURAL DIAMOND

Shape and Cutting Style

RECTANGULAR PRINCESS

Measurements

4.15 x 3.65 x 3.08 mm

## GRADING RESULTS

Carat Weight

0.41 CARAT

Color Grade

H

Clarity Grade

I 1

## ADDITIONAL GRADING INFORMATION

Polish - Symmetry

GOOD

Proportions

VERY GOOD

Fluorescence

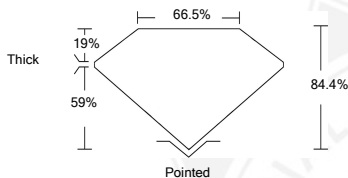
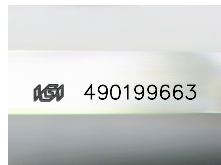
NONE

Identification Features

CLOUD, FEATHER

Inscription(s)

IGI 490199663



## COLOR

D - F	G - J	K - M	N - R	S - Z	FANCY
Colorless	Near Colorless	Slightly Tinted	Very Light Color	Light Color	

## CLARITY

IF	VS <sup>1-2</sup>	VS <sup>1-2</sup>	SI <sup>1-2</sup>	I <sup>1-2</sup>
Internally Flawless	Very Very Slightly Included	Very Slightly Included	Slightly Included	Included



September 13, 2021  
IGI Report Number 490199663

NATURAL DIAMOND  
RECTANGULAR PRINCESS  
4.15 x 3.65 x 3.08 mm

Carat Weight 0.41 CARAT  
Color Grade H  
Clarity Grade I 1  
Pol - Sym GOOD  
Proportions VERY GOOD  
Fluorescence NONE  
Inscription(s) IGI 490199663

© IGI 2020, International Gemological Institute

FD - 10 20



THIS DOCUMENT WAS PRODUCED WITH THE FOLLOWING SECURITY MEASURES: SPECIAL DOCUMENT PAPER, INK SCREENS, WATERMARK BACKGROUND DESIGN, HOLOGRAM AND OTHER SECURITY FEATURES NOT LISTED AND DO EXCEED DOCUMENT SECURITY INDUSTRY GUIDELINES.