



INTERNATIONAL GEMOLOGICAL INSTITUTE

496130475



October 12, 2021

IGI Report Number 496130475

NATURAL DIAMOND

HEART BRILLIANT

4.57 x 5.03 x 2.19 mm

Carat Weight 0.30 CARAT

Color Grade E

Clarity Grade SI 2

Pol - Sym FAIR

Proportions FAIR

Fluorescence NONE

Inscription(s) IGI 496130475

DIAMOND REPORT

ELECTRONIC COPY

October 12, 2021

IGI Report Number

496130475

Description

NATURAL DIAMOND

Shape and Cutting Style

HEART BRILLIANT

Measurements

4.57 x 5.03 x 2.19 mm

GRADING RESULTS

Carat Weight

0.30 CARAT

Color Grade

E

Clarity Grade

SI 2

ADDITIONAL GRADING INFORMATION

Polish - Symmetry

FAIR

Proportions

FAIR

Fluorescence

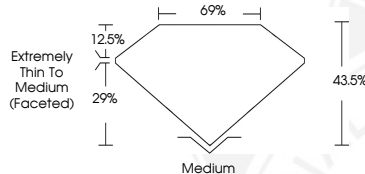
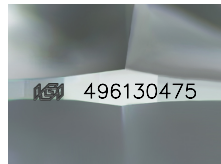
NONE

Identification Features

FEATHER, CLOUD

Inscription(s)

IGI 496130475



COLOR

D - F	G - J	K - M	N - R	S - Z	FANCY
Colorless	Near Colorless	Slightly Tinted	Very Light Color	Light Color	

CLARITY

IF	VS ¹⁻²	VS ¹⁻²	SI ¹⁻²	I ¹⁻²
Internally Flawless	Very Very Slightly Included	Very Slightly Included	Slightly Included	Included



October 12, 2021

IGI Report Number 496130475

NATURAL DIAMOND

HEART BRILLIANT

4.57 x 5.03 x 2.19 mm

Carat Weight 0.30 CARAT

Color Grade E

Clarity Grade SI 2

Pol - Sym FAIR

Proportions FAIR

Fluorescence NONE

Inscription(s) IGI 496130475

© IGI 2020, International Gemological Institute

FD - 10 20



THIS DOCUMENT WAS PRODUCED WITH THE FOLLOWING SECURITY MEASURES: SPECIAL DOCUMENT PAPER, INK SCREENS, WATERMARK BACKGROUND DESIGNS, HOLOGRAM AND OTHER SECURITY FEATURES NOT LISTED AND DO EXCEED DOCUMENT SECURITY INDUSTRY GUIDELINES.