

Features include:

- Bedrooms - 4
- Bathrooms (full) - 2
- Bathrooms (half) - 1
- Square Feet - 2,808 sq. ft.
- Lot Size - 9,148 sq. ft.

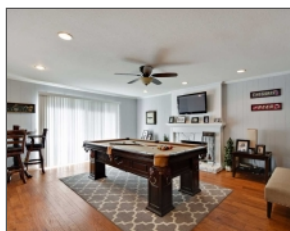


1090 Oakcrest Ave Brea, CA 92821

\$895,000



THIS IS IT!!! WELCOME HOME! TO THE PERFECT FAMILY & ENTERTAINING HOME THAT YOU HAVE BEEN SEARCHING FOR!! LOCATED IN THE HIGHLY SOUGHT AFTER COMMUNITY OF NORTH HILLS, IN THE TOP RATED BREA-OLINDA SCHOOL DISTRICT. COME AND EMBRACE THIS WELL APPOINTED HOME, YOU WILL BE GREETED BY A GRACIOUS DOUBLE DOOR ENTRY WHICH LEADS TO LOVELY HICKORY HAND SCRAPED FLOORS, FOLLOWED BY A SUNKEN BRIGHT AND AIRY LIVING ROOM, ELEVATED DINING AREA, SPACIOUS UPSTAIRS BEDROOMS, REMODELED KITCHEN AND BATHROOMS, PERFECTLY SITUATED FAMILY ROOM WITH FIREPLACE, BUILT IN SHELVING AND SLIDING GLASS DOOR WHICH ALLOWS THE EASE OF INDOOR/OUTDOOR LIVING. THE BACKYARD IS THE IDEAL TRANQUIL SETTING FOR RELAXING POOLSIDE AND ENTERTAINING. SITUATED ON A SPRAWLING 9,140 SQFT LOT, PERFECTLY LANDSCAPED WITH MULTIPLE MATURE FRUIT TREES (LEMON, TANGERINES, POMEGRANATES AND APRICOT) SPARKLING POOL, INVITING PERGOLA, FIRE PIT AND OUTDOOR SPEAKERS ALL ADORNED ON A NEW PEBBLE STONE SURFACE. HURRY, HOME FOR THE HOLIDAYS!



Shontel S. Hobson
REALTOR®
CA BRE 01474687
Realty One Group
2300 E Katella Avenue 100, Anaheim, CA 92806
Cell: 310-351-5380
hobsonrealtor@aol.com
<http://spsid.net/245279>

