



WM646

B&C Spider /men

PST



Composition

B&C, NOW sourcing 100% More Sustainable fibres for all cotton-based products

80% ring-spun cotton, combed (investing in Better Cotton*) / 20% Recycled Polyester - RCS certified

**By buying this product from B&C you're supporting responsible cotton production through Better Cotton.*

Size

S, M, L, XL, 2XL, 3XL

Packing

5 pcs/pack & 20 pcs/carton

Weight

280 g/m²

Details

B&C, NOW sourcing 100% More Sustainable fibres for all cotton-based products

With our collection of sweatshirts and hoodies you'll easily add an extra stylish layer to any outfit. The B&C Spider /men is a jacket made of PST sweatshirt fabric with a high standing collar in 2x2 rib, metal zip down the front, lateral pockets following the body panels for a neat look and body fit seams for comfort.

Featuring B&C's Perfect Sweat Technology, the B&C Spider /men sweatshirt is not just a high-end classic, it offers enhanced decoration outcomes thanks to its unique fabric construction that offers the best print results. On top, it has a premium, soft handfeel and quality matt appearance, combined with durability and great comfort.

Grab this full zipped sweatshirt whenever you need a little extra warmth and a touch of style.

With B&C PST unique fabric construction you can let your inspiration free, confident of great decoration results.

- Perfect Sweat Technology - High quality fabric for perfect printability & comfort & durability
- Full length metal zip
- High collar
- Collar & cuffs & bottom hem in 2x2 rib with elastane
- Seams finished with flatlock topstitching
- 2 lateral pockets
- Lateral panels

Colors



Sustainability



Care instructions

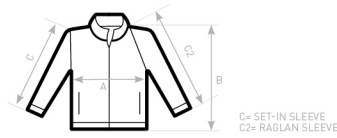


All our products are tested and approved using all main print techniques.

B&C USES ONLY RESPONSIBLY SOURCED FIBRES FOR ALL T-SHIRTS, POLO SHIRTS AND SWEATSHIRTS.

View on the website





| B&C SPIDER /M. WM 646 | XS | S | M | L | XL | 2XL | 3XL |
|-----------------------|----|------|------|------|------|------|------|
| A HALF CHEST | - | 50,5 | 53,5 | 56,5 | 59,5 | 62,5 | 65,5 |
| B BODY LENGTH | - | 68 | 70 | 72 | 74 | 76 | 78 |
| C SLEEVE LENGTH | - | 65 | 66 | 67 | 68 | 69 | 70 |

**B&C USES ONLY RESPONSIBLY
SOURCED FIBRES FOR ALL T-
SHIRTS, POLO SHIRTS AND
SWEATSHIRTS.**

View on the website

