

BROOK TAVERNER
corporate tailoring

OPHELIA

Slim Fit Trouser

Side pockets
mock hip pockets.

Sizes:

4 - 24 waist in leg lengths
S-27", R-29", L-31", XL-33"
& 36" unfinished

Codes & Colours:

2276A Navy Pin Dot
2276B Navy
2276C Charcoal Pin Dot
2276D Black

64% Polyester, 34% Viscose, 2% Elastane
330gm fabric, Teflon finish
Machine washable tailoring
Martindale Test >100,000 rubs



Teflon™ is a registered trademark of
The Chemours Company FC, LLC
used under license by Brook Taverner Ltd.



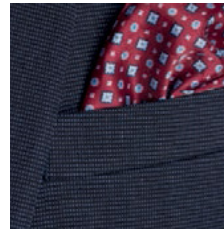
SLIM FIT
PROFILE



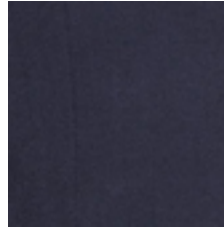
16cm



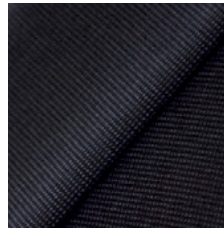
Half hem width at
size 12 = 16cm



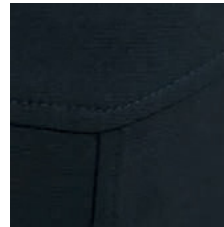
A. Navy Pin Dot



B. Navy



C. Charcoal Pin Dot



D. Black



ECLIPSE
collection