

# B&C Orchid /women - TW S52



RELAXED FIT

## Women's flattering short-sleeved T-shirt in Single Jersey

- Superior quality 110 g/m<sup>2</sup> Single Jersey with very soft hand feeling
- Short batwing sleeved T-shirt
- Folded raw edge sleeves fixed with topstitch
- Wide crew neck in front
- Deep drop back
- Collar with binding in self fabric
- Rounded bottom with slight step back hem
- Bottom binding in self fabric with gathering effect
- Side seams

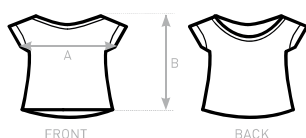


- 100% pre-shrunk ring-spun cotton
- Single Jersey
- 110 g/m<sup>2</sup>
- XS/S - M/L - XL/2XL
- 5 pcs/pack & 25 pcs/carton



DUO  
CONCEPT

with B&C Flamingo /men



## SIZES [CM]

B&C ORCHID /WOMEN TW S52		XS-S	M-L	XL-2XL
A	BODY WIDTH SLEEVE EDGE TO SLEEVE EDGE	64	67	70
B	BODY LENGTH	64	67	70



OEKO-TEX®  
CONFIDENCE IN TEXTILES  
STANDARD 100  
1501003 Certexbel  
Tested for harmful substances,  
www.oeko-tex.com/standard100