

# B&C DNM Editing /women - TW D73



## MEDIUM FIT

The infinite short-sleeved T-shirt in Single Jersey in indigo dye with DENIM effect

- Short-sleeved T-shirt
- Crew neck 1x1 ribbed collar
- Set-in sleeves
- Folded cuffs with single needle topstitch
- Shoulder-to-shoulder necktape, finished with double chainstitch for more elasticity
- Bottom with blind stitching



100% pre-shrunk ring-spun cotton

Single Jersey

185 g /m<sup>2</sup>

XS - S - M - L - XL

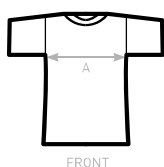
5 pcs/pack & 25 pcs/carton



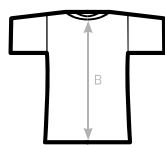
The characteristics of the treatments make each garment original and unique. Variations should be considered as a sign of quality.



**DUO CONCEPT**  
with B&C DNM Editing /men



FRONT



BACK

## SIZES [CM]

B&C DNM EDITING /W. TW D73	XS	S	M	L	XL	2XL
A HALF CHEST	38	41	44	47	50	-
B CENTER BACK LENGTH	57,5	59,5	61,5	63,5	65,5	-



OEKO-TEX®  
CONFIDENCE IN TEXTILES  
STANDARD 100  
1501003 Certexbel  
Tested for harmful substances.  
www.oeko-tex.com/standard100