

B&C CREW BOMBER /WOMEN - JW 962

MIDDLE WEIGHT JACKET



Middle weight bomber jacket with comfortable padding and concealed hood

POLYESTER PONGEE

Outer layer: 100% polyester pongee

Inner layer: 100% polyester quilted taffeta

XS - S - M - L - XL - 2XL

1 pc/pack & 10 pcs/carton



Waterproof



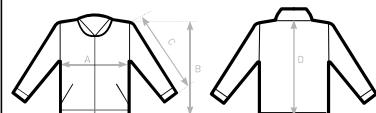
Windproof

- 1- Contemporary cotton feel heavy rib on cuffs and bottom hem
 - 2- Standing collar and full length internal stormflap ensure wind protection
 - 3- Forward shoulder seams for better comfort and water protection
 - 4- Tone-on-tone, high quality SBS zippers
 - 5- 2 zipped hand pockets with overlap
 - 6- 1 inner wallet pocket with closing tabs
- Easy access for decoration thanks to the zip opening at the bottom of the lining
- Fabric tested for the following decoration techniques - screen printing, heat transfer, and embroidery



DUO
CONCEPT

with B&C Crew Bomber /men



SIZES [CM]

B&C CREW BOMBER /WOMEN JW 962

A HALF CHEST
B BODY LENGTH FROM NECK POINT
C SLEEVE LENGTH
D CENTER BACK LENGTH

	XS	S	M	L	XL	2XL
A	48	51	54	57	60	63
B	60	62	64	66	68	70
C	62	63,5	65	66,5	68	69,5
D	58	60	62	64	66	68



**OUTER
WEAR
/UNIT**