

B&C SUPERHOOD /WOMEN - JW 941

B&C
COLLECTION

HEAVY WEIGHT JACKET / DOWN JACKET



Heavyweight puffer bomber with fashionable contrasted inner lining

POLYESTER 300T TAFFETA

Outer layer: 100% polyester 300T taffeta

Inner layer: 100% polyester padded taffeta with feather touch padding

XS - S - M - L - XL - 2XL

1 pc/pack & 10 pcs/carton



WHITE WITH
WARM GREY LINING



BLACK WITH
COBALT BLUE LINING



NAVY WITH
NEON GREEN LINING



RED WITH
BLACK LINING



ROYAL BLUE WITH
NEON ORANGE LINING



DARK GREY WITH
NEON ORANGE LINING



Windproof



Water-repellent



Showerproof



Feminine cut



Thermo-insulated

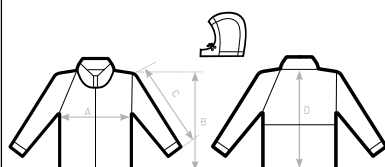
- 1- Adjustable, removable padded hood
- 2- Left chest and back (shoulder to middle back) panels with hidden zips for easy decoration access
- 3- Standing collar, full length internal stormflap and cotton feel 2x2 rib on cuffs and hem for wind protection
- 4- Bomber style, retail cut for a contemporary image
- 5- 2 zipped hand pockets

Fabric tested for the following decoration techniques: screen printing, heat transfer, sublimation (for white only) and embroidery



DUO
CONCEPT

with B&C Superhood /m.



SIZES [CM]

B&C SUPERHOOD /WOMEN JW 941

A HALF CHEST
B BODY LENGTH FROM NECK POINT
C SLEEVE LENGTH
D CENTER BACK LENGTH

	XS	S	M	L	XL	2XL	3XL
A	49	52	55	58	61	64	-
B	61	63	65	67	69	71	-
C	65,5	67	68,5	70	71,5	73	-
D	59	61	63	65	67	69	-

B&C
COLLECTION

**OUTER
WEAR
/UNIT**

JACKET | WOMEN