



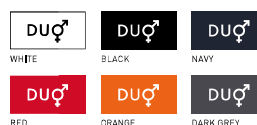


LIGHT WEIGHT JACKET
/ WITH LINING



Modern lined windbreaker

-  100% 210T polyester taffeta with acrylic coating (AC)
-  Body lining: 100% polyester tricot
Sleeves lining: 100% polyester taffeta
-  S - M - L - XL - 2XL - 3XL
-  5 pcs/pack & 30 pcs/carton



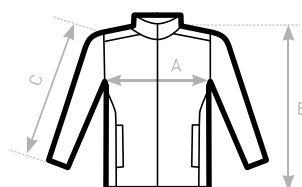
-  Windproof
-  Water-repellent
-  Showerproof
-  Thermoinsulated

- 1- Ergonomic hood concealed in collar with closing tabs
- 2- Self fabric lining inside the collar
- 3- Forward seams on shoulders for better protection
- 4- Front zip opening with zip pull
- 5- Adjustable bottom hem with drawcord
- 6- 2 front pockets with overlap and 1 inner wallet pocket



DUO
CONCEPT

with B&C ID.601 /w.



SIZES [CM]

B&C ID. 601 JU 160	XS	S	M	L	XL	2XL	3XL
A HALF CHEST	-	54	57	60	63	66	69
B BODY LENGTH AT CB	-	70	72	74	76	78	80
C SLEEVE LENGTH	-	63,5	65	66,5	68	69,5	71

B&C
COLLECTION
**OUTER
WEAR
/UNIT**