

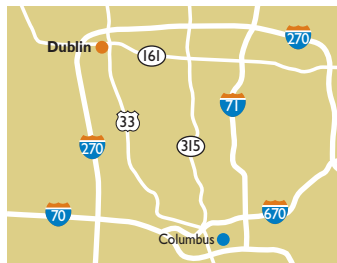
TRADER JOE'S CENTER

DUBLIN, OHIO



SIZE

75,859 square feet



LOCATION

6301-6393 Saw Mill Road | Dublin, Ohio 43016

PROPERTY HIGHLIGHTS

- Anchored by Trader Joe's, a leading grocery store in the fresh format category
- Located in Dublin, a growing suburb of Columbus, with a population exceeding 80,202 in a three-mile radius with an average household income greater than \$90,000
- The center is located at the intersection of Sawmill Road and Dublin Granville, the primary intersection of two major retail corridors that is located just off of I-270

LEASING CONTACT

Scott Faloni

Phillips Edison & Company
11501 Northlake Drive
Cincinnati, OH 45249

Mobile (410) 693-3248

sfaloni@phillipsedison.com

MORE INFO

www.phillipsedison.com



PHILLIPS EDISON & COMPANY

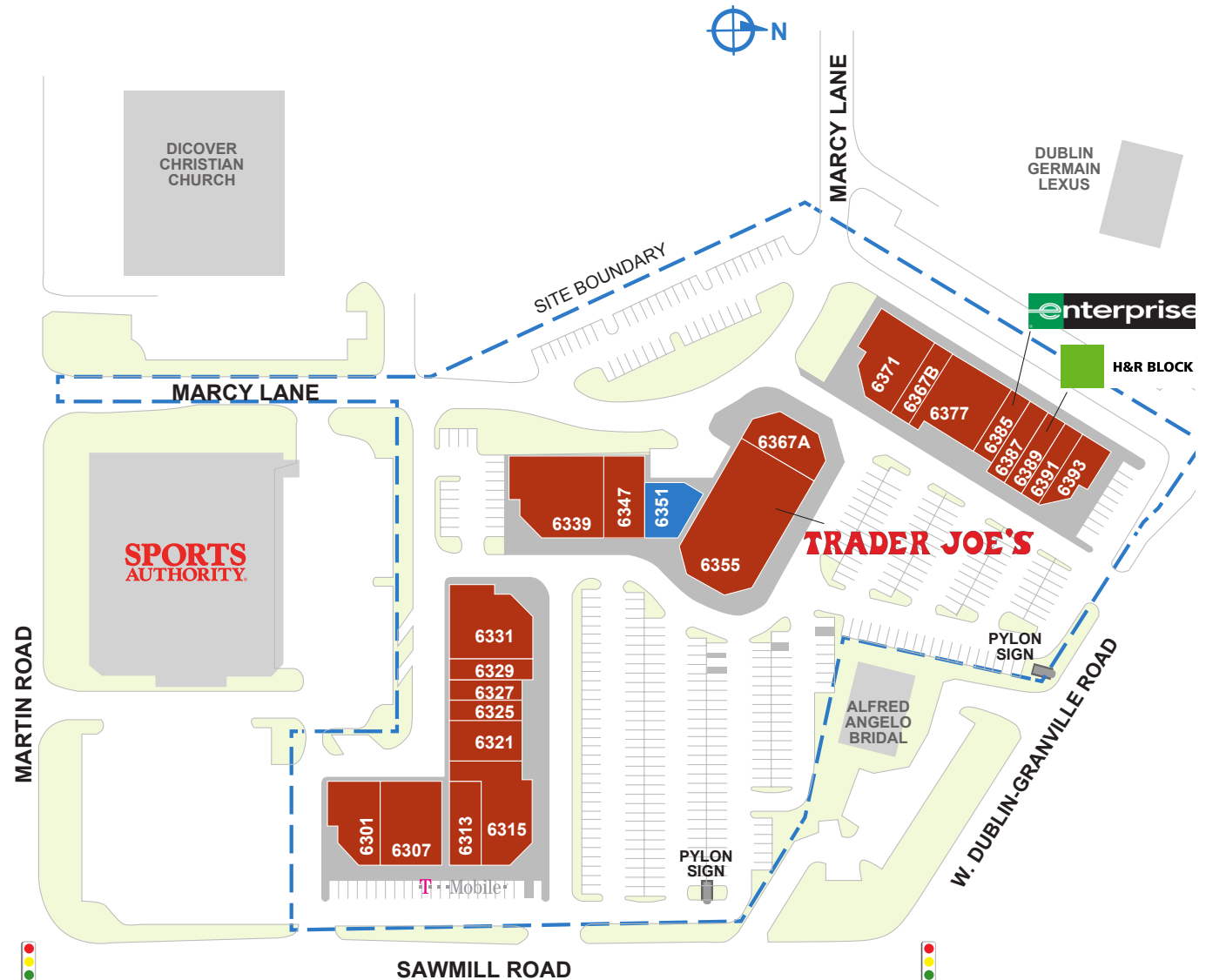
TRADER JOES CENTER

6301-6393 SAW MILL ROAD | DUBLIN, OH 43016

SPACE	TENANT	SQ. FT.
6301	Comfort Dental	3,400
6307	Mattress Mart	4,800
6313	T-Mobile	2,560
6315	Calico Corners	5,240
6321	Rettig Music	2,800
6325	Yummy Bakery	1,400
6327	Bronze FX	1,400
6329	Shear Studios	1,600
6331	Nissin Travel	5,380
6339	Wendy's Bridal Shoppes	6,705
6347	1 Stop Bead Shop	3,200
6351	Leased AVAILABLE	2,400
6355	Trader Joe's	12,788
6367A	Pai Yoga and Fitness	2,876
6367B	Pai Yoga and Fitness	1,600
6371	Opening Night	3,710
6377	Shi Chi Japanese Steakhouse	5,800
6385	Enterprise Rent A Car	1,400
6387	Romanoff's Classic Tuxedo	1,600
6389	H&R Block	1,600
6391	Edible Arrangements	1,600
6393	Vincenzo's	2,000
TOTAL SQ. FT.		75,859

SITE LEGEND

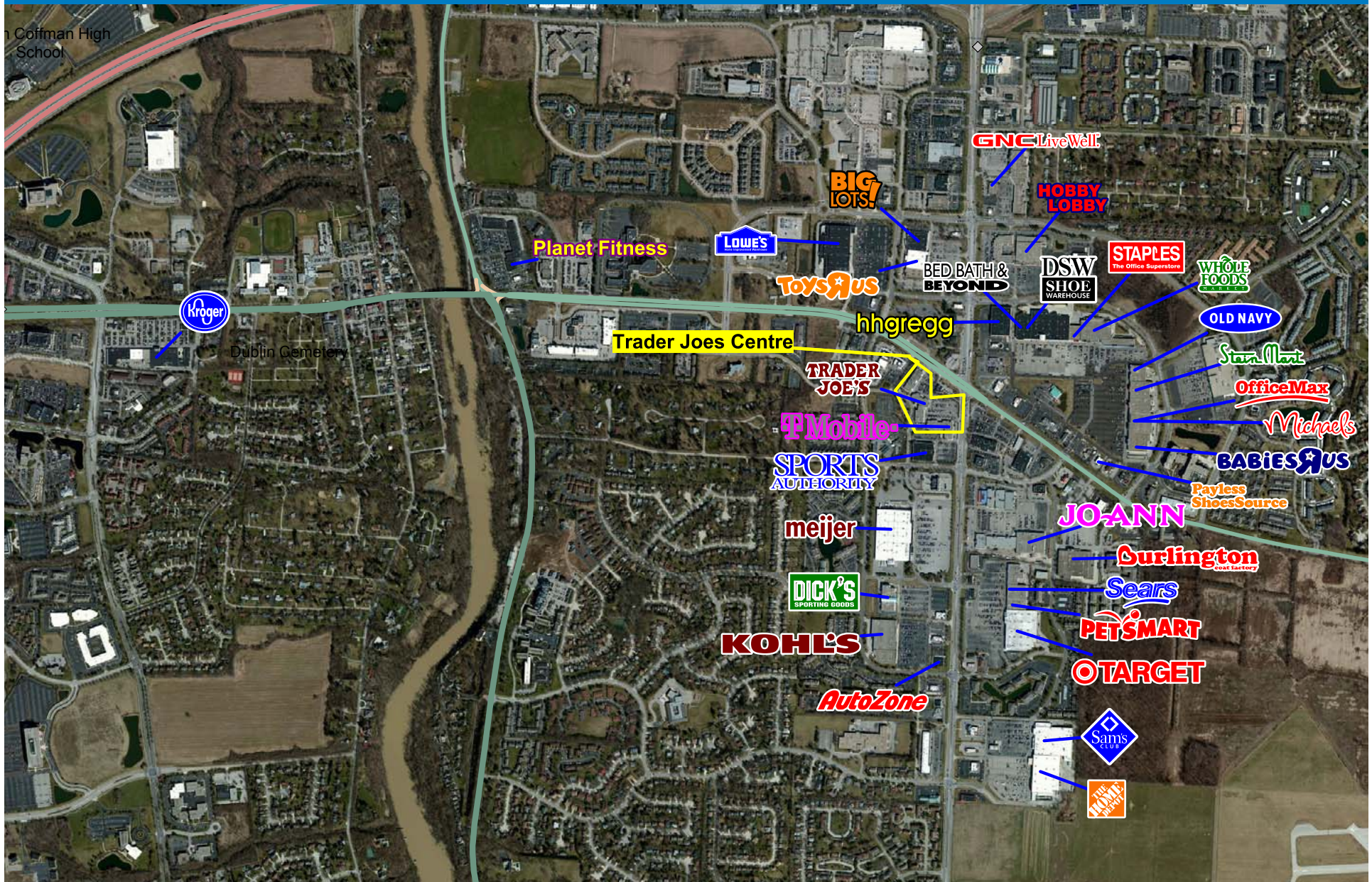
- Available
- Occupied
- Leased (not occupied)
- Owned by Others



PHILLIPS EDISON & COMPANY

TRADER JOE'S CENTER

6301-6393 Saw Mill Road | Dublin, Ohio 43016



Logos are for identification purposes only and may be trademarks of their respective companies.



This map was produced using data from private and government sources deemed to be reliable. The information herein is provided without representation or warranty. 2009 Sites USA Inc., Chandler, AZ (480) 491-1112. All Rights Reserved.



PHILLIPS EDISON & COMPANY

Demographic Summary Report

1990 - 2000 Census, 2014 Estimates & 2019 Projections
Calculated using TAS Retrieval Retrieval



Apr 8, 2015

Latitude: 40.095794 Longitude: -83.092236

Trader Joes Centre		1.00 Mile Radius	3.00 Mile Radius	5.00 Mile Radius	10.00 Mile Radius
Population	Q4 2014 Estimated Population	11,140	88,561	208,406	700,341
	2019 Projected Population	12,014	94,862	223,755	745,739
	2010 Census Population	10,291	83,659	195,612	661,612
	2000 Census Population	9,434	80,387	177,387	589,498
	1990 Census Population	8,220	67,559	142,628	513,034
	Historical Annual Growth 1990 to 2000	1.39%	1.75%	2.20%	1.40%
	Historical Annual Growth 2000 to 2010	0.87%	0.40%	0.98%	1.16%
	Estimated Annual Growth 2010 to 2014	1.68%	1.21%	1.34%	1.20%
	Projected Annual Growth 2014 to 2019	1.52%	1.38%	1.43%	1.26%
	Median Age	33.3	36.2	38.1	34.5
Households	Q4 2014 Estimated Households	5,204	37,727	87,655	287,336
	2019 Projected Households	5,652	40,437	94,246	306,587
	2010 Census Households	4,760	35,616	82,041	270,713
	2000 Census Households	4,425	33,617	73,511	244,614
	1990 Census Households	3,724	27,209	57,758	205,710
	Historical Annual Growth 1990 to 2000	1.74%	2.14%	2.44%	1.75%
	Historical Annual Growth 2000 to 2014	0.73%	0.58%	1.10%	1.02%
	Estimated Annual Growth 2000 to 2014	1.90%	1.22%	1.40%	1.26%
	Projected Annual Growth 2014 to 2019	1.67%	1.40%	1.46%	1.31%
	Population per Household	2.14	2.34	2.36	2.38
Population by Race	White	71.7%	78.2%	81.5%	73.6%
	Black or African American	5.4%	4.2%	3.5%	13.3%
	Asian & Pacific Islander	12.7%	10.0%	9.2%	6.0%
	Other Races	3.0%	2.6%	2.3%	2.7%
	Hispanic Population	7.2%	5.0%	3.5%	4.4%
Income	Average Household Income	\$68,862	\$91,165	\$101,172	\$81,608
	Median Household Income	\$58,377	\$70,388	\$77,369	\$60,406
	Per Capita Income	\$32,169	\$38,942	\$42,766	\$33,715
Education (Age 25+)	Elementary	1.5%	1.6%	1.2%	2.2%
	Some High School	3.2%	2.7%	2.1%	4.7%
	High School Graduate	15.7%	14.8%	13.1%	19.3%
	Some College	19.5%	17.9%	16.7%	18.7%
	Associates Degree Only	8.3%	6.8%	6.3%	6.6%
	Bachelors Degree Only	35.3%	35.7%	37.0%	30.5%
	Graduate Degree	16.6%	20.6%	23.5%	18.0%
Business	Number of Businesses	570	3,142	6,920	19,380
	Total Number of Employees	13,442	71,810	143,392	452,323
	Employees per Business	23.57	22.86	20.72	23.34
	Residential Population per Business	19.53	28.19	30.12	36.14

This report was produced using data from private and government sources deemed to be reliable and is herein provided without representation or warranty.