

# MARKETPLACE SHOPPING CENTER

NEWTON, NORTH CAROLINA



## SIZE

126,435 square feet

## MAJOR TENANTS

Bi-Lo Supermarket  
Big Lots  
Burke's Outlet  
Family Dollar



## LOCATION

2725 Northwest Boulevard | Newton, North Carolina 28658

## PROPERTY HIGHLIGHTS

- Located at the intersection of NW Blvd and Conover Blvd West (US 321), with easy access to I-40
- Ranked second for best business environment of the state's 50 largest communities by NC Business Magazine
- Extension of US 321 to the west of the city has shortened drive time to Charlotte, breathing new life into the rural southern portion of the county through rapid commercial and industrial growth along this important transportation corridor
- Population of over 44,500 within five miles with average household income of \$53,300
- Traffic counts in excess of 28,700 VPD

## LEASING CONTACT

**Mark Porter, DMP**

Phillips Edison & Company  
250 North Trade Street  
Suite 300, Box #2  
Matthews, NC 281055

Office (513) 746-2621

Mobile (803) 338-6004

[mporter@phillipsedison.com](mailto:mporter@phillipsedison.com)

## MORE INFO

[www.phillipsedison.com](http://www.phillipsedison.com)



PHILLIPS EDISON & COMPANY

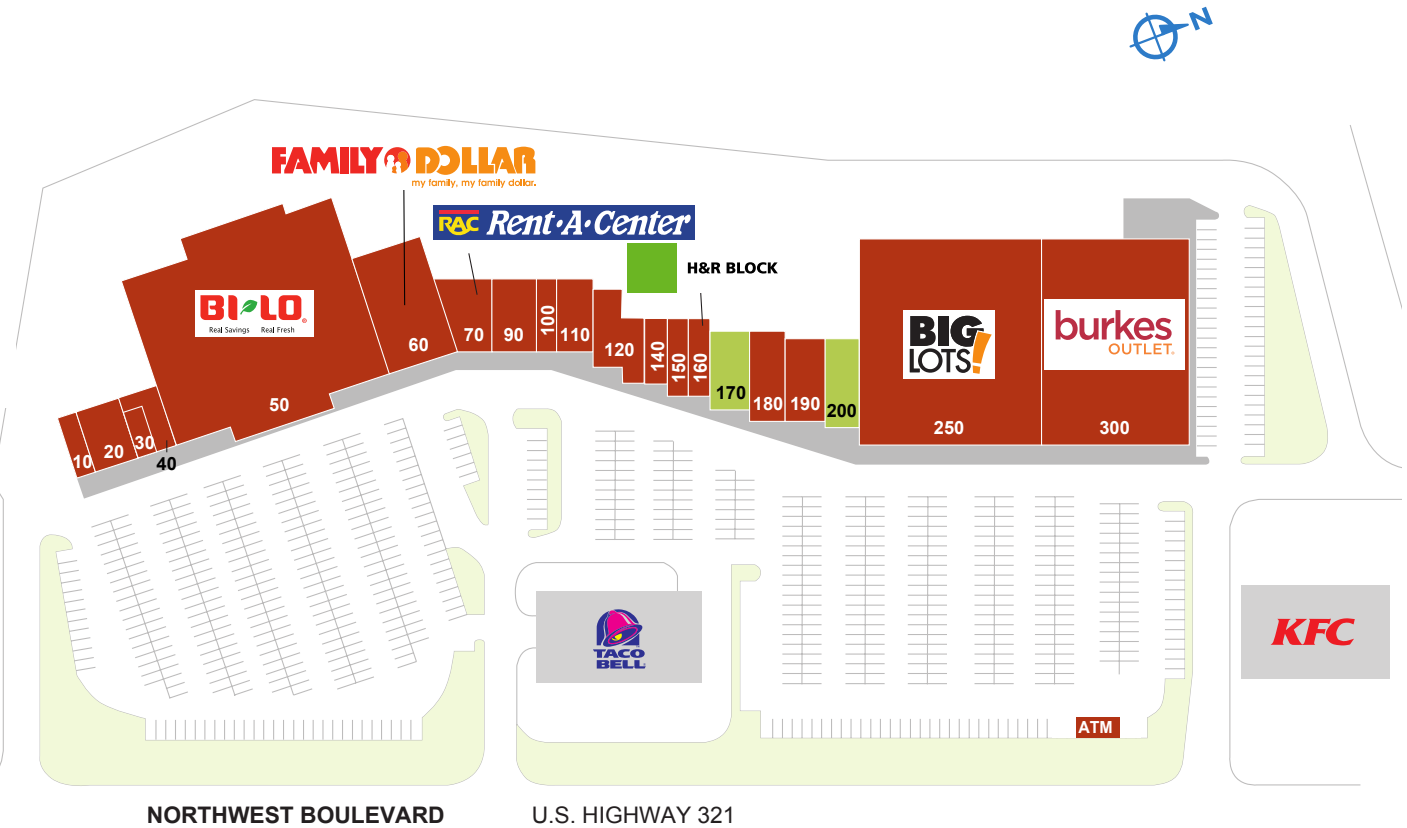
# MARKETPLACE CENTER

2725 NORTHWEST BLVD | NEWTON, NC 28658

SPACE	TENANT	SQ. FT.
10	First Nail	1,440
20	China Bistro	2,160
30	Piedmont Associates Insurance	600
40	So Chic Salon	1,800
50	BI-LO	33,000
60	Family Dollar	7,840
70	Rent Way	3,600
90	Pack and Ship 2	1,220
100	Liberty Tax Service	1,200
110	American General Finance	2,400
120	Tosaka II Authentic Japanese	2,900
140	Magic 8 Designs	1,200
150	Papa John's Pizza	1,400
160	H&R Block	1,400
170	<b>AVAILABLE</b>	2,450
180	Mexico Tipico	2,800
190	Manpower Temp Services	2,625
200	<b>AVAILABLE</b>	2,400
250	Big Lots	35,000
300	Burkes Outlet	19,000
O-1	Bank of America	
<b>TOTAL SQ. FT.</b>		<b>126,435</b>

## SITE LEGEND

- Available
- Occupied
- Leased (not occupied)
- Owned by Others



PHILLIPS EDISON & COMPANY



# MARKETPLACE SHOPPING CENTER

2725 Northwest Boulevard | Newton, North Carolina 28658

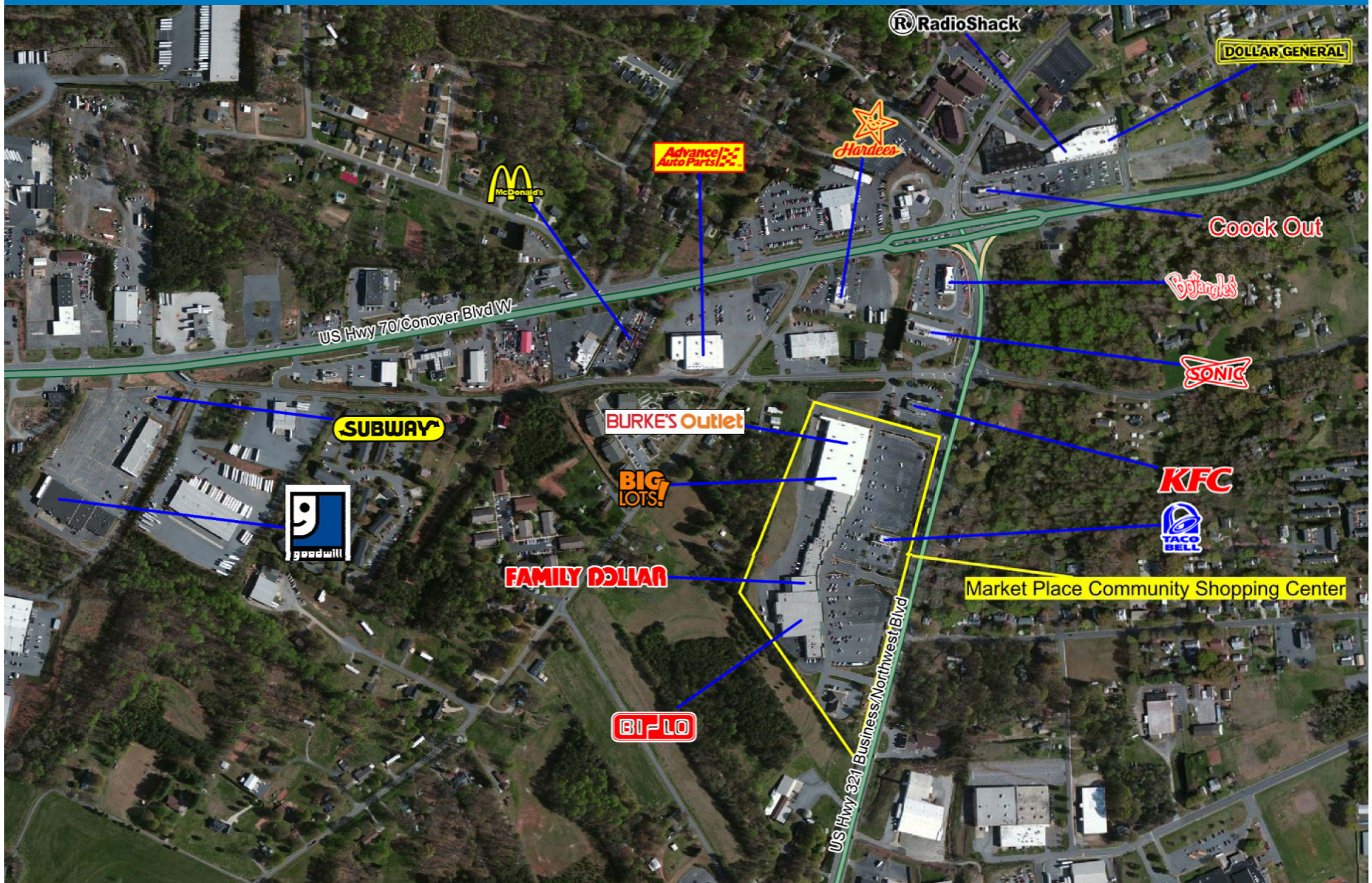


PHILLIPS EDISON & COMPANY



# MARKETPLACE SHOPPING CENTER

2725 Northwest Boulevard | Newton, North Carolina 28658



Logos are for identification purposes only and may be trademarks of their respective companies.

This map was produced using data from private and government sources deemed to be reliable. The information herein is provided without representation or warranty. 2009 Sites USA Inc., Chandler, AZ (480) 491-1112. All Rights Reserved.



PHILLIPS EDISON & COMPANY



# Demographic Summary Report

1990 - 2000 Census, 2014 Estimates & 2019 Projections

Calculated using TAS Retrieval Retrieval



Apr 8, 2015

Latitude: 35.693026 Longitude: -81.226897

Market Place Community Shopping Center		1.00 Mile Radius	3.00 Mile Radius	5.00 Mile Radius	10.00 Mile Radius
Population	Q4 2014 Estimated Population	3,125	20,663	44,751	145,048
	2019 Projected Population	3,183	20,948	45,481	147,905
	2010 Census Population	3,115	20,702	44,735	144,448
	2000 Census Population	2,938	19,012	40,240	133,797
	1990 Census Population	2,748	16,775	34,677	113,127
	Historical Annual Growth 1990 to 2000	0.67%	1.26%	1.50%	1.69%
	Historical Annual Growth 2000 to 2010	0.59%	0.86%	1.06%	0.77%
	Estimated Annual Growth 2010 to 2014	0.07%	-0.04%	0.01%	0.09%
	Projected Annual Growth 2014 to 2019	0.37%	0.27%	0.32%	0.39%
	Median Age	40.5	39.3	39.2	40.3
Households	Q4 2014 Estimated Households	1,301	8,223	17,458	57,256
	2019 Projected Households	1,326	8,333	17,742	58,401
	2010 Census Households	1,295	8,233	17,442	57,010
	2000 Census Households	1,257	7,534	15,537	52,296
	1990 Census Households	1,114	6,534	13,160	43,719
	Historical Annual Growth 1990 to 2000	1.22%	1.43%	1.67%	1.81%
	Historical Annual Growth 2000 to 2014	0.30%	0.89%	1.16%	0.87%
	Estimated Annual Growth 2000 to 2014	0.10%	-0.03%	0.02%	0.09%
	Projected Annual Growth 2014 to 2019	0.37%	0.27%	0.32%	0.40%
	Population per Household	2.36	2.45	2.51	2.49
Population by Race	White	69.0%	69.6%	72.2%	77.0%
	Black or African American	12.0%	11.4%	9.2%	8.6%
	Asian & Pacific Islander	3.1%	3.9%	4.4%	3.6%
	Other Races	2.2%	2.0%	1.9%	1.8%
	Hispanic Population	13.7%	13.0%	12.4%	9.0%
Income	Average Household Income	\$42,820	\$49,174	\$52,835	\$58,485
	Median Household Income	\$30,664	\$37,827	\$41,155	\$43,680
	Per Capita Income	\$18,192	\$19,982	\$20,958	\$23,420
Education (Age 25+)	Elementary	8.7%	8.5%	7.7%	6.7%
	Some High School	9.5%	10.8%	12.1%	11.6%
	High School Graduate	35.7%	34.0%	32.2%	29.7%
	Some College	19.8%	20.1%	20.6%	21.5%
	Associates Degree Only	8.4%	8.4%	9.1%	9.7%
	Bachelors Degree Only	12.7%	13.0%	12.7%	14.3%
	Graduate Degree	5.2%	5.3%	5.7%	6.5%
Business	Number of Businesses	204	841	1,538	4,200
	Total Number of Employees	4,599	18,679	34,130	89,342
	Employees per Business	22.50	22.21	22.19	21.27
	Residential Population per Business	15.29	24.57	29.10	34.53

This report was produced using data from private and government sources deemed to be reliable and is herein provided without representation or warranty.