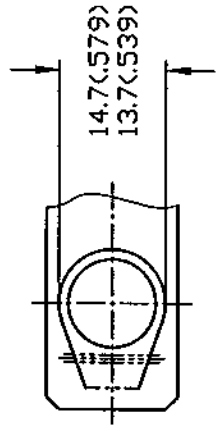
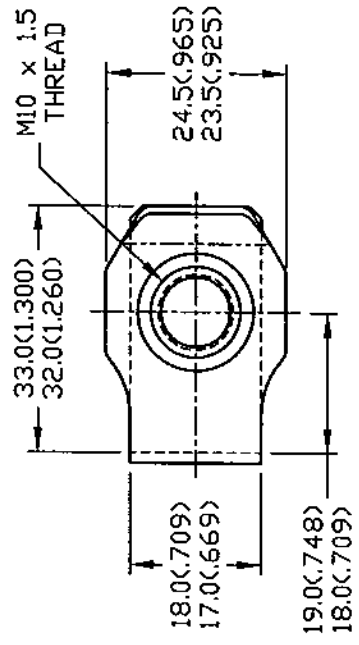


DWG

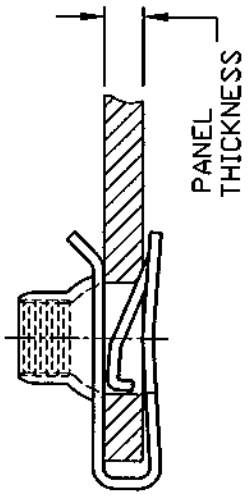
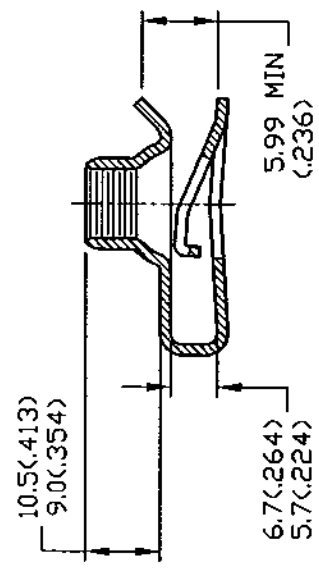
LUGS100033

FINAL INSPECTION FOR INTERNAL THREADS SHALL CONSIST OF A STANDARD THREAD GAUGE FOR PARTS WITH ELECTROPLATED OR CHEMICALLY DEPOSITED FINISHES. FOR OTHER FINISHES, THREAD INSPECTION WILL MEET A GO TEST CONDUCTED WITH AN UNCOATED (OR ZN PLATED) MATING BOLT, AND A NO-GO TEST CONDUCTED WITH THE THREAD ELEMENT OF A STANDARD GAUGE.



UNCONTROLLED

MAY 1 0 2002



DATE	REV	DESCRIPTION	BY
2/01/01	C	REDRAWN TO AUTOCAD 2000	MS
12/21/99	B	ADDED CRITERIA FOR THREAD INSPECTION	CJT
5/1/93	A	WAS ON TABULATED SALES DWG.	DMF

TINNERMAN PALNUT ENGINEERED PRODUCTS, LLC	
MATERIAL: SPRING STEEL -1.40±.05-SAE1050	HARDNESS: ROCKWELL 'C' 43-49
TOLERANCES, UNLESS SPECIFIED: in MM .XX±.25 .XX±.13 .XX±.010 .XXX±.005	

PALNUT	ON SER	PUSHNUT
TITLE M10 x 1.5mm MULTI-THREAD 'U' NUT (SHORT) FOR 1.50-5.50 PANEL THICKNESS		
DRAWN: C.L.	RELEASED	SCALE NONE
DATE: 1/10/77	PART No: LUGS100033	
CHECKED: C. J. T.	DWG No.	
APPROVED: C. J. T.		LUGS100033

Controlled copy must be in Red