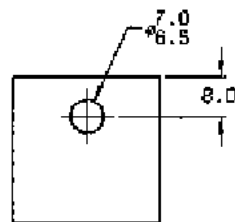
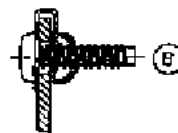


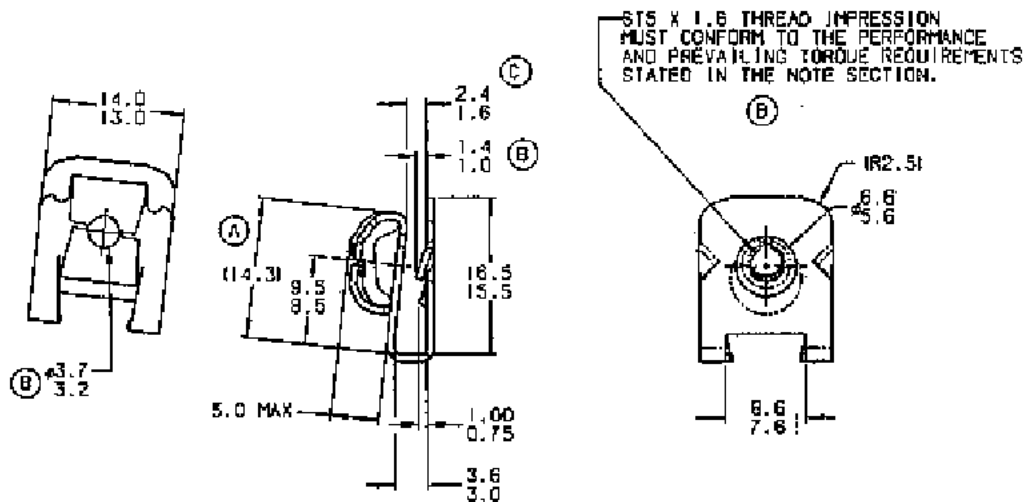
OPTIONAL
LAYOUT IN
2.8/2.2 PANEL



RECOMMENDED
HOLE IN
2.8/2.2 PANEL



TYPICAL ASSEMBLY
SCALE 1:1



NOTE: "T" IDENTIFICATION TO APPEAR
ON FACE OF PART.
DIMENSIONING AND TOLERANCING
PER ASME Y14.5M.
DESTRUCTIVE TORQUE 5.0 NM MINIMUM.
FOR THE FOLLOWING SPECIFICATION THE TORQUE WILL BE RECORDED
AS THE SCREW IS ROTATED ONE FULL TURN.
FIRST ON PREVAILING TORQUE TO BE 0.5 NM MAXIMUM
FIRST AND FIFTH OFF PREVAILING TORQUE TO BE 0.11 NM MINIMUM.

(B)



ACTUAL SIZE

E.C.D.	REV	DESCRIPTION	DATE	DR	CK	APP
3423	A	DIMENSION LINE CORRECTED (114.3) WAS (113.5)	02/13/04	DB	RA	HR
3603	B	SCREW TYPE CHANGED (IMPRESSION NOTE ADDED NOTE ADDED 1.0/1.4 WAS 0.5/0.8 #3.2/3.7 WAS #3.0/3.5)	07/07/04	DB	RA	HR
3815	C	2.4/1.6 WAS 2.0 MAX	08/25/04	RF	CS	HR

WARNING: IN ORDER TO RECEIVE THE BEST AVAILABLE TORQUE, INFORMATION:
TINNERMAN PALNUT AND OTHER PRODUCTS ARE DESIGNED TO BE USED WITH THE INTERNAL RECORDED PERSON, WHO INCLUDES ANOTHER INTERNAL
INFORMATION TO THE USER FOR THE USER TO BE AWARE OF THE USER'S USE OF THE PRODUCT. THE USER SHOULD BE AWARE OF THE USER'S USE OF THE PRODUCT.
IN ORDER TO RECEIVE THE BEST AVAILABLE TORQUE, INFORMATION:
TINNERMAN PALNUT AND OTHER PRODUCTS ARE DESIGNED TO BE USED WITH THE INTERNAL RECORDED PERSON, WHO INCLUDES ANOTHER INTERNAL
INFORMATION TO THE USER FOR THE USER TO BE AWARE OF THE USER'S USE OF THE PRODUCT. THE USER SHOULD BE AWARE OF THE USER'S USE OF THE PRODUCT.

MARK TOOL:

TINNERMAN PALNUT
ENGINEERED PRODUCTS CORPORATION

P.O. Box 2492
Hamilton, Ontario, Canada
L8N 3K1

DRAWN BY	DATE	CHECKED	SCALE	APPROVED
O. BUDNITSKY	11/27/03	R. ALLEN 12/08/2003	2:1	H. RATMANN 12/08/2003

REF: D98159-M516

MATERIAL	THICKNESS	HEAT TREAT	FINISH HARDNESS
SAE 1050-1085	0.71	AUSTEMPER	Rc44-51

NAME "U" TYPE SPEED NUT

(B) SPECIAL FEATURES: M5X1.6 SELF TAPPING SCREW

SHEET: 1	DWG NO	SIZE
OF: 1	D99102-M516	B