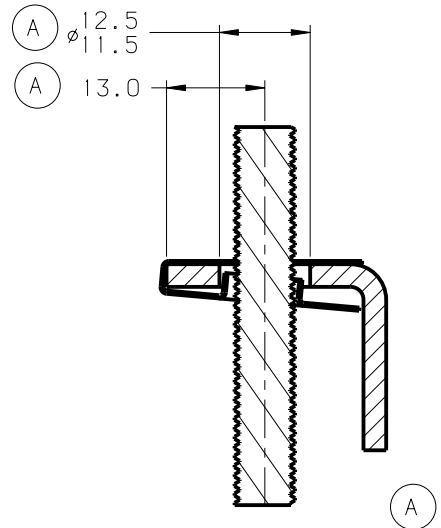


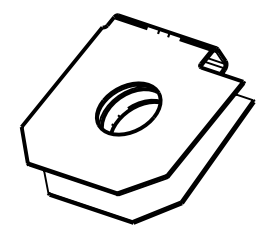
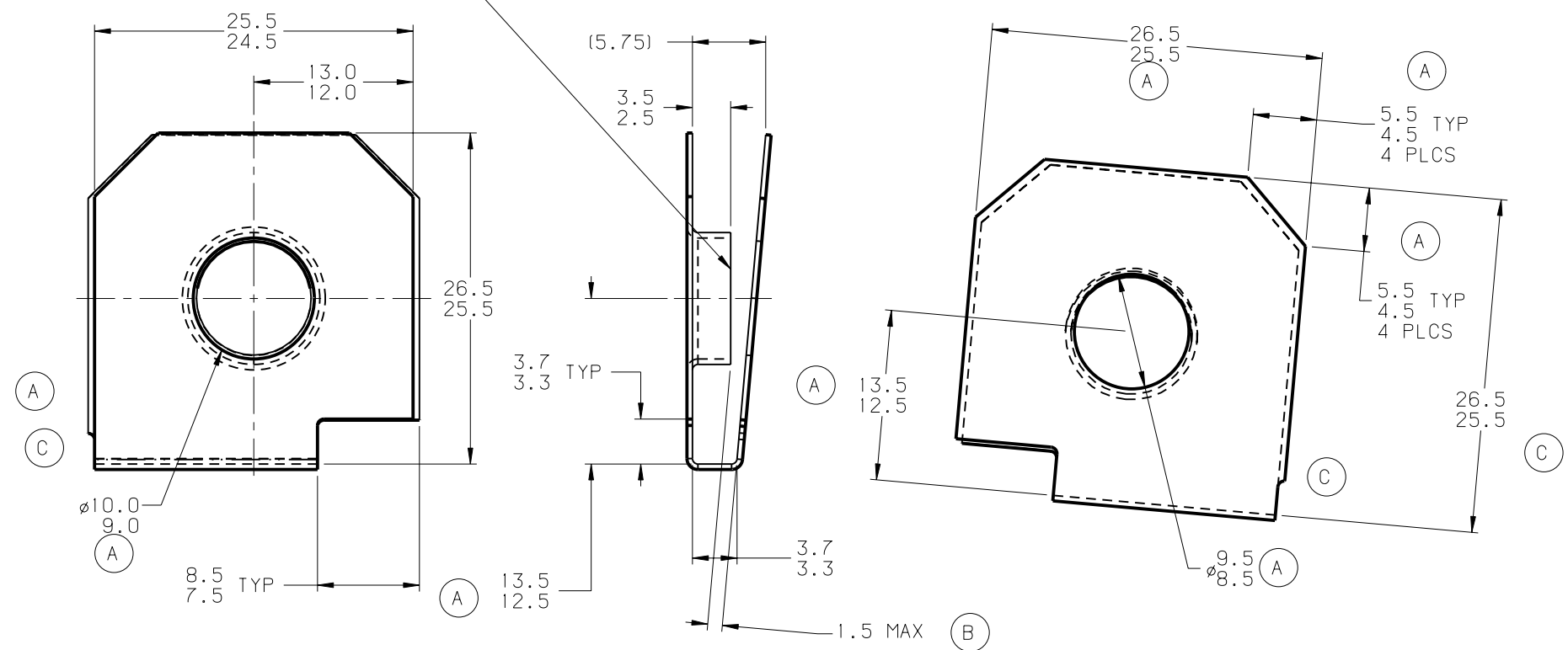
REVISIONS

E.C.O	REV	DESCRIPTION	DATE	DR	CK	APP
2399	A	13.0 WAS 11.9	10/22/98	RG	MD	HR
		12.5/11.5 DIA WAS 9.4				
		2.8/3.2 WAS 2.8				
		5.5/4.5 TYP 4 PLCS WAS (5.0) TYP				
		5.5/4.5 TYP 4 PLCS WAS (5.0) TYP				
		9.5/8.5 DIA. WAS 9.2/8.8 DIA.				
		10.0/9.0 DIA. WAS 9.8/ 9.2 DIA				
		26.5/25.5 ADDED				
		13.5/12.5 ADDED				
		13.5/12.5 ADDED				
		13.5/12.5 REMOVED				
2603	B	REMOVE 11° REF DIM	02/01/00	MV	RR	HR
		(5.75) ADDED				
		1.5 MAX ADDED				
		REDRAWN IN PRO ENGINEER				
2968	C	NOTCHES ADDED	02/13/02	MV	RR	HR
		REDRAWN ON NEW BORDER				



PANEL THICKNESS 2.8/3.2
TYPICAL ASSEMBLY
SCALE 1:1

CRACKING IS PERMISSIBLE
IN THIS AREA



ACTUAL SIZE

NOTE: "D" IDENTIFICATION TO APPEAR
ON FACE OF PART.
DIMENSIONING AND TOLERANCING
PER ASME Y14.5M.

MARK TOOL:



P.O. Box 2492
Hamilton, Ontario, Canada
L8N 3K1

DRAWN BY	DATE	CHECKED	SCALE	APPROVED
R. GUARASCIA	09/18/98	R. RANKIN RELEASED 09/30/98	2:1	H. RATTMANN 1ST. PROD. 09/30/98

REF: CONCEPT SKETCH NUMBER

MATERIAL	THICKNESS	HEAT TREAT	FINISH HARDNESS
SAE 1050-1065	0.43	AUSTEMPER	Rc 44-51

NAME U TYPE SPEED NUT	PRODUCT CODE # 735
--------------------------	-----------------------

SHEET: 1 OF: 1	DWC NO D98907-043M	SIZE B
-------------------	-----------------------	-----------