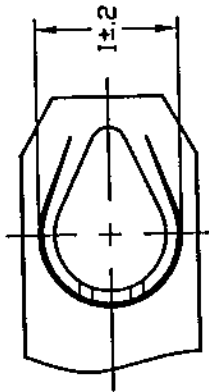


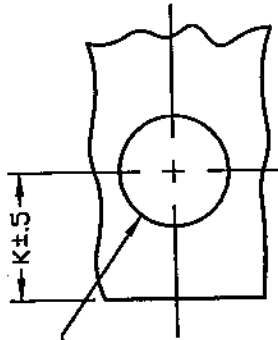
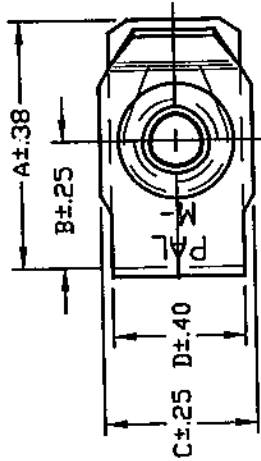
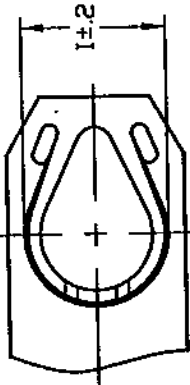
DWG

LPGZ-METRIC

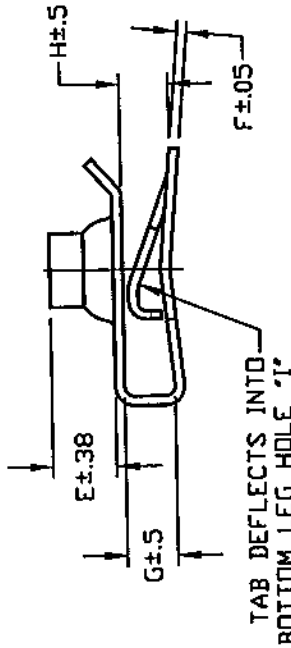
TYPE 1



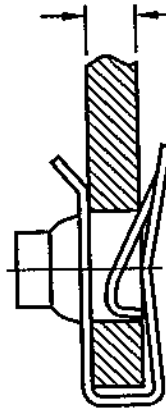
TYPE 2



PANEL HOLE
DIA. L±.38



TAB DEFLECTS INTO
BOTTOM LEG HOLE 'T'



PANEL THICK. 'T'

UNCONTROLLED

ASSEMBLY

Controlled copy must be in Reg SEP 8 2000

| PART NO. | SCREW SIZE | A | B | C | D | E | F | G | H | I | PANEL | | | DESIGN TYPE |
|-------------|------------|-------|-------|-------|-------|------|------|------|------|------|-------|-------|----------|-------------|
| | | | | | | | | | | | K | L | T | |
| LPGZ 002112 | M6 x 1 | 23.37 | 13.72 | 14.22 | 12.60 | 6.10 | 0.89 | 4.70 | 3.70 | 9.40 | 12.00 | 10.30 | 0.8-3.81 | 1 |
| LPGZ 002241 | M6 x 1 | 23.37 | 13.72 | 14.22 | 12.60 | 6.10 | 0.89 | 4.70 | 3.70 | 9.40 | 12.00 | 10.30 | 0.8-3.81 | 2 |

PAL PALNUT ON SERT PUSHNUT

TITLE

PALNUT MULTI-THREAD NUTS
'U' TYPE, SHORT CLIP
STYLE WITH PREVAILING TORQUE

TINNERMAN PALNUT
ENGINEERED PRODUCTS, LLC

MATERIAL:
#1050 SPRING STEEL

HARDNESS: ROCKWELL C 42-50

| | | | |
|---------------|---------------|----------|-------|
| DRAWN | DH | RELEASED | SCALE |
| DATE: 9/15/88 | PART NO: LPGZ | | NONE |

CHECKED: *[Signature]*
APPROVED: *[Signature]*

DWG NO. LPGZ (METRIC)

| DATE | REV | DESCRIPTION | BY |
|----------|-----|---|-----|
| 9/28/00 | F | REDRAWN TO AUTOCAD 2000 | MS |
| 6/21/00 | E | REMOVED THREAD GRADE INDICATION PER ECD138 | CL |
| 7/20/98 | D | ADDED DESIGN 2 & LPGZ002241 | BAD |
| 3/4/98 | C | 9.40 'I' DIM WAS 9.7 PER ECD1776 | BAD |
| 11/30/94 | B | REDRAWN TO CAB. 'C' WAS 4.10, 'T' WAS 0.8-4.0 | CB |
| 3/92 | A | 12.60 WAS 12.70, .40 WAS .25 | DF |