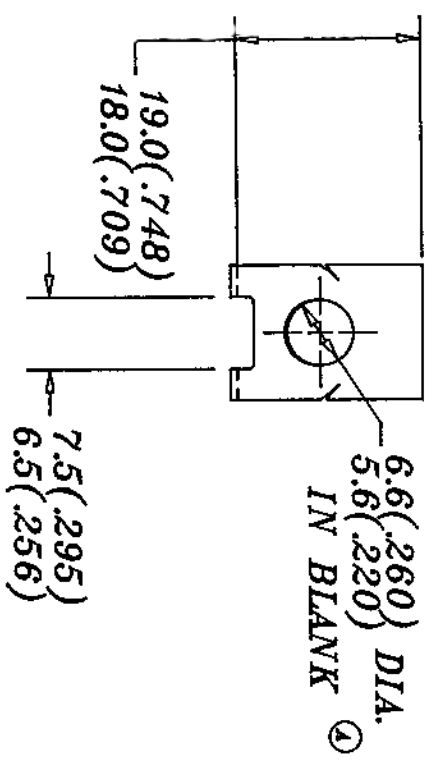
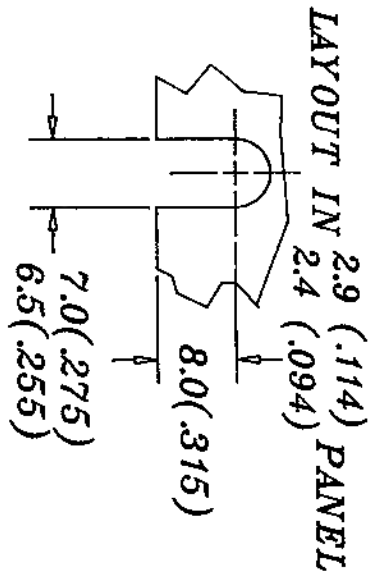
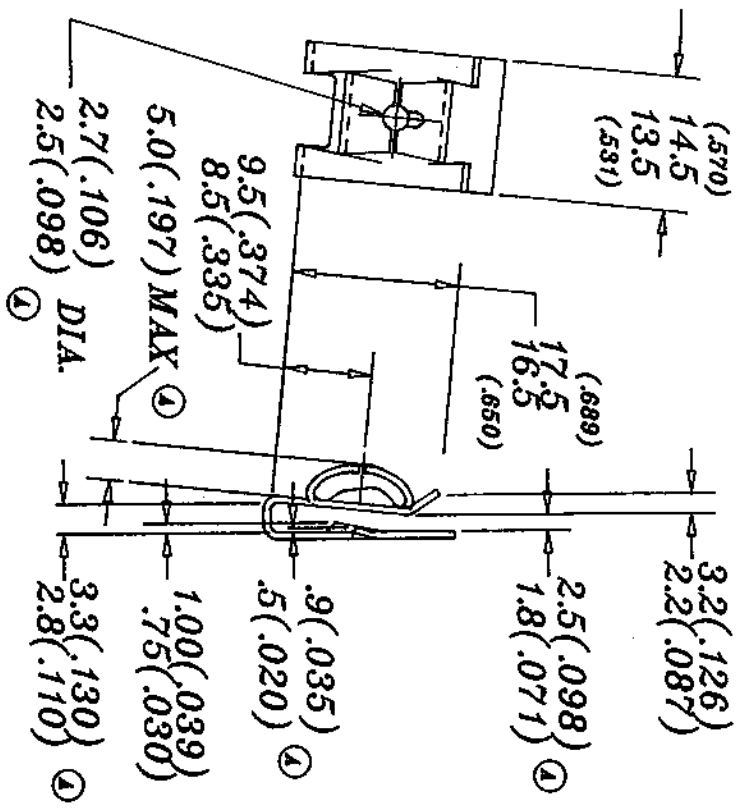


DATE E.C.O. REVISIONS
 06/26/90 REVISED TO AGREE WITH CUSTOMER PRINT

D98585-071M

D98585-071M

DIMENSIONS SUBJECT TO REVIEW OF LONG TERM CAPABILITIES



NOTE:
 1 THE NUT MUST FLEX TO ALLOW THE SURFACE CARRYING THE HELIX IMPRESSION TO LAY FLAT AT ASSEMBLED PANEL. WHEN 12LB.IN. OF TORQUE IS APPLIED USING A TEST SCREW AS CALLED OUT IN TORQUE SPECIFICATIONS.

2 "D" IDENTIFICATION TO APPEAR ON FACE OF PART.

PERFORMANCE SPECIFICATIONS:

- MAX. PREVAILING TORQUE 1ST ON...0.5N.M. (4.43LB-IN)
- MIN. PREVAILING TORQUE 1ST OFF AFTER TIGHTENING SCREW TO 1.8N.M...0.11N.M. (0.97LB-IN)
- MIN. PREVAILING TORQUE 5TH OFF...0.11N.M.
- MIN. DESTRUCTIVE TORQUE...3.4N.M. (30.1LB-IN)
- RECOMMENDED INSTALLATION TORQUE...1.6-2.8N.M. (14.16-24.78LB-IN)

MATERIAL SAE 1050-1065	SCALE	DRAWN S.S.ZOKE	CHECKED <i>6.26-90</i>	APPROVED
		DATE JAN23/89	RELEASED <i>6.26-90</i>	1ST. PROD.
THICKNESS .7X(.028) HEAT TREAT AUSTEMPER	CLASS OF FIT	NET WT./1000	SPECIAL FEATURES M4-2 x 1.41 TAPPING SCREW	D98585-071M
	FINISH ROCK: R ^o 44-51			