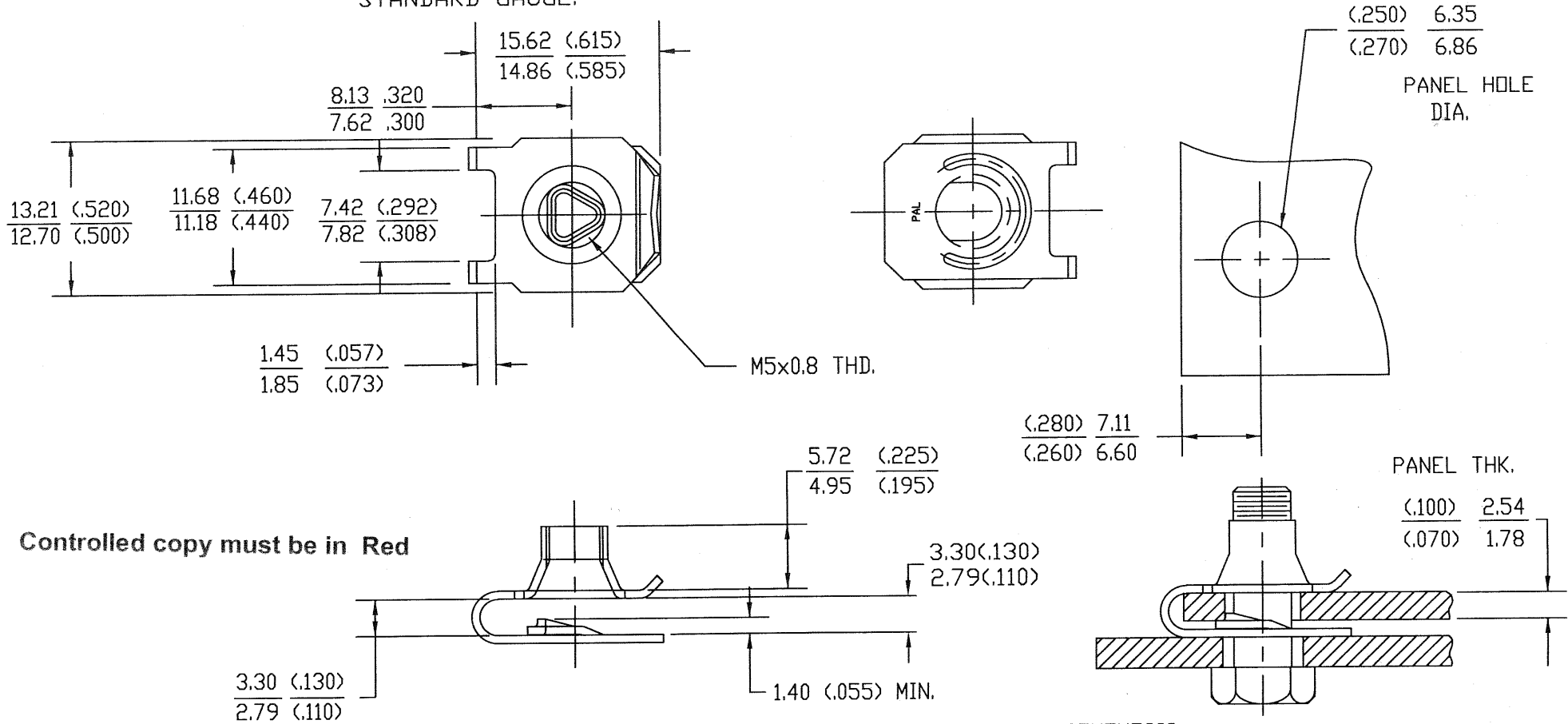


DWG

LPGZ050015

FINAL INSPECTION FOR INTERNAL THREADS SHALL CONSIST OF A STANDARD THREAD GAUGE FOR PARTS WITH ELECTROPLATED OR CHEMICALLY DEPOSITED FINISHES. FOR OTHER FINISHES, THREAD INSPECTION WILL MEET A GO TEST CONDUCTED WITH AN UNCOATED (OR ZN PLATED) MATING BOLT, AND A NO GO TEST CONDUCTED WITH THE THREAD ELEMENT OF A STANDARD GAUGE.



Controlled copy must be in Red

ALL DIMENSIONS ARE IN mm. ENGLISH EQUIVALENTS ARE IN PARENTHESIS.

| DATE | REV | DESCRIPTION | BY |
|---------|-----|-------------|----|
| 6/29/05 | - | RELEASED | PG |

TINNERMAN PALNUT
ENGINEERED PRODUCTS, LLC
MOUNTAINSIDE, NJ

MATERIAL: #1050 SPRING STEEL
.66(.026)THK.

HARDNESS: ROCKWELL C42-50

THREAD CLASS-6H

PAL® PALNUT® DN SERT® PUSHNUT®

TITLE
PALNUT MULTI-THREAD NUT
"U" TYPE WITH PREVAILING TORQUE
SHORT CLIP STYLE
M5x0.8 THD. 1.78-2.54 PANEL

| | | |
|--------------------|-----------------|-------|
| DRAWN BY PG | RELEASED | SCALE |
| DATE 6/29/05 | PART LUGZ050015 | 2:1 |
| CHECKED <i>AM</i> | DWG | |
| APPROVED <i>AM</i> | LPGZ050015 | |