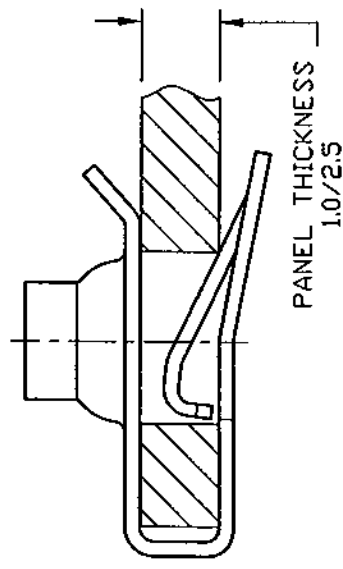
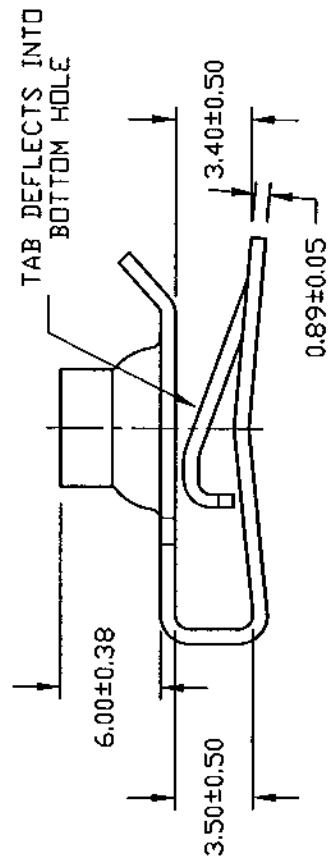
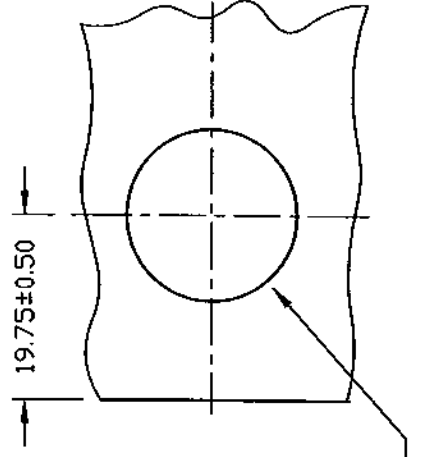
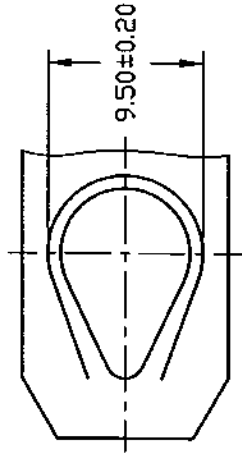
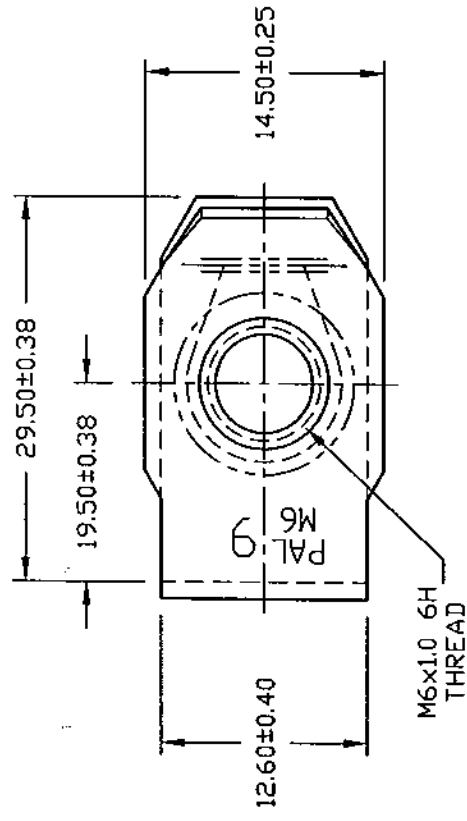


DWG

LUGS060030

FINAL INSPECTION FOR INTERNAL THREADS SHALL CONSIST OF A STANDARD THREAD GAUGE FOR PARTS WITH ELECTROPLATED OR CHEMICALLY DEPOSITED FINISHES. FOR OTHER FINISHES, THREAD INSPECTION WILL MEET A GO TEST CONDUCTED WITH AN UNCOATED (OR ZN PLATED) MATING BOLT, AND A NO-GO TEST CONDUCTED WITH THE THREAD ELEMENT OF A STANDARD GAUGE.



UNCONTROLLED

MAY 1 0 2002

DATE	REV	DESCRIPTION	BY
5/23/01	A	EC0207: THREAD PROPERTY CLASS DESIGNATION ADDED. DRWG ISOLATED FROM 'LUGS-METRIC' DRAWING.	CNC

		MATERIAL: SPRING STEEL - SAE1050	
		HARDNESS: ROCKWELL C 42-50	
Controlled copy must be in Red			

PAL	PALNUT	DN SERT	PUSHNUT
TITLE M6 x 1.0 MULTI-THREAD "U" NUT (LONG) FOR 1.0/2.5 PANEL THICKNESS			
DRAWN	NH	RELEASED	SCALE
DATE	6-13-89	PART No: LUGS060030	NDME
CHECKED	<i>L. PALNUT</i>	DWG No.	
APPROVED	<i>[Signature]</i>		
			LUGS060030