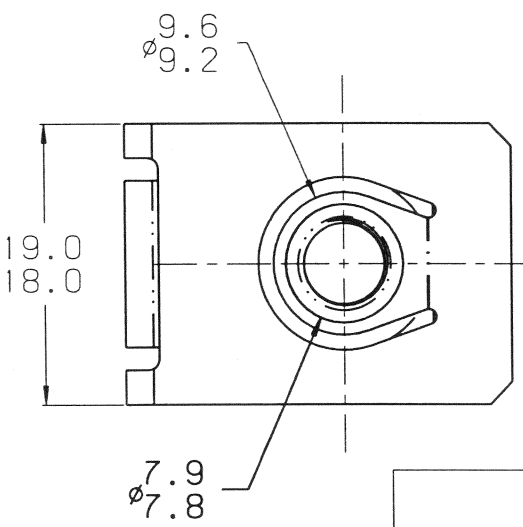
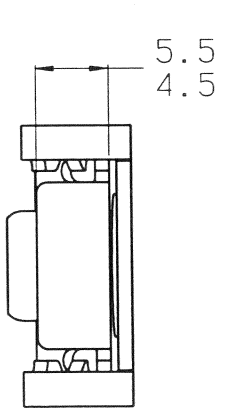
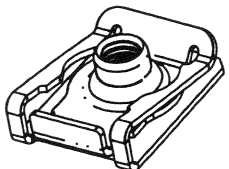


TYPICAL ASSEMBLY SCALE 1:1



- NOTE: 1. MFG IDENTIFICATION TO APPEAR ON FACE OF PART.
 2. DIMENSIONING AND TOLERANCING PER ASME Y14.5M.
 (A) 3. PERFORMANCE SPECIFICATIONS TO BE CONDUCTED AFTER HEAT TREAT & BEFORE FINAL FINISHING

PERFORMANCE SPECIFICATIONS	
(A) PROOF LOAD	19.5kN (4383.8 lb) OVER $\phi 10.2\text{mm}$ (0.402") HOLE USING M6.0 X 1.0 6G SCREW. PROPERTY CLASS 12.9 MIN.
(A) MAX ALLOWABLE BARREL PERMANENT SET	0.45mm (0.017") TESTED AT 13.06kN (2936.0 lb) USING THE SAME HOLE AND SCREW CRITERIA AS PROOF LOAD



ACTUAL SIZE

REVISIONS

E.C.O.	REV	DESCRIPTION	DATE	DR	CK	APP
4633	A	$\phi 10.4/9.9$ WAS $\phi 10.3$	11/15/07	TT		J.H. [Signature]
		12.5 MAX WAS 12.5				
		MAX ALLOWABLE ... SET ADDED				
		PROOF LOAD SPEC. MODIFIED				
		PERF. SPEC. NOTE: REMOVED				
		NOTE MODIFIED				

CONTROLLED IF RED

NOTICE TO PERSONS RECEIVING THIS DRAWING AND/OR TECHNICAL INFORMATION: TINNERMAN PALNUT ENGINEERED PRODUCTS CLAIMS PROPRIETARY RIGHTS TO THE MATERIAL DISCLOSED HEREON. THIS DRAWING AND/OR TECHNICAL INFORMATION IS ISSUED IN CONFIDENCE FOR ENGINEERING INFORMATION ONLY AND MAY NOT BE REPRODUCED OR USED TO MANUFACTURE ANYTHING SHOWN OR REFERRED TO HEREON WITHOUT DIRECT WRITTEN PERMISSION FROM TINNERMAN PALNUT ENGINEERED PRODUCTS. THIS DRAWING AND/OR TECHNICAL INFORMATION IS THE PROPERTY OF TINNERMAN PALNUT ENGINEERED PRODUCTS AND IS LOANED FOR MUTUAL ASSISTANCE.

MARK TOOL:



P.O. Box 2492
 Hamilton, Ontario, Canada
 L8N 3K1

DRAWN BY	DATE	CHECKED	SCALE	APPROVED
T. TRAN	09/24/07	D. HOLODNIUK RELEASED 10/03/07	2:1	M. LUANG-ASA IST. PROD. 10/03/07

REF: CHRYSLER 06105242AA

MATERIAL	THICKNESS	HEAT TREAT	FINISH HARDNESS
SAE 1050-1065	0.94	AUSTEMPER	Rc44-51

NAME "U" NUT

SPECIAL FEATURES: M6 TAPPED BARREL

SHEET: 1 OF: 1	DWG NO D99351-M61	SIZE B
-------------------	----------------------	-----------