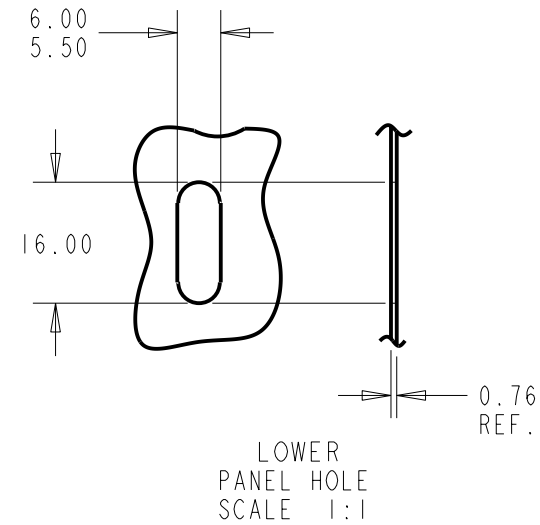
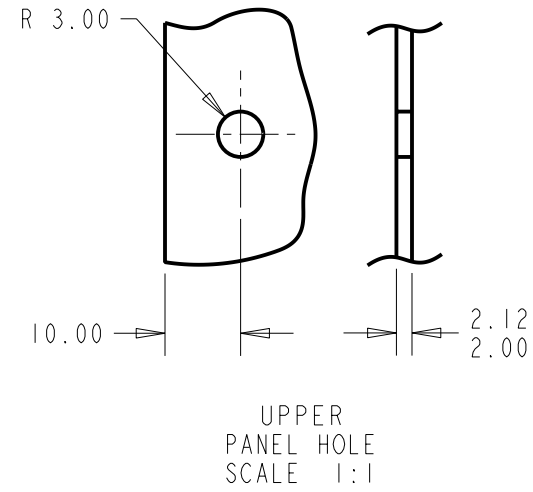
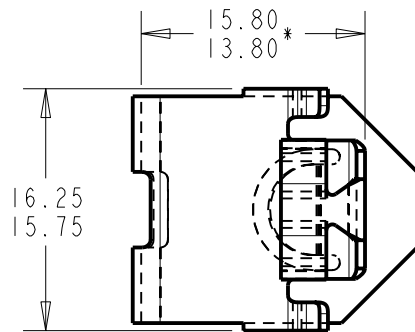
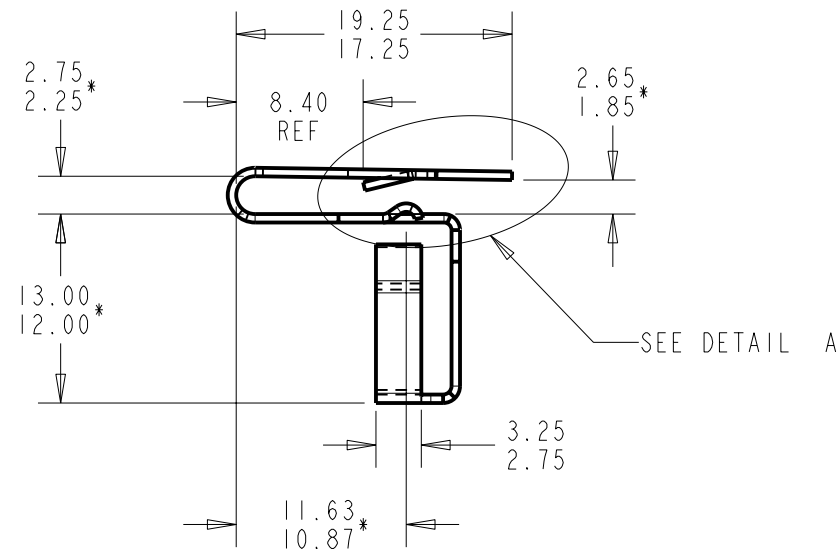
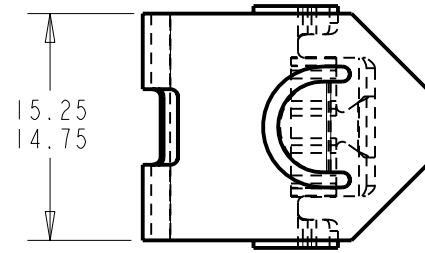
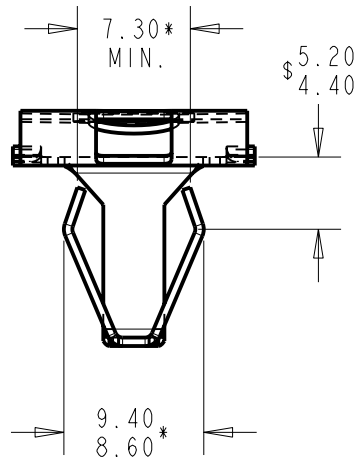
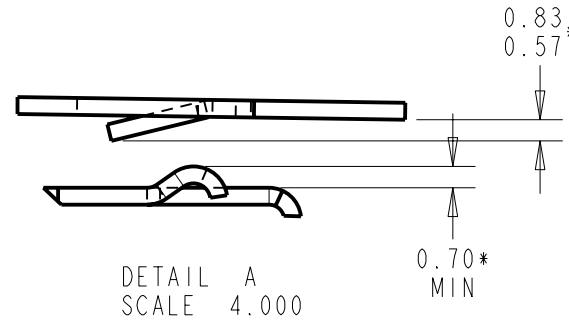


DATE ECO REVISIONS

C58270-056M

C58270-056M

- (B) 6-13-94 FIRST PRODUCTION RELEASED, PRODUCTION APPROVED.
- (C) 11-28-94 165498 MIDDLE LEG REVISED.
- (D) 7-31-97 400160 1.30 MAX & 5.20/4.40 DESIGNATED SPC DIMENSIONS (\$).
- (E) 4-20-00 401531 RECREATED ON PRO/E.
- (F) 6-29-00 401604 ADDED VIEW "DETAIL A", ADDED 0.70 MIN\*, REMOVED 1.30 MAX\$, 2.65/1.85\* WAS 1.85 MIN\*.

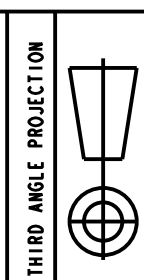


- NOTE:
- IDENTIFICATION STAMP TO APPEAR ON PART
  - UNLESS OTHERWISE SPECIFIED, ALL DIMENSIONS IN MILLIMETERS

METRIC

"NOTICE TO PERSONS RECEIVING THIS DRAWING AND/OR TECHNICAL INFORMATION"  
TINNERMAN PALNUT ENGINEERED PRODUCTS CLAIMS PROPRIETARY RIGHTS TO THE MATERIAL DISCLOSED HEREON. THIS DRAWING AND/OR TECHNICAL INFORMATION IS ISSUED IN CONFIDENCE FOR ENGINEERING INFORMATION ONLY AND MAY NOT BE REPRODUCED OR USED TO MANUFACTURE ANYTHING SHOWN OR REFERRED TO HEREON WITHOUT DIRECT WRITTEN PERMISSION FROM TINNERMAN PALNUT ENGINEERED PRODUCTS TO THE USER. THIS DRAWING AND/OR TECHNICAL INFORMATION IS THE PROPERTY OF TINNERMAN PALNUT ENGINEERED PRODUCTS AND IS LOANED FOR MUTUAL ASSISTANCE TO BE RETURNED WHEN ITS PURPOSE HAS BEEN SERVED. THIS DRAWING AND/OR TECHNICAL INFORMATION IS THE PROPERTY OF TINNERMAN PALNUT ENGINEERED PRODUCTS.

CLASSIFICATION OF DIMENSIONS  
\* DENOTES SETUP DIMENSIONS  
ALL OTHERS-MINOR DIMENSIONS



MATERIAL	SAE 1050-1065 STEEL	HEAT TREAT	AUSTEMPER
	THICKNESS 0.56mm (.022)		
SCALE	2:1	DRAWN	CKR/TJW
CLASS OF FIT	FINISH ROCK. 4.5-50 Rc	DATE	3-15-94
SPECIAL FEATURES		CHECKED	JVI/TJW
C58270-056M		RELEASED	3-17-94
SPEED CLIP- SPECIAL SHAPE		APPROVED	F.F.
		I ST.PROD. 6-13-94	

**TINNERMAN PALNUT**  
ENGINEERED PRODUCTS, LLC  
MASSILLON PLANT

**TINNERMAN BRAND**

**TINNERMAN PALNUT**  
ENGINEERED PRODUCTS, LLC  
MASSILLON PLANT 240-6th ST. N.W.  
MASSILLON, OHIO 44647

SCALE 1.000