

- DATE ECO. REVISIONS
- (A) 03/25/91 925 REDRAWN ON CAD
- (B) 05/27/91 970 ADDED CRITICAL AND MAJOR DIM.
ADDED PERFORMANCE TABLE
- (C) 07/18/91 978 0.71 WAS .071, ADDED GRAIN
DIRECTION
- (D) 08/16/91 1001 ADDED FINISH NOTE
- (E) 08/20/91 1004 REVISED TEST TABLE
- (F) 01/06/92 1061 8.38/7.62 WAS 7.65/6.90

D98652-071M

PERFORMANCE SPECIFICATIONS

1. INSERTION FORCE ON CUST. PLASTIC UNIT 3 KG. MAX.
REMOVAL FORCE FROM CUST. PLASTIC UNIT 4 KG. MIN.
2. SLIDING FORCE AGAINST CUST. PLASTIC UNIT 0.30-1.30 KG.
3. INSERTION FORCE IN PANEL HOLE 8-20 KG.
REMOVAL FORCE FROM PANEL HOLE 8-17 KG.
TEST TO BE PERFORMED WHILE CLIP IS INSTALLED ON CUST. PLASTIC UNIT
4. DISTORTION AFTER REMOVAL FROM PANEL HOLE MUST SATISFY FIG. 1
5. MUST NOT REMOVE FROM PANEL HOLE UNDER 1.5 KG. FORCE AT "A" POINT
IN "P" DIRECTION FIG. 2
6. MUST MEET PERFORMANCE SPECIFICATIONS 3. & 5. AFTER INSERTION & REMOVAL
IN PANEL HOLE 5 TIMES
7. MUST BE NO GAP BETWEEN PANEL & CUST. PLASTIC UNIT UNDER REMOVAL FORCE OF
0.3 KG. AFTER INSERTION & REMOVAL IN PANEL HOLE 5 TIMES.
8. SEE EATON ENGINEERING TEST SPECIFICATION T98652

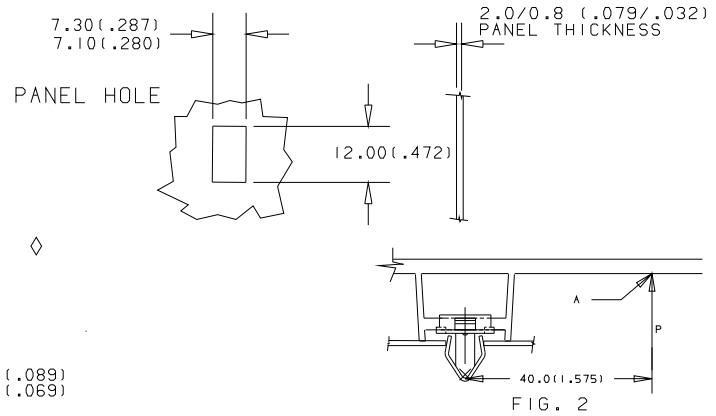
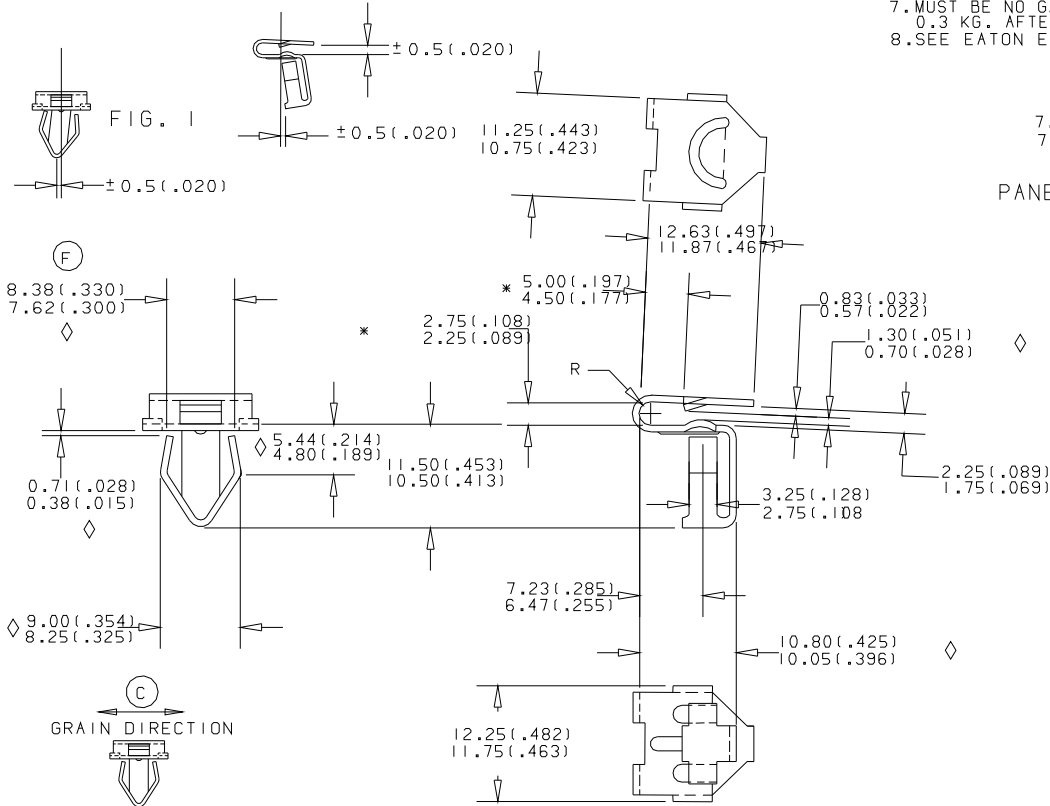
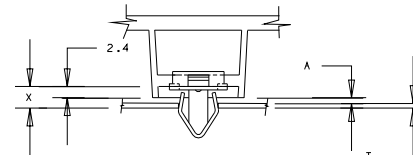


TABLE I

X	4.0			3.2			2.4		
T	0.8	2.0	0.8	2.0	0.8	2.0	0.8	2.0	0.8
A	0	0.5	0	0.5	0	0.5	0	0.5	0
No.	4	4	4	4	4	4	4	4	4
	5	5	5	5	5	5	5	5	5
	6	6	6	6	6	6	6	6	6
	7	7	7	7	7	7	7	7	7
	8	8	8	8	8	8	8	8	8



CLASSIFICATION OF DIMENSIONS
DENOTES MAJOR DIMENSION
ALL OTHER MINOR DIMENSIONS

SCALE	2:1	DRAWN P.	SELVEY	CHECKED	APPROVED
DATE	03/25/91	RELEASED	1st PROD.		
CLASS OF FIT	SPECIAL FEATURES				
NET WT/1000	D98652-071M				
FINISH	ROCKRC44-51				
MATERIAL	SAE 1050 - 1065				
THICKNESS	0.71 (.028) HEAT TREAT AUSTEMPER				

Eaton Yale
Engineered Fasteners Division
Dominion Plant, P.O. Box 492
Hamilton, Ontario, Canada

TinnermanBrand

Engineered Fasteners