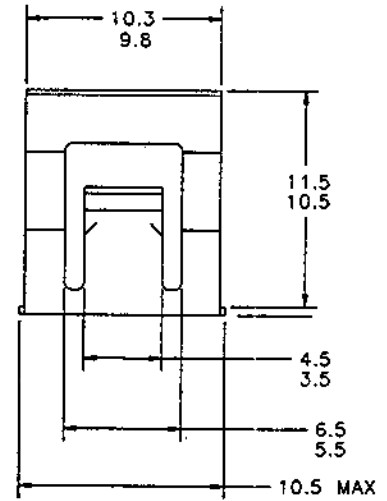
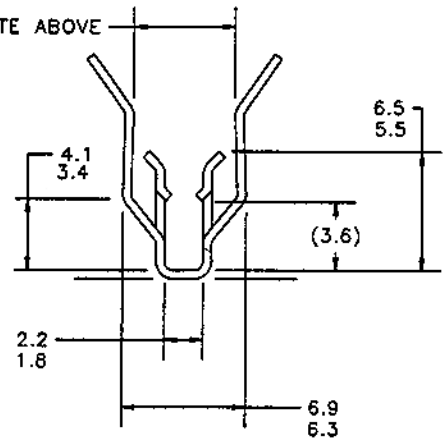
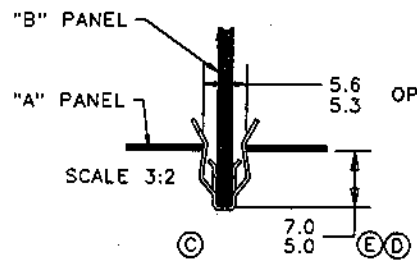


NOTE: 2.3 DIMENSION TO BE CHECKED WHEN PART IS COMPRESSED TO 5.3

** SEE NOTE ABOVE



NOTE: "B" PANEL 1.9/1.7 THK MEASURED 3.2 FROM THE END OF BLADE.
 "D" IDENTIFICATION TO APPEAR ON FACE OF PART



LOAD TO MATING PART		
MATING PART	INSERTION	PULL-OUT
B	45 lbs MAX	25 lbs MIN
A	6-23 lbs	6-23 lbs

REVISIONS

E.C.O	REV	DESCRIPTION	DATE	DR	CK	APP
1614	A	REDRAWN ON NEW BORDER	10/18/94	MB	RR	HR
1623	B	DART SHAPE DASH LINER CLIP	11/04/94	MB	RR	HR
		WAS U TYPE SPEED NUT				
		765 WAS 735				
1771	C	PERFORMANCE SPECIFICATIONS	08/10/95	JP	RR	HR
		ADDED				
		DIMENSION .45 ADDED TO				
		PANEL DRAWING				
1802	D	11.4 WAS .45	11/21/95	AB	RR	HR
2040	E	7.0/5.0 WAS 11.4	02/07/97	JP	RR	HR



DRAWN BY	DATE	CHECKED	SCALE	APPROVED
P. SELVEY	11/02/92	E.C.R. RELEASED 11/02/92	4:1	H. RATTMANN 1ST. PROD 11/03/92
MATERIAL	THICKNESS	HEAT TREAT	FINISH HARDNESS	
SAE 1050-1065	0.43	AUSTEMPER	Rc44-51	
NAME			PRODUCT CODE #	
DART SHAPE DASH LINER CLIP			765 (B)	
SPECIAL FEATURES:				
SHEET 1	DWG NO			SIZE
OF 1	D98696-043M			B