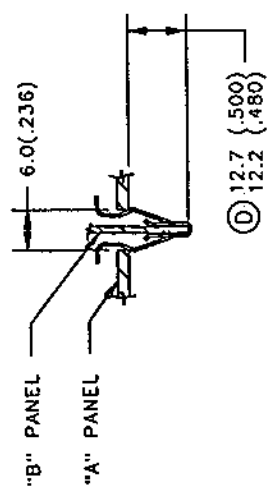
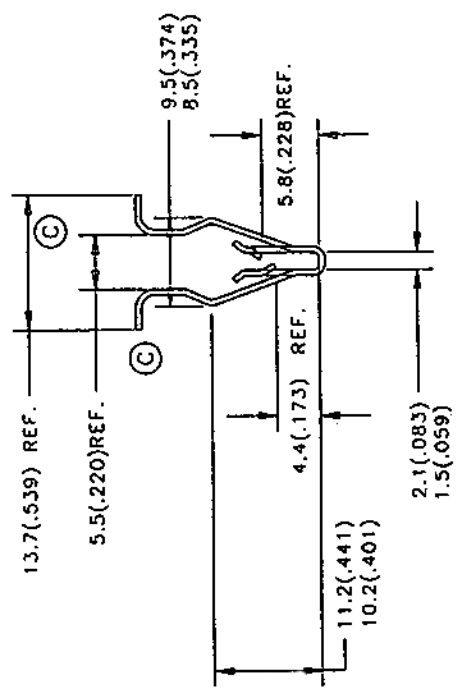
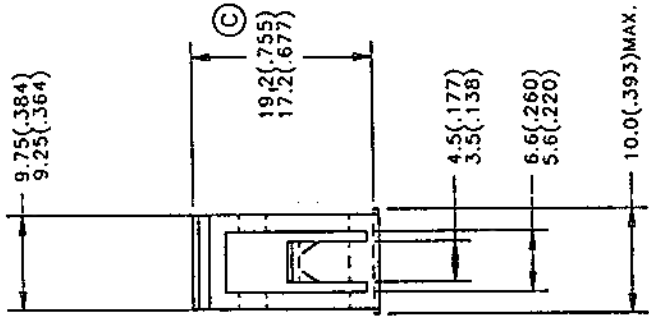


REVISIONS

E.C.O	REV	DESCRIPTION	DATE	DR	CK	APP
1127	A	ADDED PERFORMANCE SPECS	04/02/92			
1188	B	CORRECTED INSERTION VALUES	05/30/92			
1465	C	WING TIPS ADDED	06/08/93			
		19.2/17.2 WAS 17.1/16.1				
		13.7 REF. ADDED				
1847	D	12.7/12.2 ADDED	01/19/96	JP	RL	/
		REDRAWN ON NEW BORDER				



NOTE: "O" IDENTIFICATION TO APPEAR ON FACE OF PART

"B" PANEL THK. 1.25(.049) +/- .13(.005)  
TYP. ASSY

**TINNERMAN PALNUT**  
ENGINEERED PRODUCTS, LLC

DRAWN BY	DATE	CHECKED	SCALE	APPROVED
P. SELVEY	02/19/92	R. RANKIN RELEASED 06/09/93	2:1	H. RAITMANN 1ST. PROB. 06/09/93

REF	MATERIAL	THICKNESS	HEAT TREAT	FINISH HARDNESS
	SAE 1050-1065	.56 (.022)	AUSTEMPER	Rc44-51
NAME				PRODUCT CODE #
				930
SPECIAL FEATURES:				
SHEET 1				DWG NO
OF 1				D98676-056M
				SIZE
				B

MATING PART	INSERTION	PULL OUT
B	15.42Kg. (34LBS.)MAX. (B)	11.34Kg. (25LBS.)MIN.
A	9.07Kg. (20LBS.)MAX.	10.43-5.44Kg. (23-12LBS.)MIN.

**DIMENSIONS SUBJECT TO REVIEW OF LONG TERM CAPABILITIES**